

# Maximum Number of Individuals that may Permanently Live in a Dwelling for Building Prototypes on the Sample R2-5 and R-8 Zoned Lots

*As required by the Statewide Building Code 2018 Building Maintenance Code to safeguard against overcrowding*

## **R2-5 zone**

- 6,032 square foot lot
- 2,714 square foot maximum building size
- Example for the maximum number of individuals that may permanently live in a dwelling for sample dwellings on Slides 3 – 5

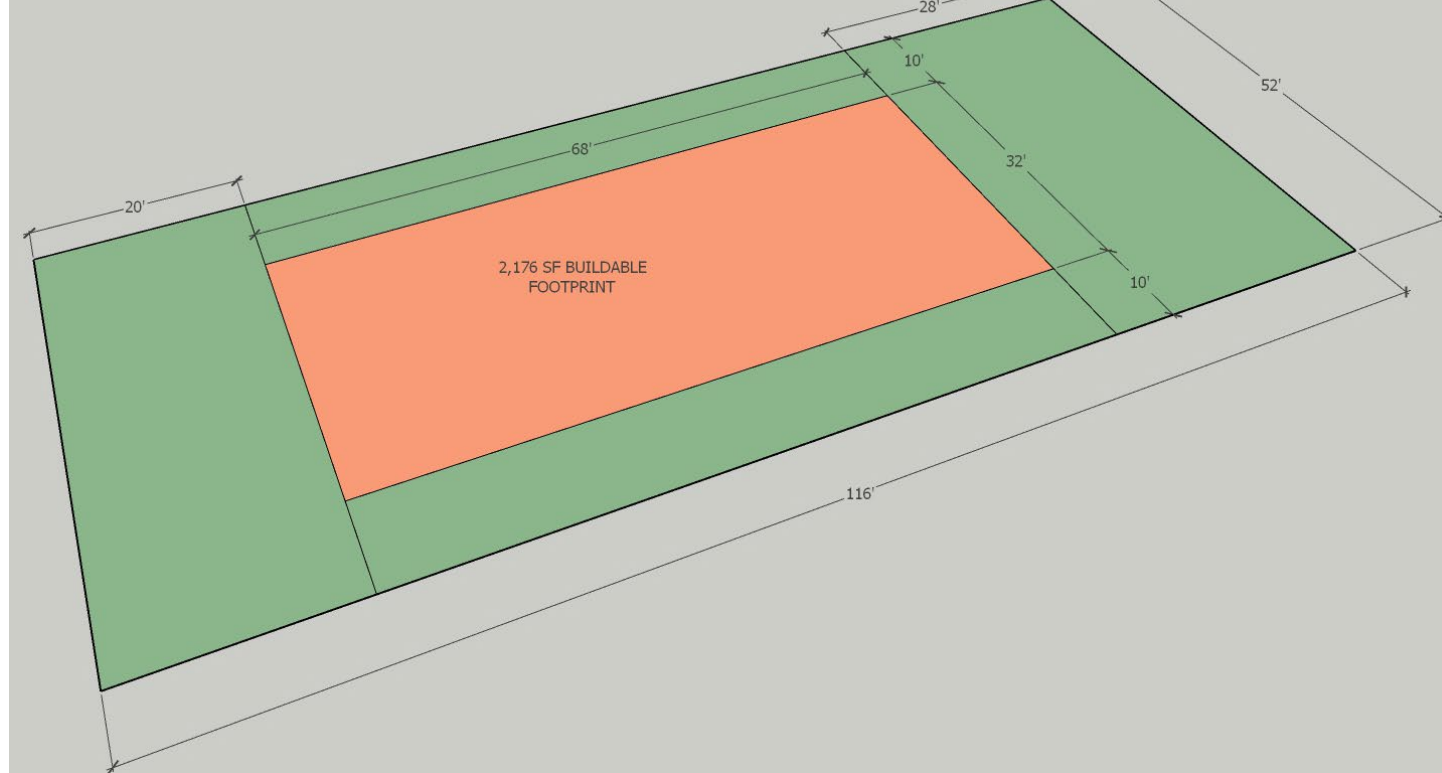
## **R-8 zone**

- 14,058 square foot lot
- 4,920 square foot maximum building size
- Example for the maximum number of individuals that may permanently live in a dwelling for sample dwellings on Slides 7 – 9

# Maximum Number of Individuals that may Permanently Live in a Dwelling for Building Prototypes on the Sample R2-5 Zoned Lot

## R2-5 zone

- 6,032 square foot lot
- 2,714 square foot maximum building size
- Examples for the maximum number of individuals that may permanently live in a dwelling:
  - Slide 3 – Single-unit dwelling
  - Slide 4 – Four-unit dwelling
  - Slide 5 – Three-unit dwelling



## Single-unit dwelling on sample R2-5 zoned lot

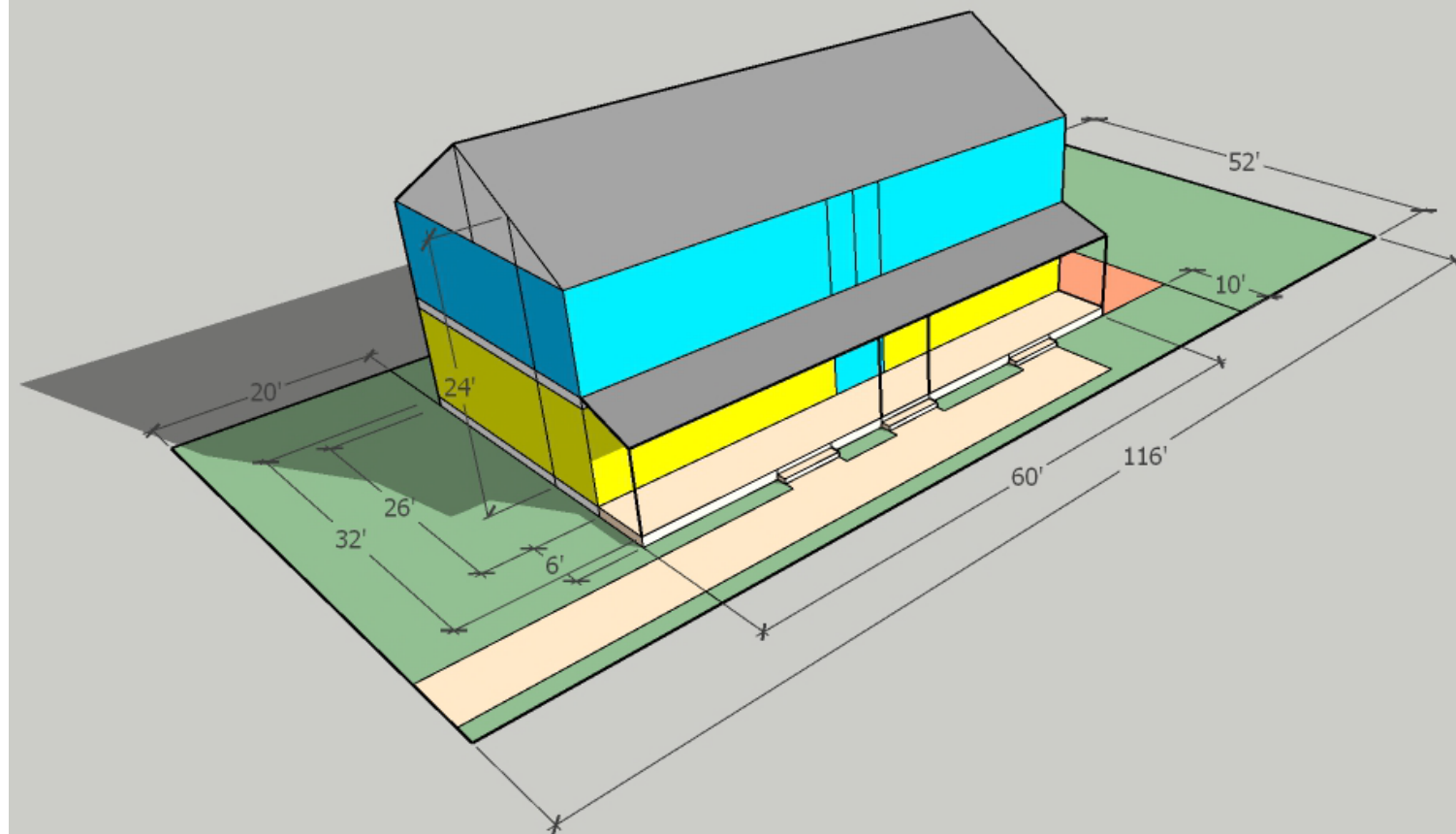
6,032 square foot lot

2,714 square foot maximum building size

Typical new house on lot size and of this square footage has four bedrooms:

One 225 sf bedroom	4 individuals =	<b>4</b>
Three 150 sf bedrooms	3 individuals in each bedroom; 3 individuals X 3 bedrooms =	<b><u>+ 9</u></b>

**Maximum number of individuals that may permanently live in the entire building = 13**



## Four-unit Dwelling: Example 1 in R-2-5 zone

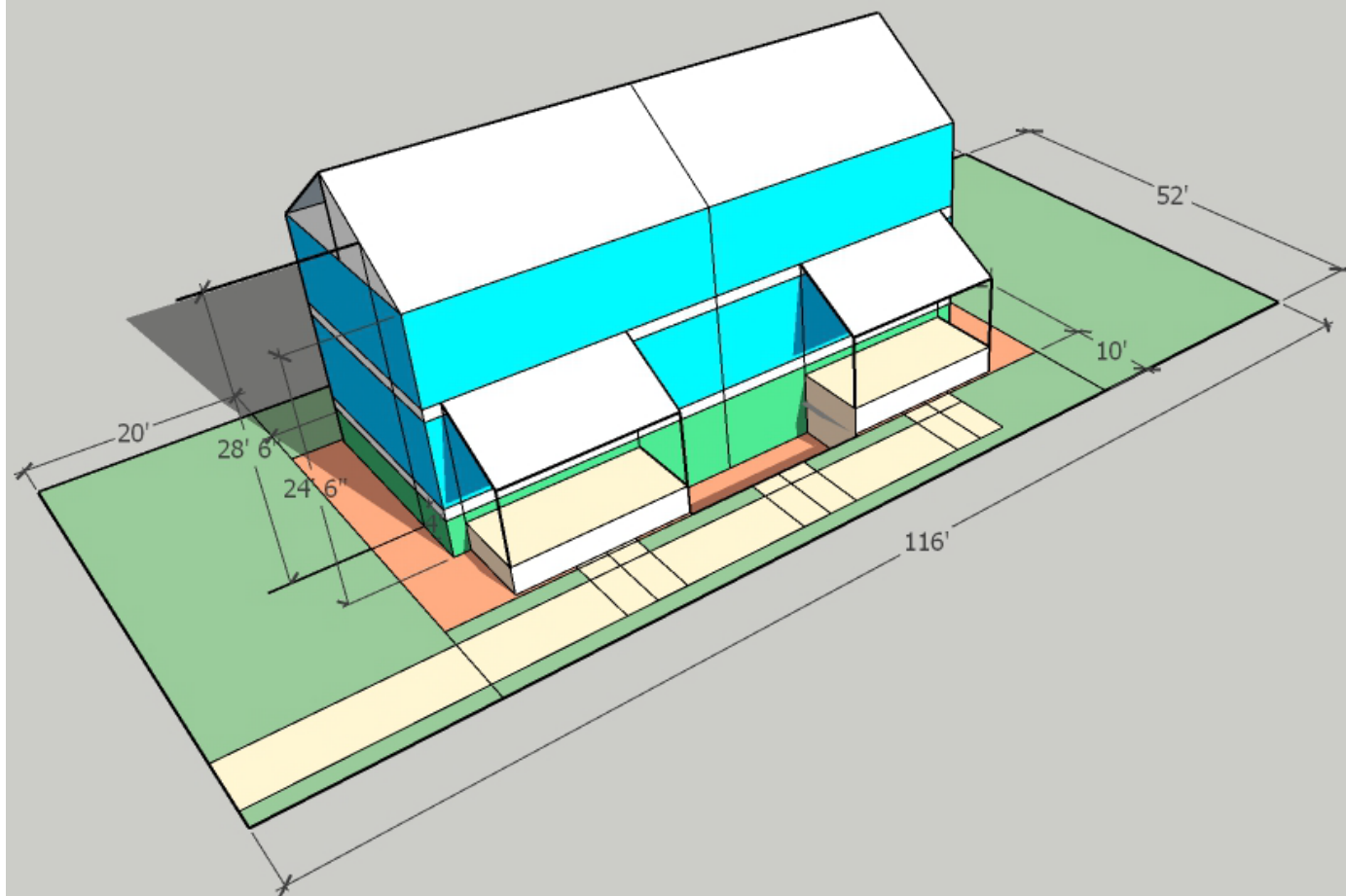
### Two, one-bedroom units

121 square foot bedroom in each unit	2 individuals in each bedroom;	
	2 individuals X 1 bedroom X 2 units =	<b>4</b>

### Two, junior one-bedroom/studio units

108 square foot bedroom in each unit	2 individuals in each bedroom;	
	2 individuals X 1 bedroom X 2 units =	<u>+ 4</u>

**Maximum number of individuals that may permanently live in the entire building = 8**



## Three-unit Dwelling: Example 2 in R-2-5 zone

### One, four-bedroom unit on first floor

90 square feet for each bedroom

1 individual in each bedroom;

1 individual X 4 bedrooms X 1 unit =

**4**

### Two, three-bedroom units, on second floor

88 square feet for each bedroom

1 individual in each bedroom;

1 individual X 3 bedrooms X 2 units =

**+ 6**

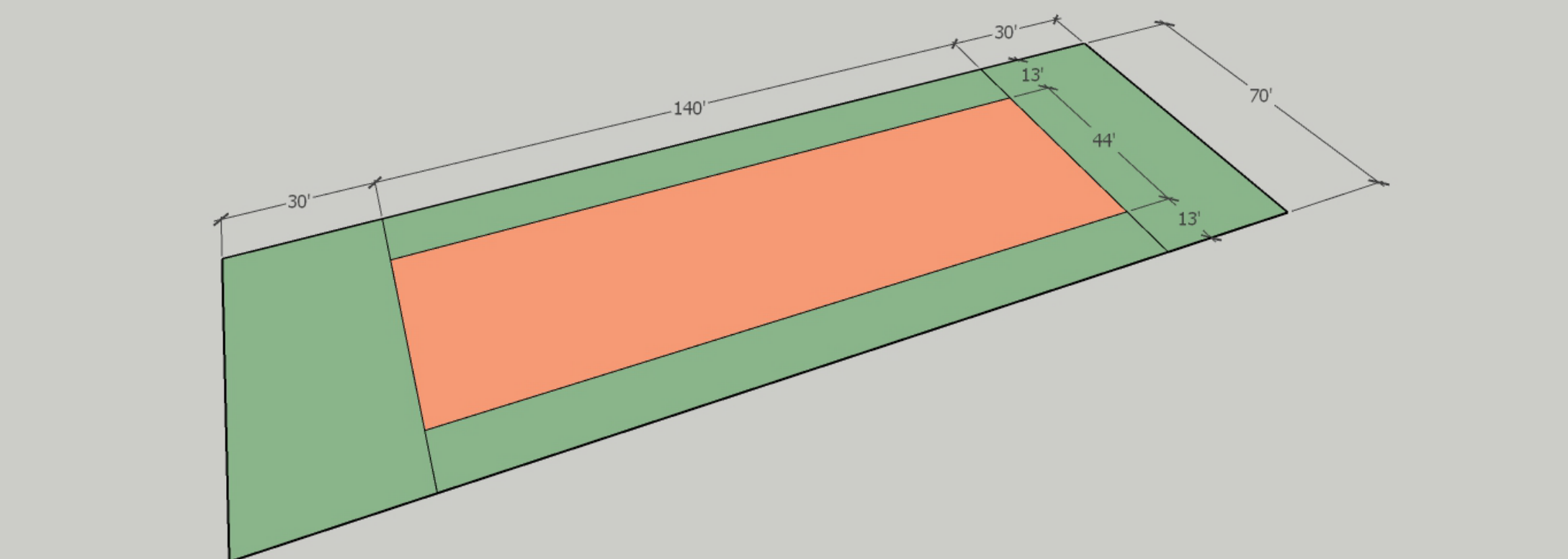
**Maximum number of individuals that may permanently live in the entire building =**

**10**

## Maximum Number of Individuals that may Permanently Live in a Dwelling for Building Prototypes on the Sample R-8 Zoned Lot

### R-8 zone

- 14,058 square foot lot
- 4,920 square foot maximum building size
- Examples for the maximum number of individuals that may permanently live in a dwelling:
  - Slide 7 – Single-unit dwelling
  - Slide 8 – Two-unit dwelling
  - Slide 9 – Four-unit dwelling



## Single-unit dwelling on sample R-8 zoned lot

14,058 square foot lot

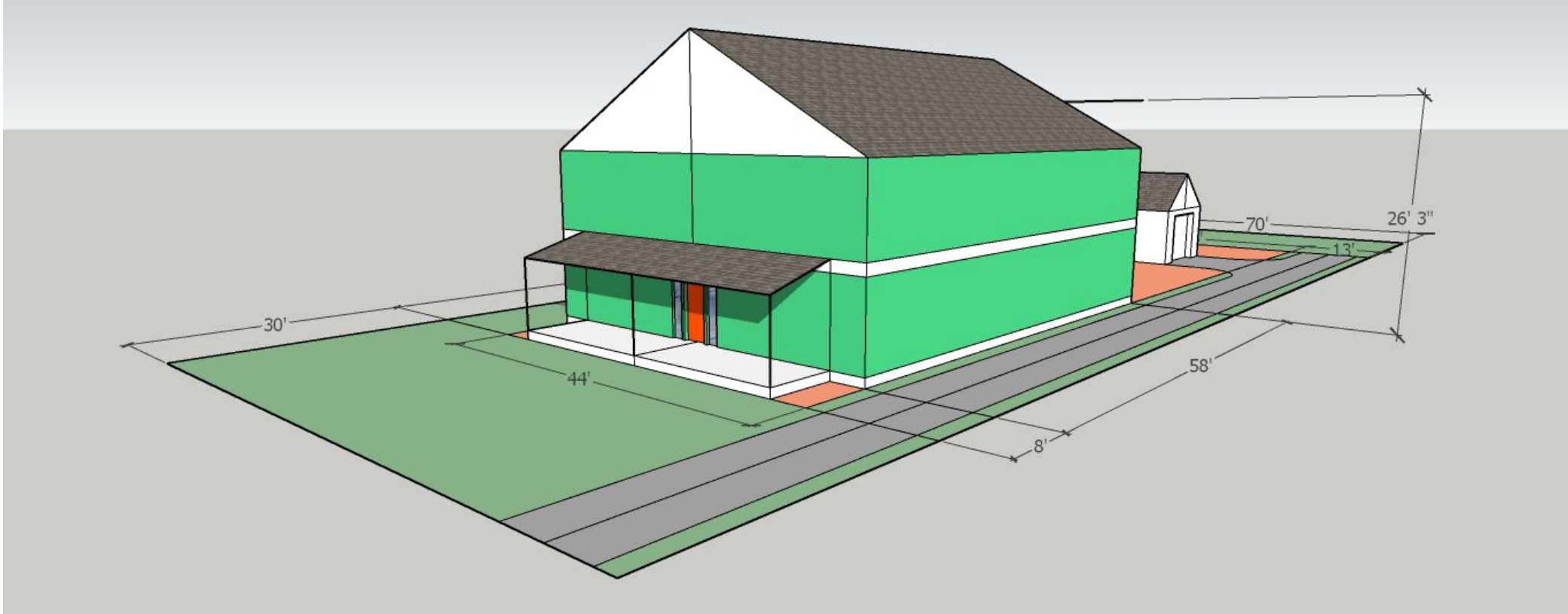
4,920 square foot maximum building size

Typical new house on lot size and of this square footage has five bedrooms

One 225 sf bedroom	4 individuals =	<b>4</b>
--------------------	-----------------	----------

Four 150 sf bedrooms	3 individuals in each bedroom;	
	3 individuals X 4 bedrooms =	<b><u>+ 12</u></b>

<b>Maximum number of individuals that may permanently live in the entire building =</b>	<b>16</b>
---	-----------



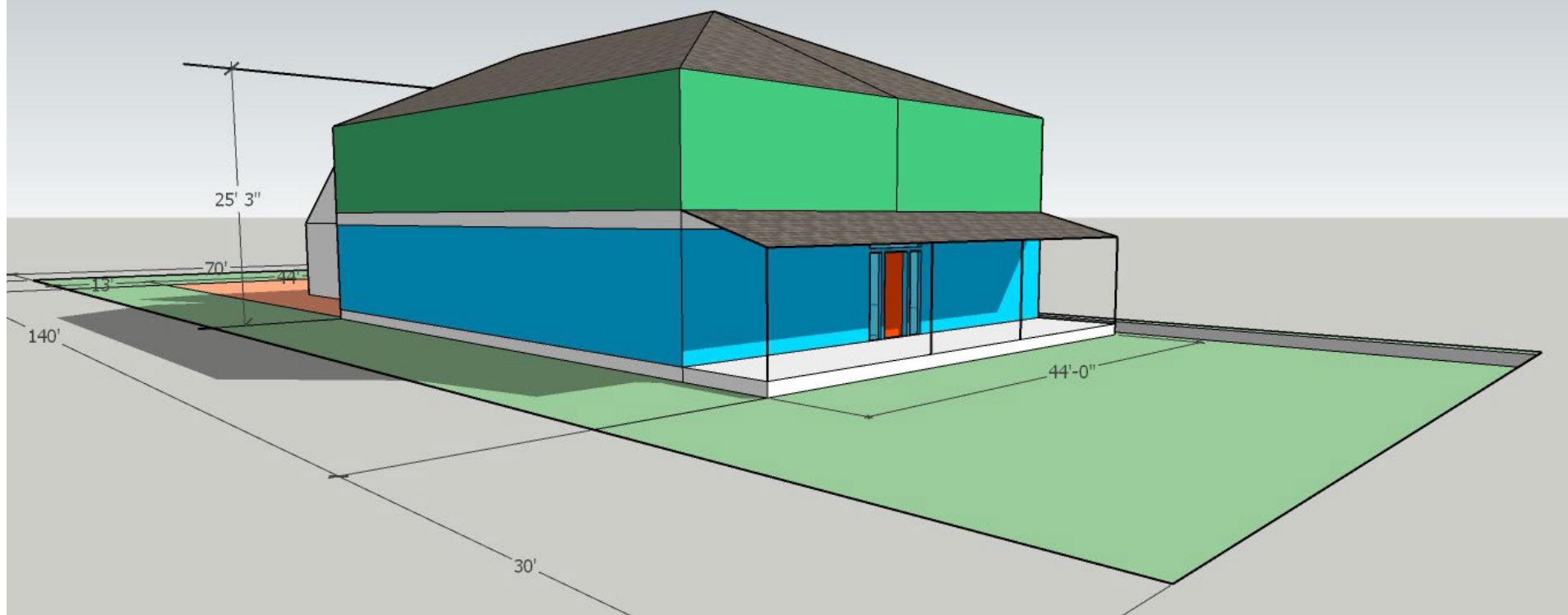
**Two-unit Dwelling with Units Arranged Side-by-side:  
Example 1 in R-8 zone**

**Two, three-bedroom units**

140 square feet for each bedroom      2 individuals in each bedroom;  
 2 individuals X 3 one bedrooms X 2 units =      **12**

**Maximum number of individuals that may permanently live in the entire building =      12**





**Four-unit Dwelling: Example 2 in R-8 zone**

**Two, two-bedroom units on first floor**

140 square feet for each bedroom

2 individuals in each bedroom;

2 individuals X 2 bedrooms X 2 units =

**8**

**Two, three-bedroom units, on second floor**

120 square feet for each bedroom

2 individuals in each bedroom;

2 individuals X 3 bedrooms X 2 units =

**+ 12**

**Maximum number of individuals that may permanently live in the entire building =**

**20**