



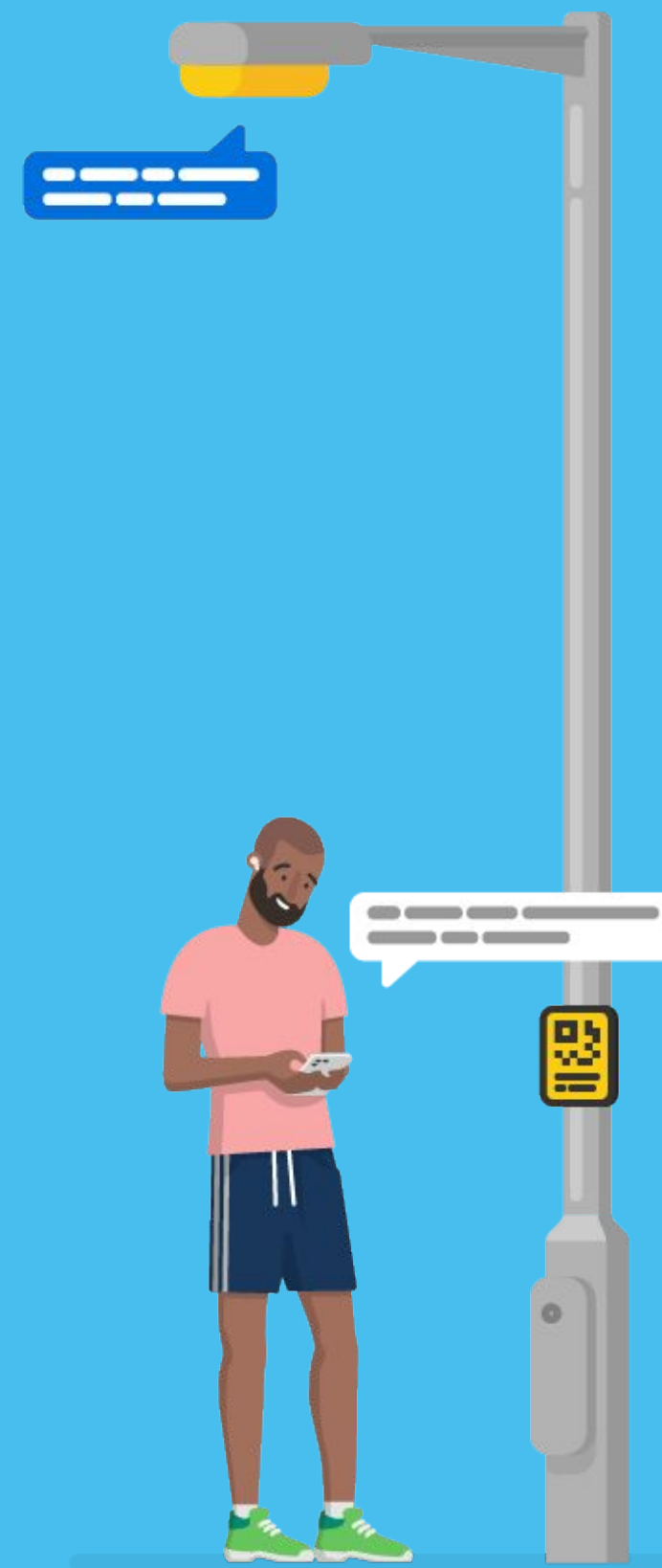
Alexandria

King & Commonwealth Streetscape Improvements

01/17/24

HELLO

LAMP POST



Insights

What kinds of things would make the space more inviting and dynamic? 🍌

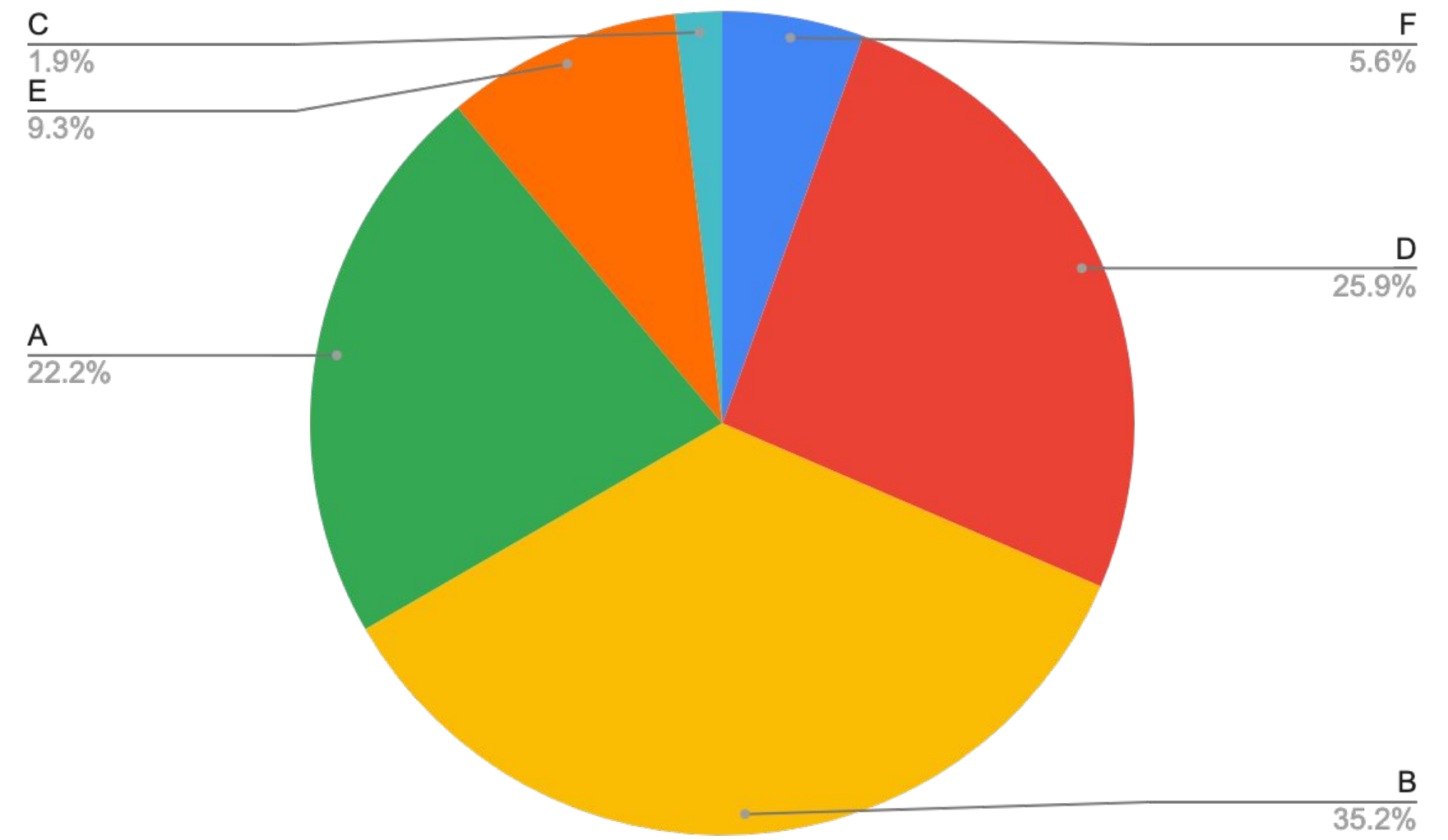
There was 56 responses to this question with lots of common themes:

1. Bike Lanes and Wider Sidewalks:
 - Mentioned by several respondents.
 - Example comments: "Bike lanes," "wider sidewalks," "add bike lanes and improve sidewalks," "bike lanes and wider sidewalks are top priority." "Better sidewalks today! Construction makes it impossible to walk or cross".
2. Better Lighting:
 - Emphasized by multiple individuals.
 - Example comments: "Better lighting," "better lighting and public art under the bridges," "lighting and public art on the walls would be great too."
3. Public Art:
 - Suggested by a number of people.
 - Example comments: "Public art under the bridges," "public art on the walls," "installation by the waterfront that said 'I love you!'" "Let local schools paint the space", "historical mural"
4. Traffic Flow and Safety:
 - Addressed by respondents with a focus on safety and traffic throughput.
 - Example comments: "Better traffic flow to prevent collisions," "safety and traffic throughput is most important," "rail bridge at Commonwealth is dangerous.", "pedestrian crossings"
5. Pedestrian Amenities:
 - Requested by participants.
 - Example comments: "Seating areas," "crosswalks," "more space for pedestrians," "seating, bike lanes, greenery & flowers."
6. Specific Infrastructure Suggestions:
 - Mentioned by some individuals.
 - Example comments: "A roundabout to facilitate constant traffic flow," "splash guards to keep cars from splashing water," "walk light across Russell."
7. Cleanliness and Maintenance:
 - Raised by a few respondents.
 - Example comments: "Regular cleaning of pigeon droppings," "keeping the area clean," "reduce bird poop on the sidewalk."
8. Specific Safety Concerns:
 - Identified by participants.
 - Example comments: "Dark and treacherous at night," "replace barrier between sidewalk and road," "add more street lights on Commonwealth."
9. Miscellaneous Suggestions:
 - Comments on a ping pong table, sound barrier for trains, and murals.
 - Example comments: "Ping pong table," "sound barrier for trains," "murals."

In terms of frequency, bike lanes, wider sidewalks, and better lighting appear to be the most commonly mentioned themes, with safety concerns and public art also receiving notable attention.

Which roadway safety concern, if any, do you experience the most near the intersection on King Street or Commonwealth Avenue? 📍

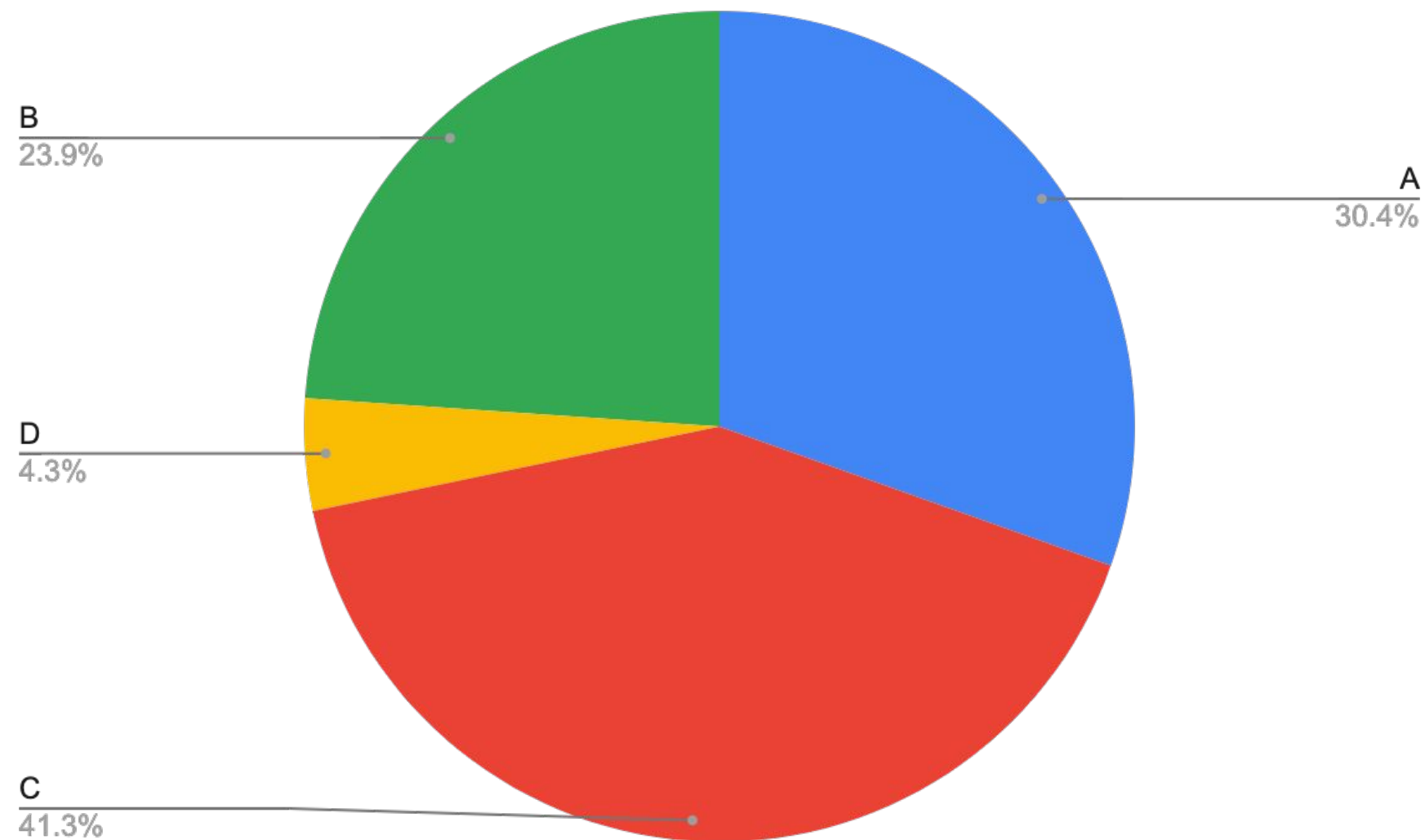
- There was 54 responses to this question
- **35.2%** of users said 'B' (It's difficult to cross the street)
- **25.9%** of users said 'D' (It's difficult to bike)
- **22.2%** of users said 'A' ('People driving, but don't stop at signs or yield to pedestrian)
- **9.3%** of users said 'E' (It's difficult to travel along the sidewalks)
- **1.9%** of users said 'C' (People drive too fast)
- **5.6%** of users said 'F' (I don't experience any roadway safety concerns)



Insights

With more space under the bridges, which roadway feature would you say is the highest priority? 💡

- **46 users responded to this question**
- **41.3%** of users said 'C' (Add or improve sidewalks)
- **23.9%** of users said 'B' (Add or improve bicycle facilities)
- **30.4%** of users said 'A' (Add new or upgrade existing crosswalks Morning)
- **4.3%** of users said 'D' (Add new or upgrade existing curb ramps)



Are there any other safety concerns you would like to share? 😞

- **There were 51 responses to this question**
- 19 users said 'yes'
- 12 users said 'no'
- **Notable responses:**
 - Pedestrians should have a clearer path!
 - It's difficult to travel along the sidewalks they are so narrow and there is water dripping from the tracks
 - Get rid of that weird triangle garden and put an actual public park there
 - It is too dark & dangerous
 - The traffic gets so backed up on Commonwealth at rush hour. Road diet is a terrible idea
 - It's difficult to travel on the sidewalks
 - Cars drive very fast and there should be better bike lanes
 - Difficult to walk
 - The safety of vehicular traffic flow for both bridges.
 - An extreme backup of cars onto Commonwealth and Russell roads, which makes drivers get impatient and drive unsafely
 - Just please put in a crosswalk so I can safely cross the street
 - I think general lighting on commonwealth can be improved. I need to carry a flashlight in the evening to walk my dog and I feel that it might be scary for some groups of people to walk alone in the dark. Not enough homes leave porch lights on to have visible light on the sidewalks.
 - It takes too long to cross from the dash bus stop areas across Commonwealth or King Street. It encourages people to jaywalk in order to catch the bus or just get going.
 - Bicyclists that do not follow traffic laws; scooters and bikes on sidewalks and/or traveling wrong direction in bike lanes.
 - It's difficult to cross the street, people drive too fast & it's difficult to travel along the sidewalks
 - There need to be better bike lanes. There needs to be better sound dampening for the Amtrak and other trains. There needs to be more space to walk under the bridge.

Sentiment Analysis



1. Bike Lanes and Wider Sidewalk

A majority of respondents, 56 in total, highlighted the importance of incorporating bike lanes and wider sidewalks. Comments emphasized the urgency of addressing pedestrian and cyclist needs, citing issues with the current infrastructure and the impact of ongoing construction on walkability.

2. Better Lighting

Numerous individuals, expressing concerns for safety and aesthetics, underscored the necessity of enhanced lighting. Suggestions ranged from better lighting under bridges to incorporating public art on walls, demonstrating a link between lighting and the overall appeal of the space.

3. Public Art

Public art emerged as a popular suggestion, with respondents envisioning installations under bridges, historical murals, and collaborative projects with local schools. This reflects a desire to infuse creativity into public spaces and foster a sense of community engagement.

4. Traffic Flow and Safety

A subset of respondents prioritized traffic flow and safety, emphasizing the need for better traffic management to prevent collisions. Specific concerns included hazardous areas, such as the rail bridge at Commonwealth, signaling a call for improved safety measures.

5. Pedestrian Amenities

Participants expressed the need for enhanced pedestrian amenities, including seating areas, crosswalks, and additional space for pedestrians. These responses highlighted the importance of creating comfortable and accessible environments for those on foot.

7. Cleanliness and Maintenance

A few respondents raised concerns about cleanliness and maintenance, particularly regarding pigeon droppings. This indicates a desire for ongoing upkeep to ensure a pleasant and hygienic environment.

8. Specific Safety Concerns

Issues related to safety, including poorly lit areas and specific safety concerns at night, were identified by some respondents. These responses highlight the importance of addressing safety concerns to enhance the overall experience of the public spaces.

9. Roadway Safety Concerns

In response to specific questions about roadway safety, concerns about crossing streets and biking difficulties were predominant. This data indicates that addressing challenges related to pedestrian and cyclist safety is crucial for improving the road infrastructure.

10. Prioritizing Roadway Features

When asked about priorities under bridges, respondents favored adding or improving sidewalks, reflecting a consensus on the importance of enhancing pedestrian infrastructure.

11. Additional Safety Concerns

Respondents shared various safety concerns, including narrow sidewalks, traffic congestion, and the need for better bike lanes. These responses emphasize the multifaceted challenges that the community faces in ensuring a safe and well-designed public space.



Thank you

Any questions?
contact@hlp.city
www.hlp.city

HELLO

LAMP POST