

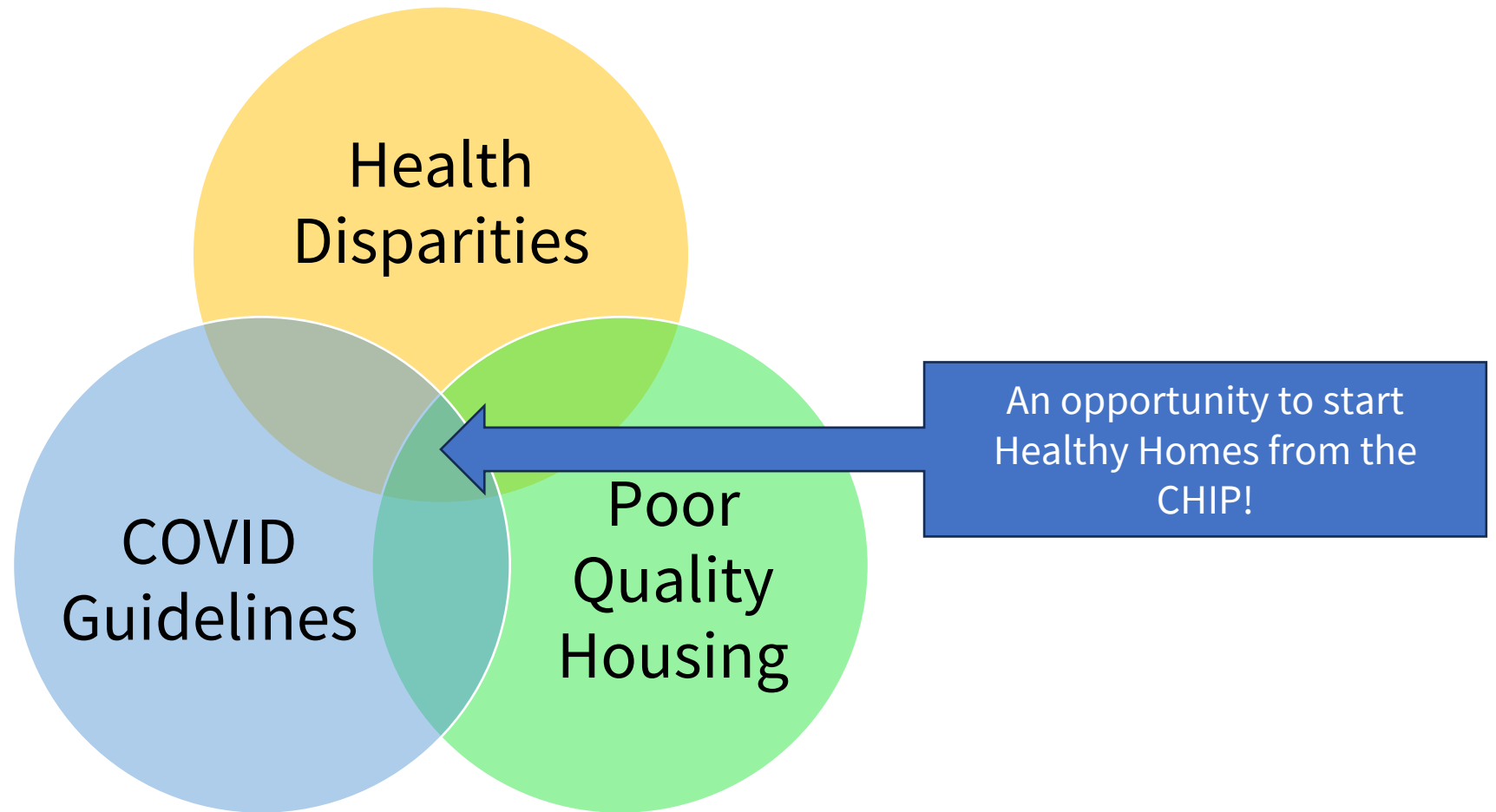
Healthy Homes, Assessments, and Environmental Opportunities

Natalie Talis, MPH
Alexandria Health Department

March 2024

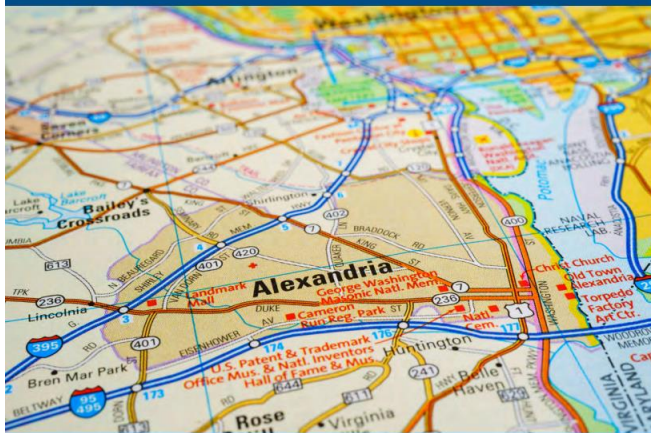


Why is AHD in the Healthy Homes World?



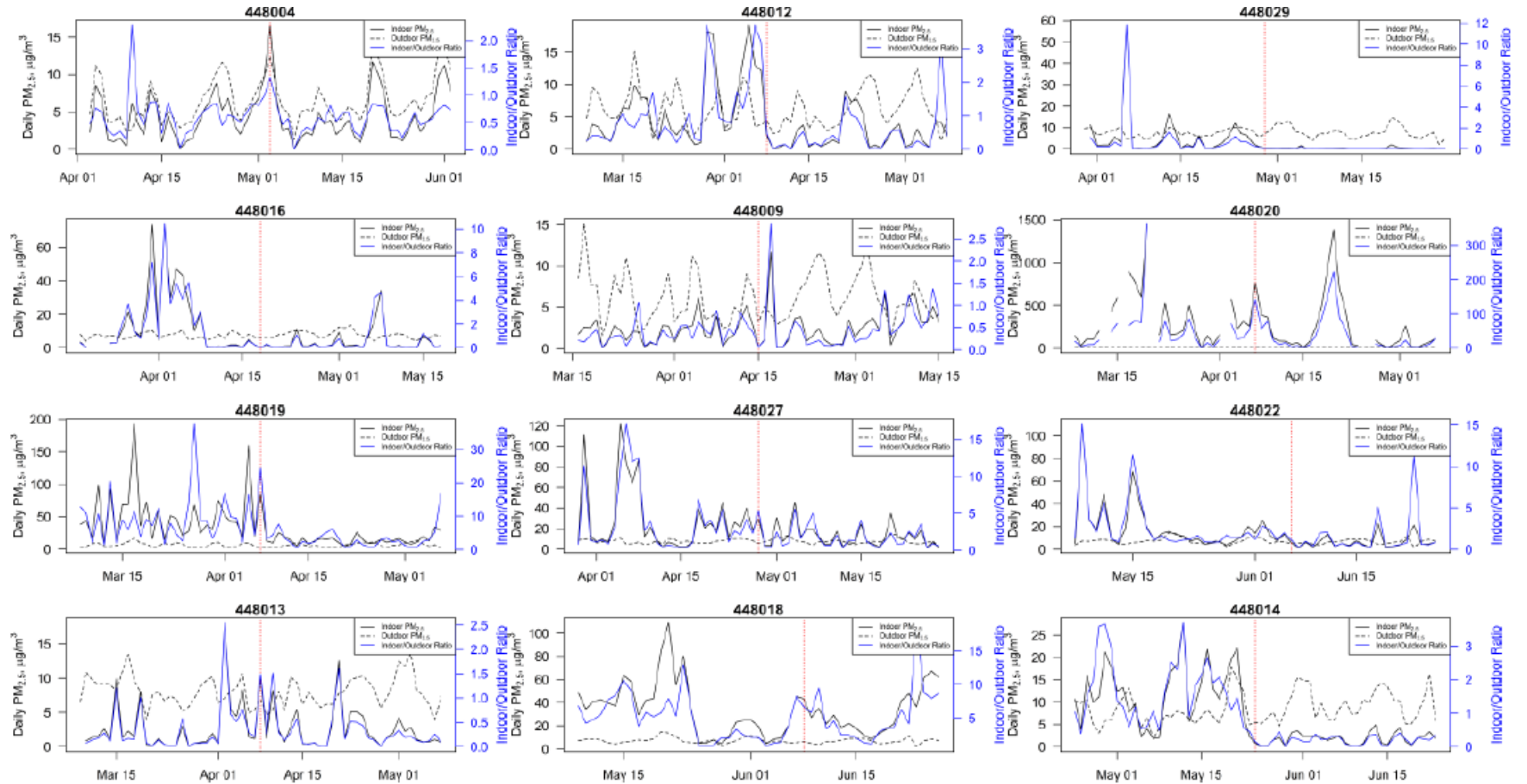
Starting with a Pilot and an Assessment

National Center for
HEALTHY HOUSING



HEALTHY HOUSING IN ALEXANDRIA:
Where We Are and Where We Can Go

2021 | NOVEMBER



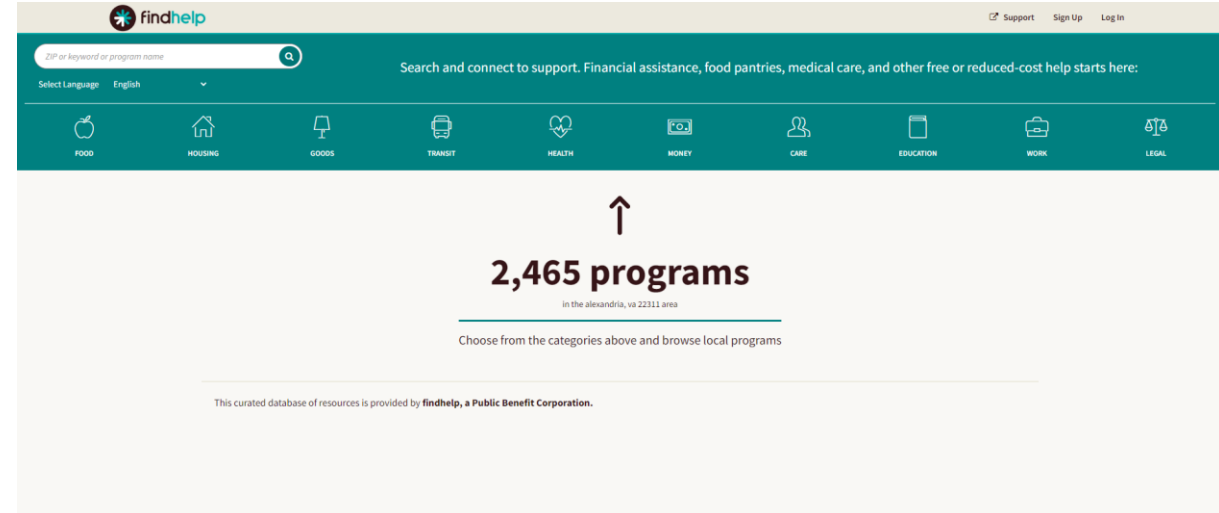
Healthy Homes Action Plan Priorities

2023 Focus Area At-a-Glance:

1. Convene a formal Healthy Homes Network of partner organizations to coordinate service delivery and implement strategies with measurable goals.
2. Work with impacted residents, property managers, and other stakeholders to identify pain points and opportunities within the current healthy homes ecosystem.
3. Implement then evaluate solutions that have been co-designed with residents and partners, then build a detailed flow and system map of resources for internal and external use.
4. Institutionalize and/or expand healthy home programs and data sources to best serve residents.

Goal 1: Network and Database

- Network launch in June 2023 with 25+ organizations
- Selected findhelp.org to host all relevant resources:
 - Ease (FindHelp already exists)
 - Language Accessibility
 - Mobile Accessibility
 - Can include other resources like weatherization
 - No Gatekeeping (for residents or orgs)



Goal 2: Meaningful Engagement

Property manager conversation to:

- Understand their biggest challenges
- Develop relationships for future solution creation

Resident survey to:

- Identify which home conditions are most important to residents
- Understand common healthy housing challenges

Conversation with Property Managers

Virtual meeting with 12 individuals

Goal: Understand their barriers and views

“Wishlist” items	Challenges
More preventative measures such as maintenance inspections	Addressing smoking and pet violations
Increased staff capacity	Relationships with tenants
Support for tenant mental, social, and emotional health	Lack of dependability and trust with contractors hired to complete repairs
Increased tenant knowledge on housekeeping best practices	Landlord-tenant language barriers

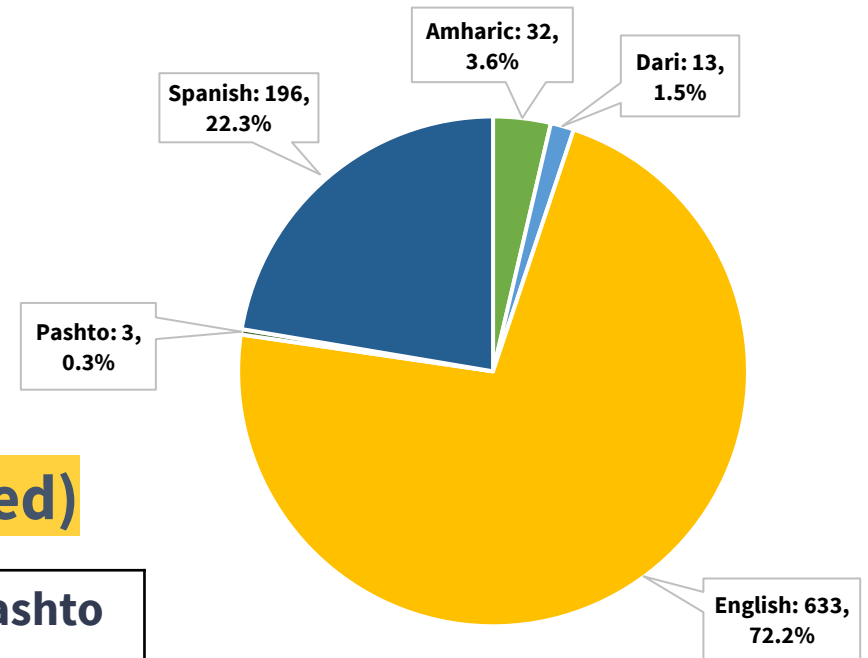
Who filled out the survey?

November 28 – January 12

905 total responses

55% of responses from online survey
45% of responses from paper surveys

877 within Alexandria City ZIP codes (or undefined)



2023 Healthy Homes Survey

English	Spanish	Amharic	Dari	Pashto
72.2%	22.3%	3.6%	1.5%	0.3%

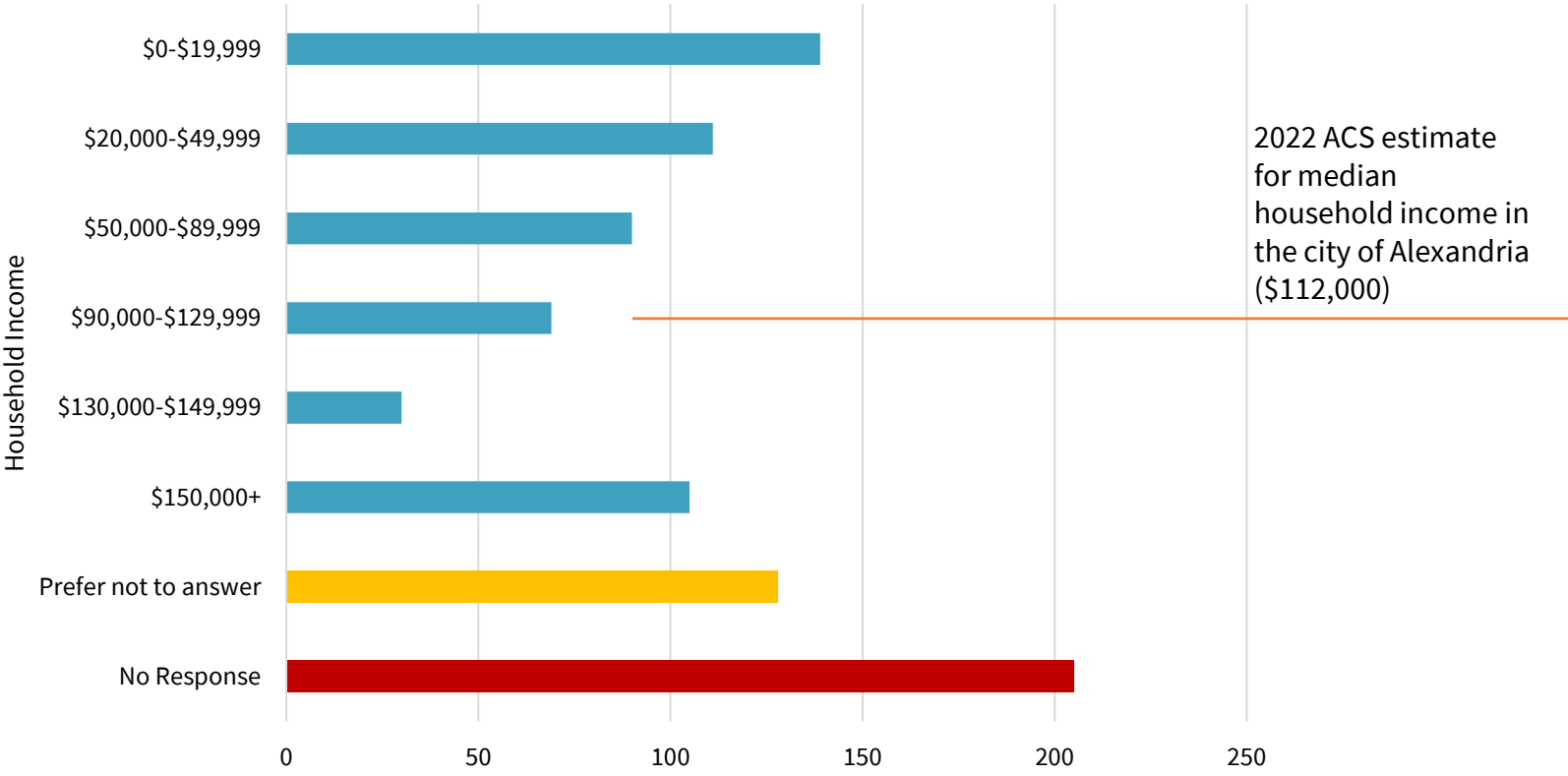
2018 Community Health Survey

English	Spanish	Amharic	Farsi	Arabic
91.3%	7.0%	0.6%	0.1%	1.0%

March 2024



Who filled out the survey?

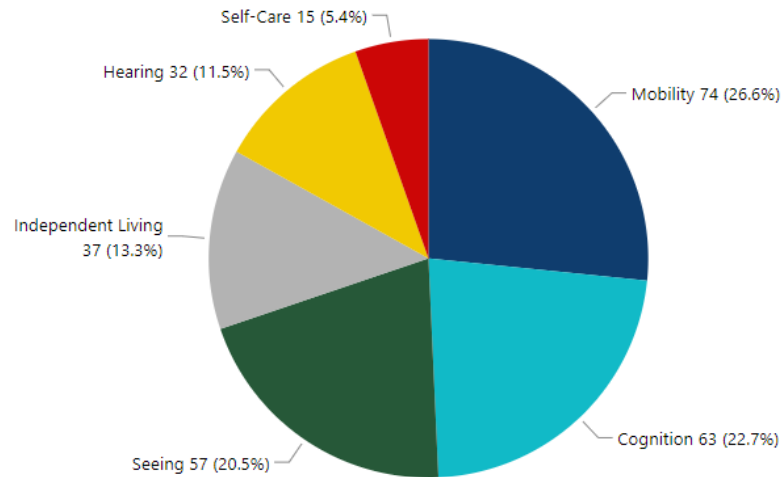


ZIP Code	2023
22206	0.3%
22301	5%
22302	6%
22304	20%
22305	16%
22311	13%
22312	4%
22314	14%
No Response	22%



Who filled out the survey?

Count (%) of Respondents with Any Disability, alone or in combination



Note: Respondents could select that they have multiple functional disabilities. Of the 877 survey respondents, 169 reported that they have any disability. Each type of functional disability presented above was counted individually, for a total of 278 selections.

Race/Ethnicity*	HH Survey	'22 ACS
White or Caucasian	31%	51%
Hispanic or Latino	22%	17%
Black or African American	16%	21%
Asian	4%	6%
Middle Eastern/North African	2%	--
Native Hawaiian or Other Pacific Islander	0.1%	0.02%
American Indian/Alaskan Native	0%	0.3%
Two or more races	3%	16%
Another Race	1%	5%
Prefer not to answer	4%	--
No response	17%	--

*single Race/Ethnicity

What are the biggest concerns?

How would you describe your current living situation?

Home Conditions	# Responses	% Responses*
Has pests, like bugs, mice, or rats	278	35%
Smells like tobacco or marijuana smoke	172	21%
Signs of mold or moisture	170	21%
Needs major repairs	131	16%
Cluttered	94	12%
Crowded, not enough space for everyone	86	11%
Air conditioning and/or heating not working	67	8%
Broken plumbing and/or unsafe drinking water	60	7%

*out of 805 responses

What does a healthy home mean to you?

Home Conditions	# Responses	% Responses*
Clean	203	30%
Safe and secure	151	22%
Support physical and emotional well-being (health, comfort)	143	21%
Ventilated and good air quality	140	21%
Free of pests	125	18%
Well maintained, timely repairs	106	16%
Free of environmental hazards (mold, harmful substances)	96	14%
Access to basic amenities, working utilities	88	13%

*out of 678 responses



What are the biggest concerns?

22304	# Responses
Pests	42 (25%)
Smoke	29 (17%)
Mold	26 (15%)
Cluttered	22 (13%)
Repairs	16 (9%)

Out of 169 respondents

22305	# Responses
Pests	72 (53%)
Smoke	51 (38%)
Mold	48 (35%)
Repairs	45 (33%)
Crowded	28 (21%)

Out of 136 respondents

22311	# Responses
Pests	66 (60%)
Smoke	35 (32%)
Mold	27 (25%)
Repairs	20 (18%)
Water/Plumbing	19 (17%)

Out of 110 respondents

What does a healthy home mean to you?

“A safe place where there's no violations or threatening sounds (gunshots) or foul, gas or marijuana fumes in the air” – 22304

“Safe for anyone to live in and not [just] specific sections of society.” – 22304

“A place where I don't have to worry about my immediate wellbeing.” – 22301

“Safe place for my baby” – ZIP code unknown

“That I can age in place safely.” – 22305

What does a healthy home mean to you?

“For my sons, to have no insects, rats, and cockroaches, animals. To have no fumes of marijuana.” – 22311

“Free from pests--bugs and mice, quick repairs when requested, fair and affordable rent prices, remediated mold and lead so the environment is safe.” – 22314

“Clean of toxins and toxic behavior” – 22304

“Plenty of love and everyone's needs are met” – 22305

“The home is in good condition. The air should be clean and there should be fresh foods.” – 22301

Goal 3: Implementing Solutions

Coming soon!

Goal 4: Programs and Data

- ALX Breathes
 - ~17 homes enrolled; participation jumped after Telemundo spot
 - Addressing indoor air quality
- Developing metrics
 - Exploring sources like 311
 - Collaboration with metrics workgroup and support from Georgetown interns






Complex Challenges to Unpack

- How can property managers best enforce smoke-free policies?
- What would a harm reduction model for overcrowding look like?
- Which existing datasets can be mined to assess the state of healthy homes and whether we're having an impact?
- Which internal or external systems and processes can be modified to better address pest and mold issues?

Community Health Assessment - 2018

Quantitative: dozens of indicators, by disparity, progress, and benchmark

Figure E13. Neighborhood and Build Environment

 Disparities	 Progress	 Benchmarks	12 Indicators
<ul style="list-style-type: none"> • Low-income (>30% median income on rent) • Younger adults (>30% income on rent) • Older adults (>30% income on rent) • 22302, 22305, 22304, 22311, 22312, 22314 (>30% income on rent) <p><i>Alexandria has more residential segregation than high-ranking counties</i></p> <p><i>Disparities in category mostly 10-99% different</i></p>	<p>3 improved:</p> <ul style="list-style-type: none"> • Air pollution • Residential segregation measures <p>3 stayed the same or worsened:</p> <ul style="list-style-type: none"> • Workers who walk • Long commute alone • Renters who spend >30% of income on rent <p>6 not assessed</p>	<p>Met 2 HP2020 benchmarks: public transit and walking to work</p> <p>Worse than state, region, and top performing counties on 6 indicators (median rent, worry about paying rent/mortgage, air pollution, residential segregation)</p> <p>8 not assessed</p>	<ul style="list-style-type: none"> • Food Environment Index • Average daily particulate matter • Long commute driving alone • SNAP Certified stores • Residential segregation non-white/white index • Residential segregation Black/white index • Renters spending 30% or more on rent • Mean travel time to work • Workers commuting via public transit • Workers who walk to work • Physical environment ranking • Recreation and fitness facilities

Community Health Assessment - 2018

Qualitative: survey +
photovoice + stories

1. In your opinion, what are the greatest strengths of our community?

Please select up to THREE (3) boxes below:

- Opportunities to be involved in the community
 - Diversity of the community (social, cultural, faith, economic)
 - Access to healthy food (fresh fruits and vegetables)
 - Housing that is affordable
 - Services that support basic needs (food, clothing, temporary cash assistance)
 - Access to health care
 - Educational opportunities (schools, libraries, vocational programs, universities)
 - A good place for children
 - A good place for older adults
 - Jobs and a healthy economy
 - Transportation options
 - Mental health and substance abuse services
 - Police, fire and rescue services
 - Safe place to live
 - Parks and recreation
 - Walk-able, bike-able community
 - Clean and healthy environment
 - Arts and cultural events
 - Other (please specify):
-

2. In your opinion, what are the most important health issues for our community?

Please select up to THREE (3) boxes below:

- Dental problems
 - Teen pregnancy
 - Maternal, infant and child health
 - Violence and abuse
 - Preventable injuries (car or bicycle crashes, falls)
 - Aging-related health concerns
 - Tobacco use (cigarettes, vaping, e-cigarettes, snuff, chewing tobacco)
 - Alcohol, drug, and/or opiate abuse
 - Mental health problems (depression, anxiety, stress, suicide)
 - Obesity
 - Other chronic health conditions (asthma, cancers, diabetes, heart disease, stroke)
 - Illnesses spread by insects and/or animals (Lyme disease, Zika, rabies)
 - Sexually transmitted diseases
 - HIV
 - Other illnesses that spread from person to person (flu, TB)
 - Vaccine preventable diseases (whooping cough, measles, tetanus)
 - Food safety
 - Intellectual disabilities (autism, developmental disabilities)
 - Sensory disabilities (hearing, vision)
 - Physical disabilities
 - Differences in health outcomes for different groups of people
 - Other (please specify):
-

Community Health Assessment - 2024

- Representation on CHA Steering Committee
- Guidance on indicators
- Guidance on survey language
- Connections with environmental/climate plans
- CHIP prioritization, strategies, and tactics

Other Climate/Health Opportunities

- State of the Air work
- Shared communications and messaging, including resident education
- Ensuring residential air quality is highlighted
- Blending weatherization with home issues
- Understanding third space air
- Other ways?