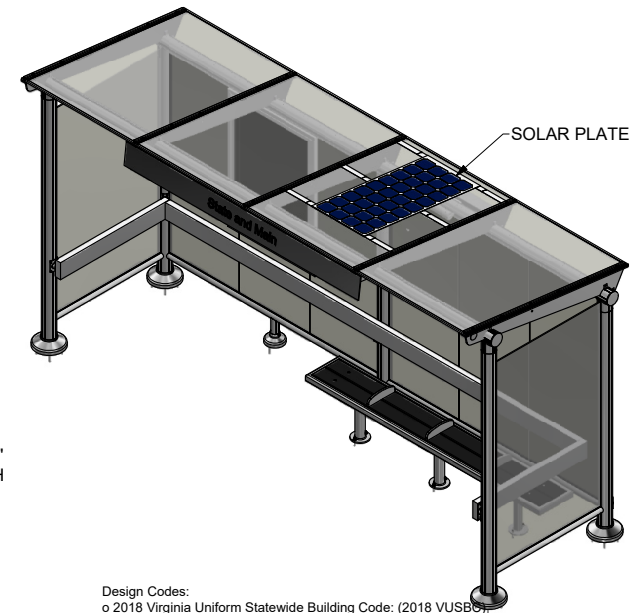
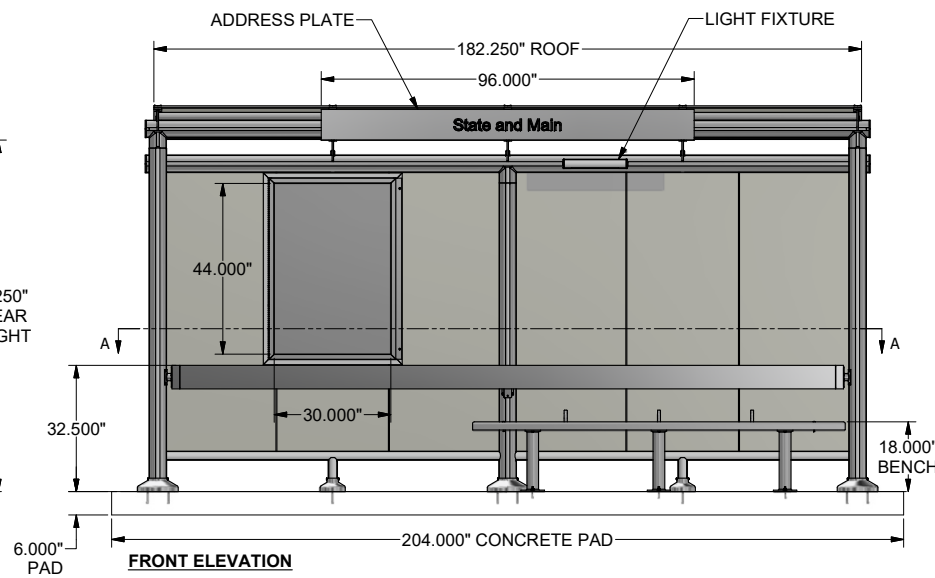
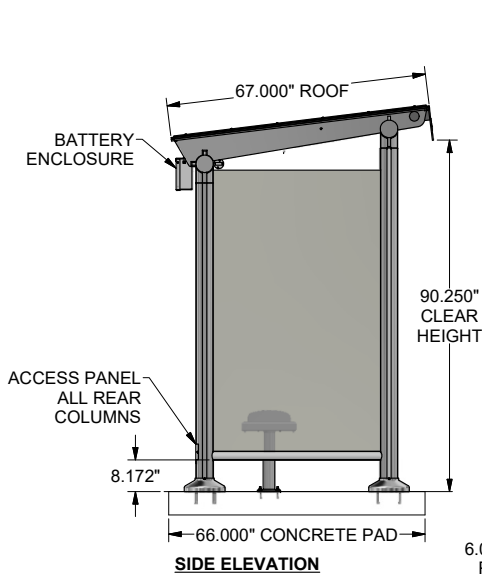
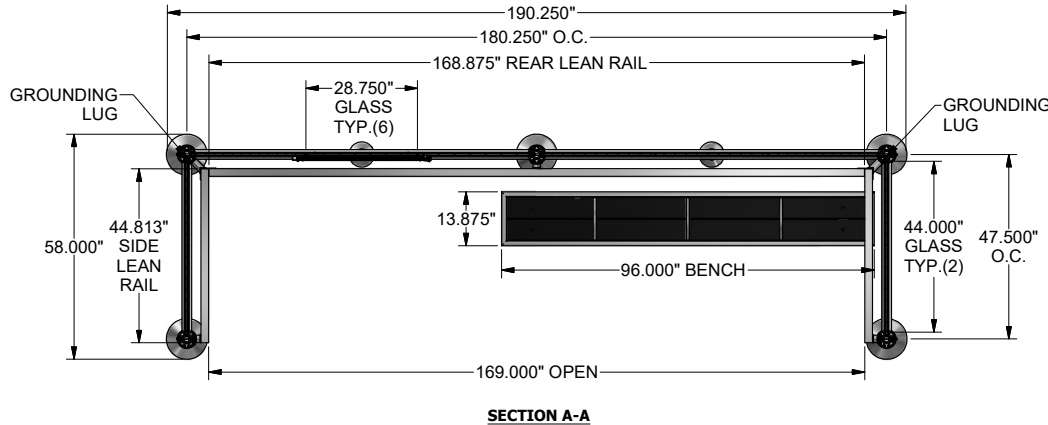


- HEADER AND REAR COLUMNS TO BE PREPPED WITH PULL STRING.




CONCRETE THICKNESS: 6"  
 CONCRETE PAD LENGTH: 17'-0"  
 CONCRETE PAD WIDTH: 5'-6"  
 REINFORCEMENT: #4 @ 16" EW

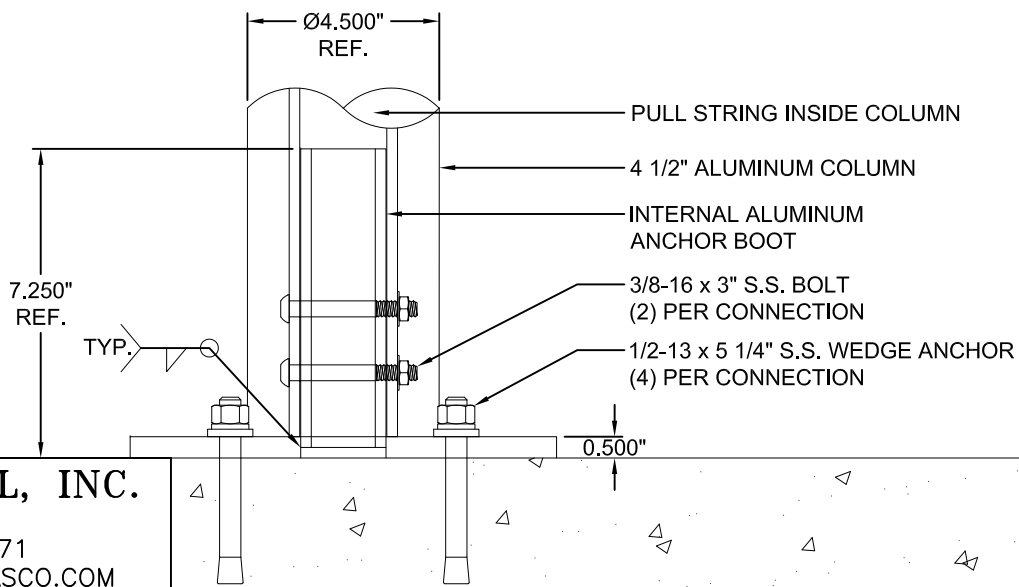
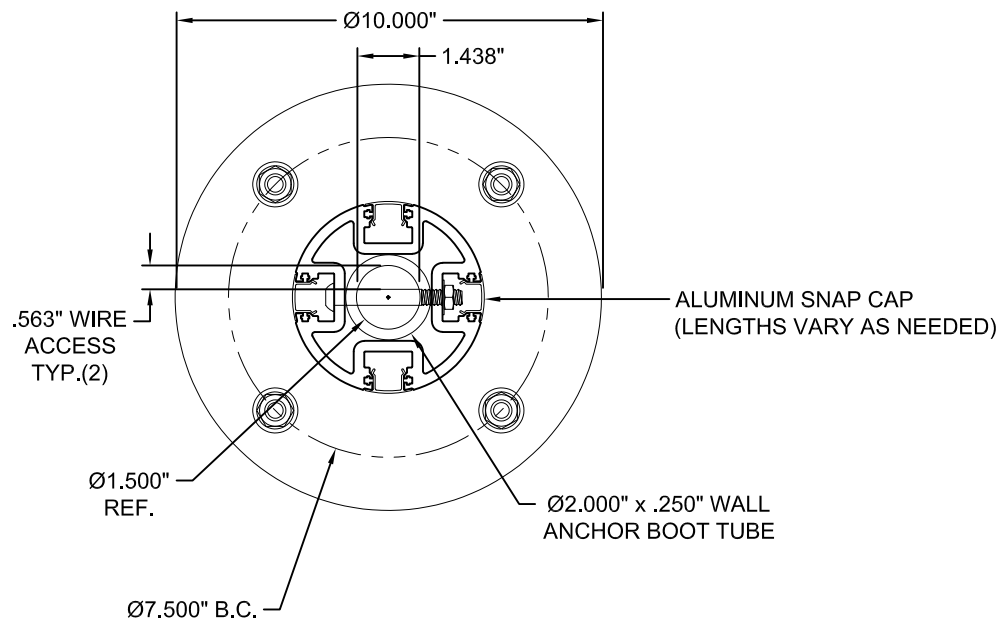


Design Codes:  
 o 2018 Virginia Uniform Statewide Building Code: (2018 VUSBC)  
 o 2018 Virginia Construction Code: Part I of the VUSBC (2018 VCC)  
 o Handicapped Accessibility: 2010 ADA Standards for Accessible Design - 9/15/2010 (2010 ADA Standards) for the Prototype Bus Shelter and mounting floor slab.  
 o Accessibility Guidelines for Pedestrian Facilities in the Public Right of Way: Public Rights-of-Way Accessibility Guidelines - 7/26/2011 (PROWAG). Required for the site adaptation approaches to the Prototype Bus Shelter.  
 o Per CPSM 4.2.2, including 4.2.2.8: accessible facilities must be provided at the completion of construction. Additionally, per CPSM 4.2.2.8; all areas and spaces normally occupied by employees or the public in state-owned buildings, individually or shared, shall be fully accessible.  
 Structural Design Data  
 o Roof Live Load, per VUSBC 1603.1.2; 20 psf  
 o Floor Live Load, per VUSBC 1603.1.1; 100 psf  
 o Roof Snow Load Data, per VUSBC 1603.1.3; 25 psf  
 o Wind Design Data, per VUSBC 1603.1.4 - Wind Speed (mph); (Ultimate Wind Speed) 111mph  
 o Wind Exposure Category: C  
 o Risk Category, per VUSBC 1604.5; II  
 o Seismic Design Category B  
 o Seismic Site Class D  
 o Soil bearing requirements 1500 psf  
 o VUSBC Construction Type; IIB  
 o (Use) Group(s) per VUSBC; U  
 o Building Gross Floor Area 60 SF  
 o Building Area (per VUSBC definition) 60 SF  
 o Height of Building; 8 ft  
 o Number of Stories; 1 Story  
 o Construction Type - Type IIB  
 o Occupancy Classification - Group U

QUANTITY (XX) SHELTERS THUS

- SPECIFICATIONS:**
- RAL9017 TRAFFIC BLACK POWDER COATED ALUMINUM STRUCTURE
  - 3/8" CLEAR LAMINATED SAFETY GLASS
  - 8' ECLIPSE BENCH WITH BLACK HDPE SLATS AND (3) SEAT DIVIDERS
  - 30" x 44" VIEWABLE DISPLAY CASE (REAR WALL)
  - 2" x 6" ALUMINUM LEAN RAIL (INTERIOR)
  - SPUN ALUMINUM ANCHOR PLATE COVERS
  - 96" ALUMINUM ADDRESS PLATE WITH VINYL GRAPHIC (T.B.D.)
  - 3/8" GREY POLYCARBONATE SLOPED ROOF
  - SOLAR POWERED LIGHTING PACKAGE WITH L.E.D. LIGHT FIXTURE AND BATTERY ENCLOSURE

	BRASCO INTERNATIONAL, INC. 32400 INDUSTRIAL DR. MADISON HEIGHTS, MICHIGAN 48071 1-800-893-3665 WWW.BRASCO.COM		CUSTOMER:	CITY OF ALEXANDRIA		DESIGNER:	HAUS	CHECKER:	BDH	
	THIS DRAWING IS CONFIDENTIAL AND IS FOR THE SOLE USE OF OUR CUSTOMERS AND MAY NOT BE REPRODUCED OR COPIED WITHOUT WRITTEN PERMISSION FROM BRASCO INTERNATIONAL.		PROJECT:	ECLIPSE STYLE SHELTER		DATE:		DATE:		
			MODEL:	EC-0516-F-0-SL-PC-LG-0-0-0	JOB #	6899	SHEET:	S-001	REVISION:	A

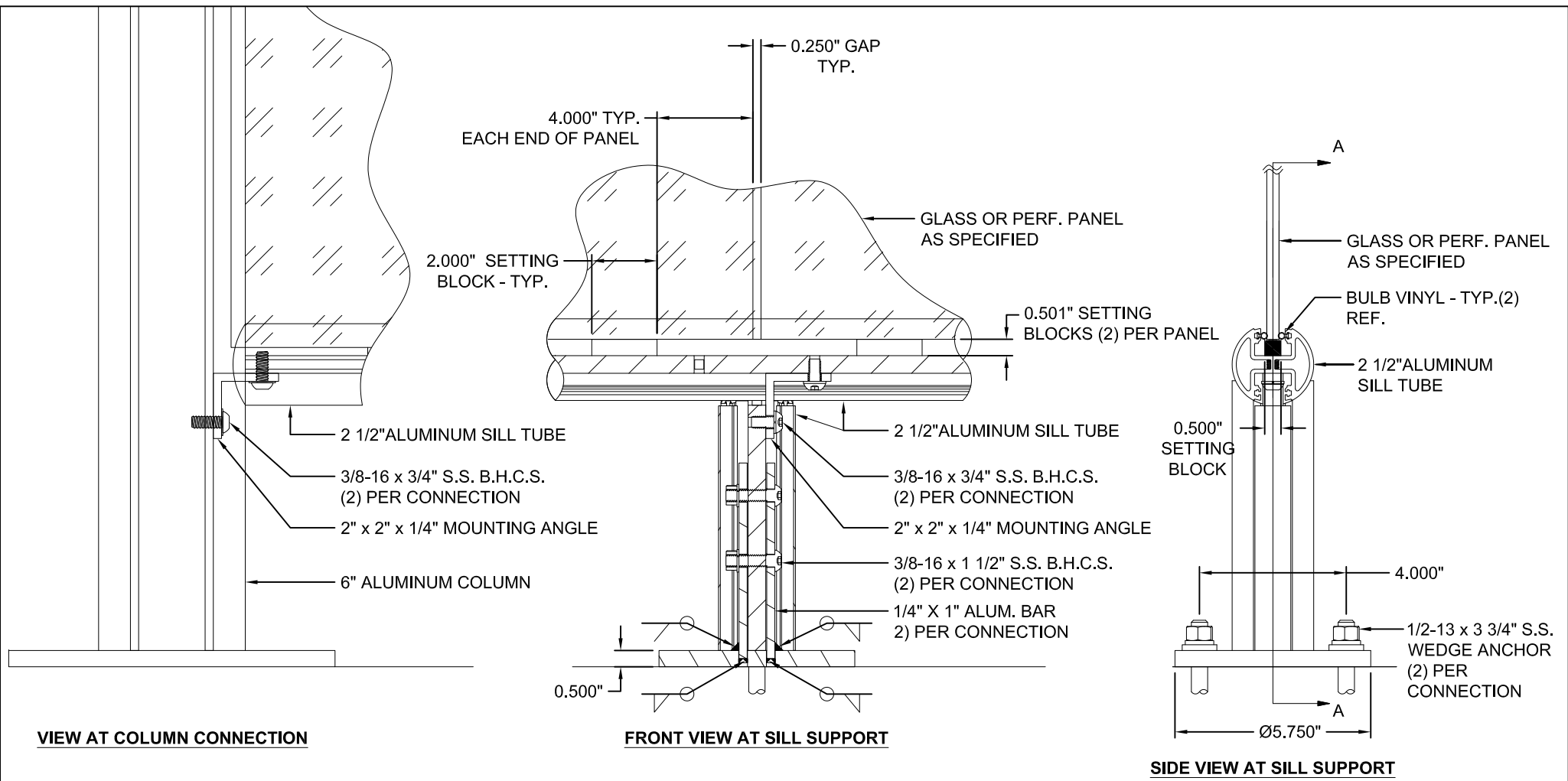


**BRASCO INTERNATIONAL, INC.**  
 32400 INDUSTRIAL DRIVE  
 MADISON HEIGHTS, MI 48071  
 1-800-893-3665 WWW.BRASCO.COM

THIS DRAWING IS CONFIDENTIAL AND IS FOR THE SOLE USE OF OUR CUSTOMERS AND MAY NOT BE REPRODUCED OR COPIED WITHOUT WRITTEN PERMISSION FROM BRASCO INTERNATIONAL.  
**LEAD TIME BEGINS UPON RECEIPT OF SIGNED APPROVAL.**

SIGNED: \_\_\_\_\_ DATE: \_\_\_\_\_

CUSTOMER:		ENGINEER:	HAUS
DETAIL:	SHELTER ANCHORING	DATE:	
MODEL:	ECLIPSE SERIES	JOB #	6899
		SHEET #:	002



**BRASCO INTERNATIONAL, INC.**

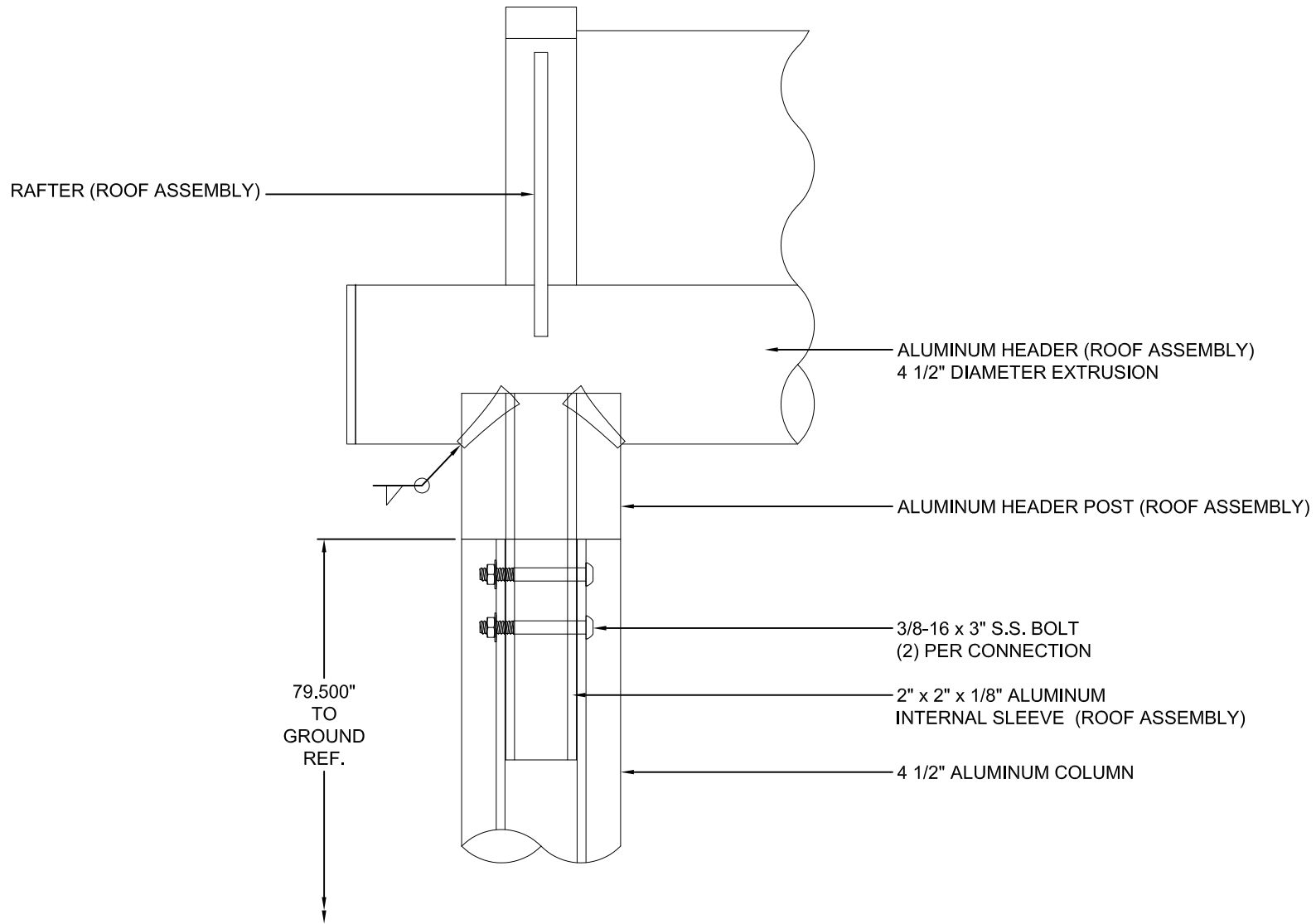
32400 INDUSTRIAL DRIVE  
 MADISON HEIGHTS, MI 48071  
 1-800-893-3665 WWW.BRASCO.COM

THIS DRAWING IS CONFIDENTIAL AND IS FOR THE SOLE USE OF OUR CUSTOMERS AND MAY NOT BE REPRODUCED OR COPIED WITHOUT WRITTEN PERMISSION FROM BRASCO INTERNATIONAL.  
**LEAD TIME BEGINS UPON RECEIPT OF SIGNED APPROVAL.**

SIGNED: \_\_\_\_\_ DATE: \_\_\_\_\_

CUSTOMER:		ENGINEER:	HAUS
DETAIL:	SILL ATTACHMENT AND CONNECTIONS		DATE:
MODEL:	ECLIPSE SERIES	JOB #	6899
		SHEET #:	003

**NOTE: ROOF ARRIVES FULLY ASSEMBLED**



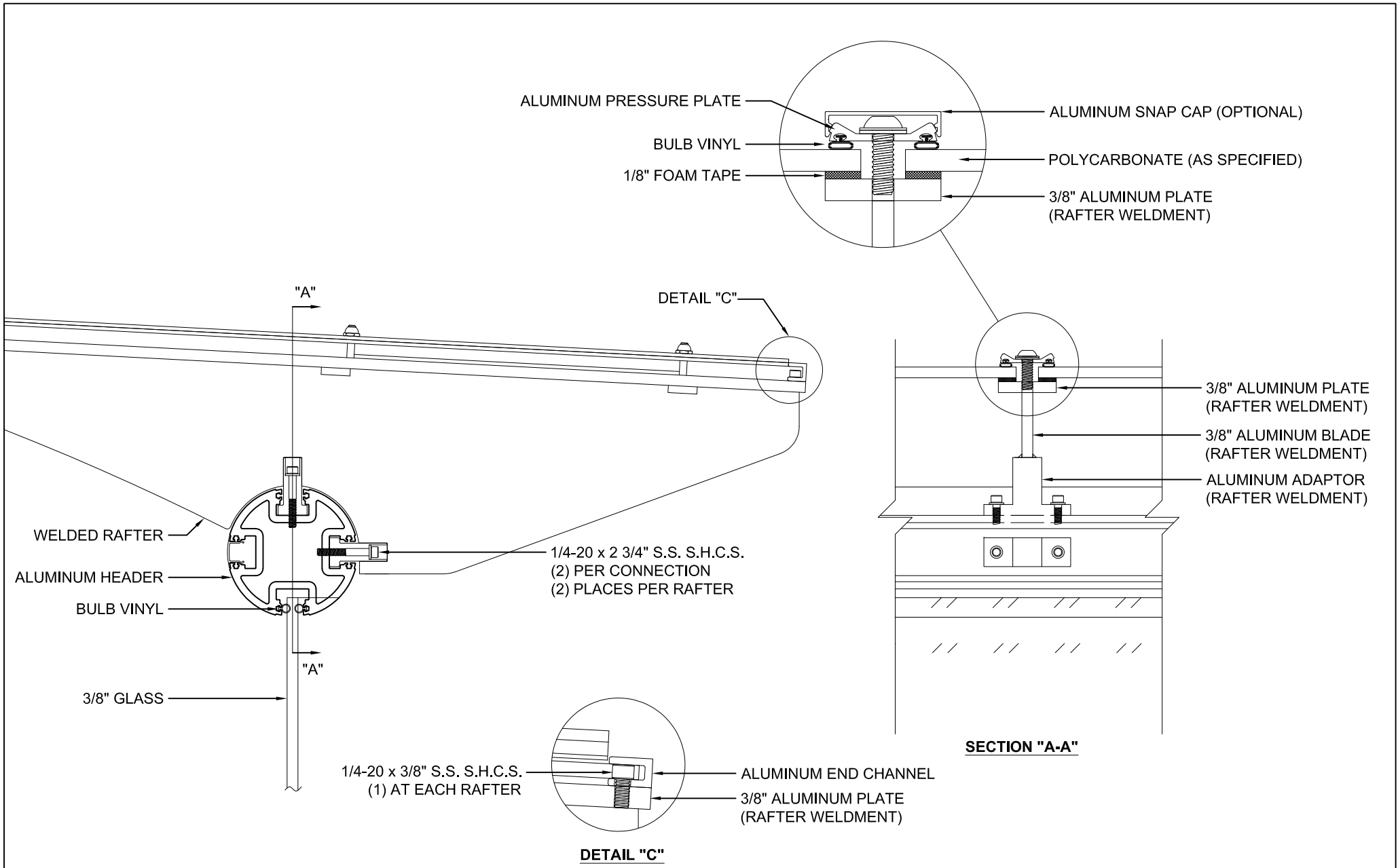
**BRASCO INTERNATIONAL, INC.**

32400 INDUSTRIAL DRIVE  
MADISON HEIGHTS, MI 48071  
1-800-893-3665 WWW.BRASCO.COM

THIS DRAWING IS CONFIDENTIAL AND IS FOR THE SOLE USE OF  
OUR CUSTOMERS AND MAY NOT BE REPRODUCED OR COPIED  
WITHOUT WRITTEN PERMISSION FROM BRASCO INTERNATIONAL.  
**LEAD TIME BEGINS UPON RECEIPT OF SIGNED APPROVAL.**

SIGNED: \_\_\_\_\_ DATE: \_\_\_\_\_

CUSTOMER:		ENGINEER:	HAUS
DETAIL:	HEADER ATTACHMENT TO COLUMN		DATE:
MODEL:	ECLIPSE SERIES	JOB #	6899
		SHEET #:	004



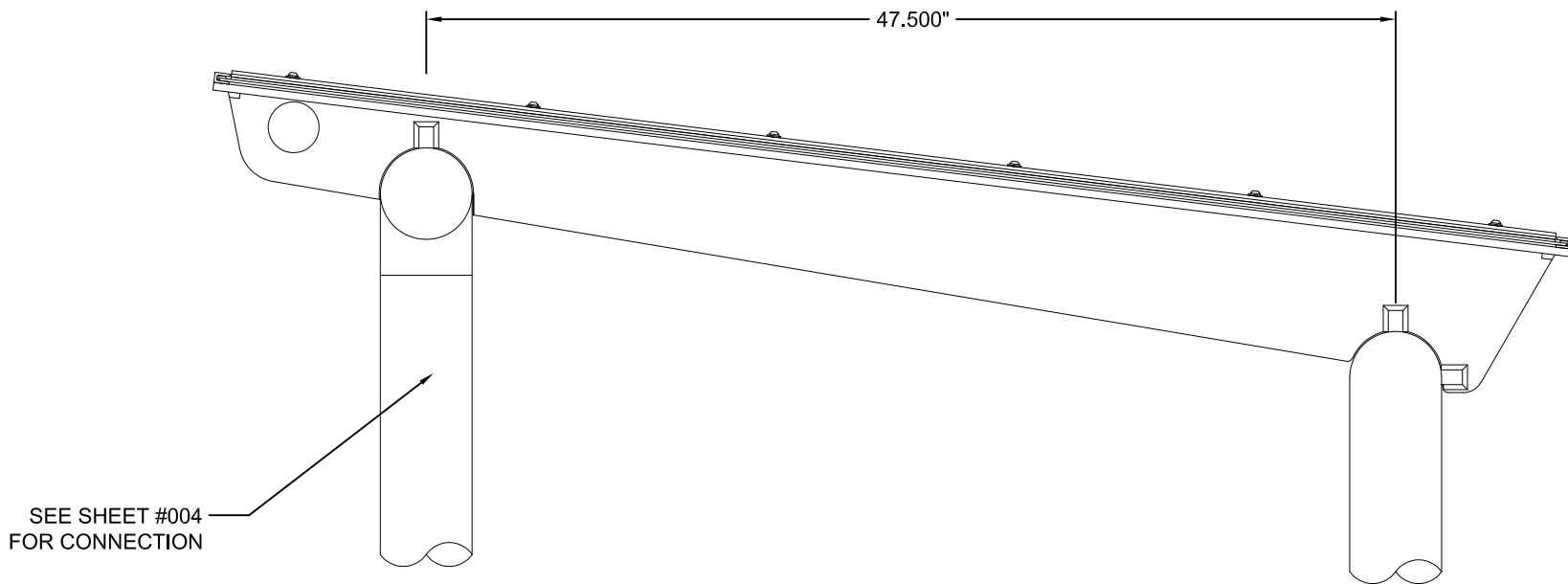
**BRASCO INTERNATIONAL, INC.**

32400 INDUSTRIAL DRIVE  
 MADISON HEIGHTS, MI 48071  
 1-800-893-3665 WWW.BRASCO.COM

THIS DRAWING IS CONFIDENTIAL AND IS FOR THE SOLE USE OF OUR CUSTOMERS AND MAY NOT BE REPRODUCED OR COPIED WITHOUT WRITTEN PERMISSION FROM BRASCO INTERNATIONAL.  
**LEAD TIME BEGINS UPON RECEIPT OF SIGNED APPROVAL.**

SIGNED: \_\_\_\_\_ DATE: \_\_\_\_\_

CUSTOMER:		ENGINEER:	HAUS
DETAIL:	RAFTER AND ROOF ATTACHMENTS		DATE:
MODEL:	ECLIPSE SERIES	JOB #	6899
		SHEET #:	005



**BRASCO INTERNATIONAL, INC.**

32400 INDUSTRIAL DRIVE  
MADISON HEIGHTS, MI 48071  
1-800-893-3665 WWW.BRASCO.COM

THIS DRAWING IS CONFIDENTIAL AND IS FOR THE SOLE USE OF OUR CUSTOMERS AND MAY NOT BE REPRODUCED OR COPIED WITHOUT WRITTEN PERMISSION FROM BRASCO INTERNATIONAL.  
**LEAD TIME BEGINS UPON RECEIPT OF SIGNED APPROVAL.**

SIGNED: \_\_\_\_\_ DATE: \_\_\_\_\_

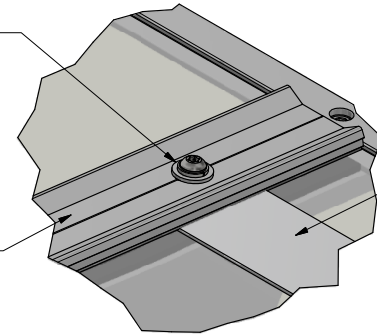
CUSTOMER:		ENGINEER:	HAUS
DETAIL:	FRONT COLUMN TO ROOF ATTACHMENT		DATE:
MODEL:	ECLIPSE SERIES	JOB #	6899
		SHEET #:	006

SOLAR PANEL ATTACHMENT

1/4-20 x 1" S.S. B.H.C.S. WITH  
WASHER & LOCK WASHER - TYP.

GASKETED PRESSURE CAP

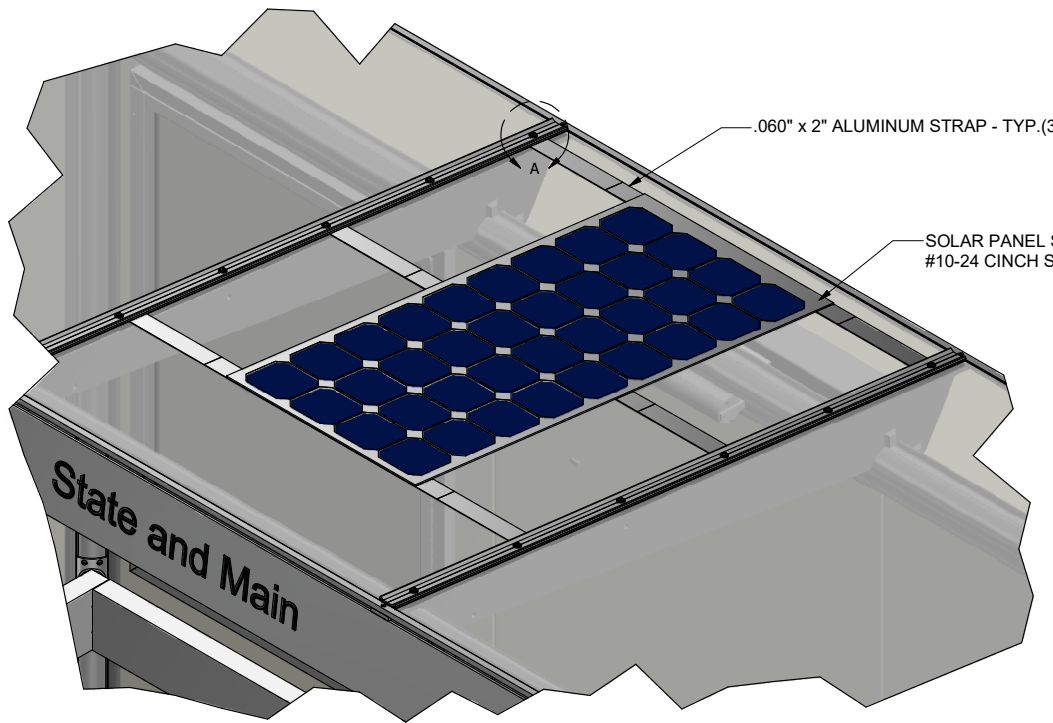
STRAPS SECURED  
UNDERNEATH PRESSURE CAPS



**DETAIL A**

.060" x 2" ALUMINUM STRAP - TYP.(3)

SOLAR PANEL SECURED TO STRAPS WITH  
#10-24 CINCH STUDS AND LOCK NUTS - (6) PLACES

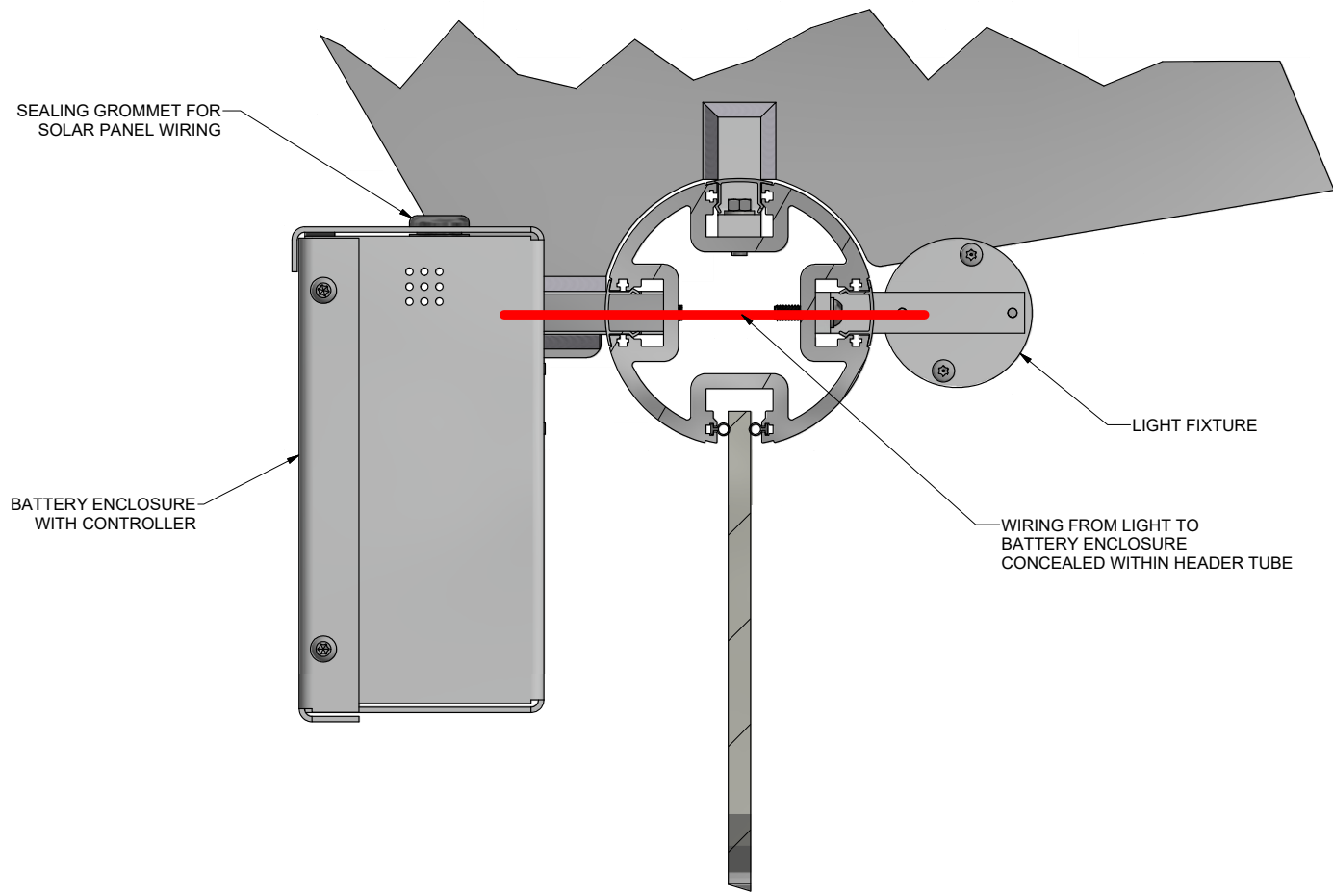


BRASCO INTERNATIONAL, INC.  
32400 INDUSTRIAL DR.  
MADISON HEIGHTS, MICHIGAN 48071  
1-800-893-3665 WWW.BRASCO.COM

THIS DRAWING IS CONFIDENTIAL AND IS FOR THE SOLE USE OF  
OUR CUSTOMERS AND MAY NOT BE REPRODUCED OR COPIED  
WITHOUT WRITTEN PERMISSION FROM BRASCO INTERNATIONAL.

CUSTOMER:	CITY OF ALEXANDRIA	DESIGNER:	HAUS	CHECKER:	BDH
PROJECT:	ECLIPSE STYLE SHELTER	DATE:		DATE:	
MODEL:	SOLAR PANEL ATTACHMENT	JOB #	6899	SHEET:	007
		REVISION:			A

BATTERY ENCLOSURE AND LIGHT DETAIL



BRASCO INTERNATIONAL, INC.  
 32400 INDUSTRIAL DR.  
 MADISON HEIGHTS, MICHIGAN 48071  
 1-800-893-3665 WWW.BRASCO.COM

THIS DRAWING IS CONFIDENTIAL AND IS FOR THE SOLE USE OF OUR CUSTOMERS AND MAY NOT BE REPRODUCED OR COPIED WITHOUT WRITTEN PERMISSION FROM BRASCO INTERNATIONAL.

CUSTOMER:	CITY OF ALEXANDRIA	DESIGNER:	HAUS	CHECKER:	BDH
PROJECT:	ECLIPSE STYLE SHELTER	DATE:		DATE:	
MODEL:	BATTERY ENCLOSURE AND LIGHT	JOB #	6899	SHEET:	008
				REVISION:	A