

POTOMAC YARD

Planning Advisory Group

Please Join Us for a Community Workshop on the Redevelopment of Potomac Yard

When:

Saturday, January 31, 2009
9:00 AM – 12:30 PM

Where:

George Washington Middle School
Cafeteria
1005 Mount Vernon Avenue, Alexandria

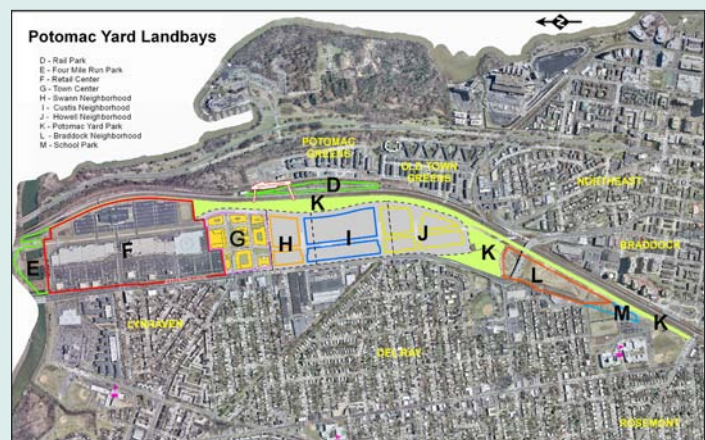
Why You Should Be There:

- 1 Learn about the planning process that is underway to create a plan for the redevelopment of the existing retail center as well as other portions of Potomac Yard and the ongoing analysis of a potential new metrorail station.
- 2 Meet and talk with the community members serving on the Potomac Yard Planning Advisory Group (PYPAG), and learn about the opportunities for public input that will occur throughout 2009.
- 3 Review the initial draft planning principles developed by the PYPAG and provide direct input to identify key public issues, concerns, desires, and priorities that should be reflected in the planning principles.
- 4 Provide your ideas and input on some key planning challenges facing Potomac Yard that will assist in developing future options.

The planning process is just beginning and will continue through 2009.

This is your chance to help influence the planning and design of one of the largest parcels of land in the City of Alexandria. Its size, gateway location, and potential as a transit hub, make Potomac Yard one of the most important planning decisions facing the City today, and will influence the quality of life for Alexandrians for decades to come. Please plan to participate in this important process.

The PYPAG will meet monthly through June and all meetings are open to the public. A second public workshop to look at initial design options will be held in April 2009.



Potomac Yard comprises a total of 295 acres at the Gateway to Alexandria from Arlington and is bounded by Route 1, The George Washington Memorial Parkway/railroad tracks, and Four Mile Run. The Yard is divided up into a series of phases (or landbays). The main focus of this planning process is to plan for the redevelopment of the existing retail center (Landbay F) which supports Target, Best Buy, Barnes & Noble, Regal Cinemas and others.



For more information, visit the web site at: www.alexandriava.gov/PotomacYardPlan
or call Valerie Peterson at 703-838-3866, extension 338.