

TRANSPORTATION & ENVIRONMENTAL SERVICES

The mission of the Department of Transportation & Environmental Services (T&ES) is to provide excellent multimodal transportation services and facilities, and to protect and enhance the natural environment to improve the quality of life for those live in, work in, and visit the City of Alexandria. The Stormwater services provided by T&ES contribute to the achievement of this mission. Figure 1 shows a simplified version of T&ES organization.

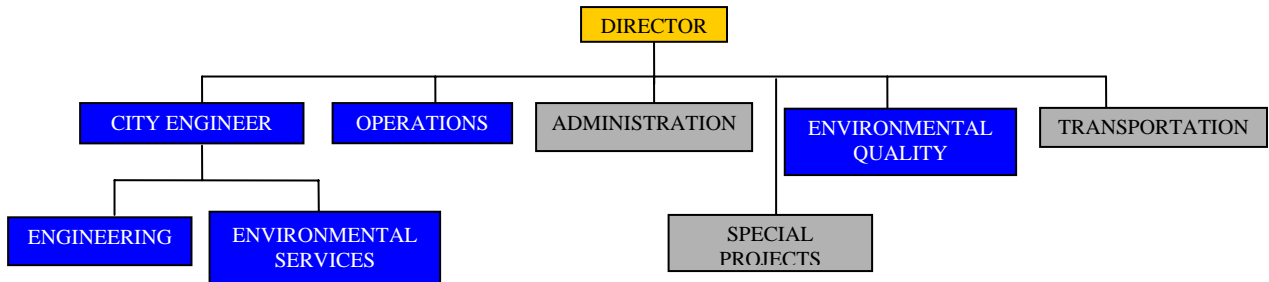


Figure 1. Transportation and Environmental Services Organization Chart

The stormwater services within T&ES are provided by three Divisions: City Engineer/Engineering Services, Operations, and Environmental Quality. The following tables show only the stormwater-related services provided by these Divisions.

Table 1. Stormwater-Related Services Provided by the Engineering Services Division

Engineering	
Goal - Provide the activities below to the citizens, contractors, and developers in a timely manner to ensure compliance with Transportation and Environmental Services standards.	
Stormwater-Related Service	Description
Site Plan Review	Review private development plans for conformance with Transportation and Environmental Services design requirements
Development Site Inspection	Conduct inspections to insure construction of public infrastructure for conformance with Transportation and Environmental Services requirements
Permitting	Issue permits for construction activities within the public right-of-way and review building permits for impact on the public right-of-way for conformance with Transportation and Environmental Services requirements
Floodplain Management	Comply with the National Flood Insurance Program and maintain the City's participation in the community rating system in order to provide City property owners with access to discounted flood insurance
Environmental Services	
Goal - Provide design and construction management services for City infrastructure projects to safely meet the needs of the City, while minimizing the impacts on the City.	
Stormwater-Related Service	Description
Design Management	Provide a design solution to an infrastructure problem to maintain the integrity of the City's public infrastructure
Construction Management	Implement the design solutions for infrastructure problems to maintain the integrity of the City's public infrastructure

TRANSPORTATION & ENVIRONMENTAL SERVICES

Table 2. Stormwater-Related Services Provided by the Operations Division

Operations	
Goal - Provide inspection, cleaning, and repair of the City's collection and conveyance system to minimize property damage, health hazards, and pollution of surrounding waters.	
Stormwater-Related Service	Description
Stormwater Sewer Maintenance	Provide continuous inspection and cleaning of public sewers, inspect complaints within 2 hours of notification, and find and eliminate structural and health hazards
Sanitary Sewer Maintenance	
Street Sweeping	Sweep and flush City streets in order to ensure that streets are clean and sanitary

Table 3. Stormwater-Related Services Provided by the Environmental Quality Division

Environmental Quality	
Goal - Provide air, water, and land quality services in order to protect and enhance the public's health and welfare and the City's environment.	
Stormwater-Related Service	Description
Water Quality	Conduct reviews and inspections of City site plans and ensure regulatory requirements are met for City permits in order to protect and manage the watershed