

TRAFFIC & PARKING BOARD PUBLIC HEARING

March 28, 2022

Meeting will start at 7:00 PM



Introductions

Agenda: March 28, 2022

1. Announcement of deferrals & withdrawals
2. Virtual Meeting Resolution
3. Approval of February 28, 2022 Meeting Minutes
4. Staff Written Updates & Public Hearing Follow-up
5. Public Discussion Period
6. Disability Parking Space at 506 Four Mile Road
7. Taxi Fare Surcharge
8. Loading Zone for a Childcare Facility on the 2400 Block of Mandeville Lane
9. Addition of 4 parking spaces on 500 block of Mount Vernon Avenue
10. Staff Updates
11. Commissioner Updates

Consent Items:

Information Items:

Public Hearing Items:

Virtual Meeting Resolution

Approval of the Minutes

Written Updates & Public Hearing Follow-Up

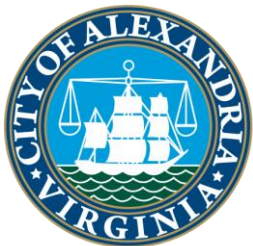
Public Discussion Period

This period is restricted to items not listed on the docket

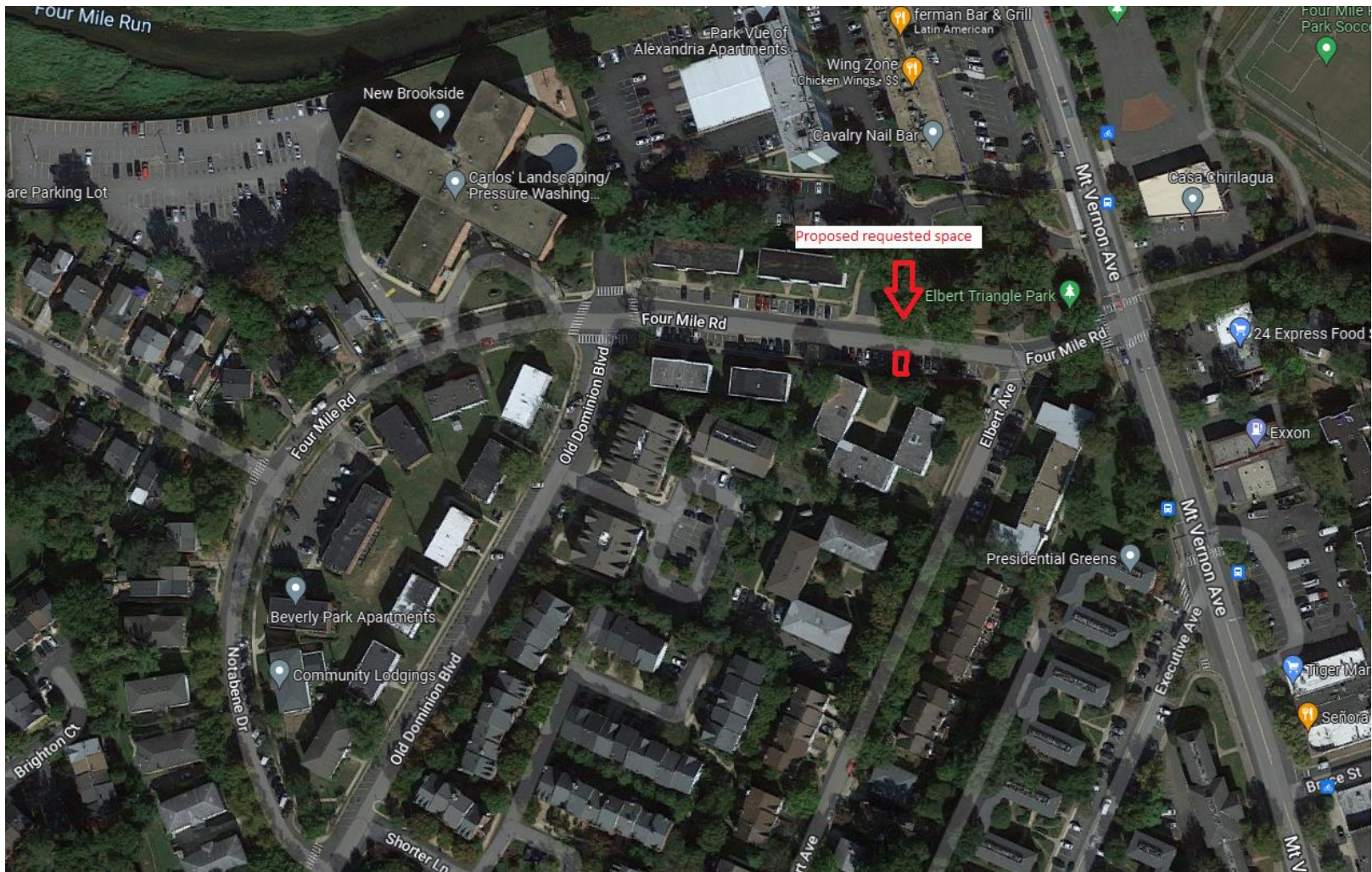
Consideration of a Request to Designate a Disability Parking Space at 506 Four Mile Road

Agenda Item 6

Presenter: Mr. Nguyen



Location: 506 Four Mile Road



Street View



Recommendation

That the Board make a recommendation to the Director of T&ES to designate a disability parking space at 506 Four Mile Road.

Consideration of a Taxi Fare Surcharge

Agenda Item 7

Presenter: Mr. Block



AAA Gas Prices – March 28, 2022



Washington, DC, (VA Only)



	Regular	Mid	Premium	Diesel
Current Avg.	\$4.216	\$4.646	\$4.937	\$5.171
Yesterday Avg.	\$4.212	\$4.652	\$4.940	\$5.168
Week Ago Avg.	\$4.181	\$4.614	\$4.901	\$5.072
Month Ago Avg.	\$3.542	\$3.940	\$4.231	\$3.947
Year Ago Avg.	\$2.813	\$3.201	\$3.467	\$3.014

HIGHEST RECORDED AVERAGE PRICE

	Price	Date
Regular Unleaded	\$4.337	3/11/22
Diesel	\$5.214	3/12/22

Recommendation

That the Board makes a recommendation to the City Manager to authorize a \$1.00 per trip taxi fare surcharge in response to rising gasoline prices

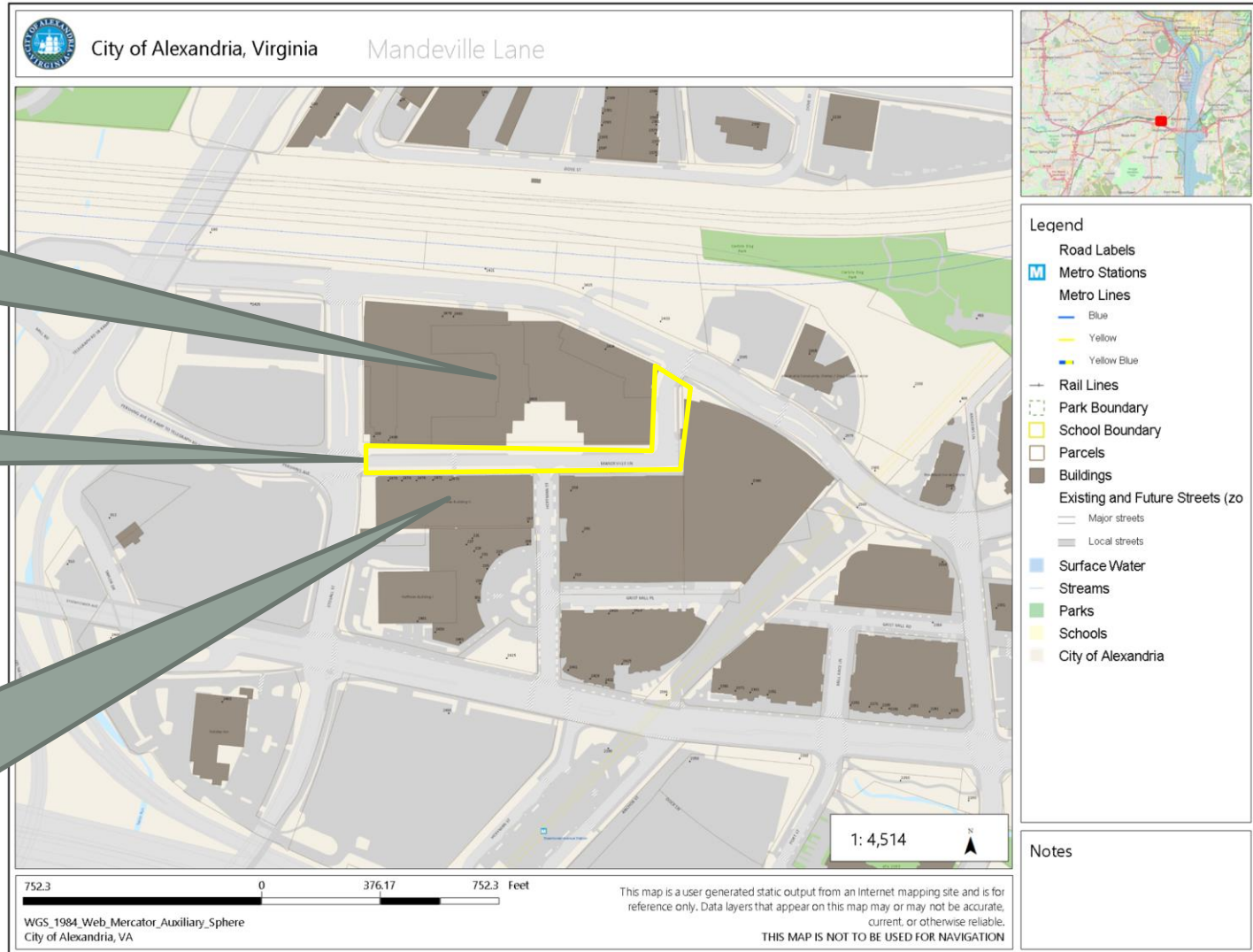
Consideration of a Request to add 15-Minute Loading Only Restrictions for Five On-street Parking Spaces on the 2400 Block of Mandeville Lane

Agenda Item 8

Presenter: Mr. Devilliers



Location



Hoffman Town Center Blocks 4&5 (under construction)

Mandeville Lane: Public Street

2472 Mandeville Lane: Apartments, Retail, Childcare Facility

Aerial View

Looking East



Curb Space Prioritization Framework



Residential	Predominantly residential uses, including detached houses, rowhouses, and apartment buildings	<ul style="list-style-type: none"> • Cameron Station Blvd between Duke St and S. Pickett St • Taney Ave between N. Jordan St and Van Dorn St
Main Streets	Mixed-use neighborhoods with office, residential, and retail uses as well as neighborhood retail corridors	<ul style="list-style-type: none"> • Mt Vernon Ave in Del Ray • King St in Old Town
Office & Commercial	Areas with predominantly office, retail, and other 'Downtown' functions—often high-density and often including residential towers	<ul style="list-style-type: none"> • Eisenhower Ave between Holland Ln and Telegraph Rd in Carlyle • Duke St between Holland Ln and Dulany St
Warehouse and Industrial	Areas with mostly industrial and warehouse uses, including redeveloping areas adding retail uses and residential developments	<ul style="list-style-type: none"> • Wheeler Ave west of S. Early St • S. Pickett St west of Van Dorn St



Curb Space Prioritization Framework

Curb Use Categories

Examples:

City Plan Priorities	Safety improvements, bus lanes, bike lanes, green infrastructure, electric vehicle charging, and other items specifically included in City plans
Access for Goods	Loading zones, deliveries, food pick-up/drop-off
Access for People	Bus stops, pick-up/drop-off, bikeshare stations, scooter corrals
Parking	Metered parking, residential parking, bike parking
Activation	Parklets, in-street dining, public art

Curb Space Prioritization Framework

Priority:	Residential	Main Streets	Office & Commercial	Warehouse & Industrial
1: High	City Plan Priorities			
2	Access for People	Access for People	Access for People	Access for Goods
3	Parking	Access for Goods	Access for Goods	Access for People
4	Access for Goods	Activation	Parking	Parking
5: Low	Activation	Parking	Activation	Activation

Recommendation

That the Board recommend the Director of T&ES install 15-Minute Loading Only parking restrictions—for Monday through Friday from 6:30 AM to 9:30 AM and from 3:30 PM to 6:30 PM for five on-street parking spaces along the south side of the 2400 block of Mandeville Lane.

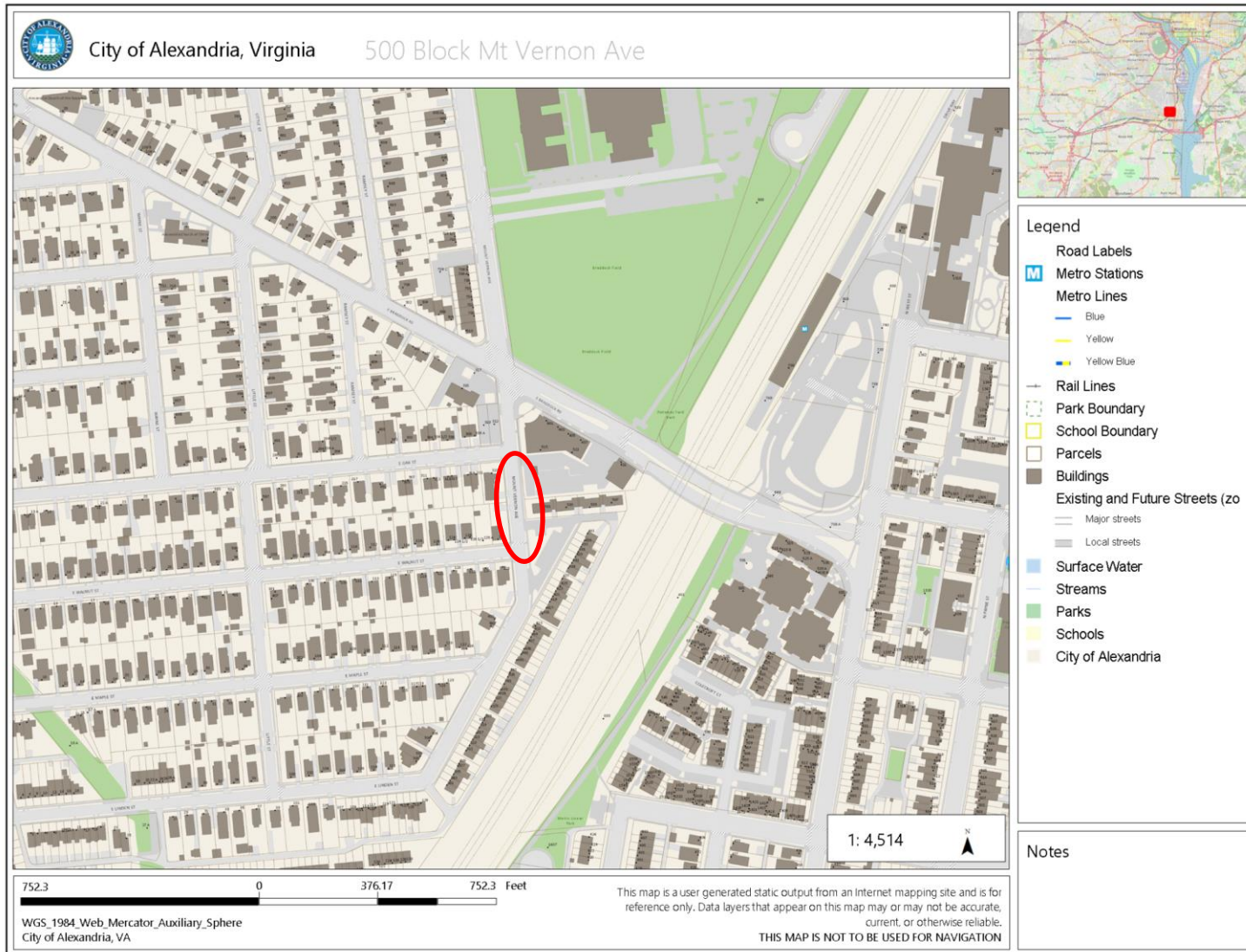
Request to add five on-street parking spaces along the east side of the 500 block of Mount Vernon Avenue

Agenda Item 9

Presenter: Mr. Devilliers



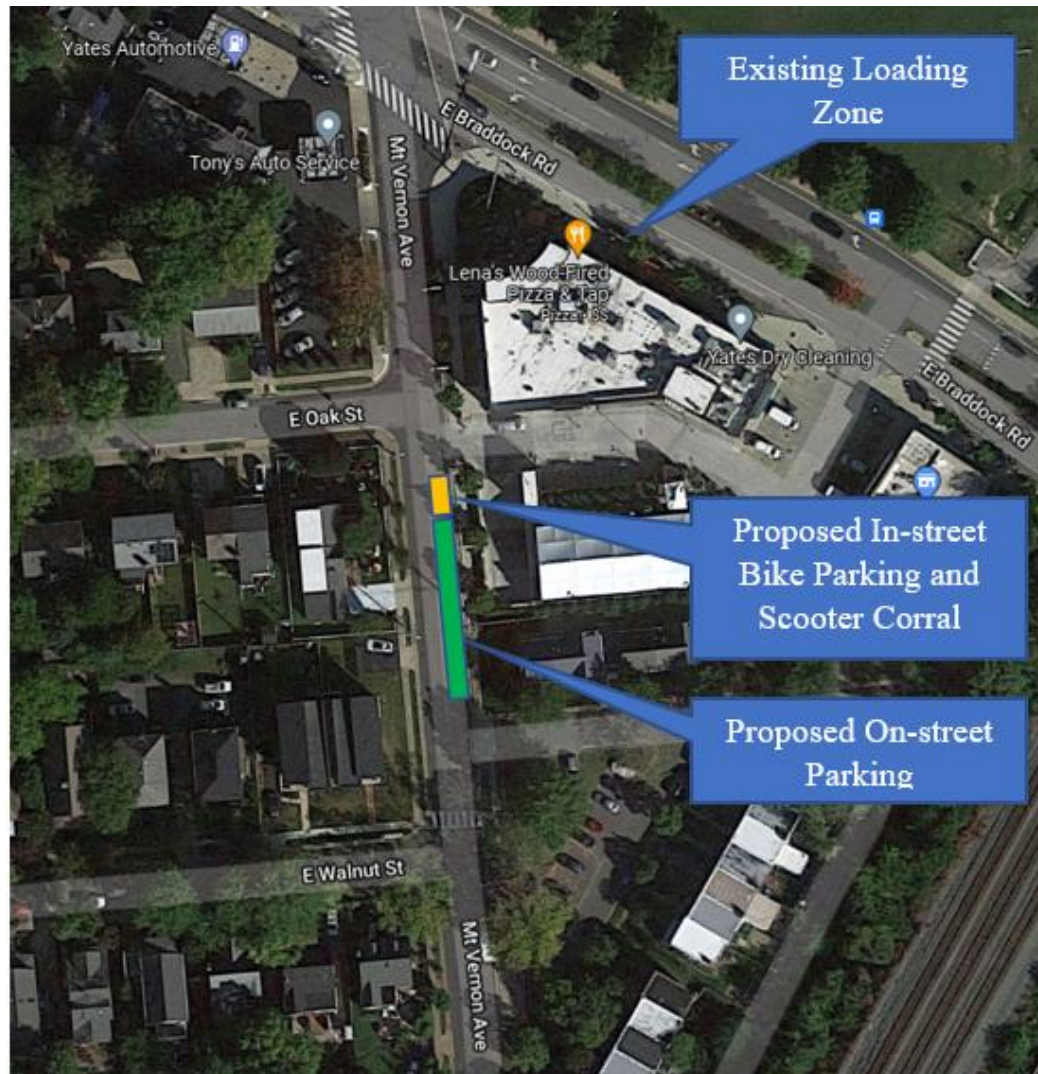
Location



500 b/o Mt. Vernon Ave facing north





Proposed Curb Uses



Curb Space Prioritization Framework



	Residential	Predominantly residential uses, including detached houses, rowhouses, and apartment buildings	<ul style="list-style-type: none"> • Cameron Station Blvd between Duke St and S. Pickett St • Taney Ave between N. Jordan St and Van Dorn St
	Main Streets	Mixed-use neighborhoods with office, residential, and retail uses as well as neighborhood retail corridors	<ul style="list-style-type: none"> • Mt Vernon Ave in Del Ray • King St in Old Town
	Office & Commercial	Areas with predominantly office, retail, and other 'Downtown' functions—often high-density and often including residential towers	<ul style="list-style-type: none"> • Eisenhower Ave between Holland Ln and Telegraph Rd in Carlyle • Duke St between Holland Ln and Dulany St
	Warehouse and Industrial	Areas with mostly industrial and warehouse uses, including redeveloping areas adding retail uses and residential developments	<ul style="list-style-type: none"> • Wheeler Ave west of S. Early St • S. Pickett St west of Van Dorn St

Curb Space Prioritization Framework

Curb Use Categories

	Examples:
City Plan Priorities	Safety improvements, bus lanes, bike lanes, green infrastructure, electric vehicle charging, and other items specifically included in City plans
Access for Goods	Loading zones, deliveries, food pick-up/drop-off
Access for People	Bus stops, pick-up/drop-off, bikeshare stations, scooter corrals
Parking	Metered parking, residential parking, bike parking
Activation	Parklets, in-street dining, public art

Curb Space Prioritization Framework

Priority:	Residential	Main Streets	Office & Commercial	Warehouse & Industrial
1: High	City Plan Priorities			
2	Access for People	Access for People	Access for People	Access for Goods
3	Parking	Access for Goods	Access for Goods	Access for Goods
4	Access for Goods	Activation	Parking	Parking
5: Low	Activation	Parking	Activation	Activation

Provide additional Access for People

Existing conditions satisfy Access for Goods, Activation

Analysis

Curb Use Category:	Analysis:
City Plan Priorities	Reduce traffic speed with narrower travel lanes
Access for People	Add on-street scooter corral
Parking	Add on-street bike parking; add car parking
Access for Goods	Residential: existing uses are adequate Commercial: existing businesses have off-street loading; Existing lay-by on Braddock Road
Activation	n/a

Recommendation

That the Board approve the request to add four on-street parking along the east side of the 500 block of Mount Vernon Avenue

Information Items

Staff & Commissioner Updates

Staff Updates

- Return to In-Person Meetings, Starting April 1, 2022
- April Meeting – April 25, 2022
 - Start Time?
 - Election of Officers
- May Meeting – May 23, 2022

Commissioner Updates