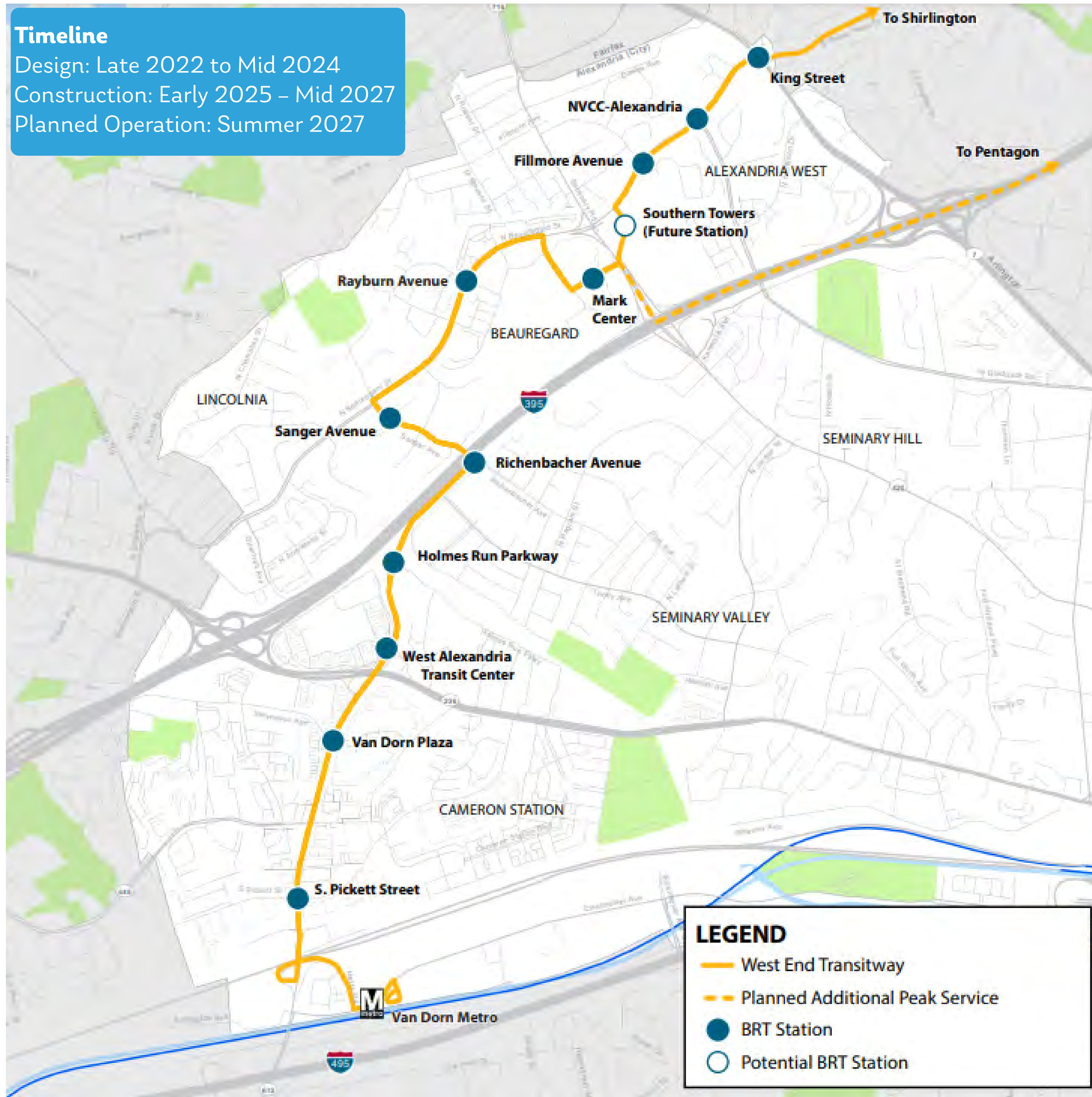


West End Transitway

Timeline
 Design: Late 2022 to Mid 2024
 Construction: Early 2025 – Mid 2027
 Planned Operation: Summer 2027



How did we get here?

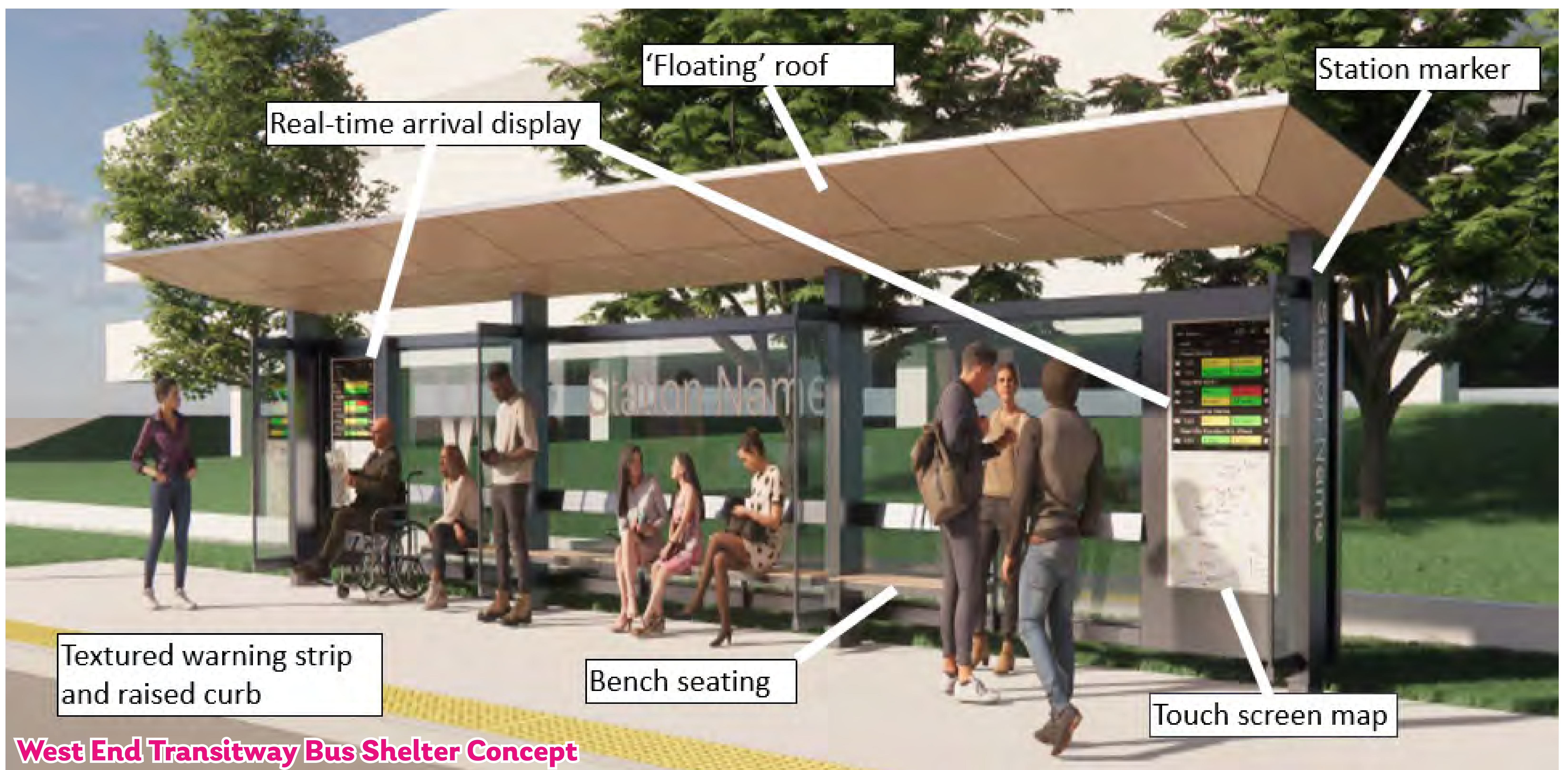
- 2008 Transportation Master Plan identified corridor for BRT \$57M for first phase of improvements
- Dedicated BRT stations with shelters
- Intersection improvements for safety & access
- Buses

Why is this project important?

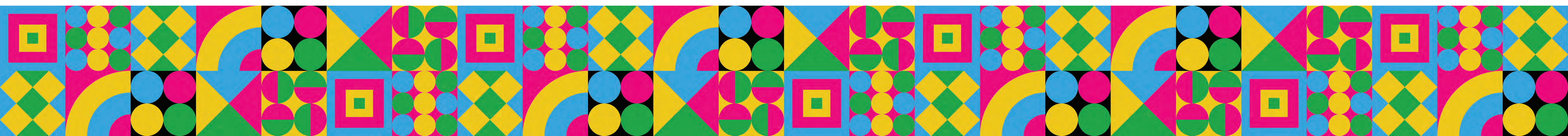
- DASH Line 35 currently carries over 5,300 daily riders (FY23)
- Will help support City land use policies/plans
- Provides travel options with reliable, time-saving transit service

What's Next?

- City seeking input on shelter amenities & priorities



West End Transitway Bus Shelter Concept



Seminary Road West of Beauregard Street

Safety and Issues



Limited opportunities for signalized crossings



Long and uncomfortable crossings



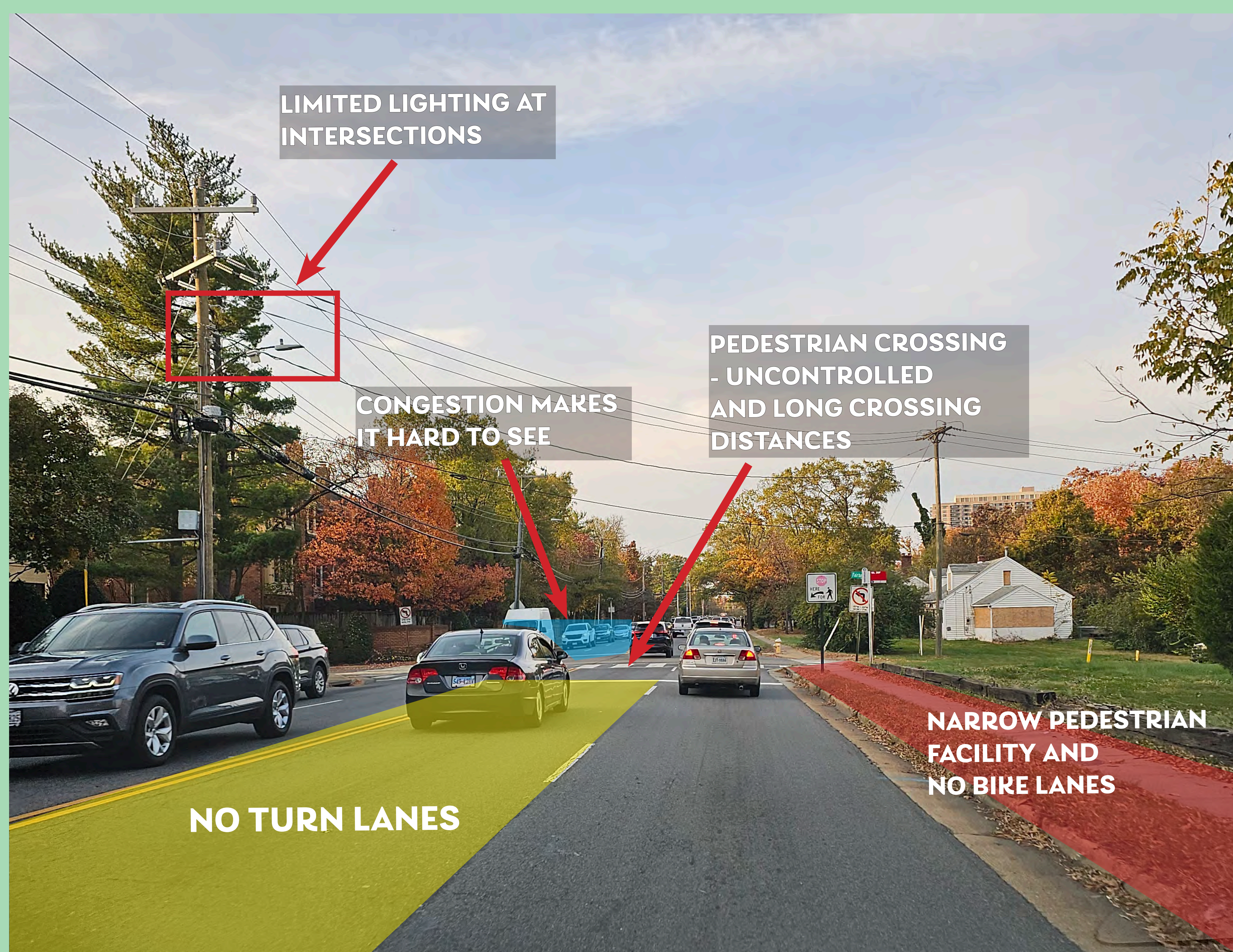
Speeding, especially during off peak hours



No separate turn lanes



High vehicle volumes during peak hours

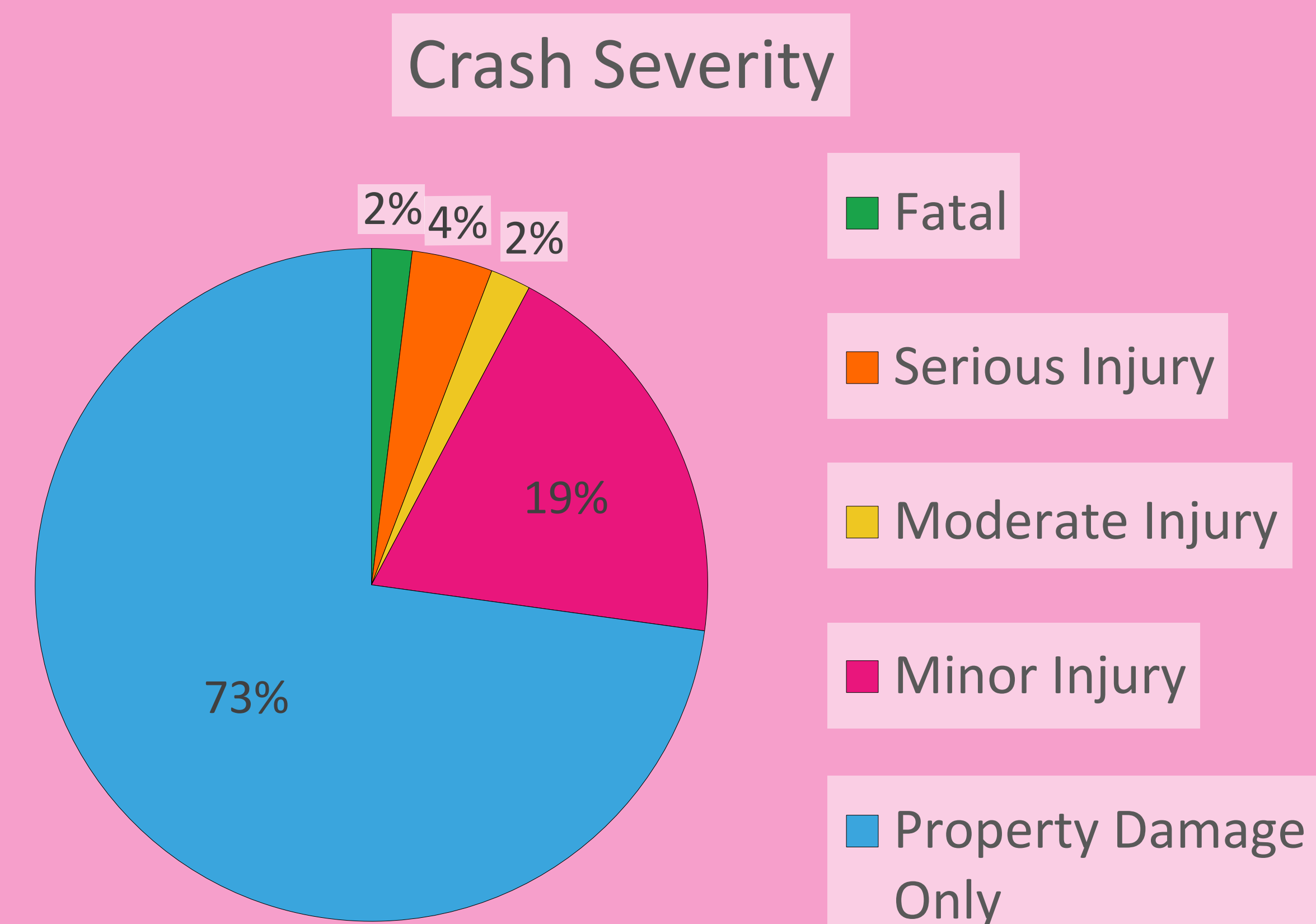


Higher Risk of Severe Crashes:

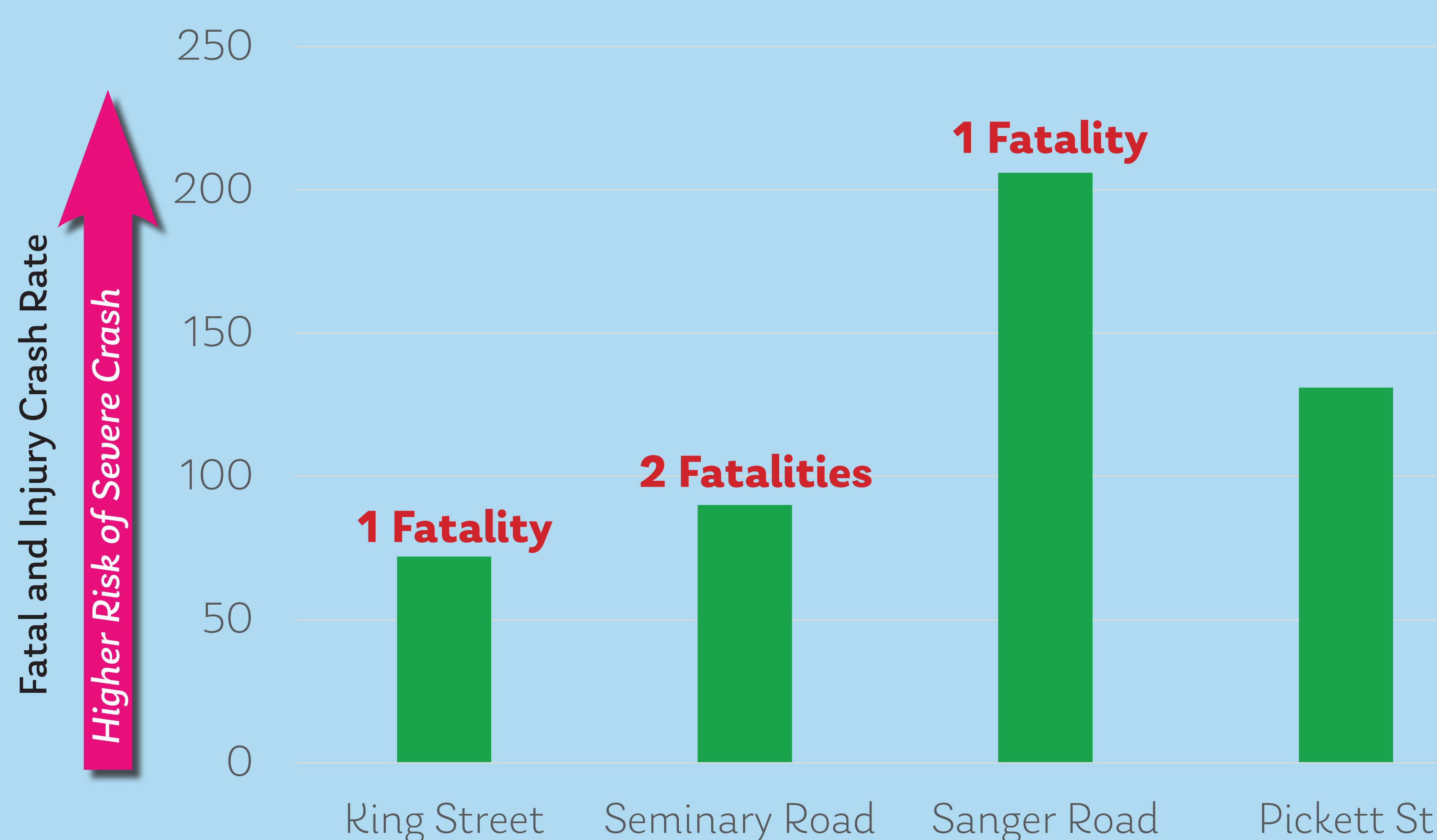
- People walking & biking
- Turning vehicles

Common Causes for Severe Crashes:

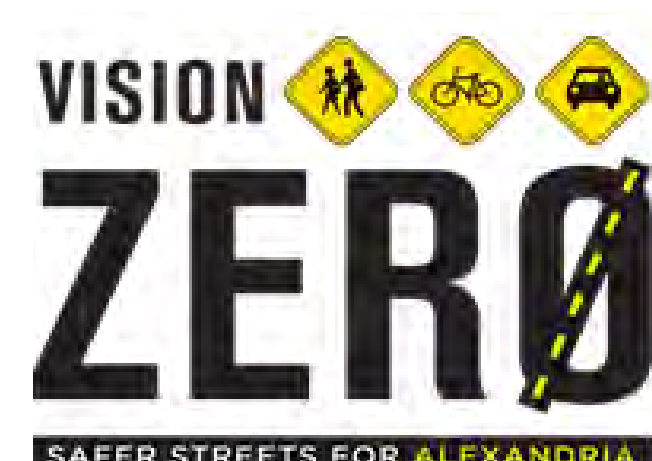
- Speeding
- Turning vehicles (lack of turn lane)
- Visibility (low light or weather)



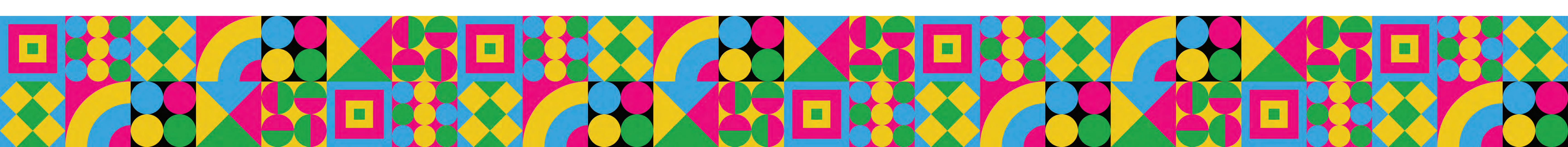
Similar Undivided Four-Lane Roadways Fatality Plus Injury Crashes per 100 Million Miles Traveled



Source: VDOT 2018-2023 Crashes and 2022/2023 Volume Data



Vision Zero is a City initiative that is founded on the belief that traffic deaths and severe injuries are unacceptable.



Seminary Road and Beauregard Street Intersection

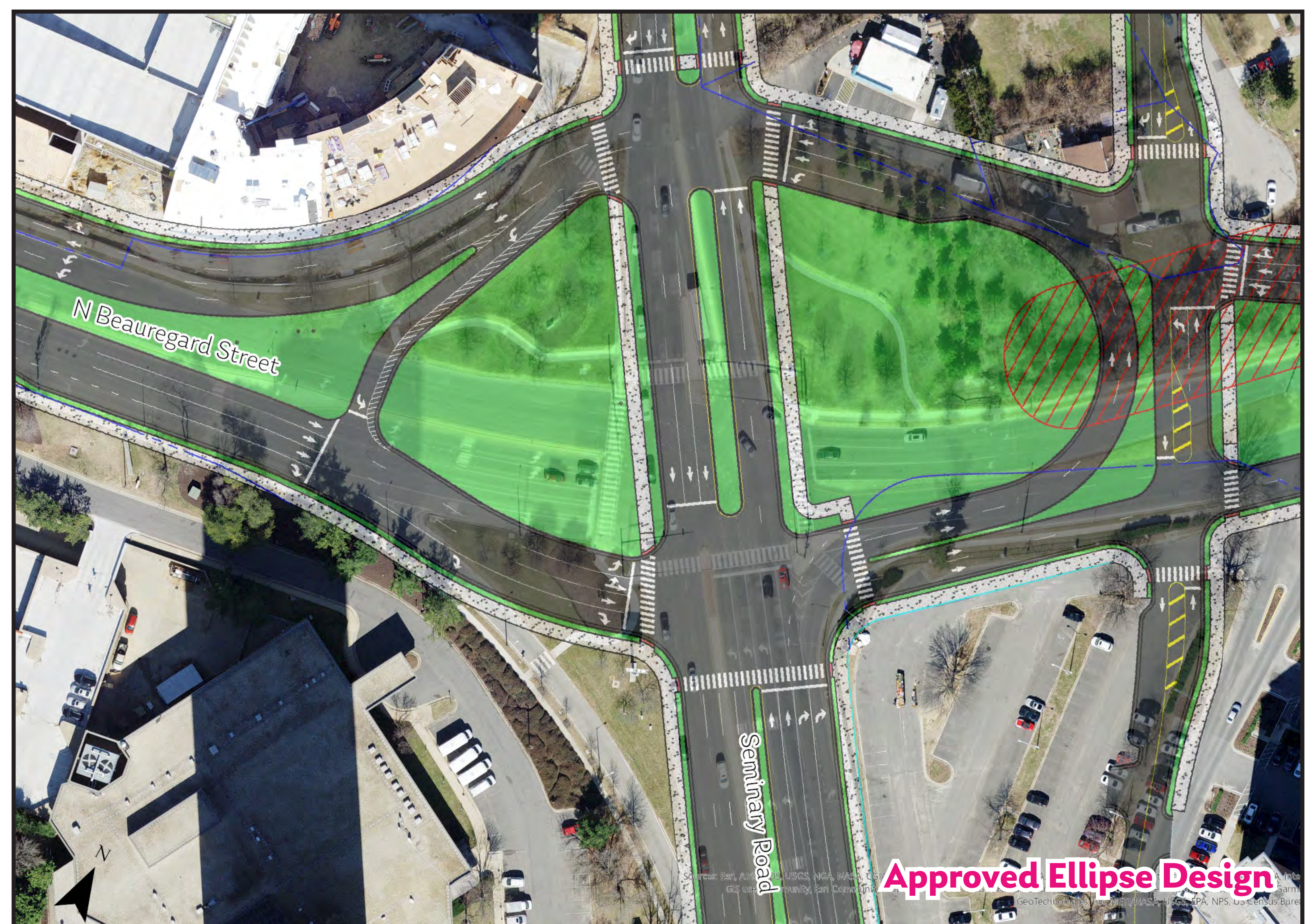
Scope: Re-evaluate the approved “Ellipse” design for the intersection of Seminary Road and Beauregard Street to compare against current design practices.

Problems:

- Large intersection and uncomfortable for people walking, biking and driving
- High number of angle crashes
- Weaving between I-395 and Beauregard Street

Goals:

- Validate original concerns and problems
- Maintain or improve operations
- Improve safety for all users
- Develop attainable solution



- Reduce size of intersection
- Relocate and control major movements
- Phased and attainable solution
- Refocus on larger picture – Re-imagine I-395 and Seminary Road
- Accommodate and maintain existing traffic operations

