



Mount Vernon Trail

Improvements at Pendleton St and Canal Center Plaza

Alexandria Waterfront Commission - September 19, 2023

MVT Improvements

Project Purpose

This project will make it easier and safer for cyclists and pedestrians to use the Mount Vernon Trail at intersections between Pendleton Street and Canal Center Plaza.

Using pavement markings, signs, and other treatments this project will clarify how cyclists, pedestrians, and motorists use each intersection.



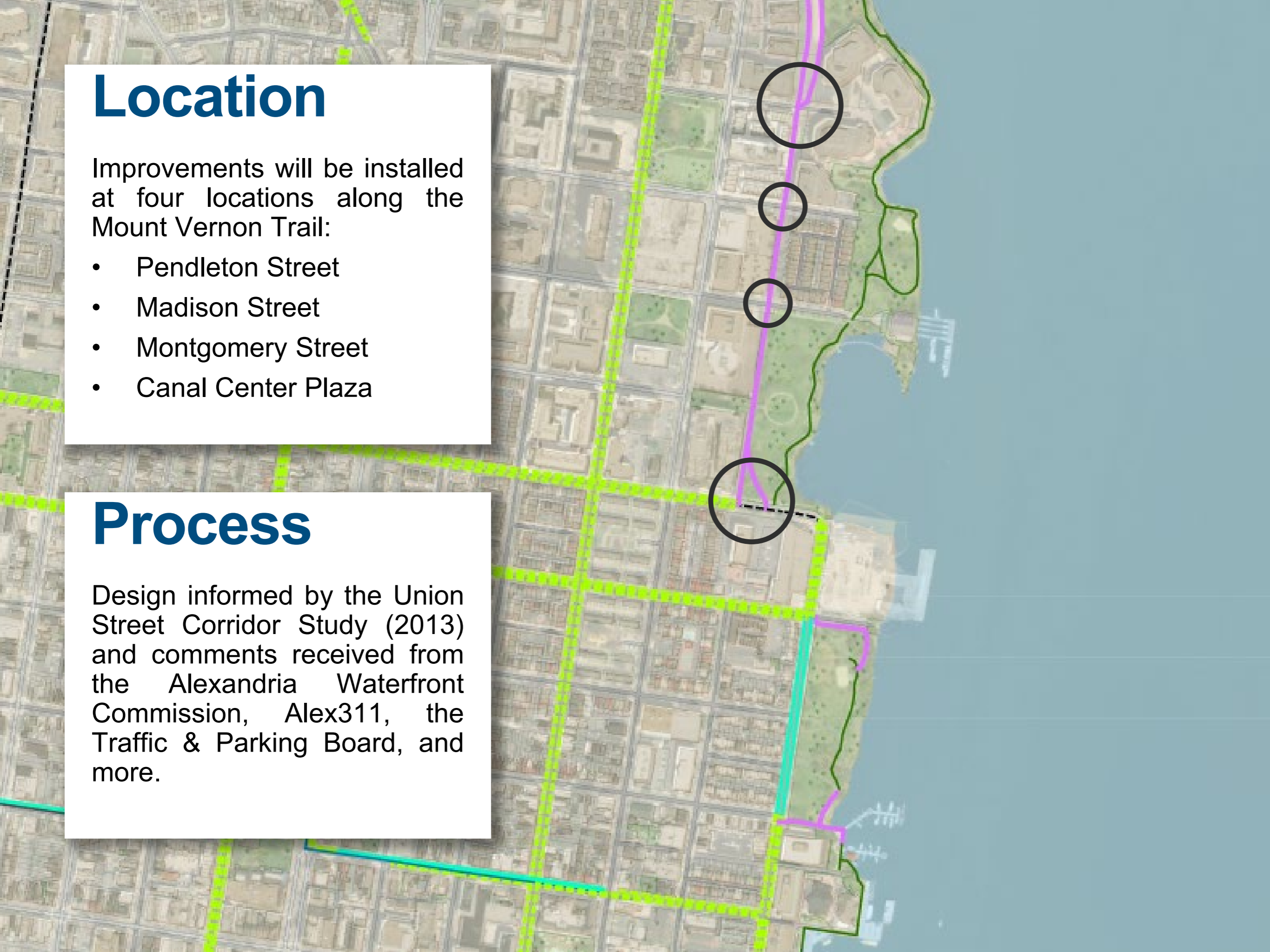
Location

Improvements will be installed at four locations along the Mount Vernon Trail:

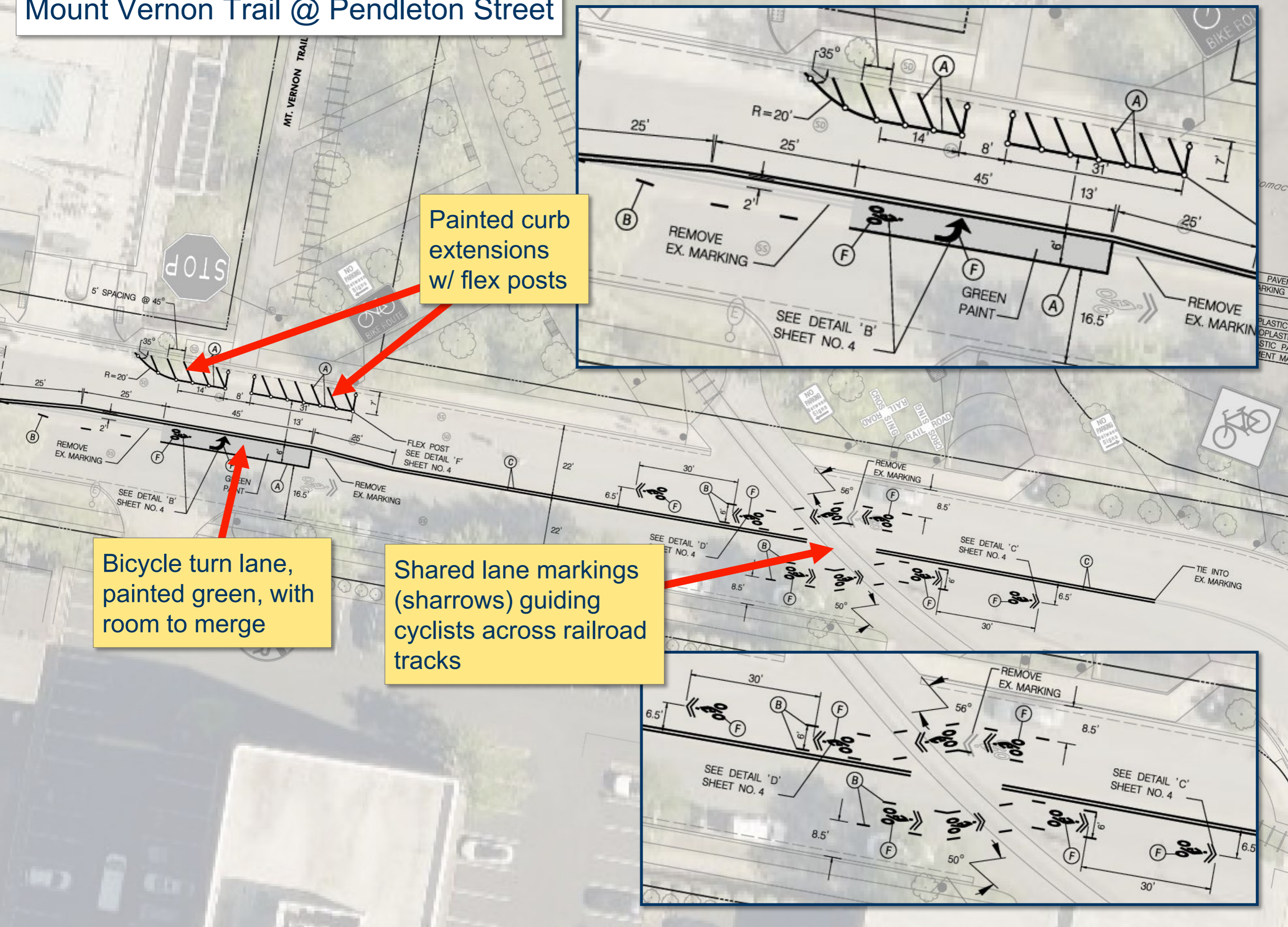
- Pendleton Street
- Madison Street
- Montgomery Street
- Canal Center Plaza

Process

Design informed by the Union Street Corridor Study (2013) and comments received from the Alexandria Waterfront Commission, Alex311, the Traffic & Parking Board, and more.



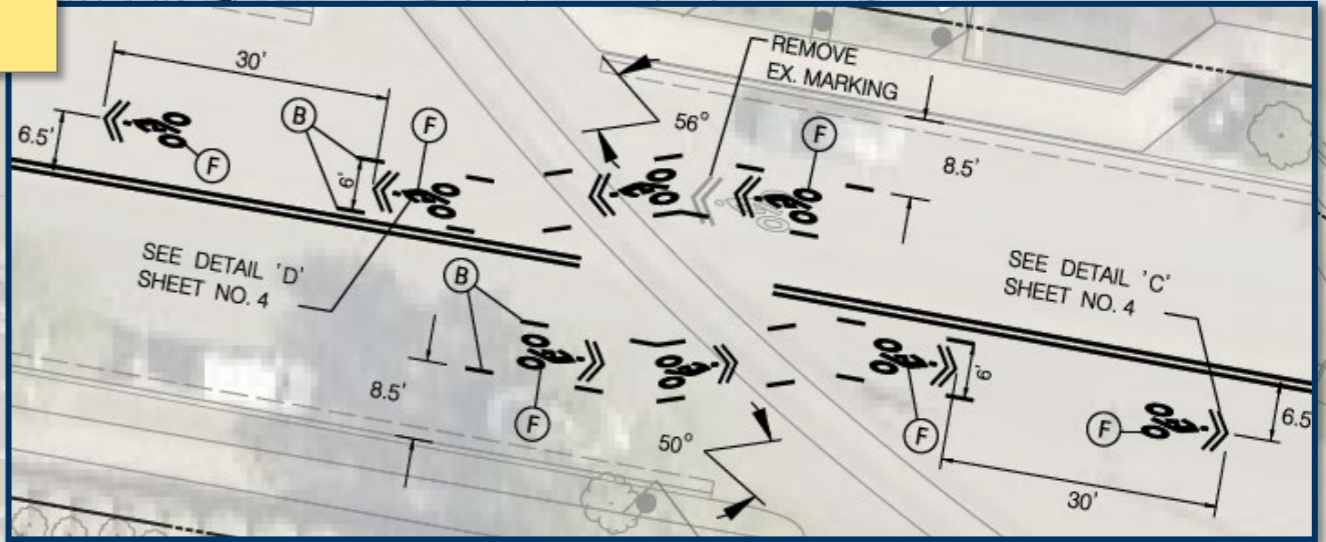
Mount Vernon Trail @ Pendleton Street



Painted curb extensions w/ flex posts

Bicycle turn lane, painted green, with room to merge

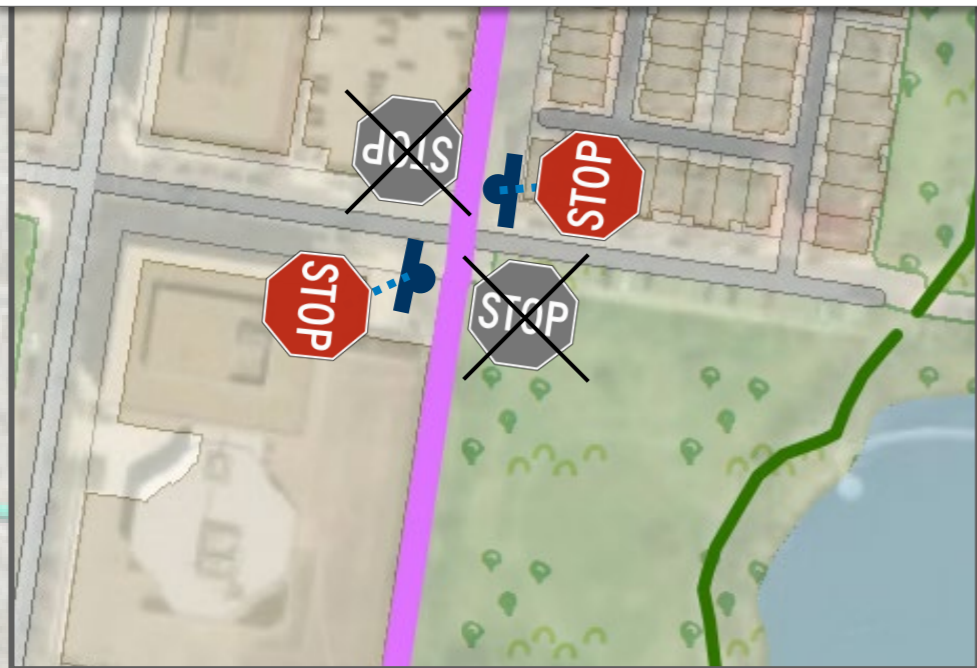
Shared lane markings (sharrows) guiding cyclists across railroad tracks



Mount Vernon Trail @ Montgomery St



Mount Vernon Trail @ Madison St



Reverse STOP sign direction. T&PB approved stopping vehicle traffic at Montgomery St and Madison St and allowing trail users to cross without stopping.

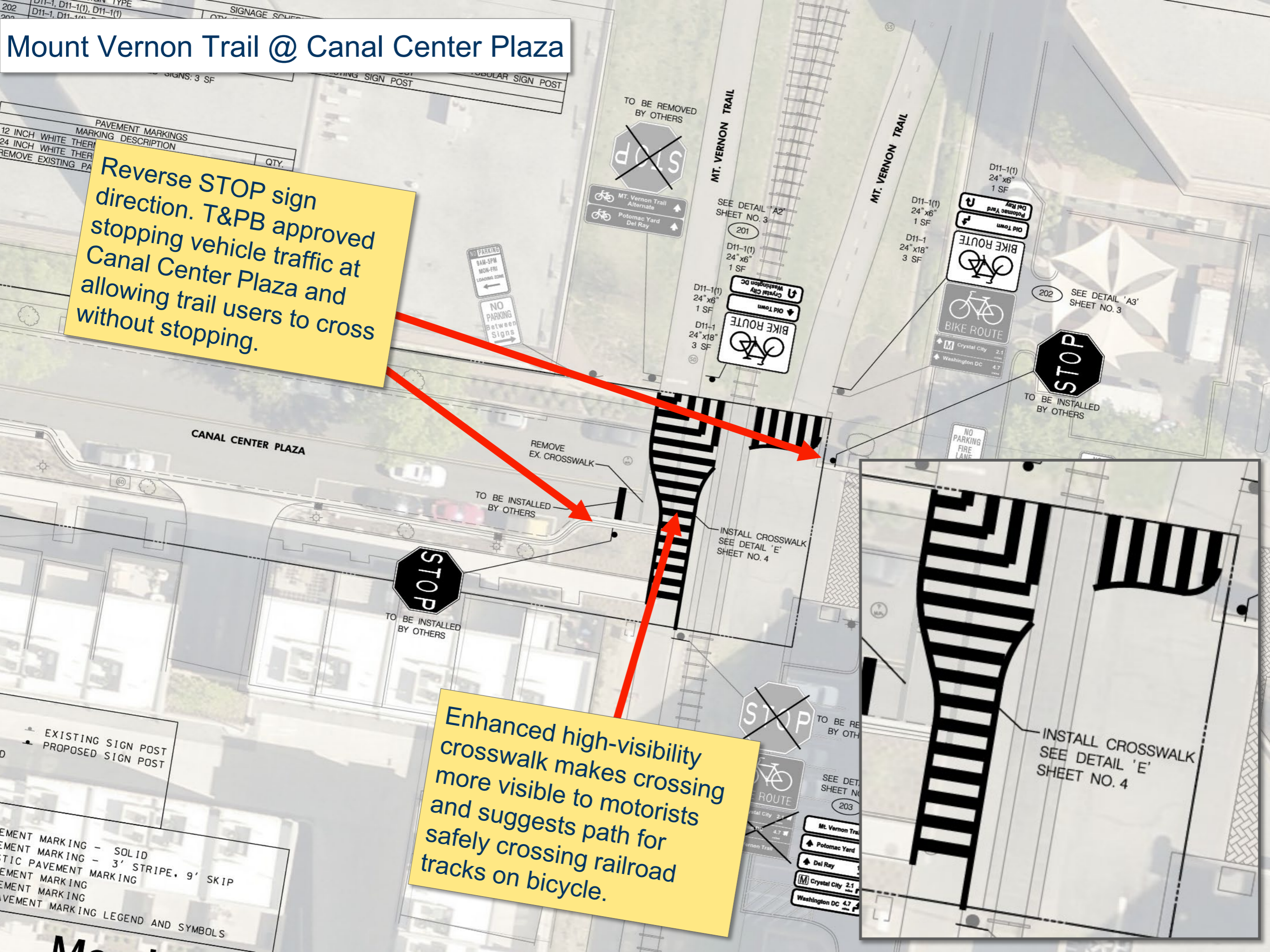
Mount Vernon Trail @ Canal Center Plaza

Reverse STOP sign direction. T&PB approved stopping vehicle traffic at Canal Center Plaza and allowing trail users to cross without stopping.

Enhanced high-visibility crosswalk makes crossing more visible to motorists and suggests path for safely crossing railroad tracks on bicycle.

MARKING DESCRIPTION	QTY.
12 INCH WHITE THERM...	
24 INCH WHITE THERM...	
REMOVE EXISTING PA...	

PAVEMENT MARKING	LEGEND AND SYMBOLS
EXISTING SIGN POST	
PROPOSED SIGN POST	
SOLID	
3' STRIPE, 9' SKIP	

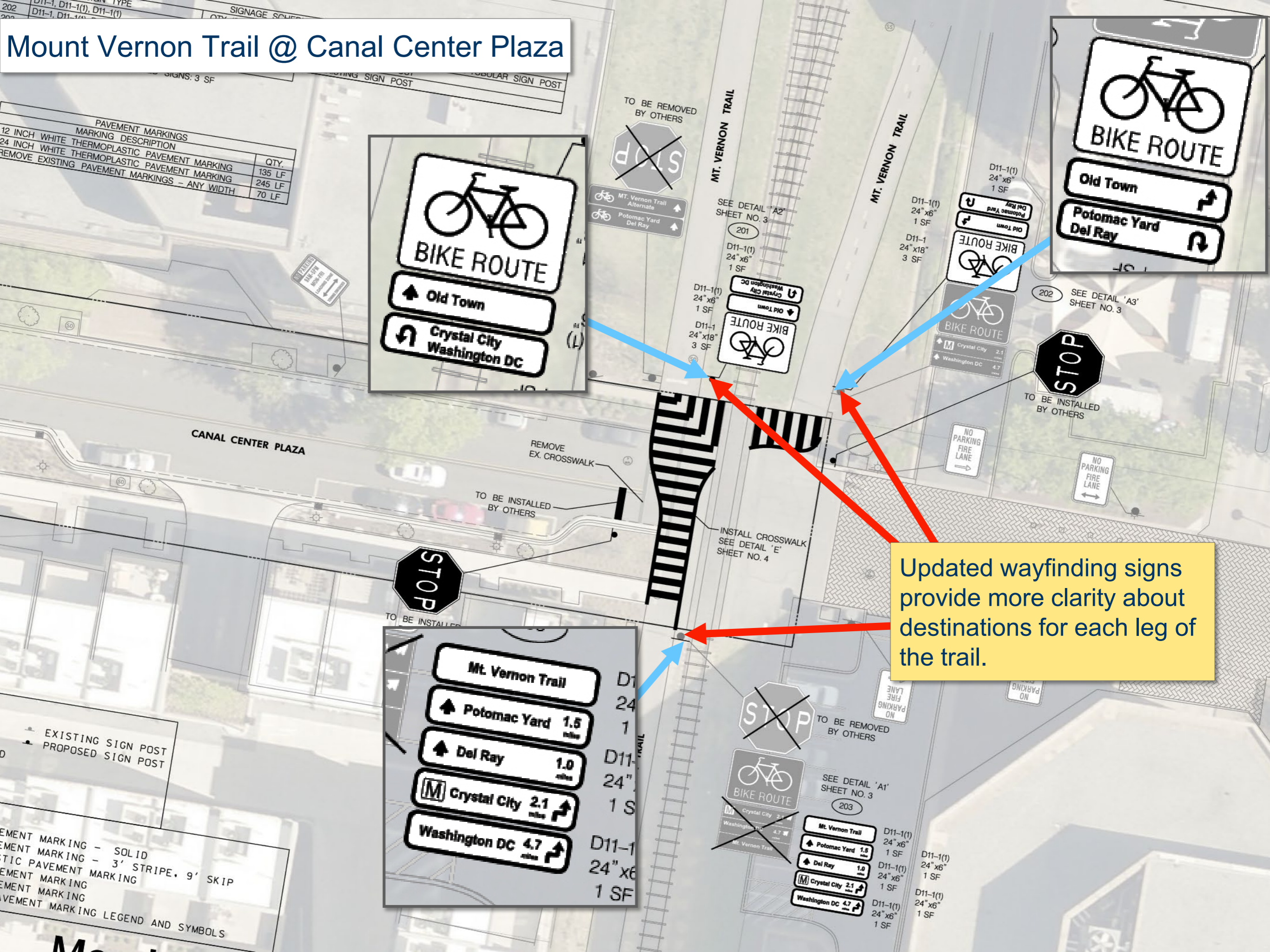


Mount Vernon Trail @ Canal Center Plaza

PAVEMENT MARKINGS	MARKING DESCRIPTION	QTY.
12 INCH WHITE THERMOPLASTIC PAVEMENT MARKING		135 LF
24 INCH WHITE THERMOPLASTIC PAVEMENT MARKING		245 LF
REMOVE EXISTING PAVEMENT MARKINGS - ANY WIDTH		70 LF

Updated wayfinding signs provide more clarity about destinations for each leg of the trail.

EXISTING SIGN POST	PROPOSED SIGN POST
PAVEMENT MARKING - SOLID	
PAVEMENT MARKING - 3' STRIPE, 9' SKIP	
PAVEMENT MARKING	
PAVEMENT MARKING	
PAVEMENT MARKING	
PAVEMENT MARKING	
PAVEMENT MARKING	





Next Step

Implementation

Implementation will begin along the Mount Vernon Trail at Pendleton Street and Canal Center Plaza in 2023.

Changes to stop signs at Montgomery, Madison, and Canal Center Plaza are expected to be completed this fall.

Bryan Hayes
Complete Streets Coordinator
bryan.hayes@alexandriava.gov