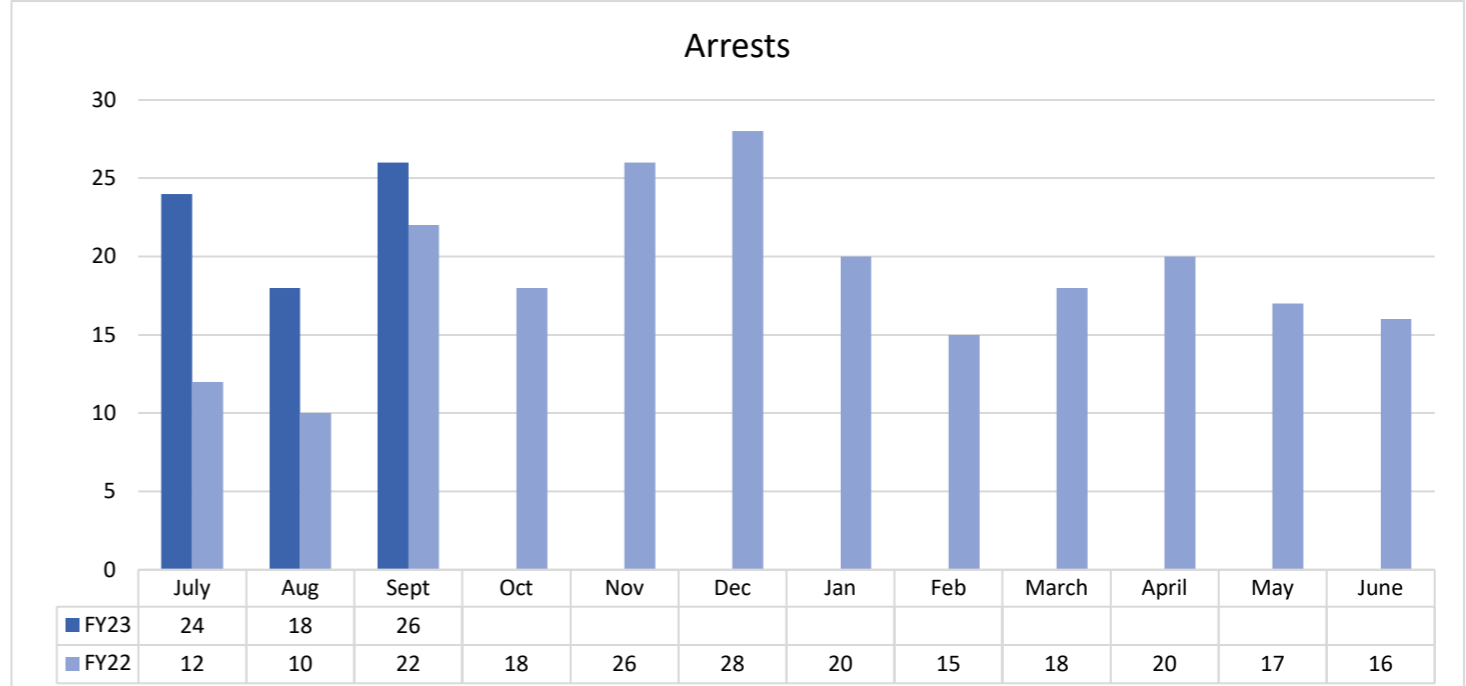
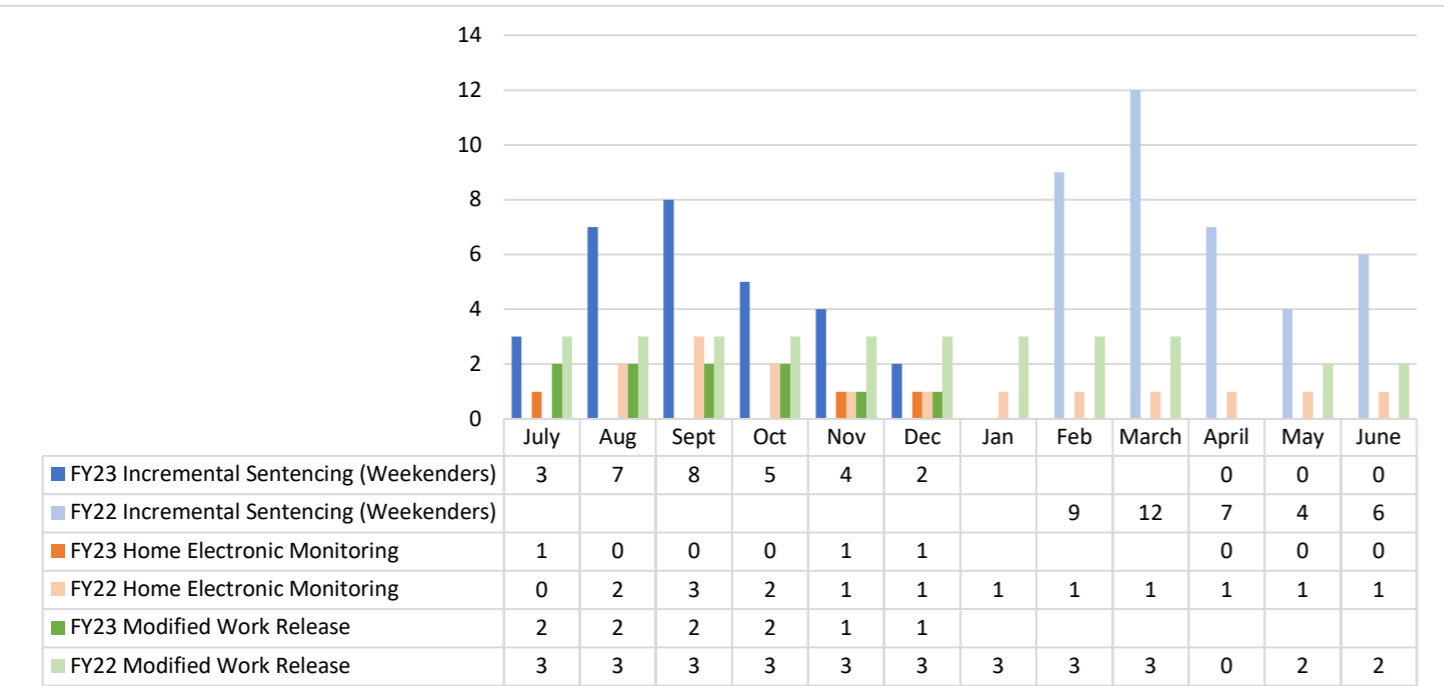
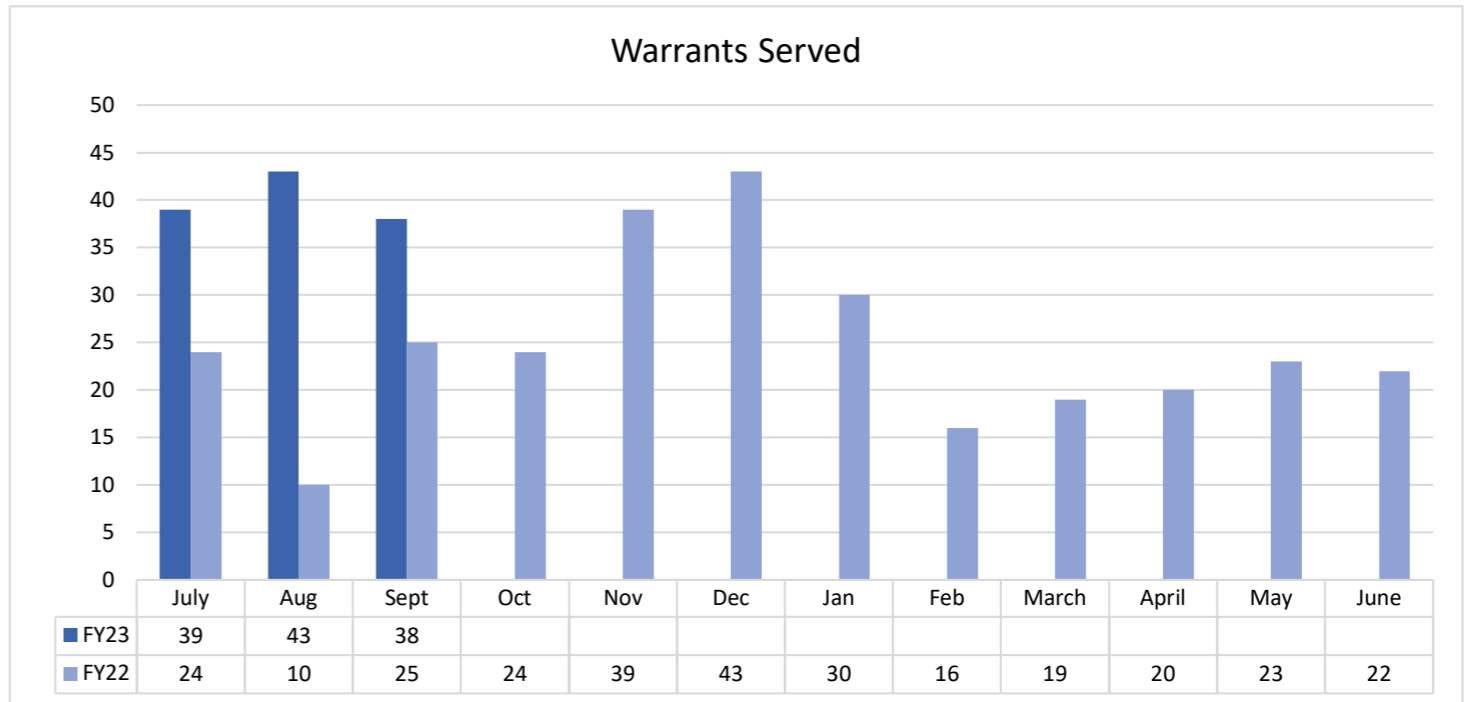
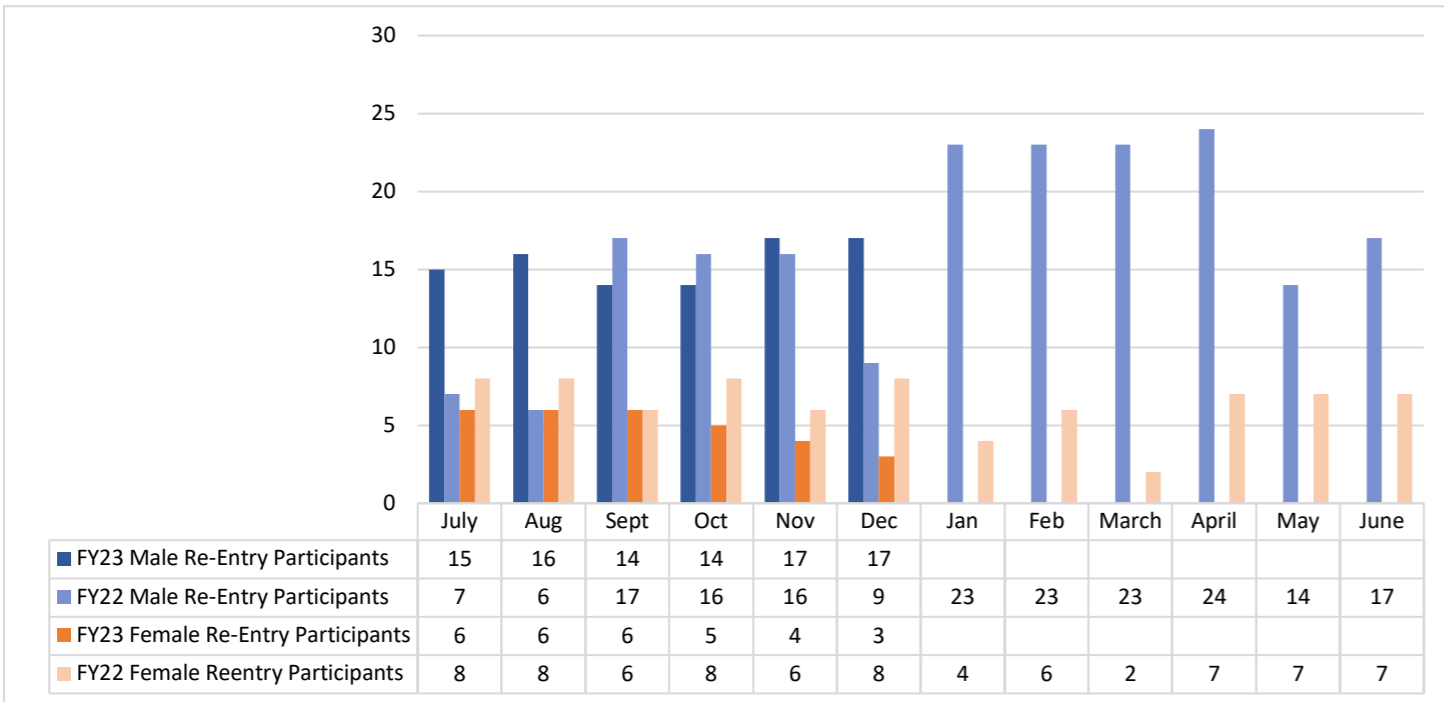


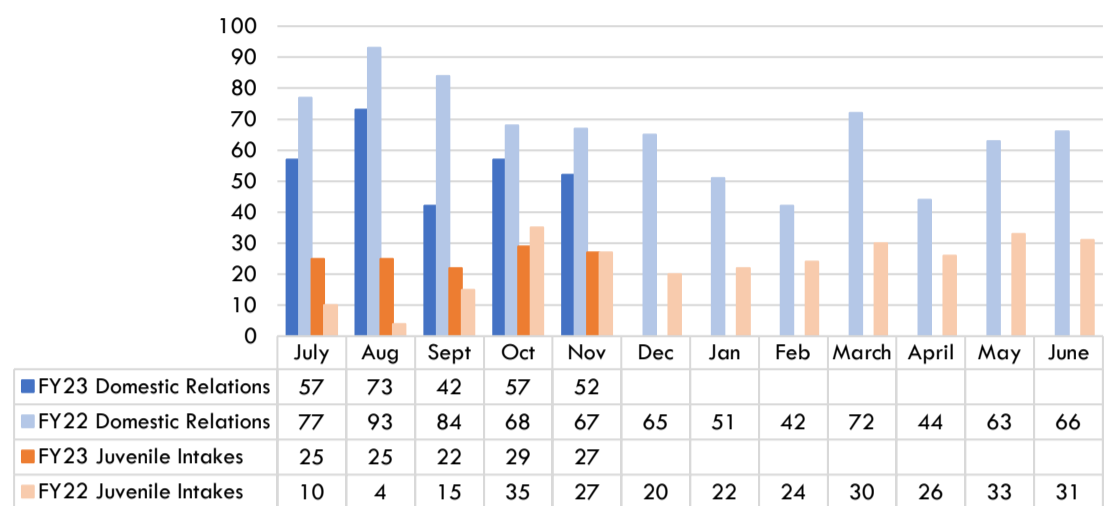
Alexandria Sheriff's Office



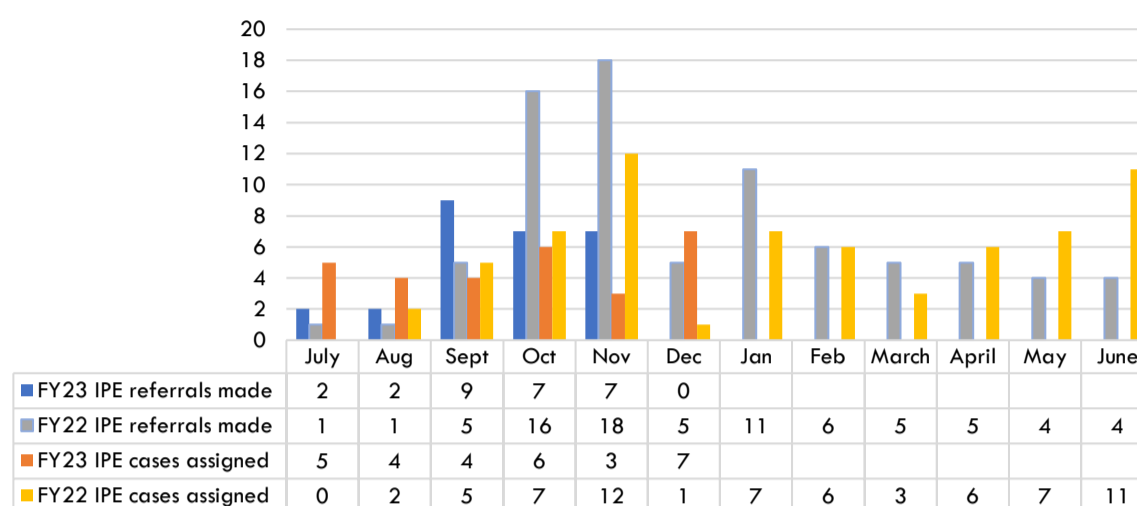
Notes/Comments: Incremental sentencing resumed in February; HEM data includes court ordered and hospital

Court Service Unit

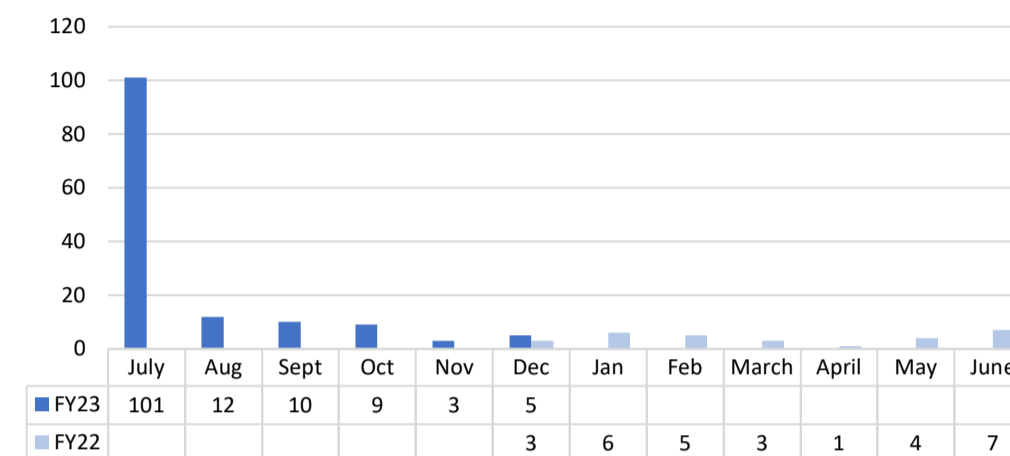
Intakes



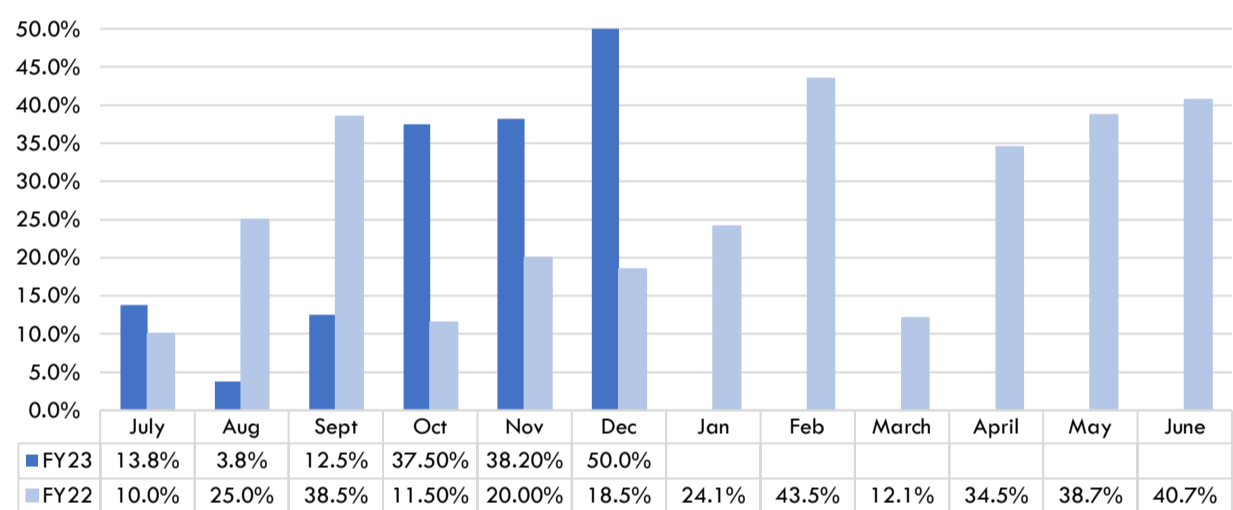
Intervention, Prevention, and Education (IPE) Program



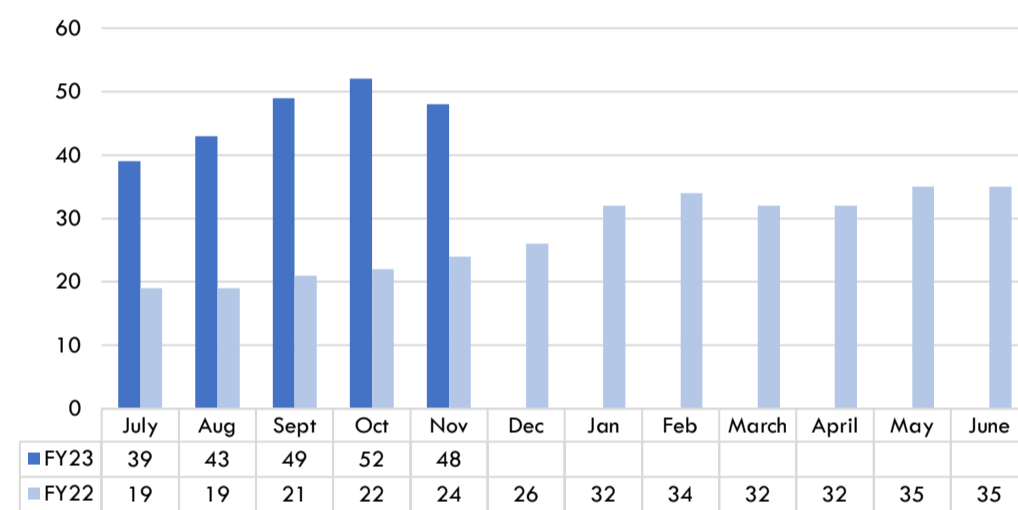
of Adults referred to become a mentor through the Alexandria Mentorship Partnership (AMP)



Intakes Diverted



Probation Average Daily Population

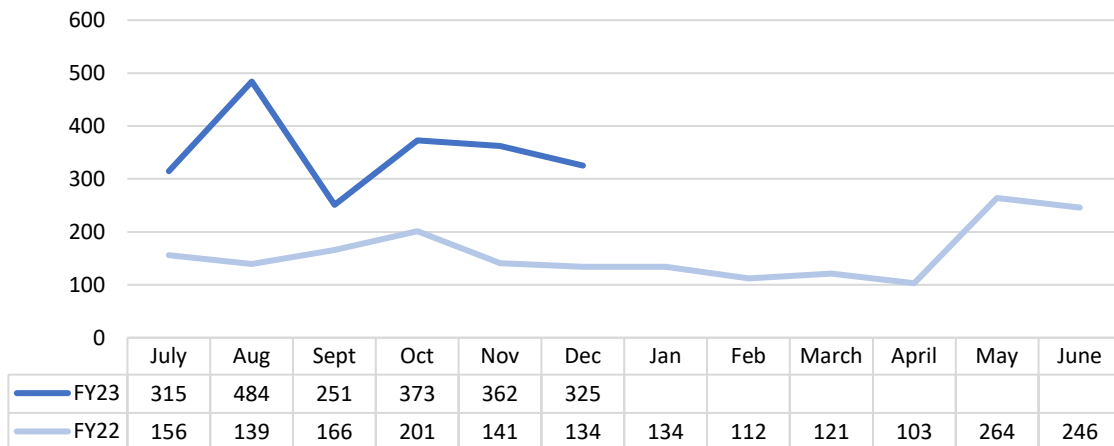


Notes/Comments:

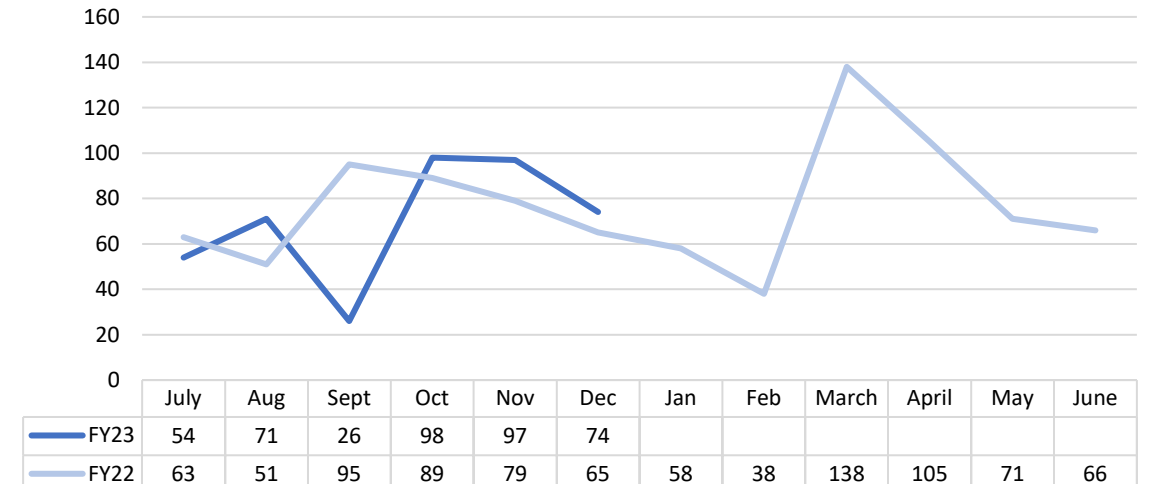
- While the Alexandria Mentorship Partnership (AMP) began in 2006, tracking of referrals began in December 2021. The July 2022 number reflects the high number of referrals made at the AMP outreach event and online survey.

Code Enforcement

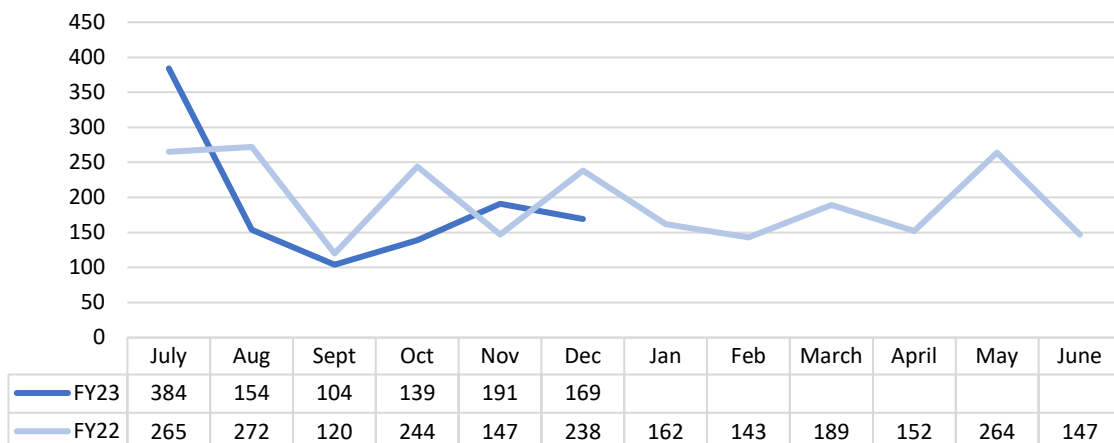
Number of property maintenance and nuisance code cases initiated



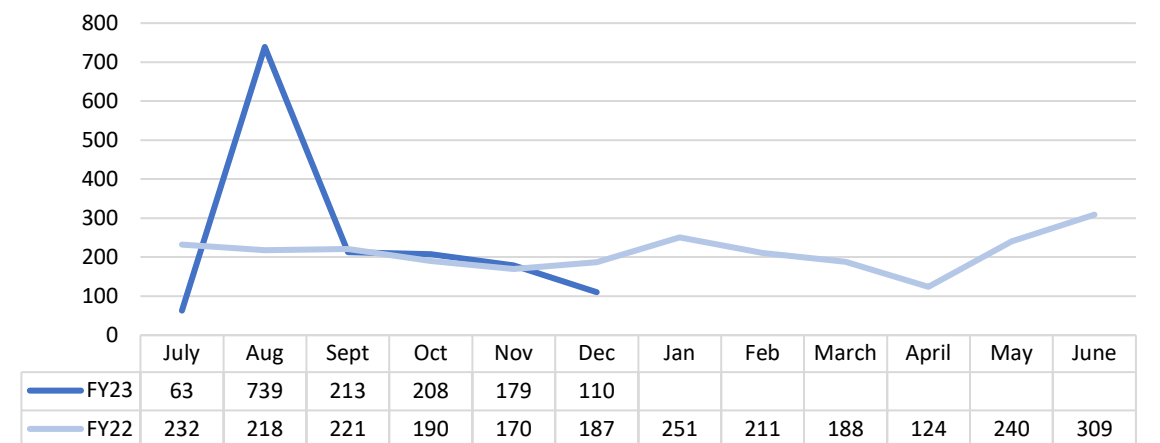
Number of Property Maintenance code violations



Number of proactive inspection activities including surveys, block inspections, notices and customer contact



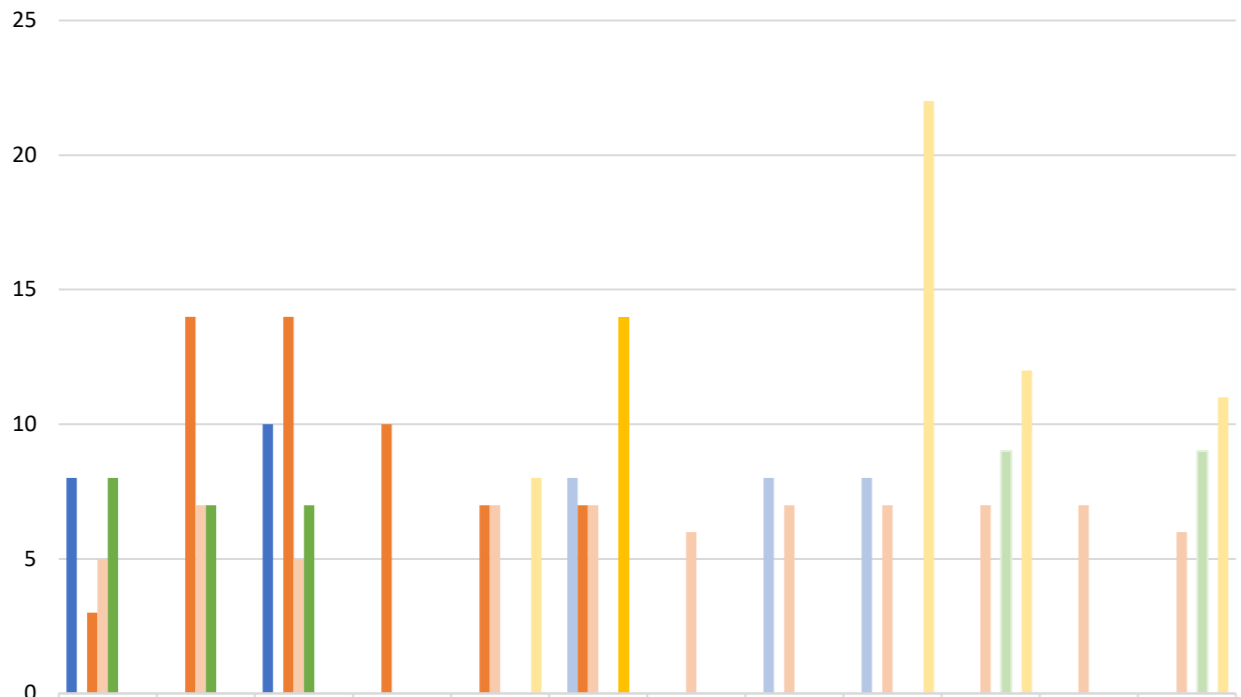
Number of complaint and nuisance inspection activities conducted, including notices, orders and customer contact



Notes/Comments: Most code cites continue to be from trash, deferred maintenance violations and rodent activity on private property; Customer requested 311 complaints increased for property code violations and solid waste on private property.

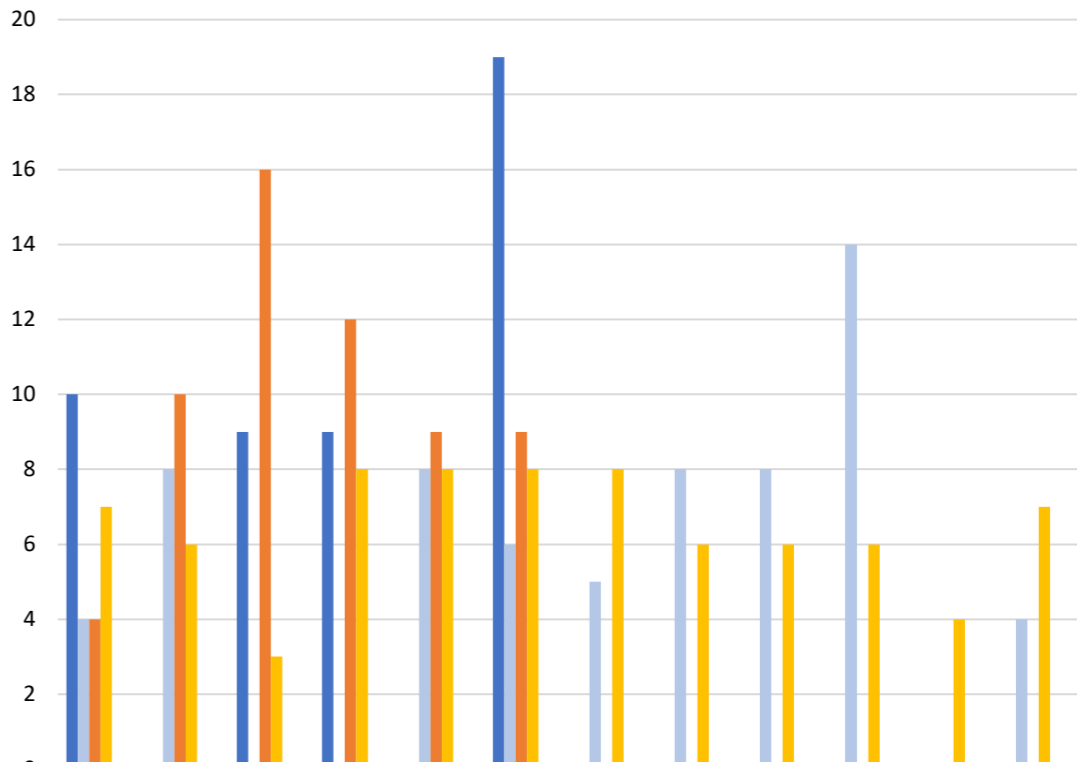
Alexandria Sheriff's Office, Program Participation

Participants in Programs



	July	Aug	Sept	Oct	Nov	Dec	Jan	Feb	March	April	May	June
FY23 OSHA 10	8	0	10	0	0	0	0	8	8	0	0	0
FY22 OSHA 10	0	0	0	0	0	8	0	8	8	0	0	0
FY23 GED	3	14	14	10	7	7	6	7	7	7	7	6
FY22 GED	5	7	5	0	7	7	6	7	7	7	7	6
FY23 Serve Safe Training	8	7	7	0	0	0	0	0	0	9	0	9
FY22 Serve Safe Training	0	0	0	0	0	0	0	0	0	9	0	9
FY23 Flaggers Training	0	0	0	0	0	14	0	0	0	0	0	0
FY22 Flaggers Training	0	0	0	0	8	0	0	0	22	12	0	11

Participants in Programs

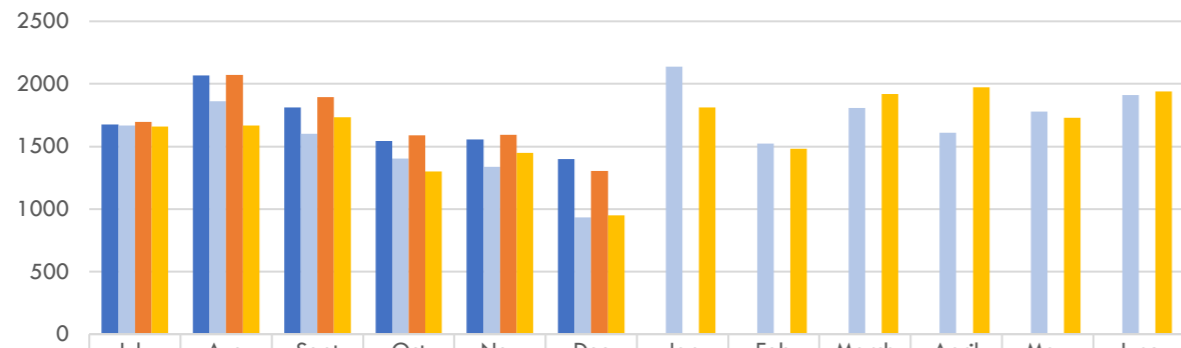


	July	Aug	Sept	Oct	Nov	Dec	Jan	Feb	March	April	May	June
FY23 Narcan Training	10	0	9	9	0	19	0	0	0	0	0	0
FY22 Narcan Training	4	8	0	0	8	6	5	8	8	14	0	4
FY23 English as a Second Language (ESL)	4	10	16	12	9	9	0	0	0	0	0	0
FY22 English as a Second Language (ESL)	7	6	3	8	8	8	8	6	6	6	4	7
FY23 Thinking for Change	0	0	0	0	0	0	0	0	0	0	0	0
FY22 Thinking for Change	0	0	0	0	0	0	0	0	0	0	0	0

Notes/Comments:

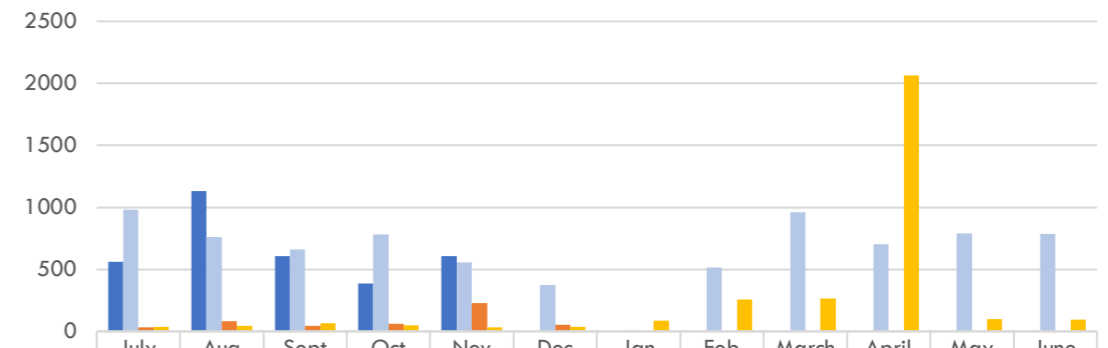
T&ES Operations

Service Requests



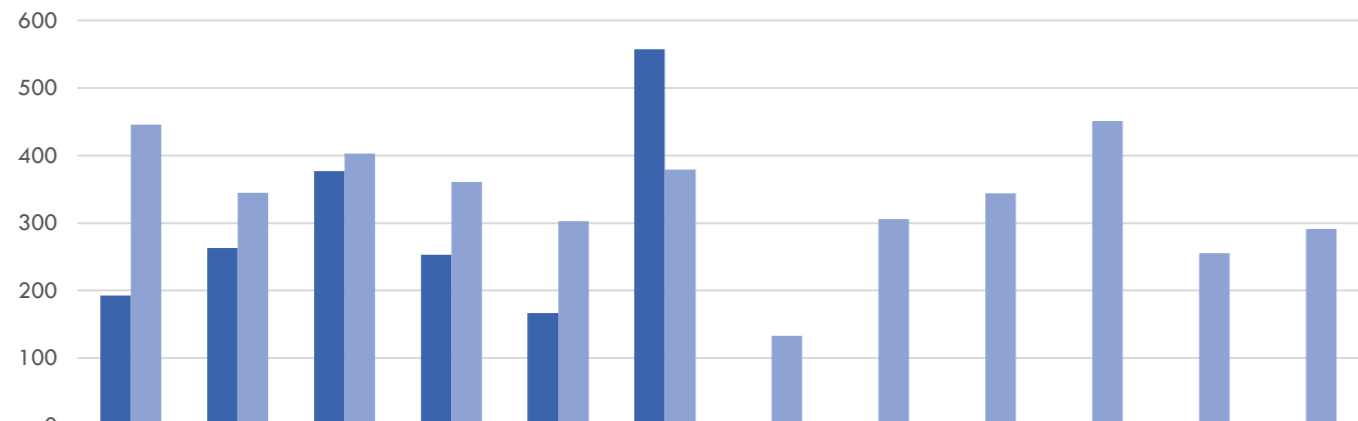
	July	Aug	Sept	Oct	Nov	Dec	Jan	Feb	March	April	May	June
FY23 Requests Received	1677	2066	1812	1542	1554	1401						
FY22 Requests Received	1668	1862	1602	1404	1338	932	2139	1524	1807	1609	1777	1910
FY23 Requests Closed	1695	2071	1894	1591	1592	1304						
FY22 Requests Closed	1659	1666	1734	1301	1447	948	1810	1480	1921	1974	1728	1938

Sidewalk and Pothole Repairs



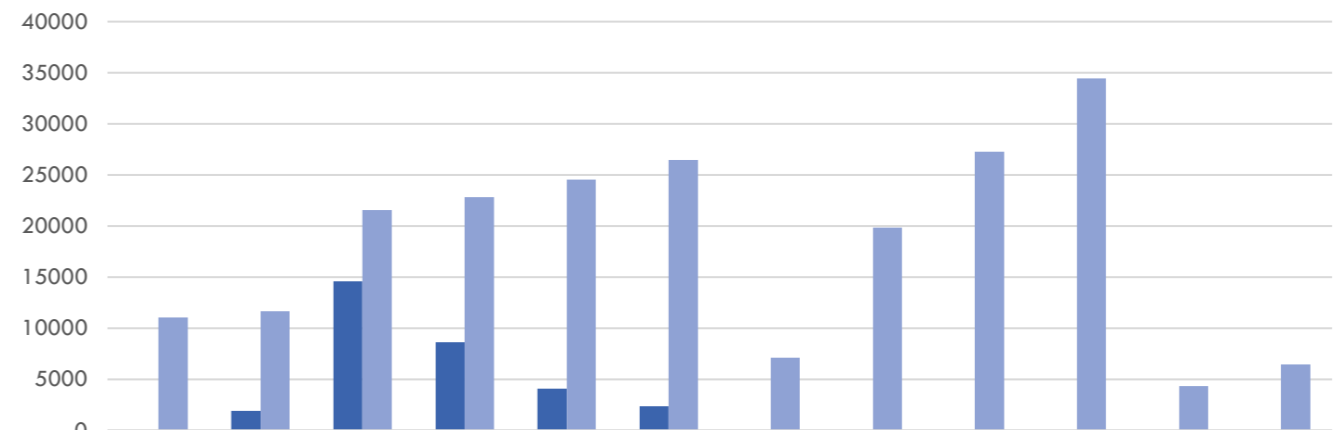
	July	Aug	Sept	Oct	Nov	Dec	Jan	Feb	March	April	May	June
FY23 Brick Sidewalk Repairs	561	1131	608	388	606							
FY22 Brick Sidewalk Repairs	981	763	661	783	555	374	4	515	961	703	790	787
FY23 Pothole Repairs	32	83	45	61	230	54						
FY22 Pothole Repairs	38	46	64	49	34	37	88	257	264	2062	98	96

Work Orders



	July	Aug	Sept	Oct	Nov	Dec	Jan	Feb	March	April	May	June
FY23	193	263	377	253	167	557						
FY22	446	345	403	361	303	379	133	306	344	451	255	291

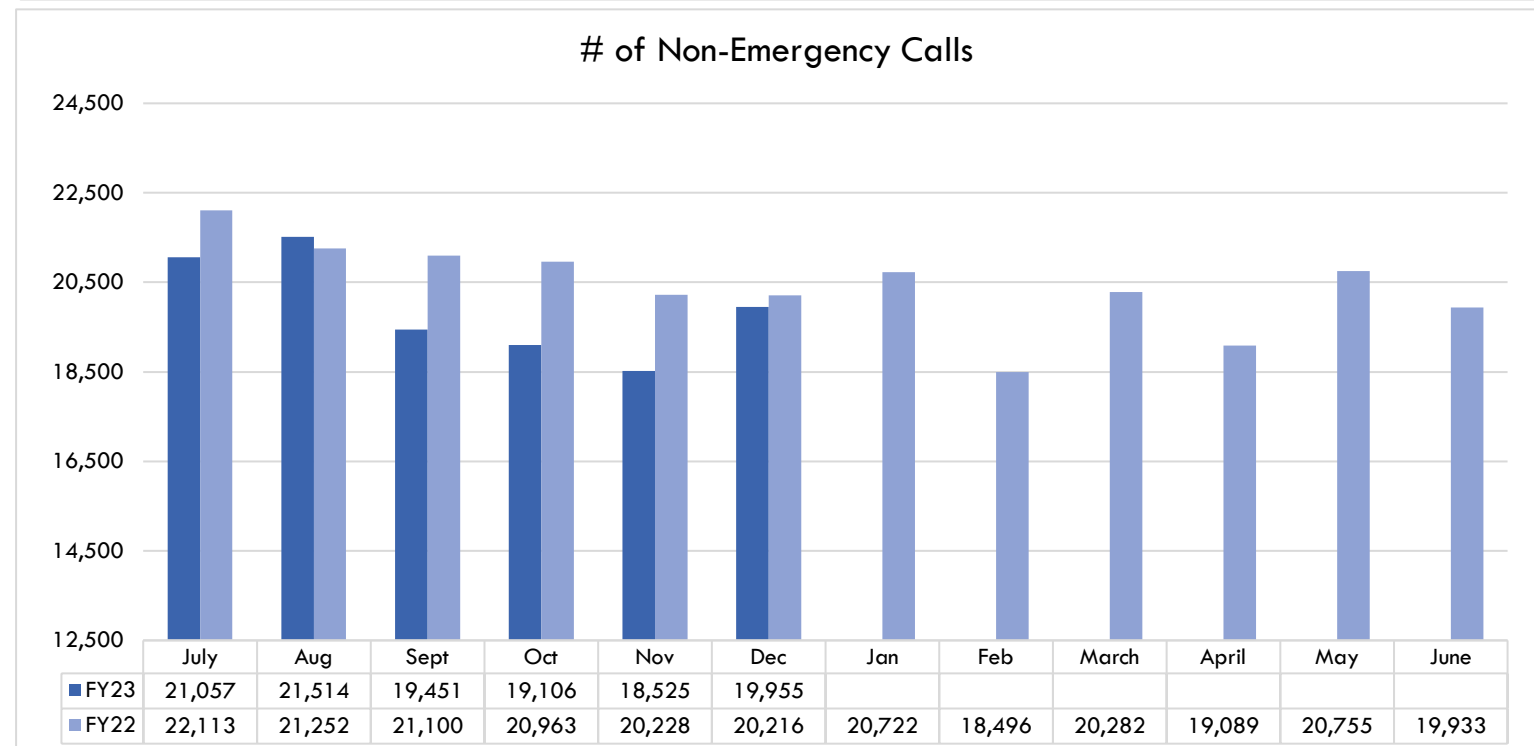
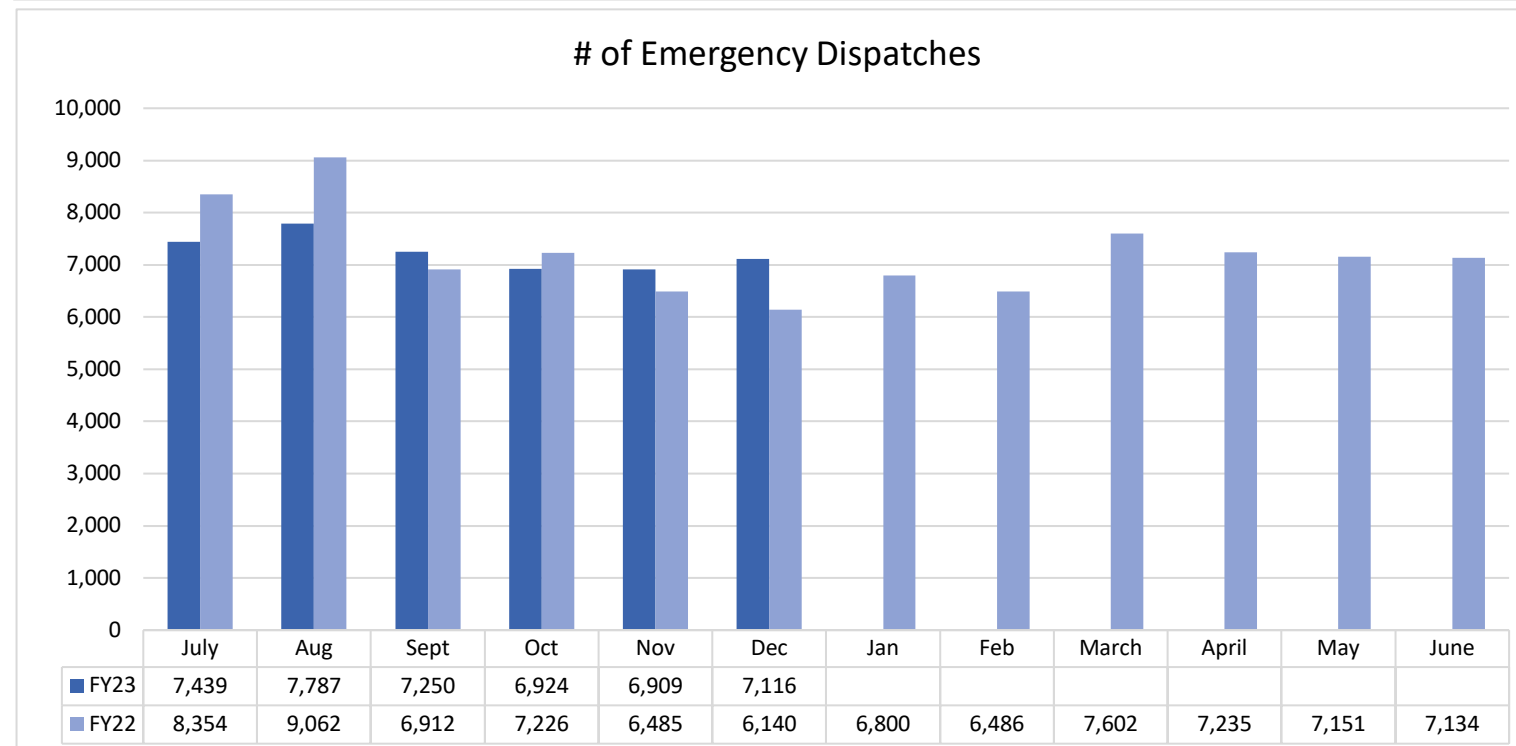
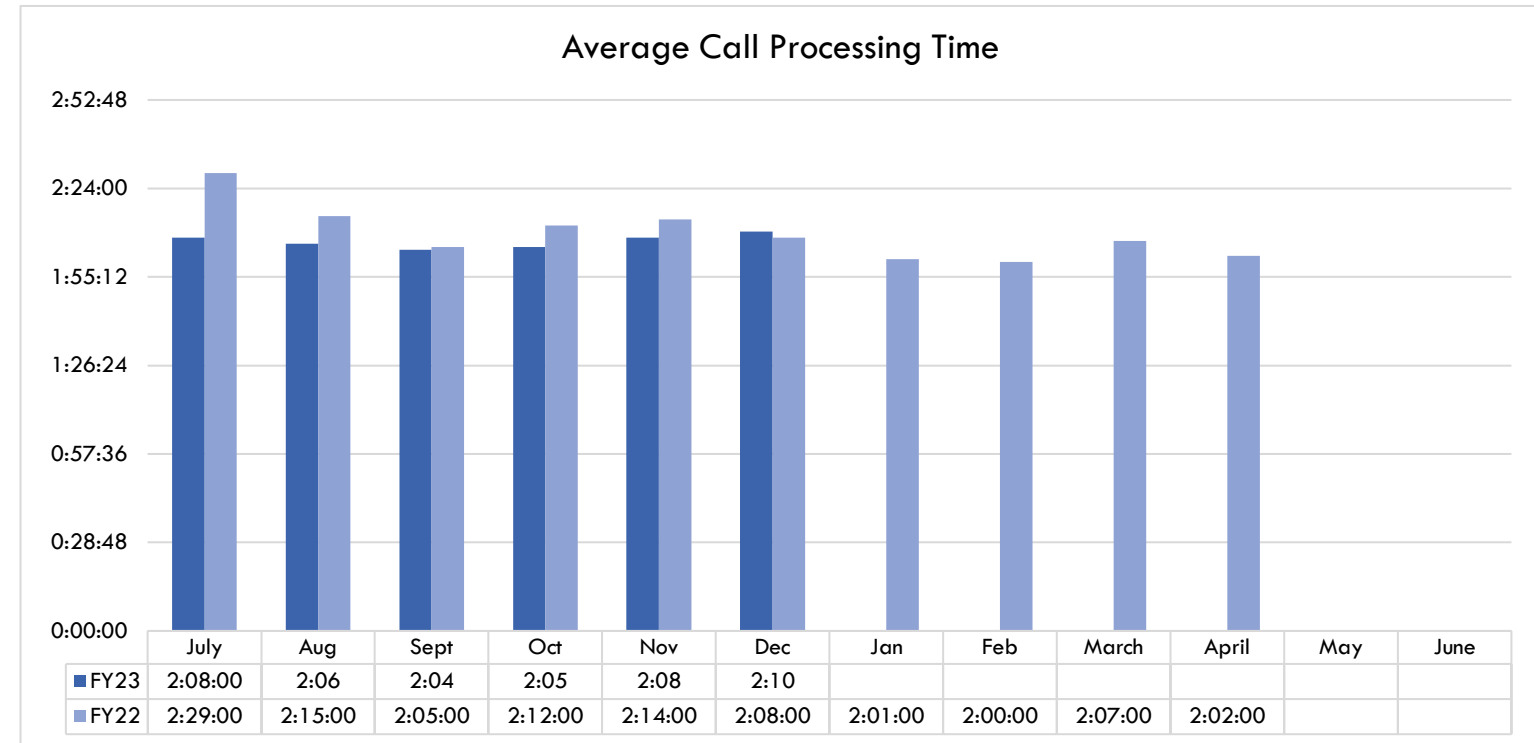
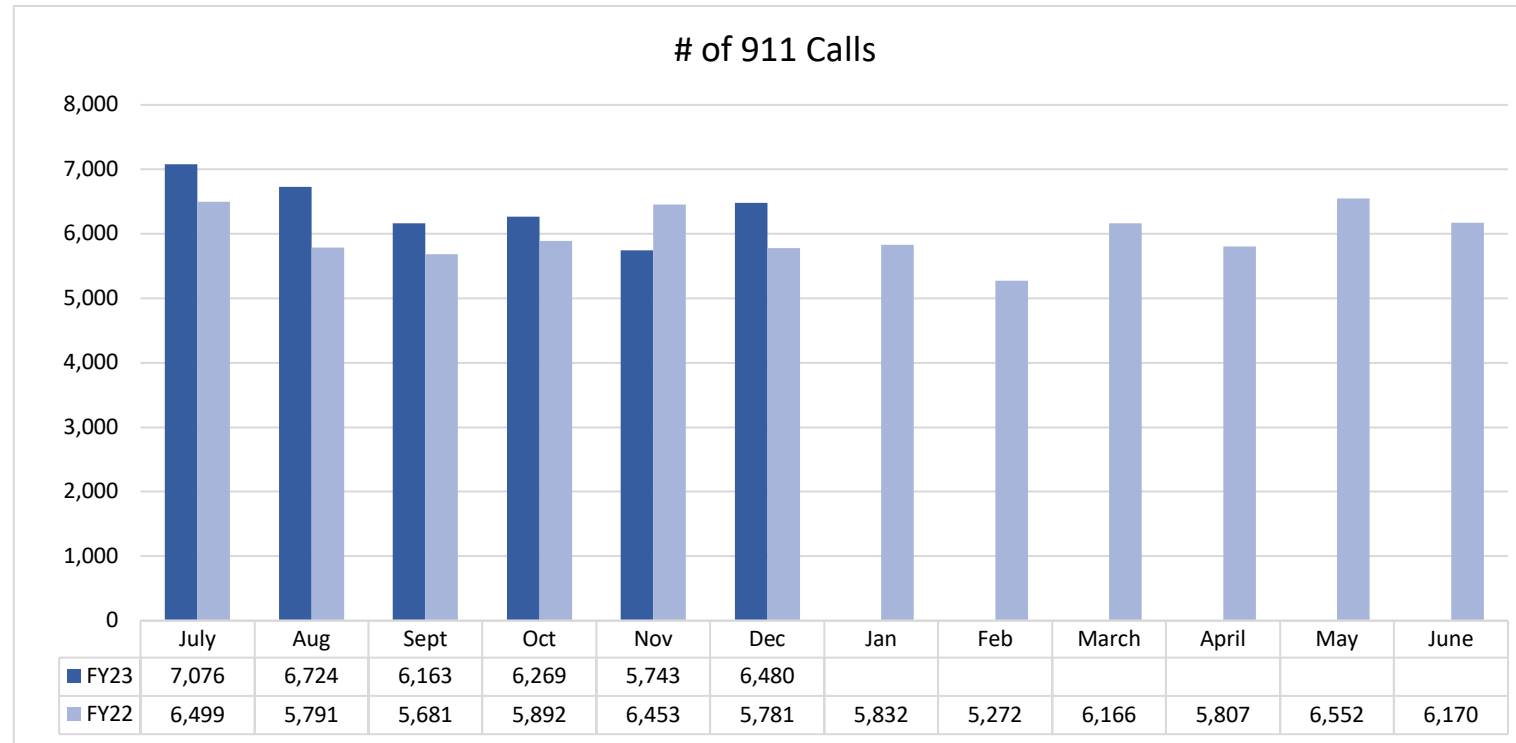
CCTV Sewer Inspections



	July	Aug	Sept	Oct	Nov	Dec	Jan	Feb	March	April	May	June
FY23	77.9	1941.5	14609	8629	4071	2359						
FY22	11052	11680	21575	22825	24548	26449	7145	19866	27292	34456	4359	6470

Work orders for CCTV inspections include catch basins, gravity mains, drainage inlets, combined sewer assets, manholes, sewer runs. Work performed includes preventative maintenance and reactive inspections based on service requests.

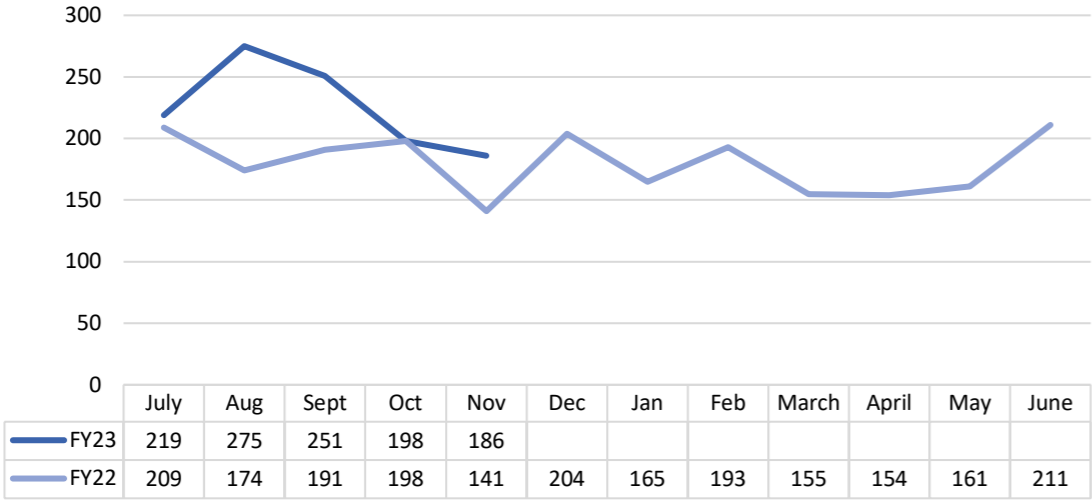
DEPARTMENT OF EMERGENCY AND CUSTOMER COMMUNICATIONS (DECC)



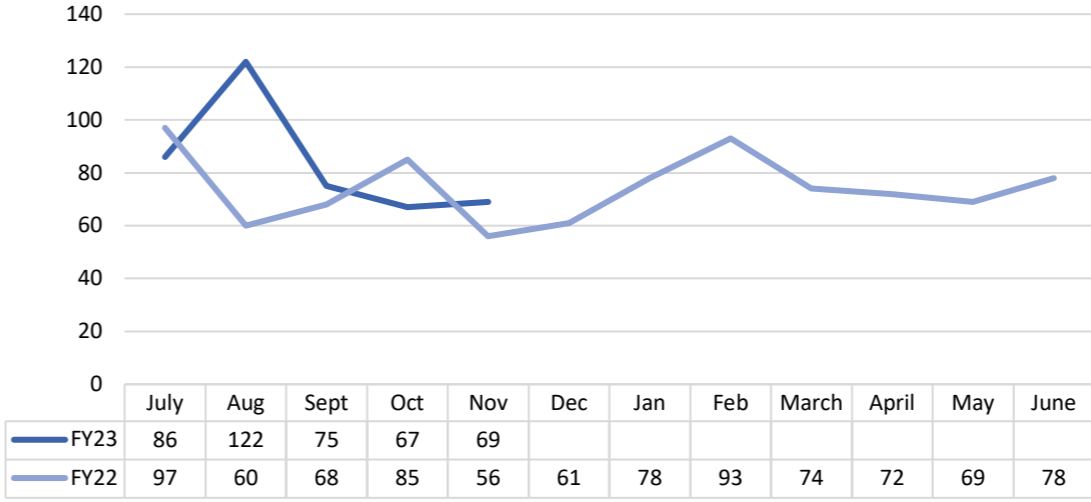
Notes/Comments:

Commonwealth Attorney

Misdemeanor Offenses Filed Against Adults



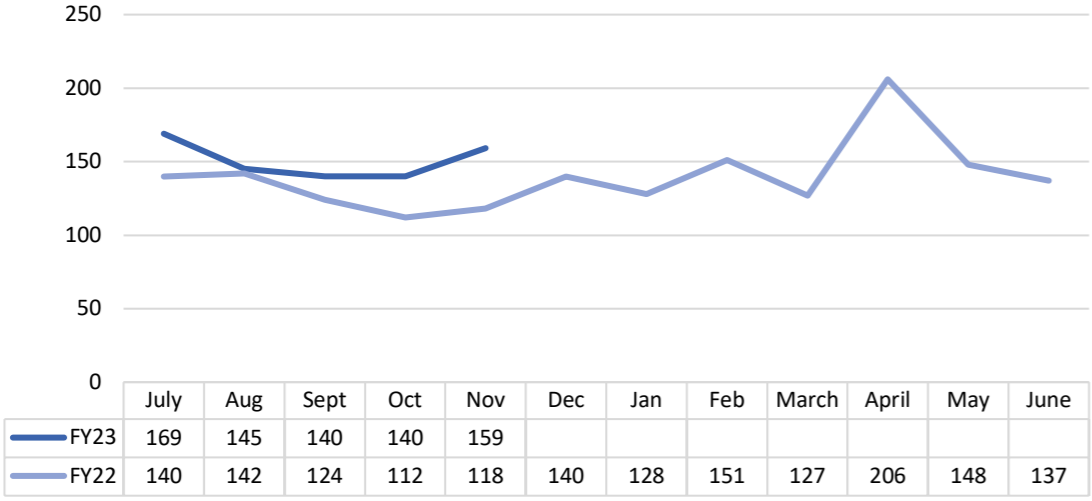
Felony Offenses Filed Against Adults



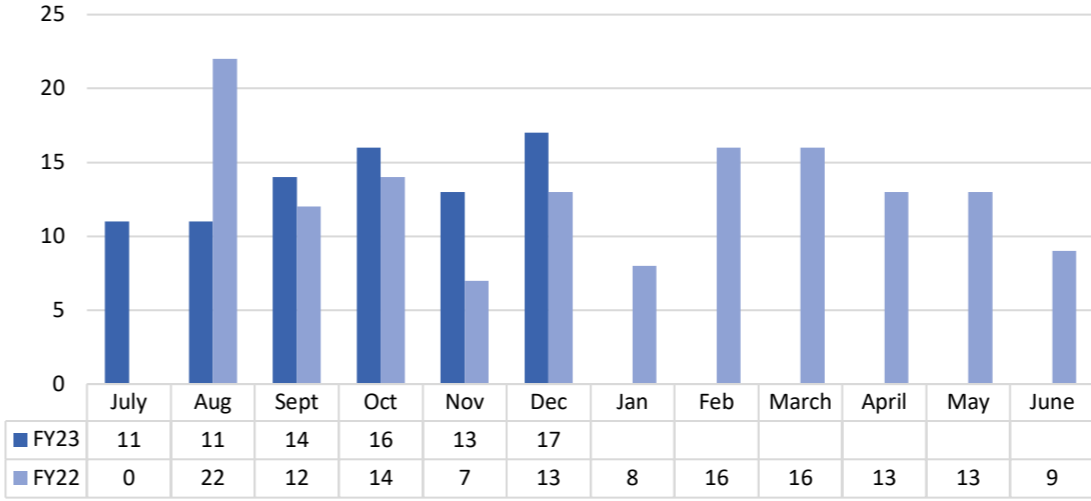
Notes/Comments:

- Misdemeanor and Felony data for FY23 September and October data is not yet available from state records.

Traffic Misdemeanor and Felony Offenses

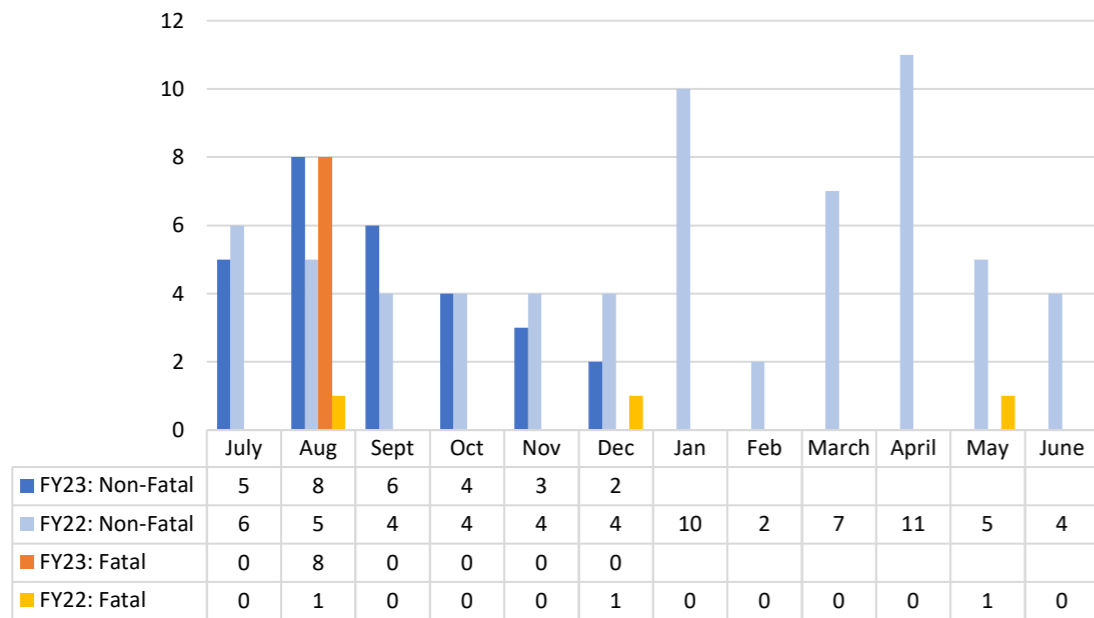


Grand Jury Indictments

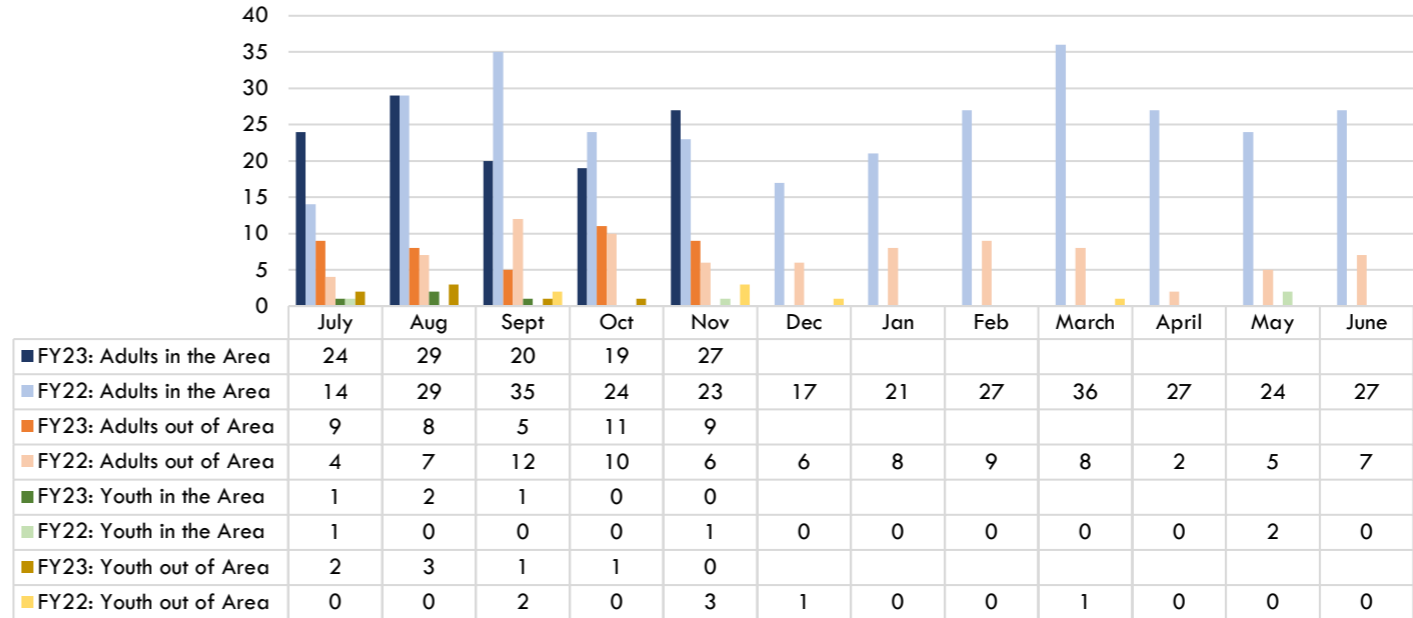


Department of Community and Human Services

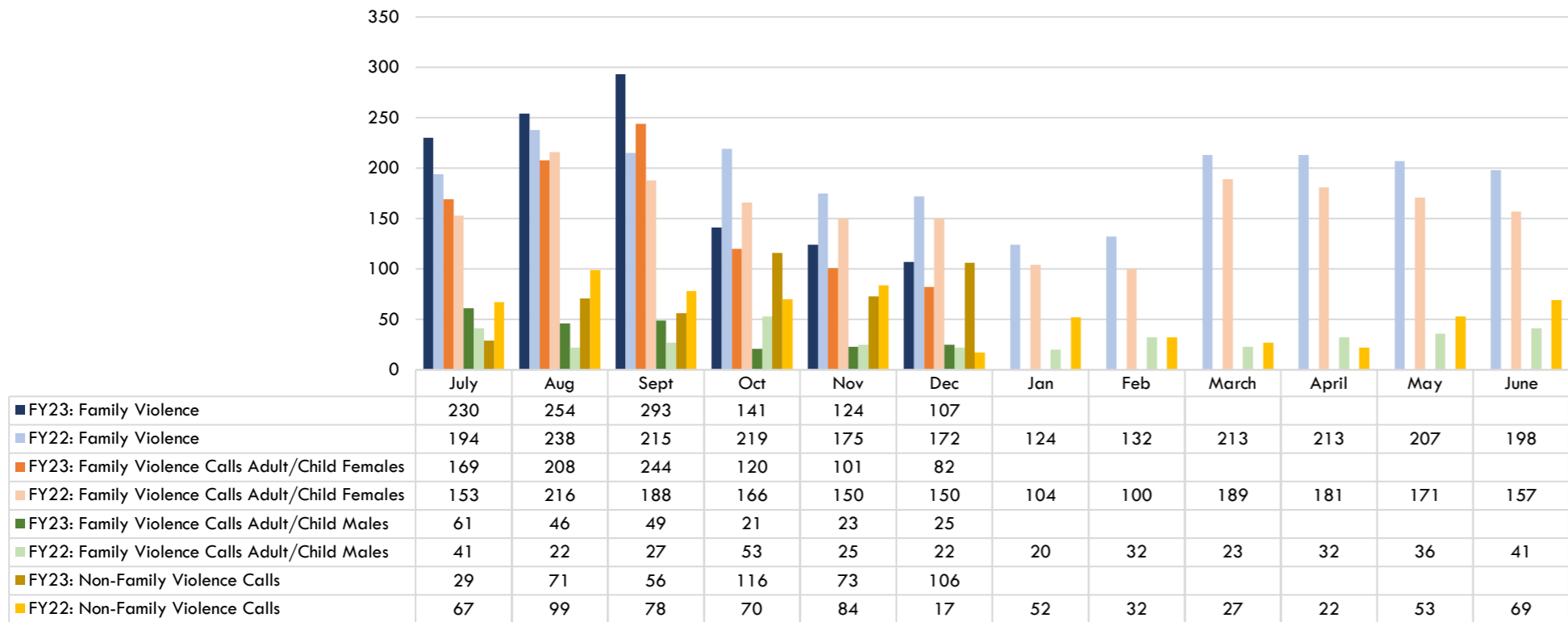
Opioid Overdoses



Temporary Detention Orders



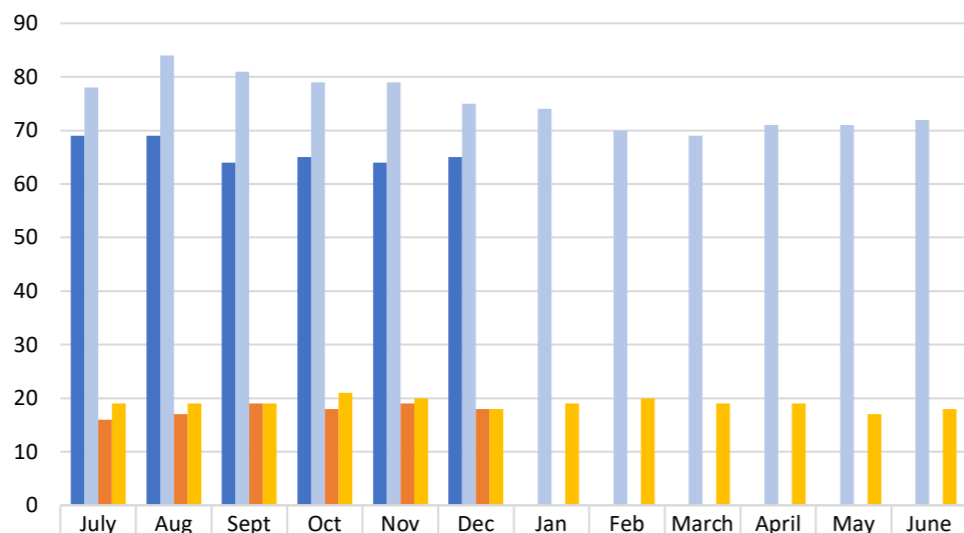
Domestic Violence Hotline Calls



Notes/Comments:

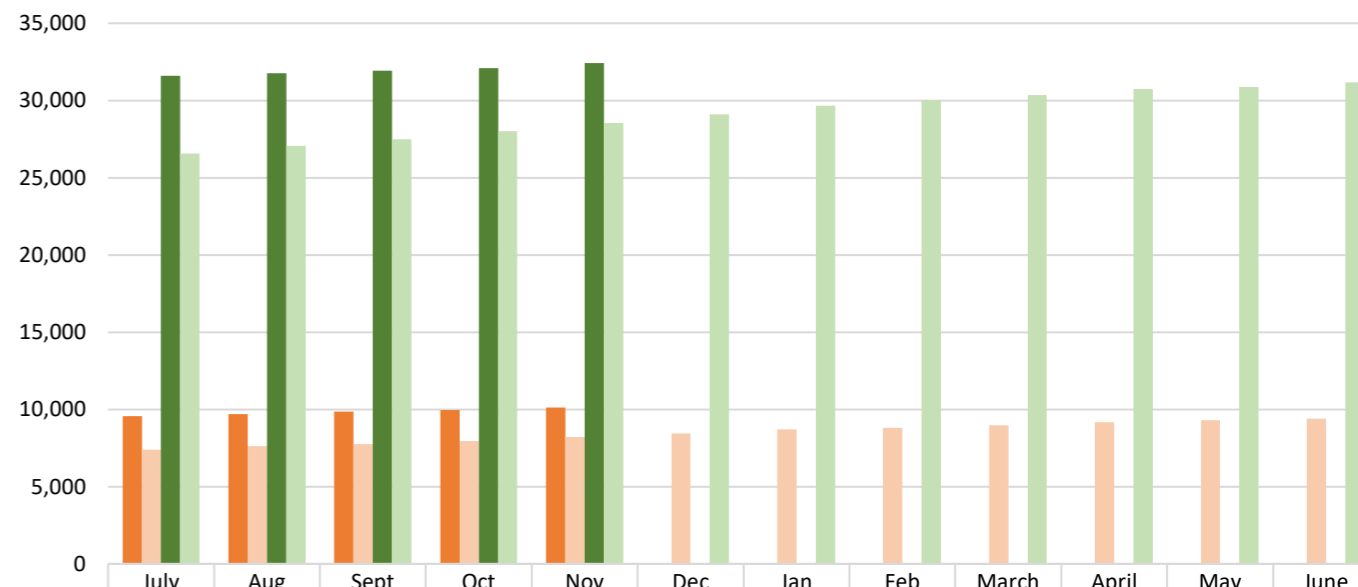
DCHS, continued

Foster Care



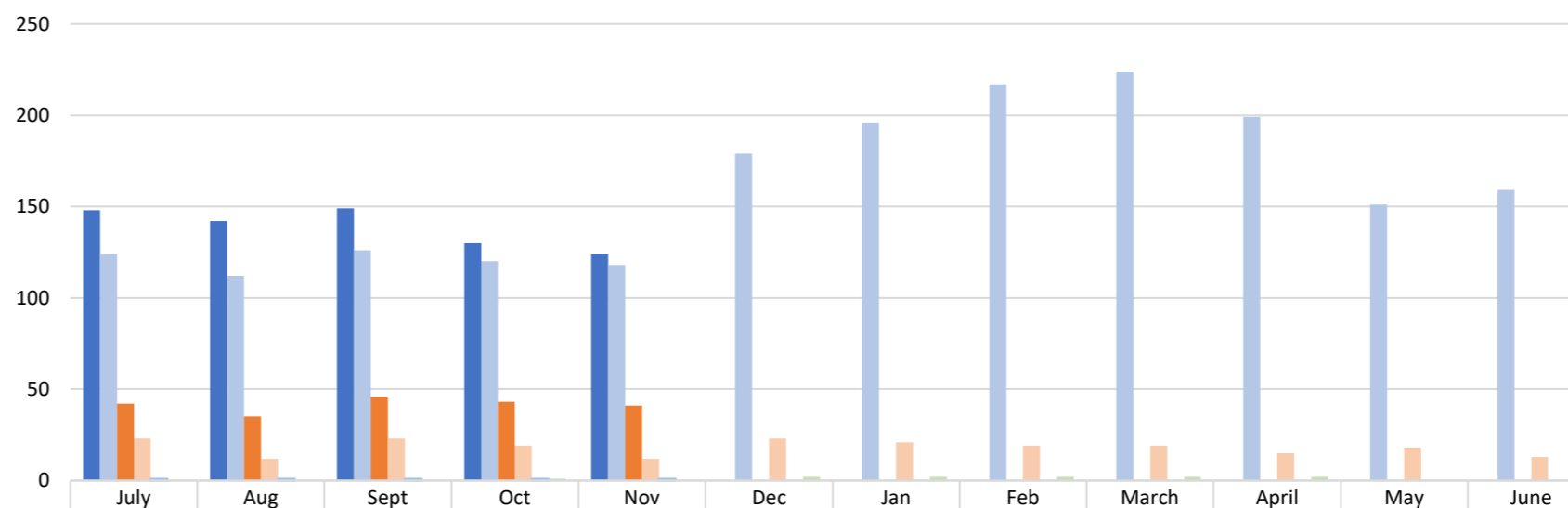
FY23: # of children in Foster Care (under 18)	69	69	64	65	64	65						
FY22: # of children in Foster Care (under 18)	78	84	81	79	79	75	74	70	69	71	71	72
FY23: # of 18-21 year olds receiving Foster Care services through Fostering Futures	16	17	19	18	19	18						
FY22: # of 18-21 year olds receiving Foster Care services through Fostering Futures	19	19	19	21	20	18	19	20	19	19	17	18

Medicaid Expansion Program



FY23: Enrollees	9,554	9,688	9,869	9,967	10,139							
FY22: Enrollees	7,409	7,634	7,755	7,945	8,206	8,459	8,696	8,800	8,970	9,177	9,302	9,410
FY23: Persons receiving Medical Assistance	31,585	31,756	31,928	32,090	32,426							
FY22: Persons receiving Medical Assistance	26,557	27,059	27,485	28,007	28,541	29,109	29,675	30,016	30,338	30,741	30,890	31,175

Homelessness

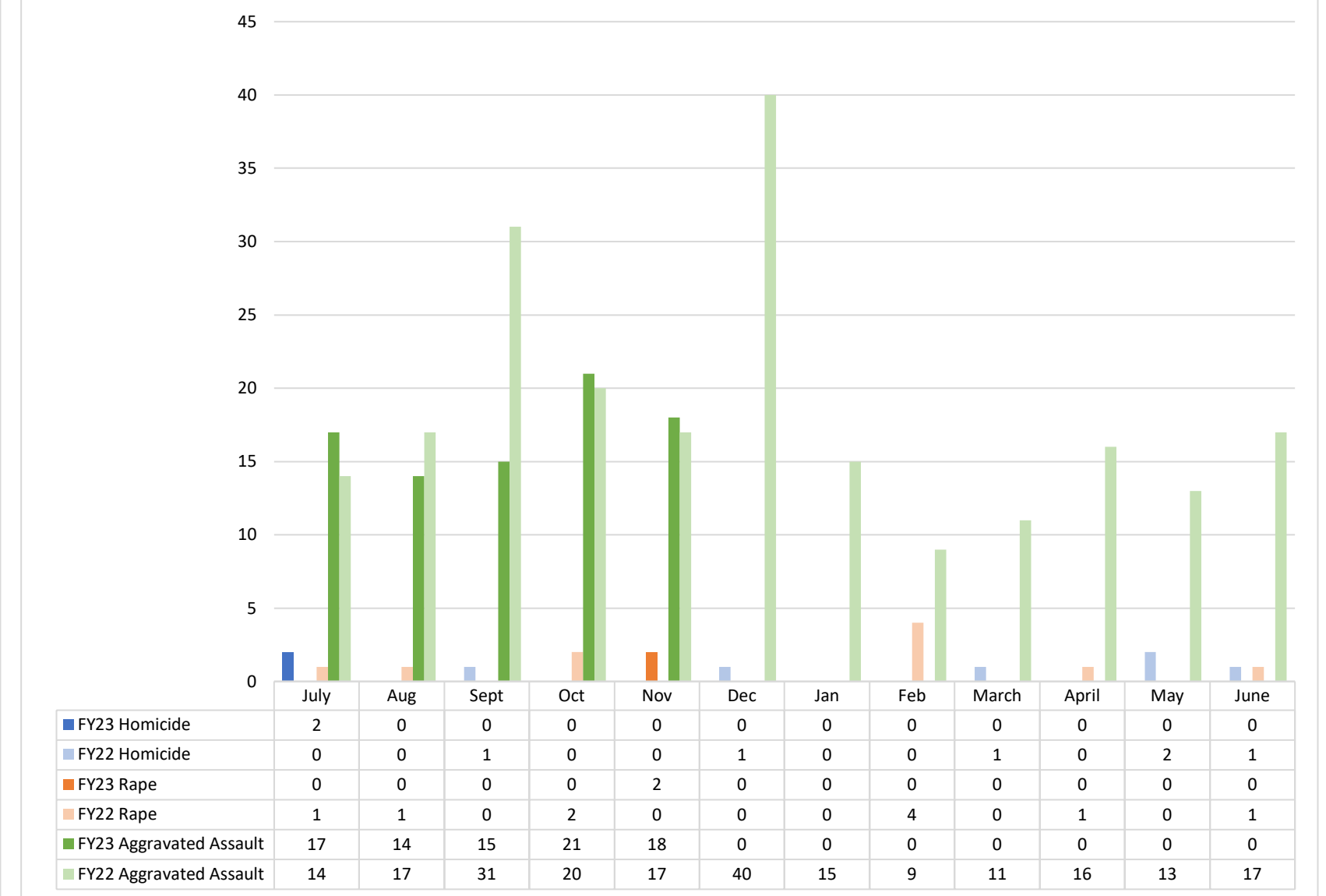
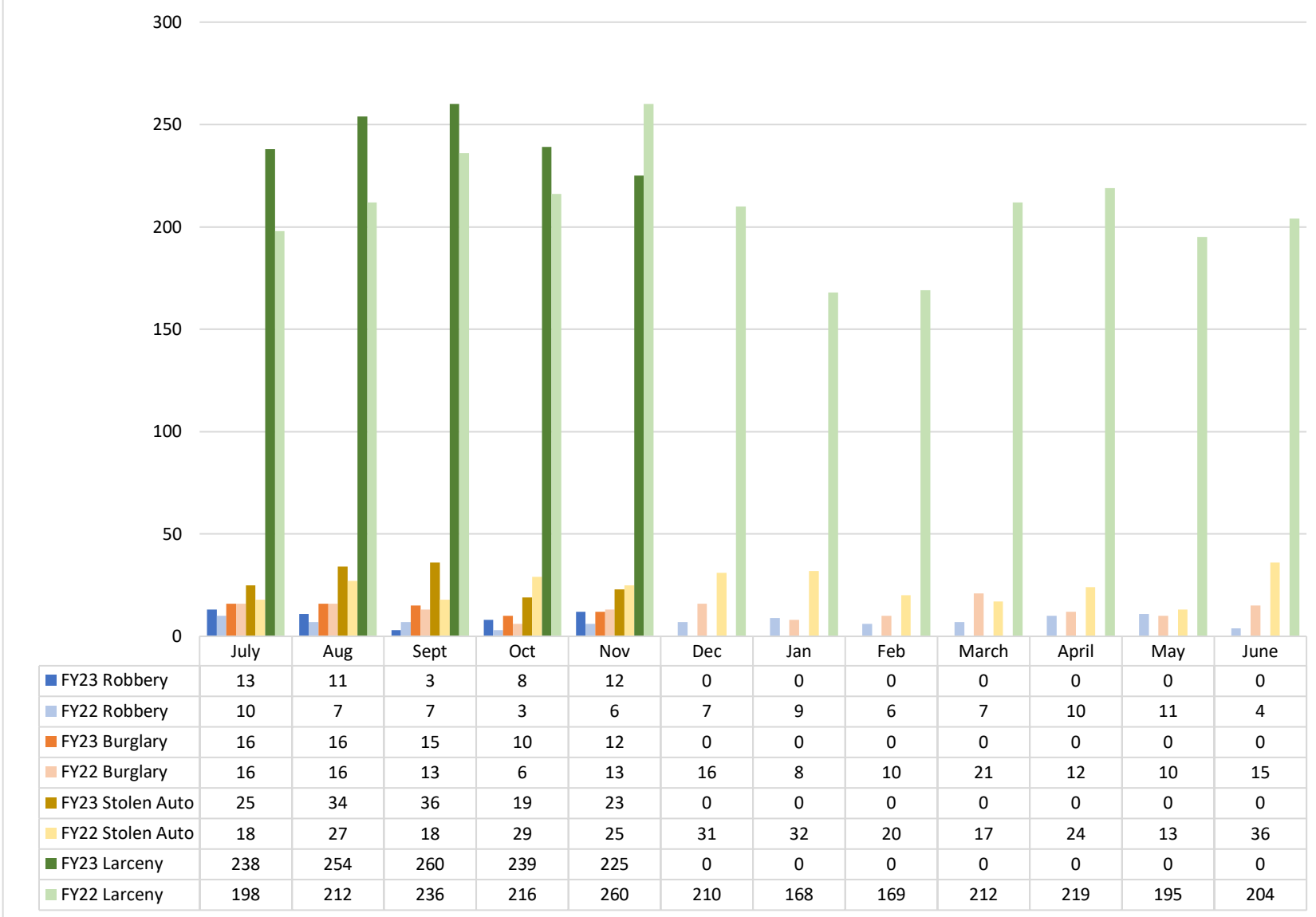


FY23: Total Entries to Emergency Shelter, Safe Haven, or Transitional Housing	148	142	149	130	124							
FY22: Total Entries to Emergency Shelter, Safe Haven, or Transitional Housing	124	112	126	120	118	179	196	217	224	199	151	159
FY23: Individuals Experiencing Homelessness for the First Time	42	35	46	43	41							
FY22: Individuals Experiencing Homelessness for the First Time	23	12	23	19	12	23	21	19	19	15	18	13
FY23: Medically Fragile Homeless with APS Involvement	1	1	1	1	1							
FY22: Medically Fragile Homeless with APS Involvement	0	0	0	1	0	2	2	2	2	2	0	0

Notes/Comments:

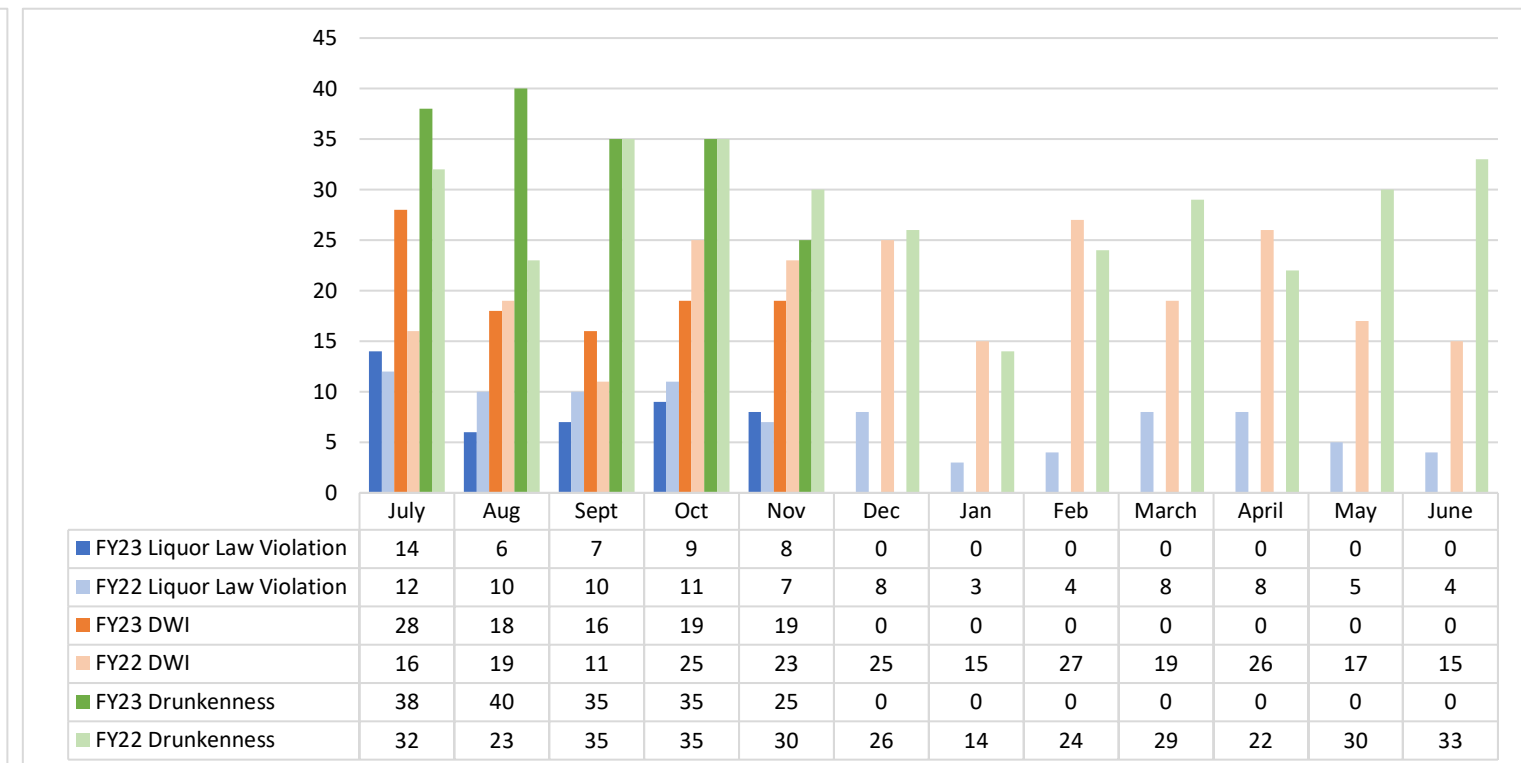
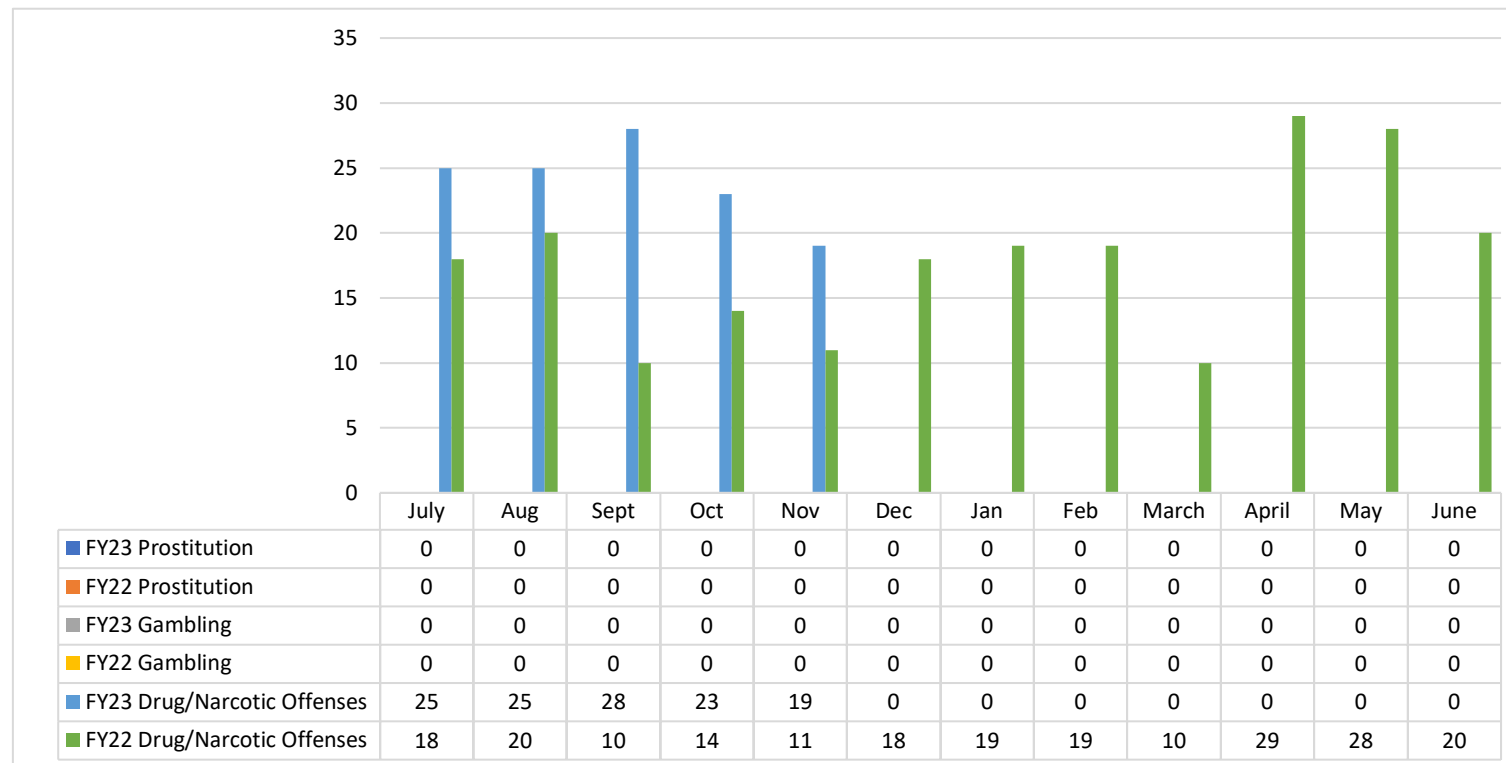
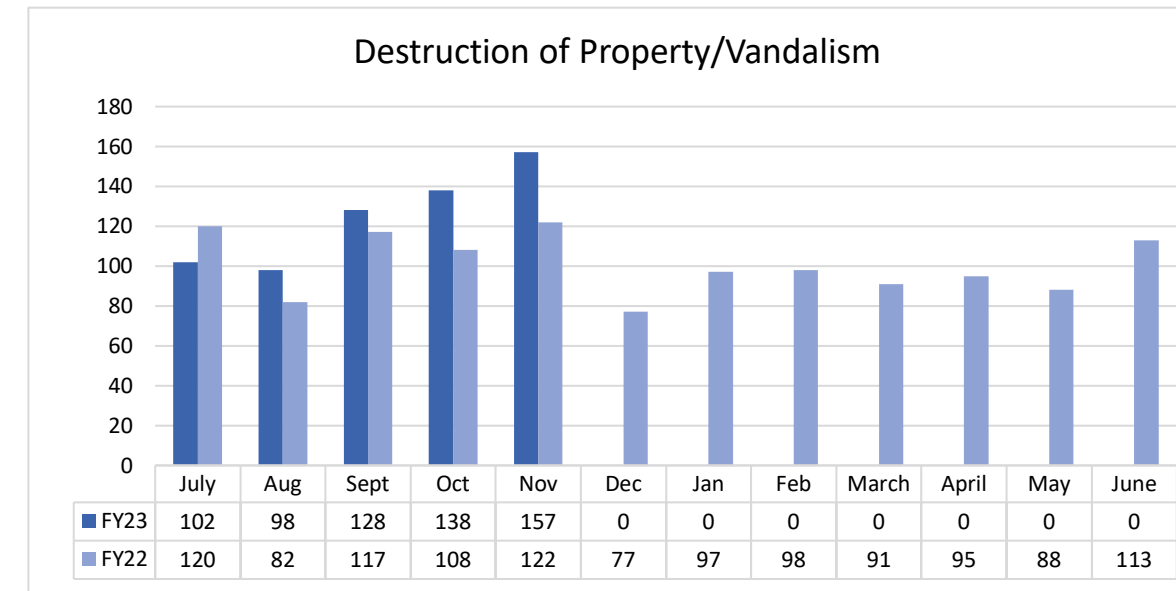
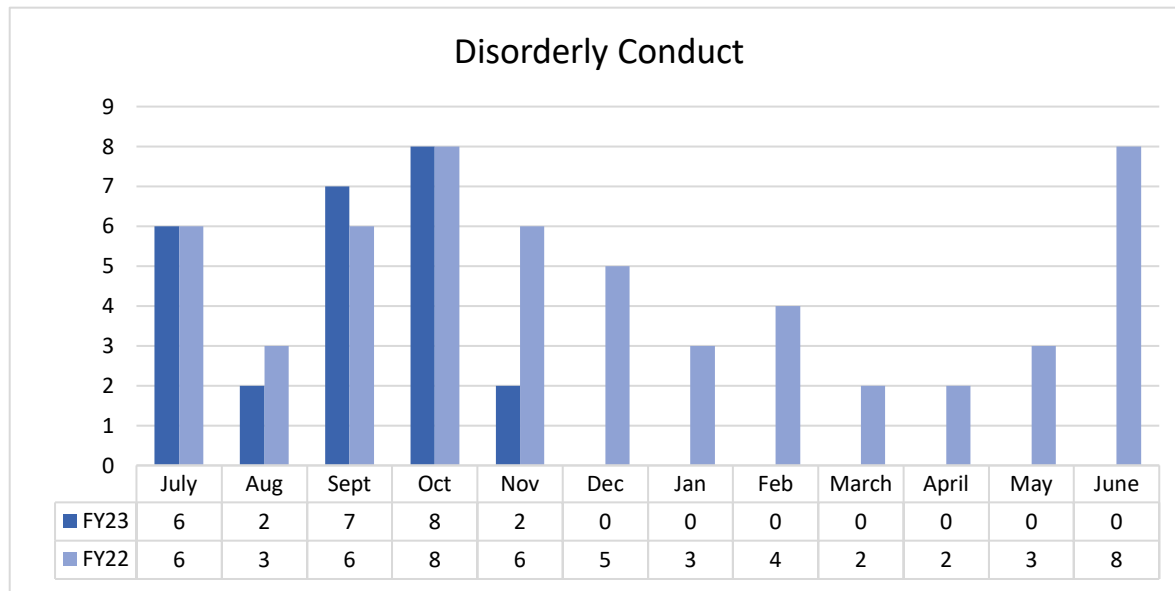
Alexandria Police Department, Part 1 Crimes

The following offenses are captured by the date they were reported to APD, not the date they occurred. This is in line with NIBRS reporting requirements. The data is preliminary and subject to change so is not official and should not be disseminated without permission from the Chief of Police. There may be discrepancies if prior month report is in draft on the date the data was queried. This document was updated by APD/CAS/ACC on 12/22/2022.



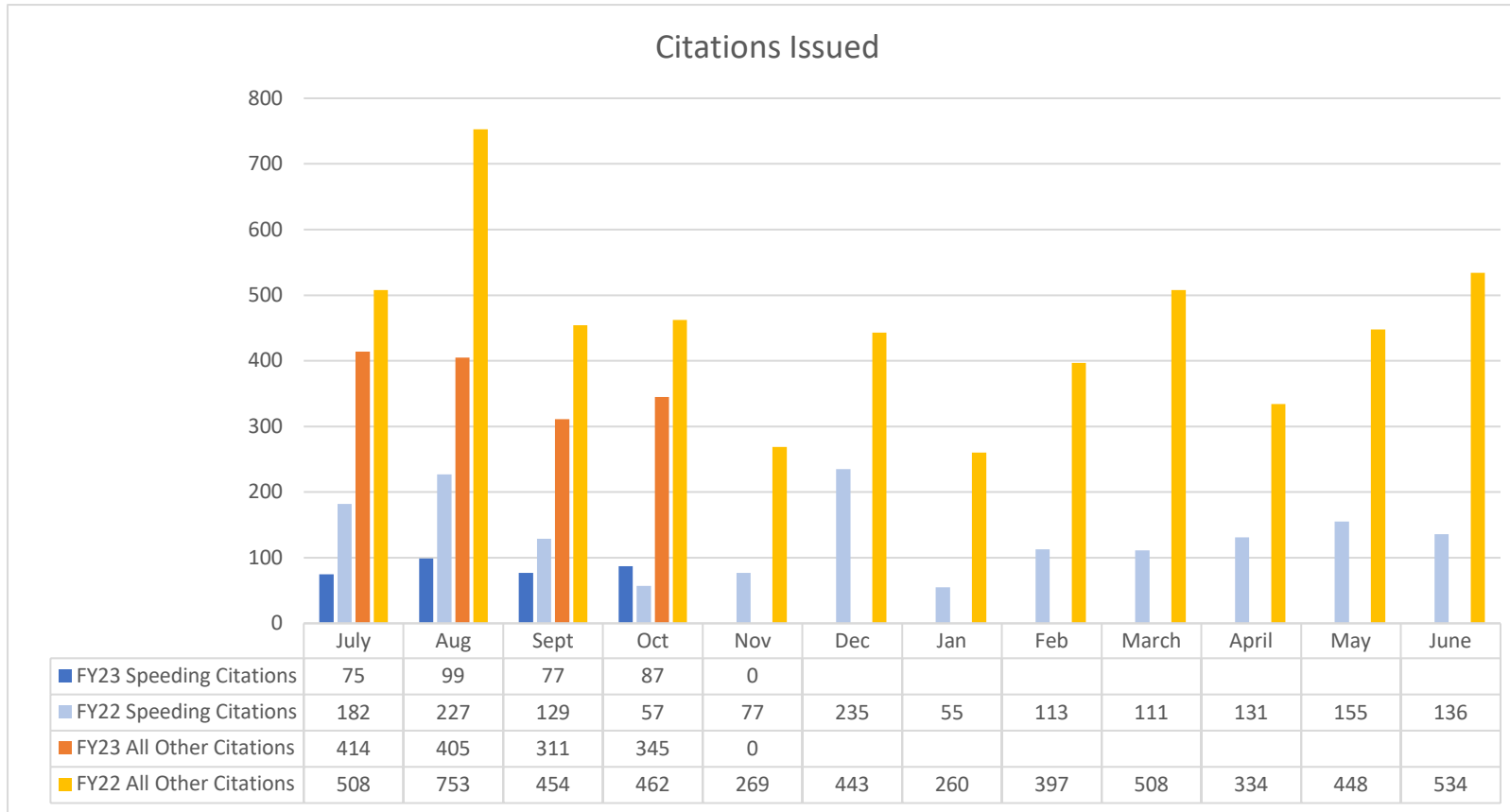
Alexandria Police Department, Nuisance Crimes

The following offenses are captured by the date they were reported to APD, not the date they occurred. This is in line with NIBRS reporting requirements. The data is preliminary and subject to change so is not official and should not be disseminated without permission from the Chief of Police. There may be discrepancies if prior month report is in draft on the date the data was queried. This document was updated by APD/CAS/ACC on 12/22/2022.



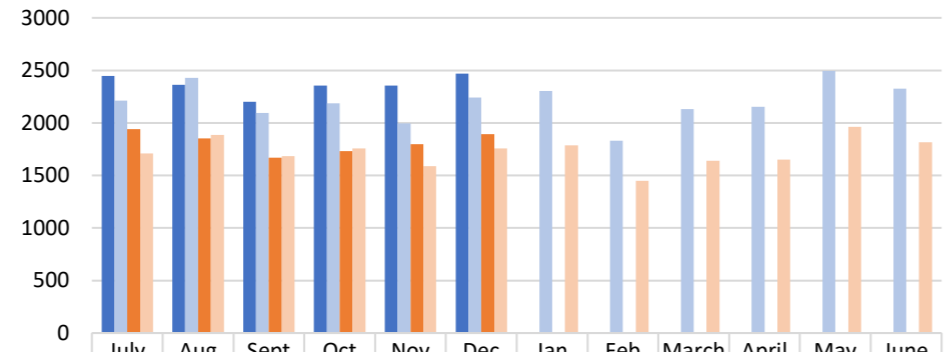
Alexandria Police Department, Citations

The below citation data is a compilation of handwritten and electronic (eCitations) citations. This document was updated by APD/CAS/ACC on 12/22/2022.

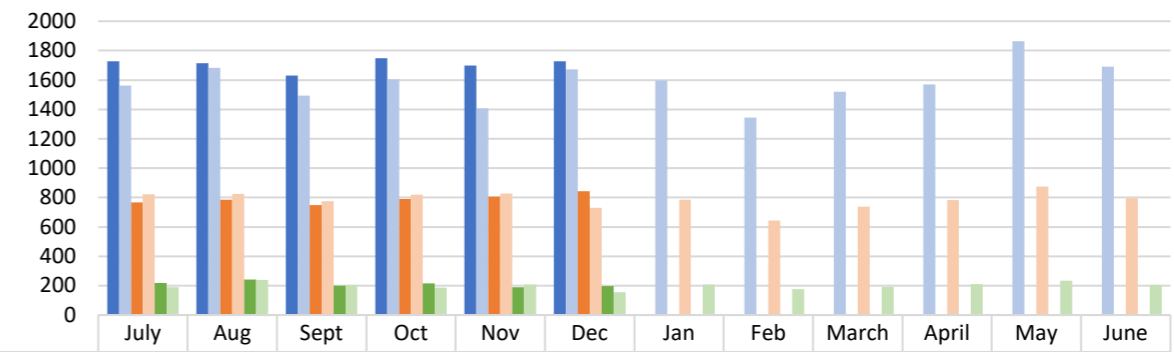


*November citation data is not yet available as handwritten citations must be manually tallied and entered and they have not yet been fully reviewed. November eCitation data is available upon request but was not listed as it's only half the data.

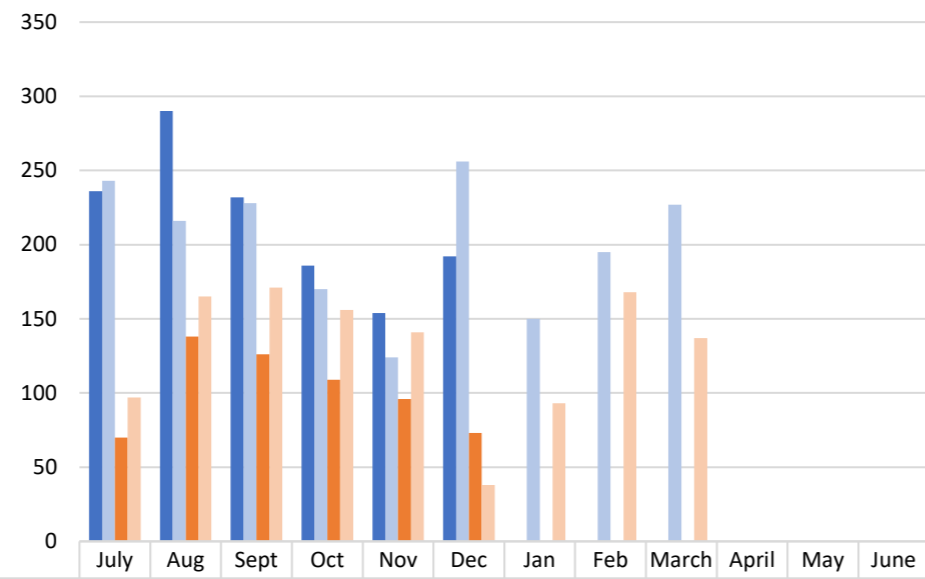
FIRE



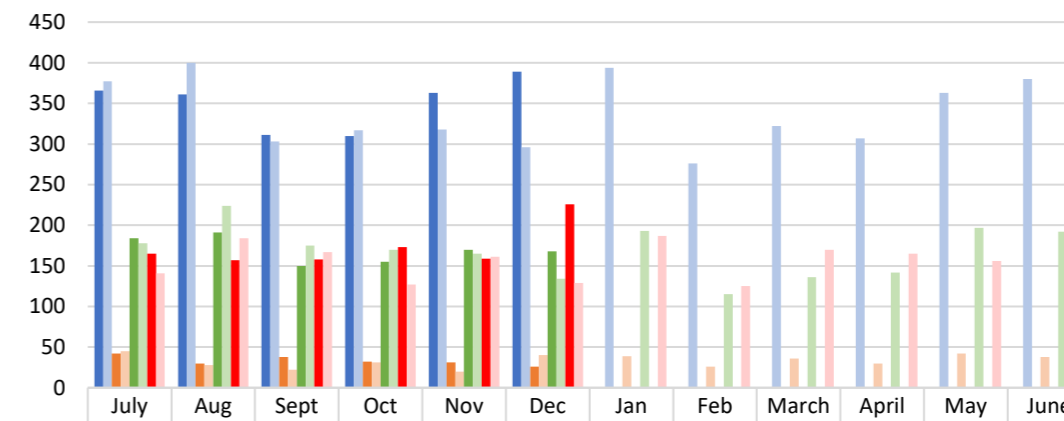
■ FY23 Total incident responses by AFD (Including Mutual Aid)	2448	2361	2202	2354	2356	2471						
■ FY22 Total incident responses by AFD (Including Mutual Aid)	2212	2428	2096	2188	1994	2241	2303	1832	2133	2154	2496	2326
■ FY23 Total incident responses to by AFD (Within Alexandria Only)	1939	1853	1670	1732	1797	1892						
■ FY22 Total incident responses to by AFD (Within Alexandria Only)	1708	1884	1684	1758	1590	1756	1787	1449	1638	1650	1964	1815



■ FY23 Incidents dispatched for medical or rescue reasons	1727	1715	1629	1748	1699	1727						
■ FY22 Incidents dispatched for medical or rescue reasons	1563	1682	1495	1605	1406	1673	1595	1344	1520	1571	1865	1690
■ FY23 # of patients transported by AFD units	766	785	748	790	806	842						
■ FY22 # of patients transported by AFD units	823	825	775	819	827	730	785	644	738	782	874	795
■ FY23 # of patients who declined transport by AFD	217	241	200	215	190	198						
■ FY22 # of patients who declined transport by AFD	190	240	206	186	208	154	207	176	192	210	233	204

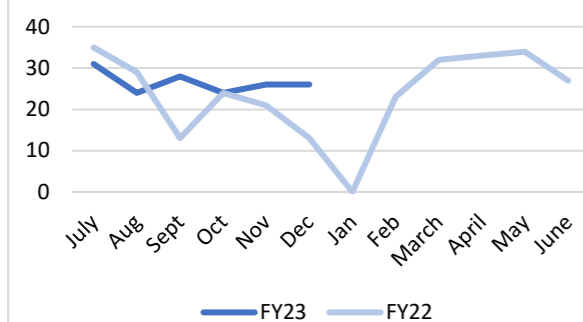


■ FY23: Number of fire code inspections by the Fire Marshal's Office (FMO)	236	290	232	186	154	192						
■ FY22: Number of fire code inspections by the Fire Marshal's Office (FMO)	243	216	228	170	124	256	150	195	227			
■ FY23: Number of fire protection systems inspections by the Fire Protection Systems (FPS) Retesting Unit	70	138	126	109	96	73						
■ FY22: Number of fire protection systems inspections by the Fire Protection Systems (FPS) Retesting Unit	97	165	171	156	141	38	93	168	137			



■ FY23: Incidents dispatched for fire or smoke	366	361	311	310	363	389						
■ FY22: Incidents dispatched for fire or smoke	377	400	303	317	318	296	394	276	322	307	363	380
■ FY23: Incidents resulting in structures, vehicles, or outside fires	42	30	38	32	31	26						
■ FY22: Incidents resulting in structures, vehicles, or outside fires	45	28	22	31	20	40	39	26	36	30	42	38
■ FY23: Incidents resulting in false calls, malfunctioning detection & suppression systems, or unintentional activation of a smoke detector	184	191	150	155	170	168						
■ FY22: Incidents resulting in false calls, malfunctioning detection & suppression systems, or unintentional activation of a smoke detector	178	224	175	170	165	134	193	115	136	142	197	192
■ FY23: Incidents for public service (non-emergency)	165	157	158	173	159	226						
■ FY22: Incidents for public service (non-emergency)	141	184	167	127	161	129	187	125	170	165	156	137

Community Paramedic Contacts



Notes/Comments:

- Fire Marshals and Fire Protection Inspections to be updated next quarter.