



Flood Action Alexandria: Program Update

Presented to:

Hume Spring Civic Association

July 24, 2023

Tonight's Agenda

1. Introductions (3 Mins.)
2. Project Funding and Goals (3 Mins.)
3. Project Update: Edison Street Drainage Improvements (3 Mins.)
4. Project Update: Reed Ave & Dale Street Drainage Improvements (3 Mins.)
5. Questions and Answers (5 Mins or as allowed)

Introductions

AGENDA ITEM #1

Projects and Funding

1. Edison Street Cul-De-Sac Drainage Improvements
 2. W. Reed Ave Curb Inlets + Dale Street Overland Channel
 3. Mt. Vernon Dual Culvert Replacement
- Elements of the Edison and Dale Large Capacity project scheduled for funding in FY2026
 - Accelerated through grant award from the Virginia Community Flood Preparedness Fund (CFPF)

Projects	State Grant Funding (CFPF)	City Funding (Stormwater Utility Fee)
Edison Street Cul-De-Sac Drainage Improvements	\$516,500	<i>At least \$516,500</i>
W. Reed Ave Curb Inlets + Dale Street Overland Channel		
Mt. Vernon Dual Culvert Replacement	\$1,250,000	<i>At least \$1,250,000</i>

Project Goals

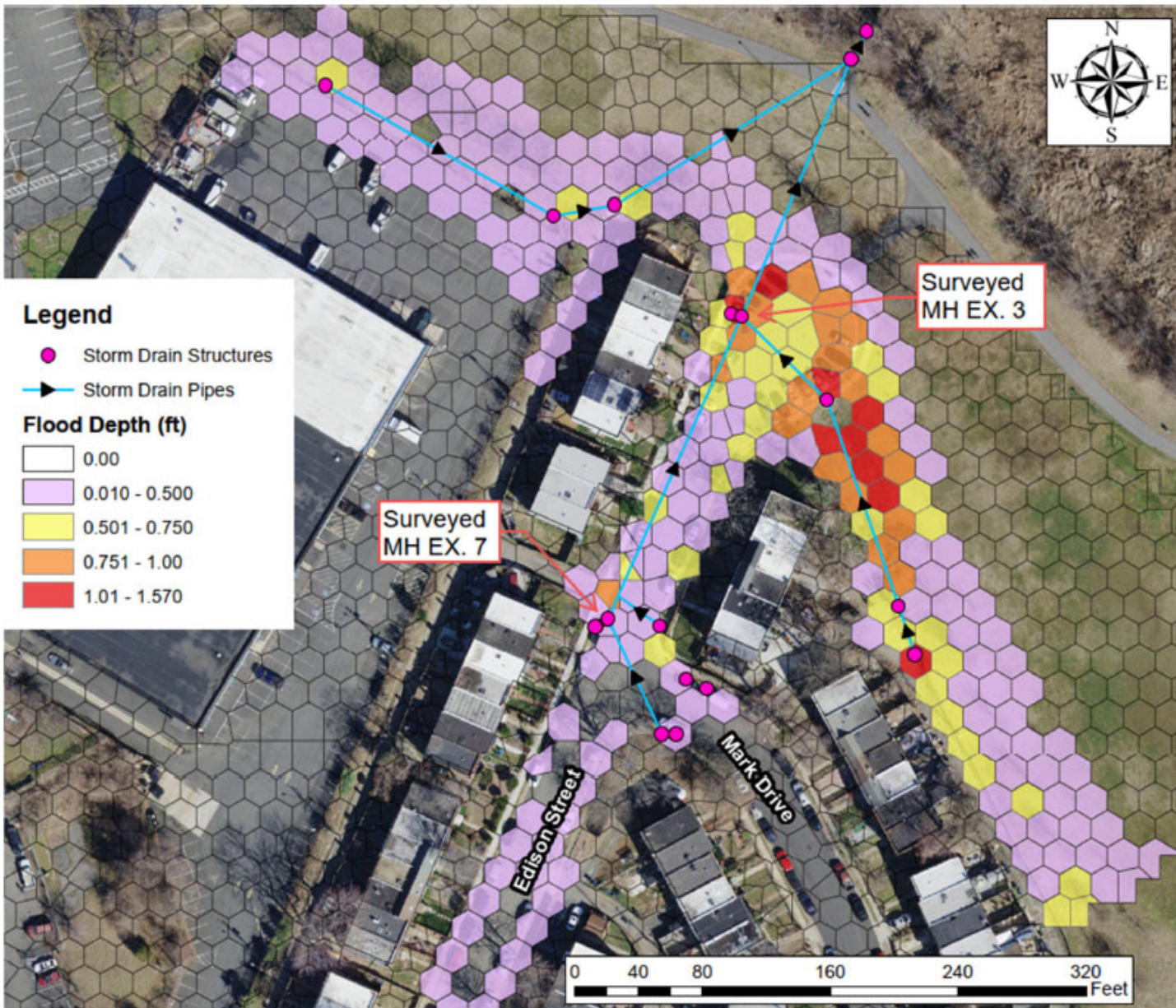
1. Reduce flooding in your neighborhood through the installation of new pipes and inlets
2. Convey the City's Standard Design Storm (10-Year) within the City's public Right-of-Ways
3. Mitigate flood impacts from larger storm events as much as possible
4. Ensure that upstream improvements do not adversely impact downstream properties

Project Updates

AGENDA ITEM #3 & #4

Note: In the Proposed Conditions flood maps shown subsequently, it is assumed that the Commonwealth, Ashby and Glebe Flood Mitigation project has been completed

Edison Street Drainage Improvements: Existing



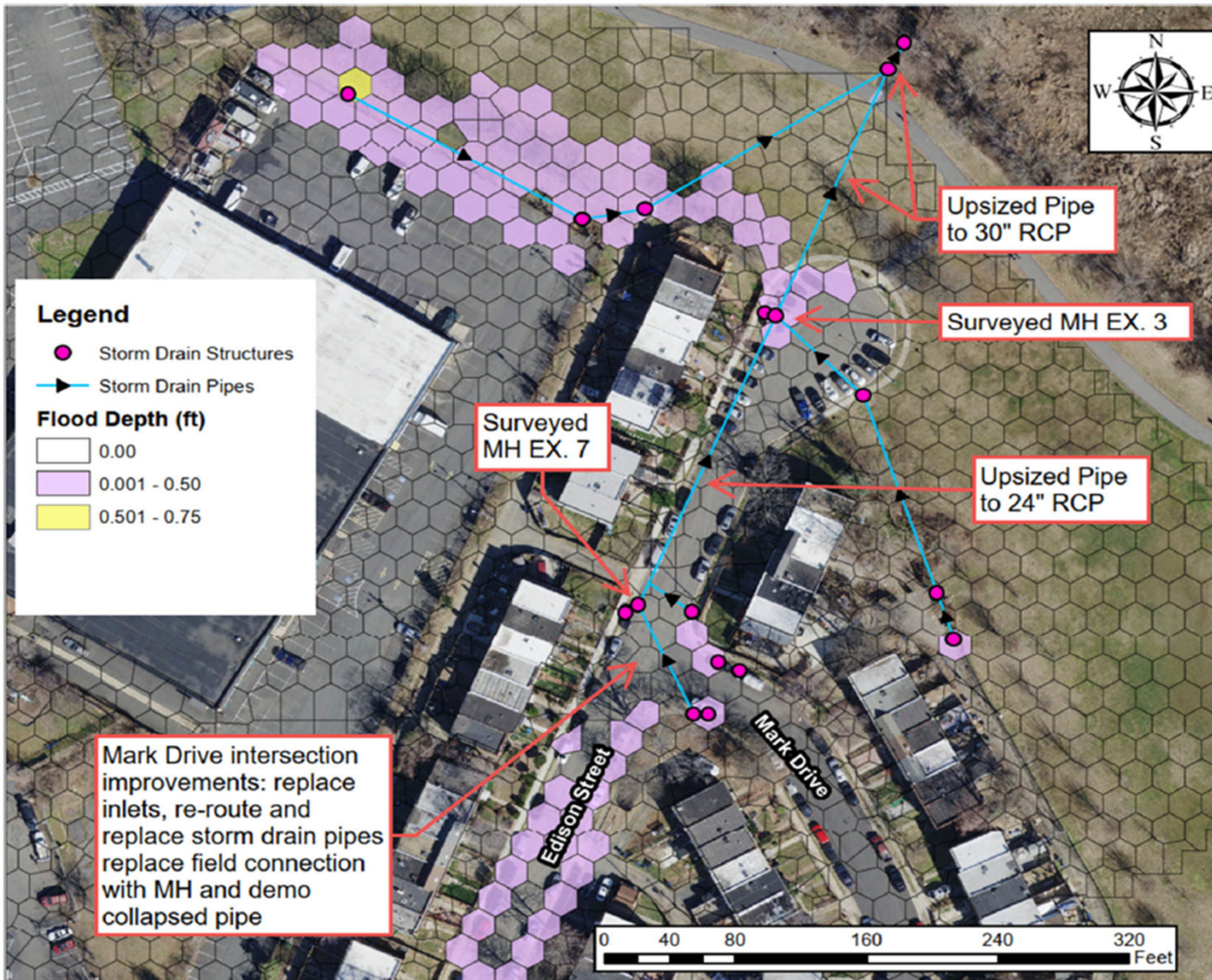
- Vehicular impacts from flooding on Edison Street
- Flooding exceeding 6" in depth (the curb height) at the lower end of Edison Street
- Impacts to private property

Edison Street Drainage Improvements: Existing

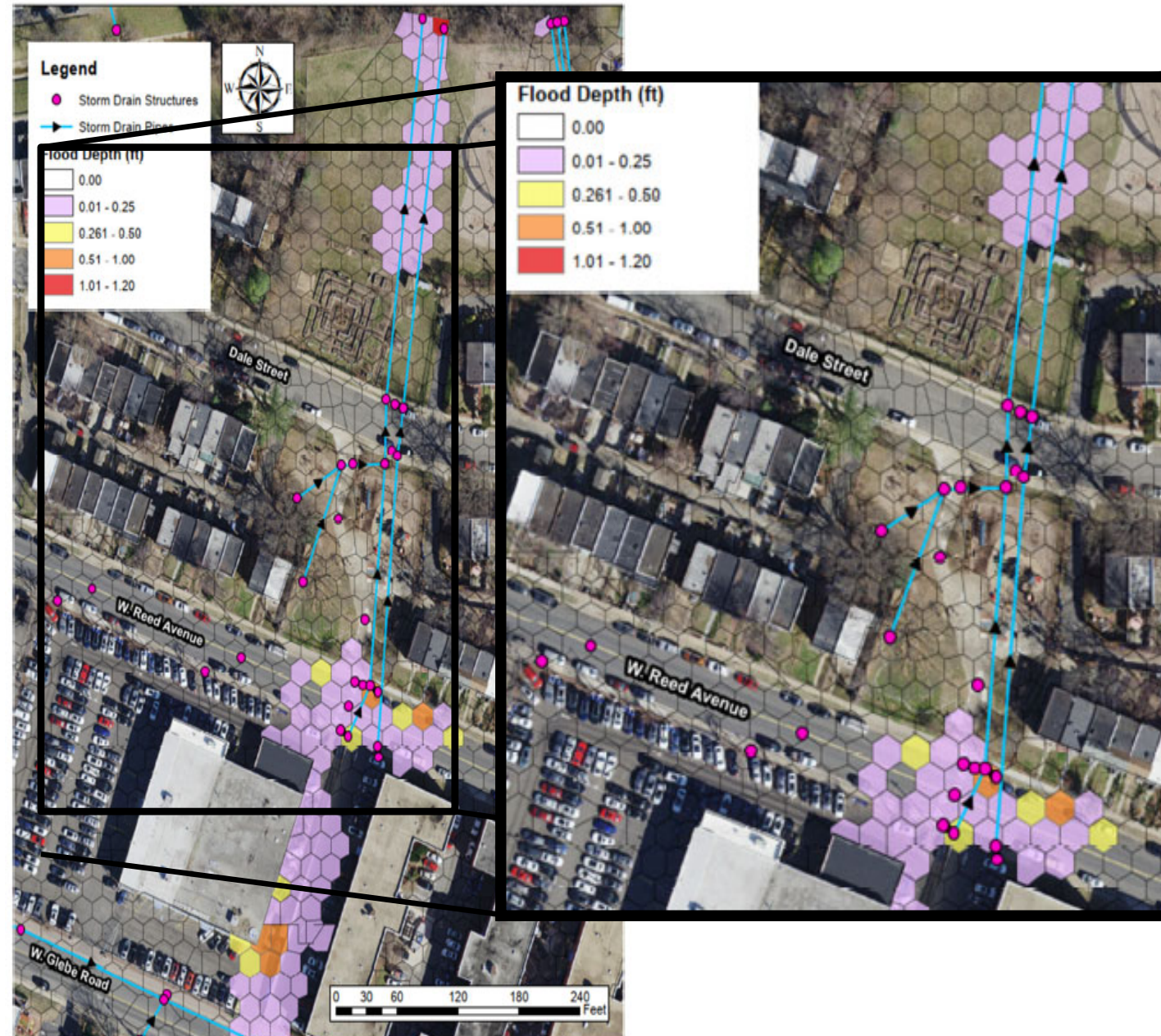
Increase the size of the main pipe conveying stormwater under Edison Street. Replace existing inlets and install more, larger inlets at Mark & Edison and lower Edison Street.

Status:	30% Design
Construction Start:	Q2 2024
Construction End:	Q1 2025

**All dates are estimates*

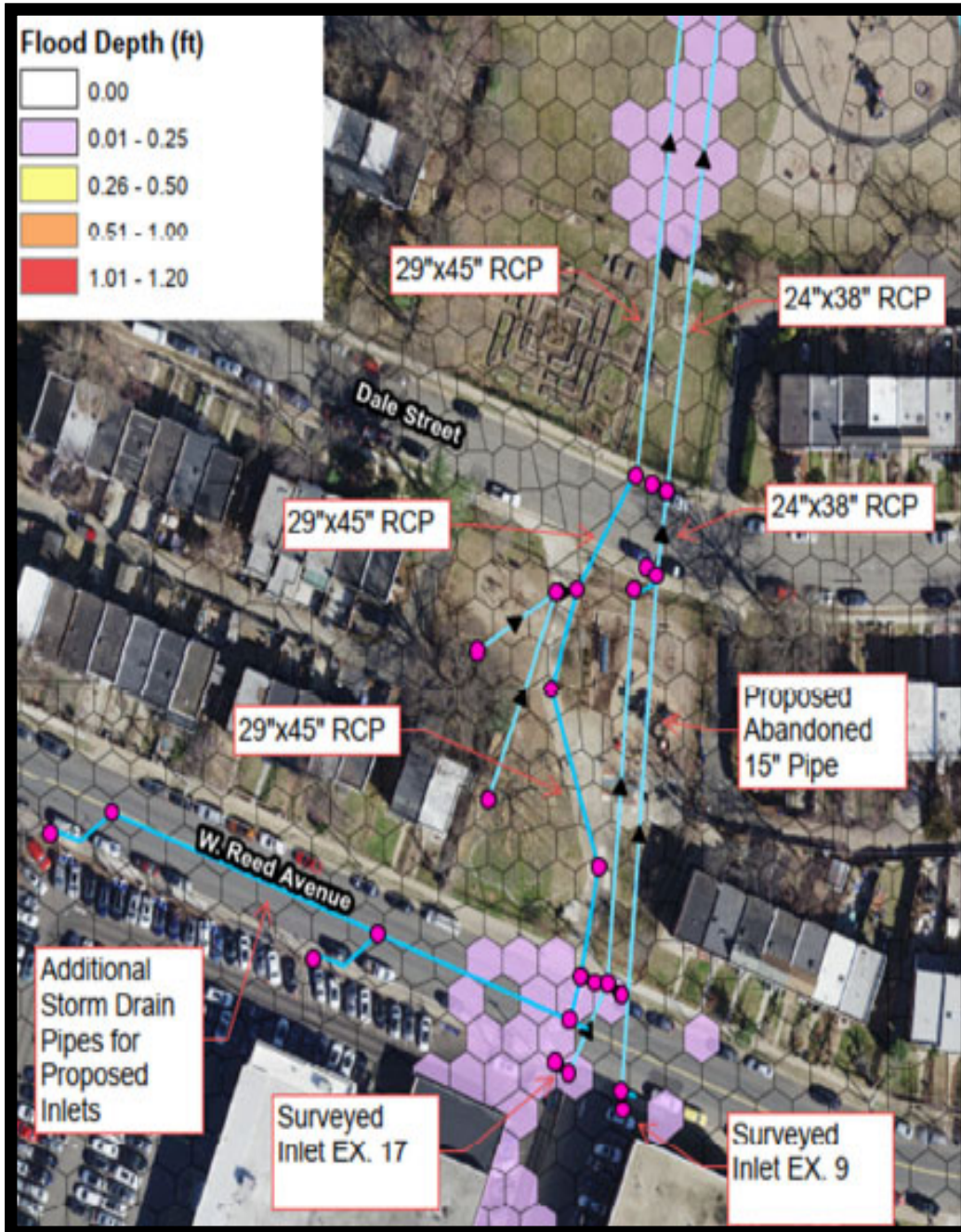


W. Reed Ave. Curb Inlets & Dale Street: Existing



- Vehicular impacts from flood waters W. Reed Ave
- Flooding exceeding 6" in depth (the curb height) at lower areas along W. Reed Ave
- Impacts to private property
- During larger events flood waters cross Hume Springs Park and Dale Street and flow through the community garden

W. Reed Ave. Curb Inlets & Dale Street: Existing



- Add inlets along W. Reed Ave to capture water before it ponds.
- Install a larger pipe under Hume Springs Park to convey more water.
- Replace the pipes running under the community garden area to the outfall.
- Modify the inlets on Dale St. to allow larger storms to flow through the open area adjacent to the community garden

Status:	30% Design
Construction Start:	Q2 2024
Construction End:	Q1 2025

**All dates are estimates*



Questions and Comments

AGENDA ITEM #5