

# About the Project

This Curb Extensions Near Schools (CENS) project, part of the Safe Routes to Schools (SRTS) program, is exploring the addition of new curb extensions near four schools that will make it easier and safer for children to walk to school. These were recommended in the 2017 SRTS Walk Audit Reports.

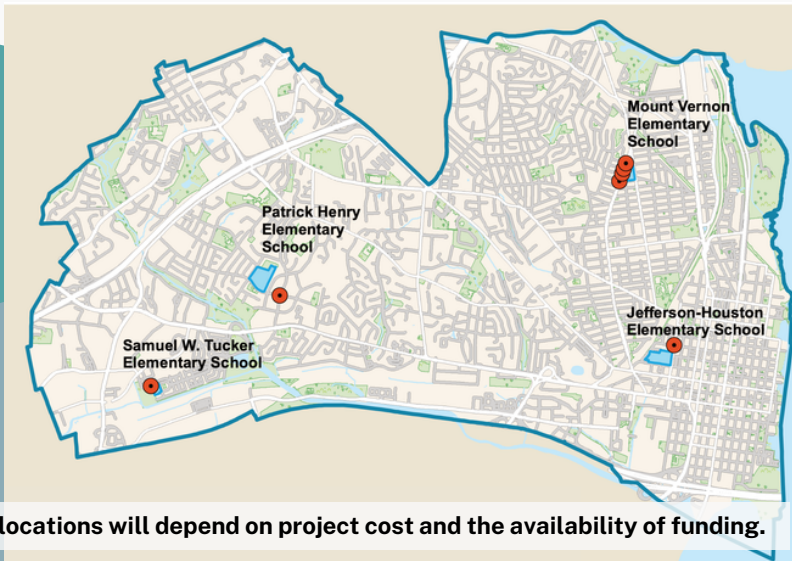
Curb extensions are commonly used to extend sidewalks at corners or at mid-block crossings. They are particularly valuable near schools where they shorten crossing distances, increase pedestrian visibility, and slow turning vehicles.

The City is developing a grant application to fund the design and construction of curb extensions near four schools. If awarded, funding is expected to be available beginning in 2024. Below is the proposed timeline (\*subject to change)

- **Summer 2023:** Planning
- **Fall 2023:** Grant Application
- **2024\*:** Design
- **2025-2026\*:** Construction

This project will design and implement curb extensions near four schools:

- Jefferson-Houston Elementary School
- Mount Vernon Community School
- Patrick Henry Elementary School
- Samuel W. Tucker Elementary School



Final locations will depend on project cost and the availability of funding.



Safe Routes to Schools

## CURB EXTENSIONS NEAR SCHOOLS

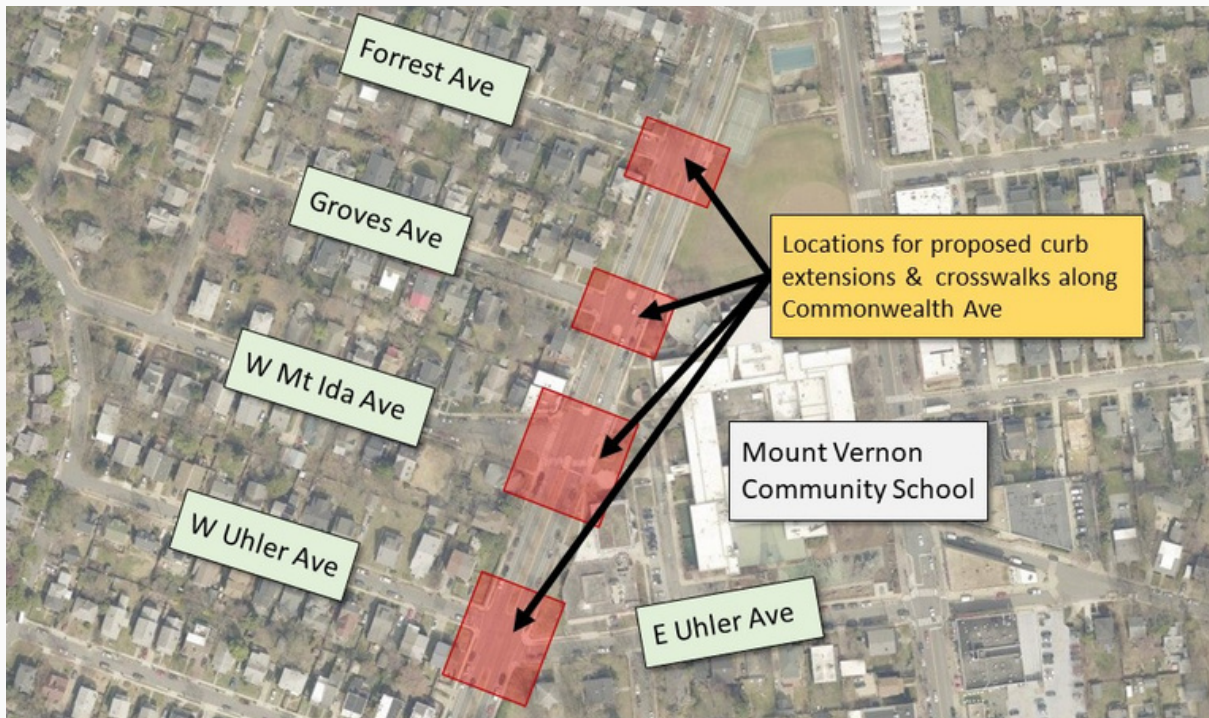
Mount Vernon  
Community School

# Mount Vernon Community School

The City proposes curb extensions at four intersections along Commonwealth Ave near Mount Vernon Community School. Curb extensions at these locations would create more crossings from the residential area west of Commonwealth Ave to the school, recreation center and playgrounds, the James M. Duncan Branch Library, and the retail corridor along Mt Vernon Ave.

These curb extensions were recommended in the 2017 SRTS Walk Audit Report for Mount Vernon Community School.

In total, 17 parking spaces are proposed to be removed along Commonwealth Ave and side streets. While efforts will be made to protect existing trees, some trees may need to be removed as part of this project. Removed trees will be replaced with new trees nearby.



## SHARE YOUR THOUGHTS



Scan the QR code or visit:  
[research.net/r/AlexandriaVA-srts-curbs](https://research.net/r/AlexandriaVA-srts-curbs)  
The City is accepting comments until August 27, 2023.

MOUNT VERNON  
COMMUNITY SCHOOL

Email Bryan Hayes, Complete Streets Coordinator,  
with questions: [bryan.hayes@alexandriava.gov](mailto:bryan.hayes@alexandriava.gov)

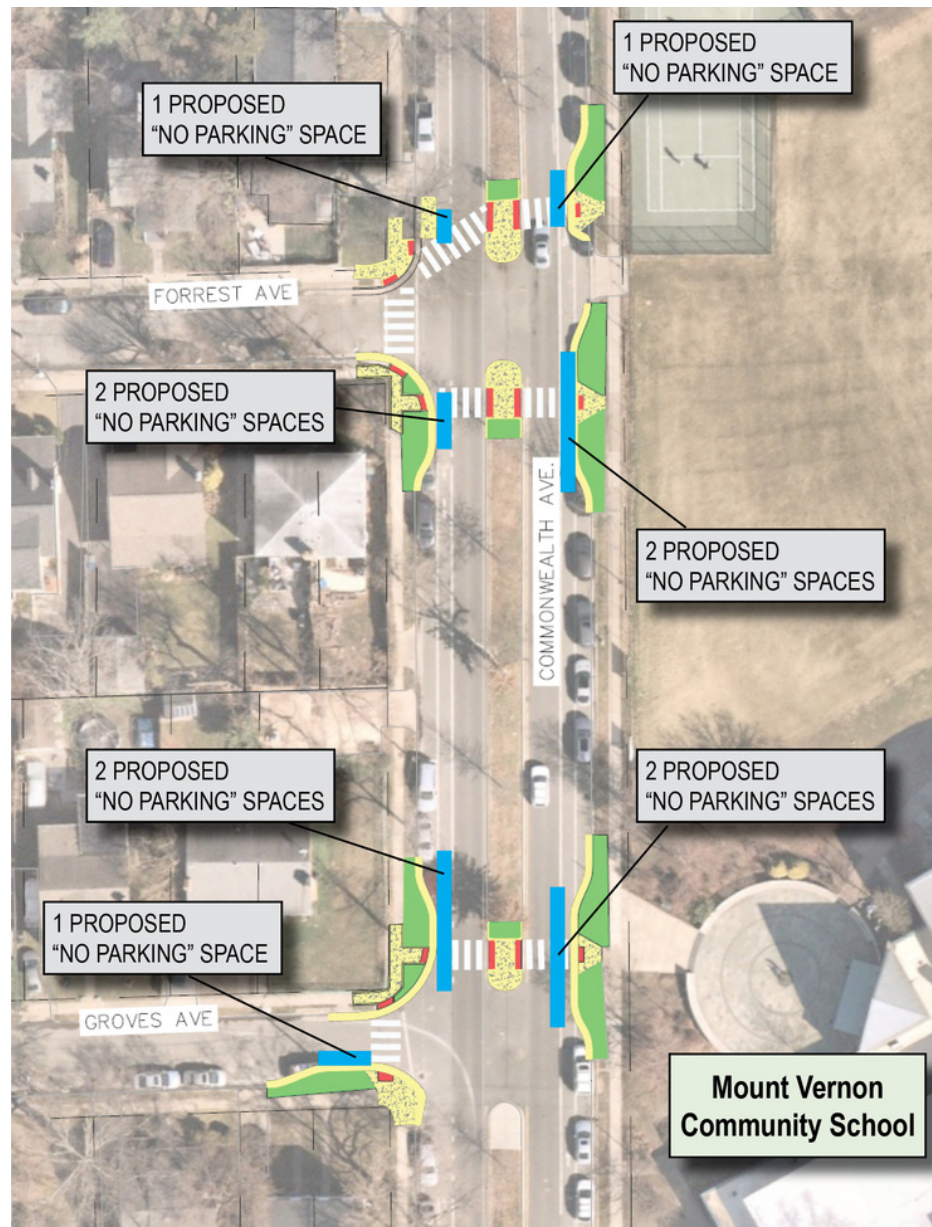
# Mount Vernon Community School

The City is proposing curb extensions at the intersections of Forrest Ave and Groves Ave with Commonwealth Ave.

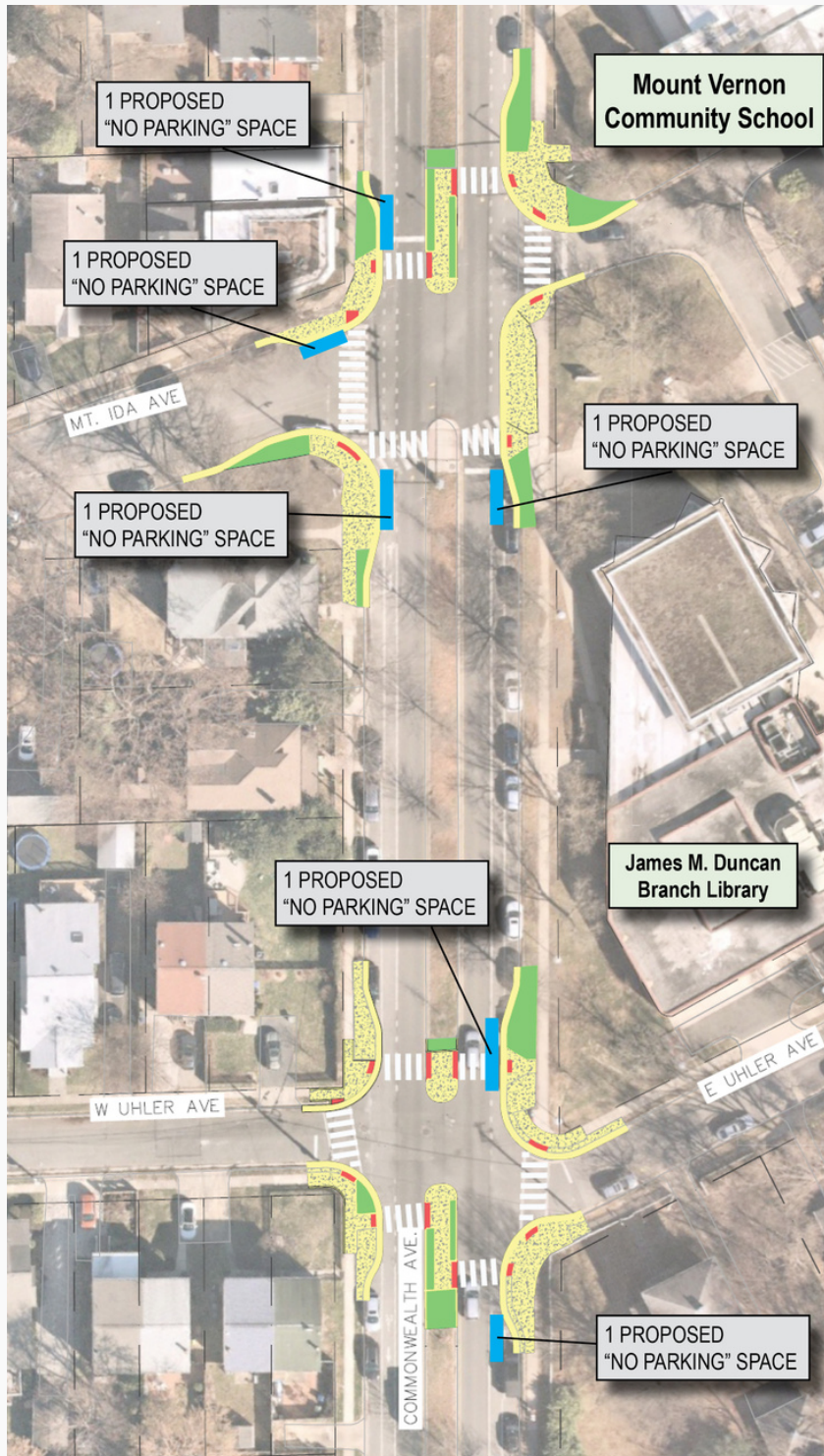
All curb extensions will include ADA ramps, high-visibility crosswalks, pedestrian refuges in the median, and crossing signs as appropriate.

The map to the right shows the location and draft concepts for the curb extensions. The map also highlights possible parking impacts.

These curb extensions were recommended in the 2017 SRTS Walk Audit Report for Mount Vernon Community School:  
[alexandriava.gov/go/2685#SchoolWalkAudits](http://alexandriava.gov/go/2685#SchoolWalkAudits)



# Mount Vernon Community School



The City is proposing curb extensions at the intersections of W Mt Ida Ave and Uhler Ave with Commonwealth Ave.

All curb extensions will include ADA ramps, high-visibility crosswalks, pedestrian refuges in the median, and crossing signs as appropriate.

The map to the right shows the location and draft concepts for the curb extension projects. The map also highlights possible parking impacts.

These curb extensions were recommended in the 2017 SRTS Walk Audit Report for Mount Vernon Community School:  
[alexandriava.gov/go/2685#SchoolWalkAudits](http://alexandriava.gov/go/2685#SchoolWalkAudits)