

Robinson Terminal North

Waterfront Commission Subcommittee

May 14, 2025

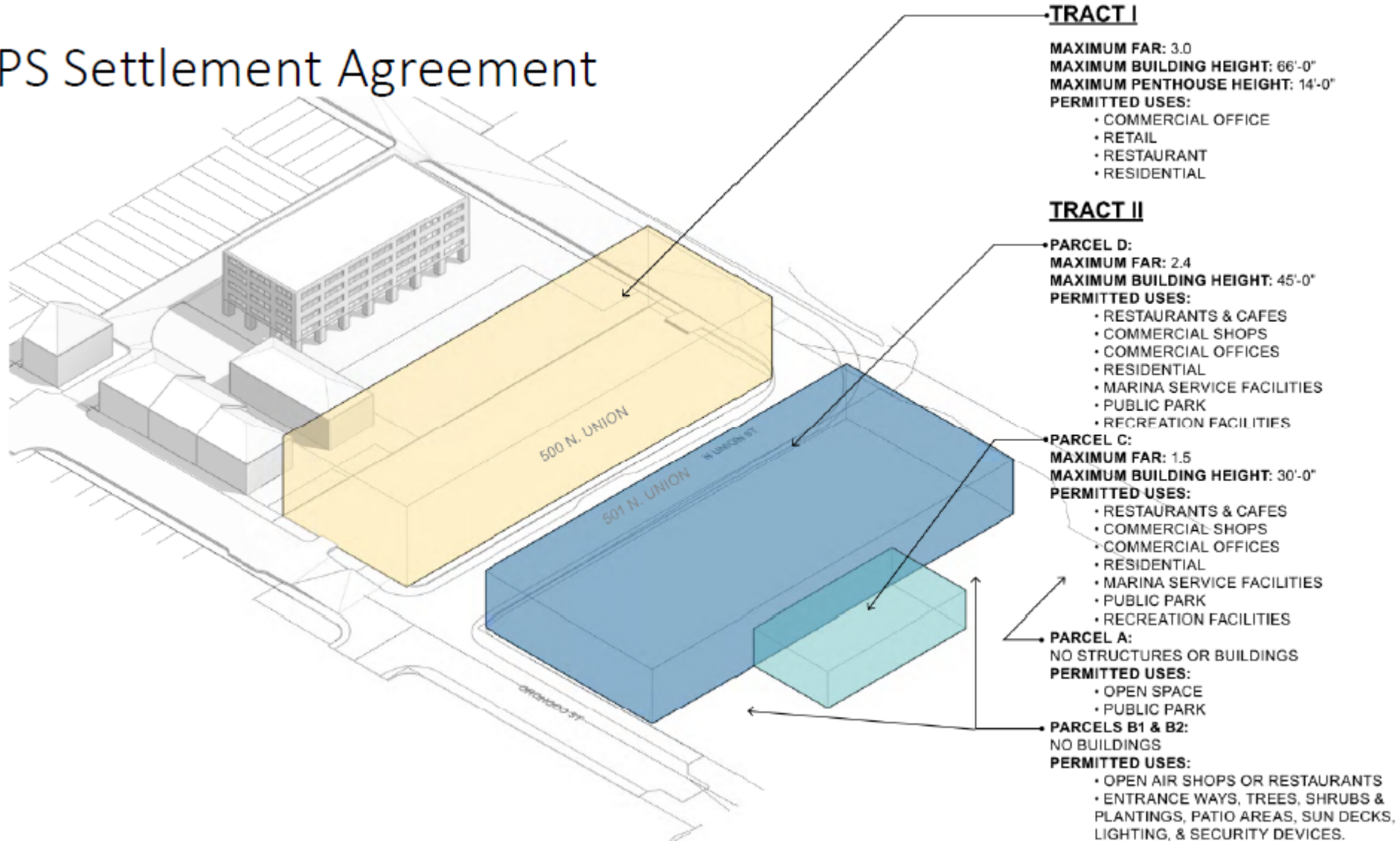


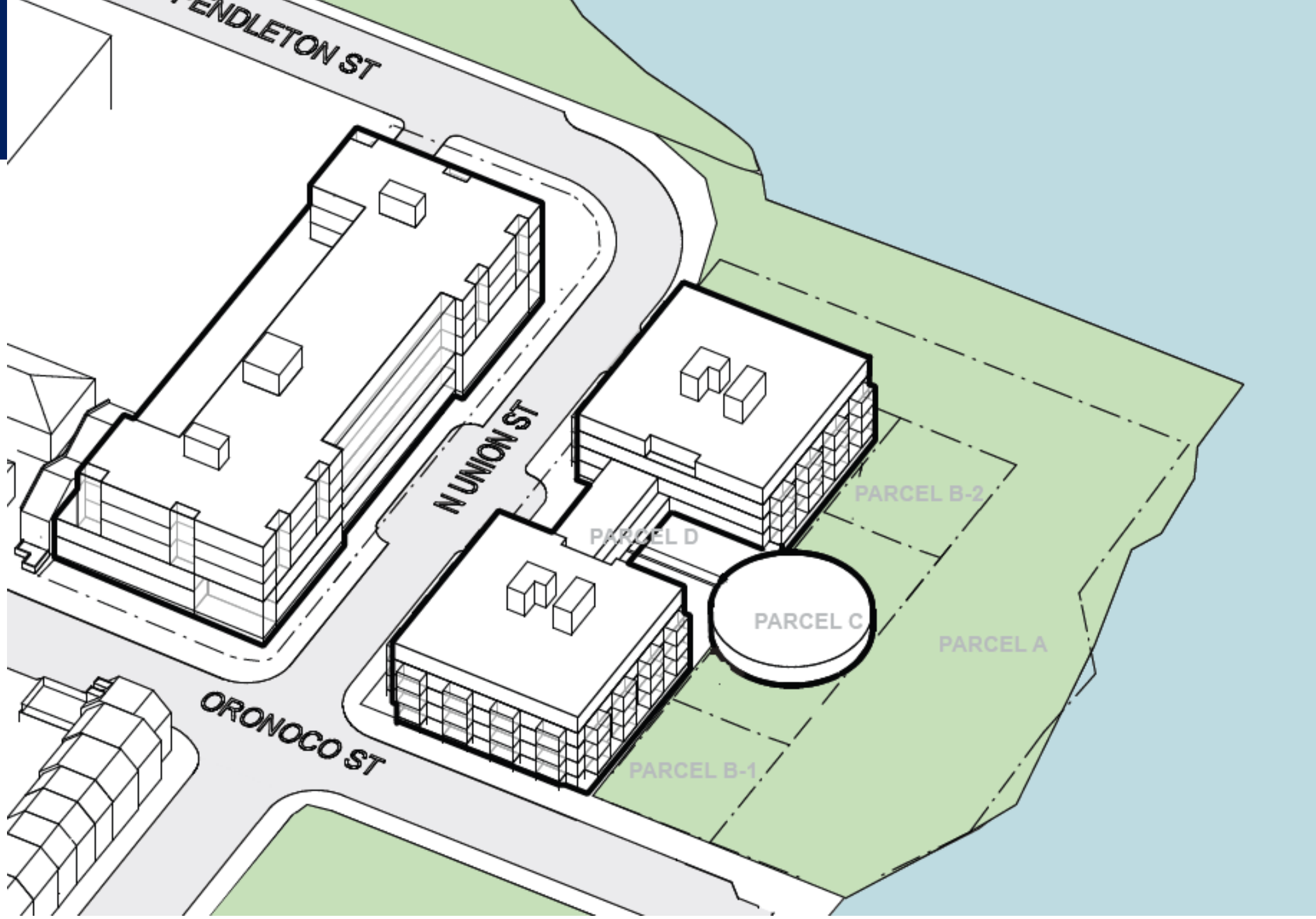
Agenda

- **Site Constraints**
- **Proposed Development**
- **Public Access**
- **Dedication and Easements**
- **Waterfront Contributions**

Site Constraints

NPS Settlement Agreement



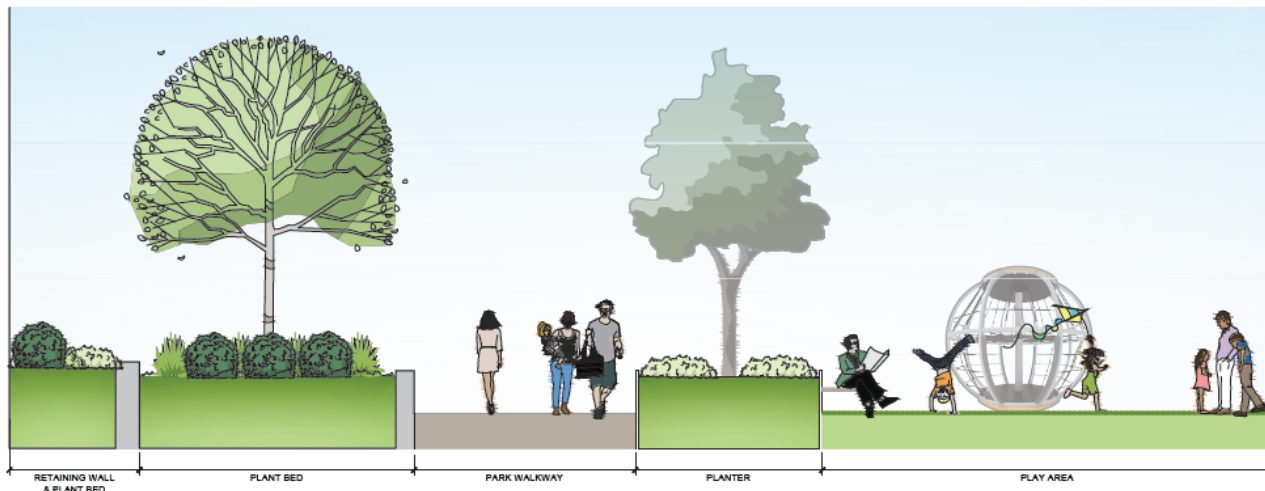


Proposed Building



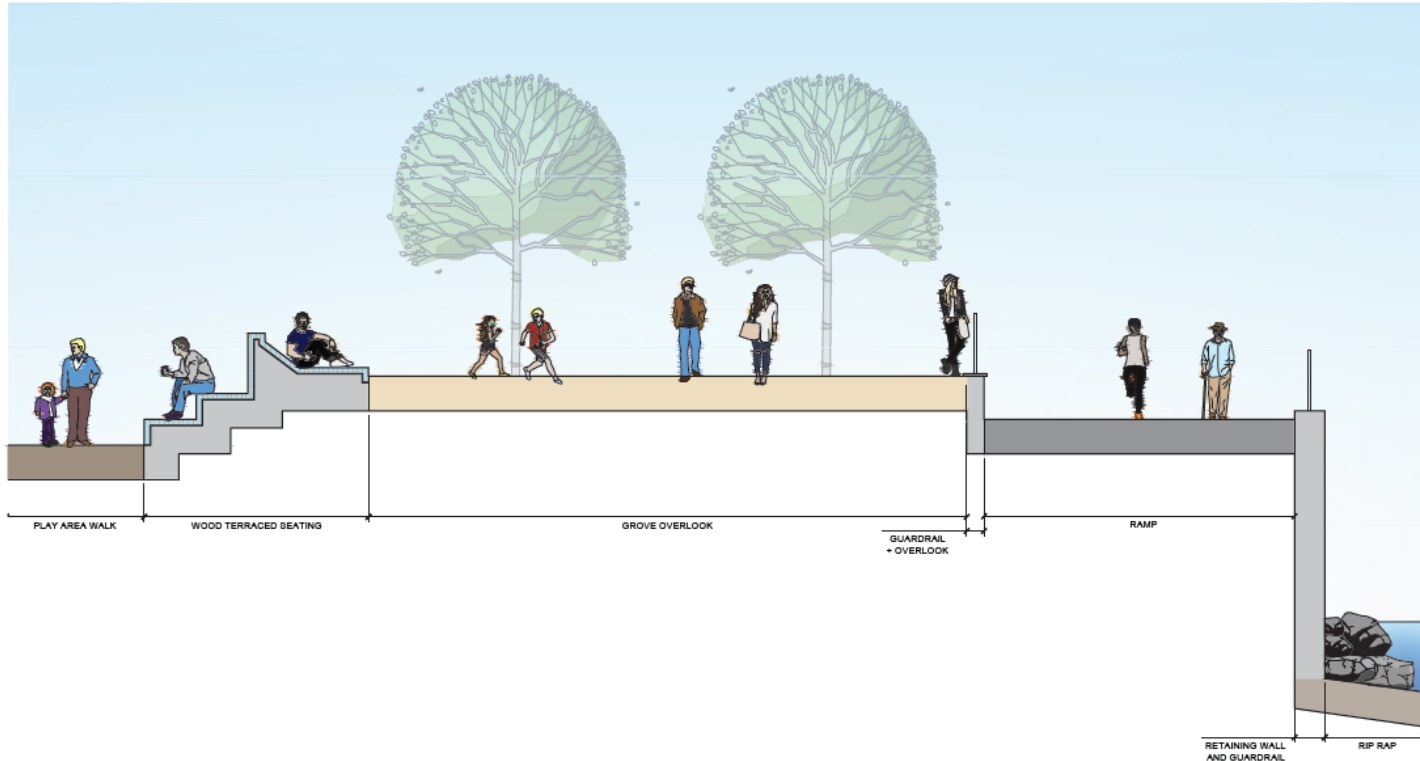
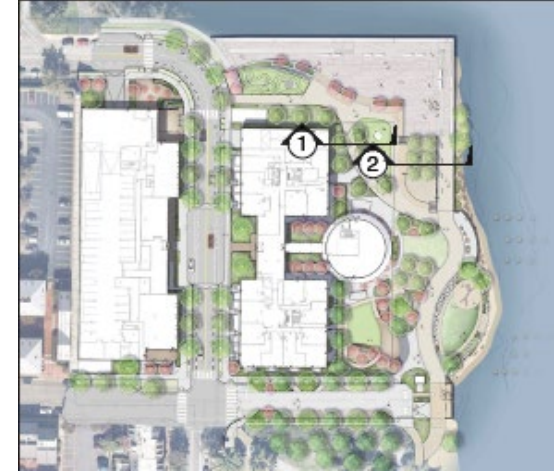
Site Plan





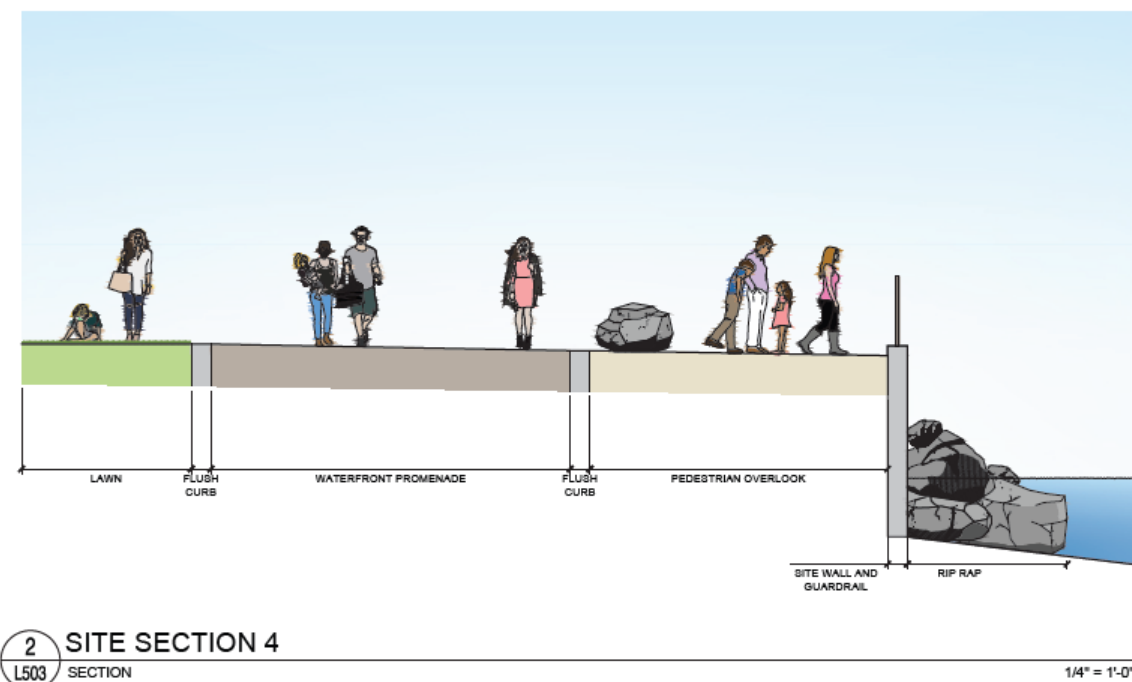
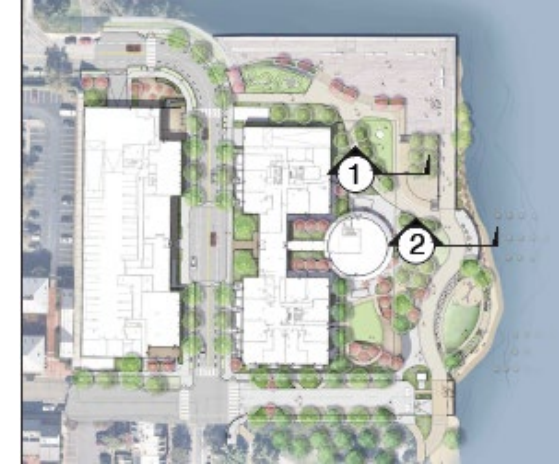
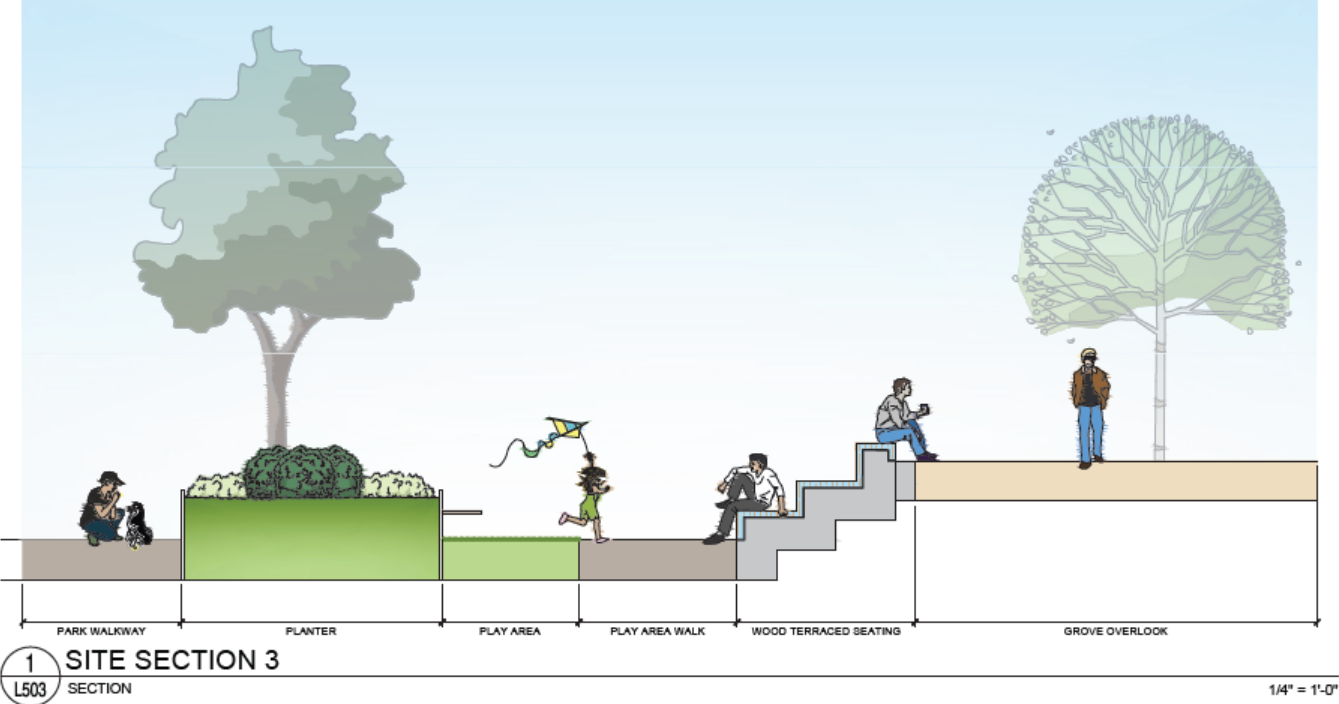
1 SITE SECTION 1
L502 SECTION

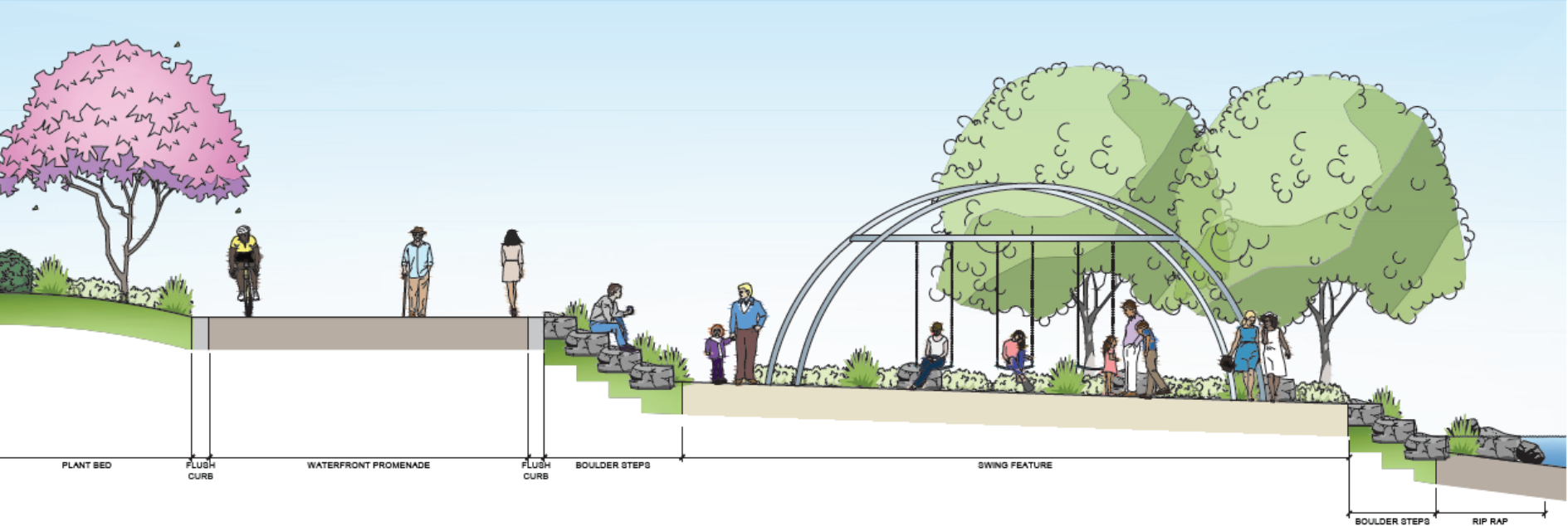
1/4" = 1'-0"



2 SITE SECTION 2
L502 SECTION

1/4" = 1'-0"

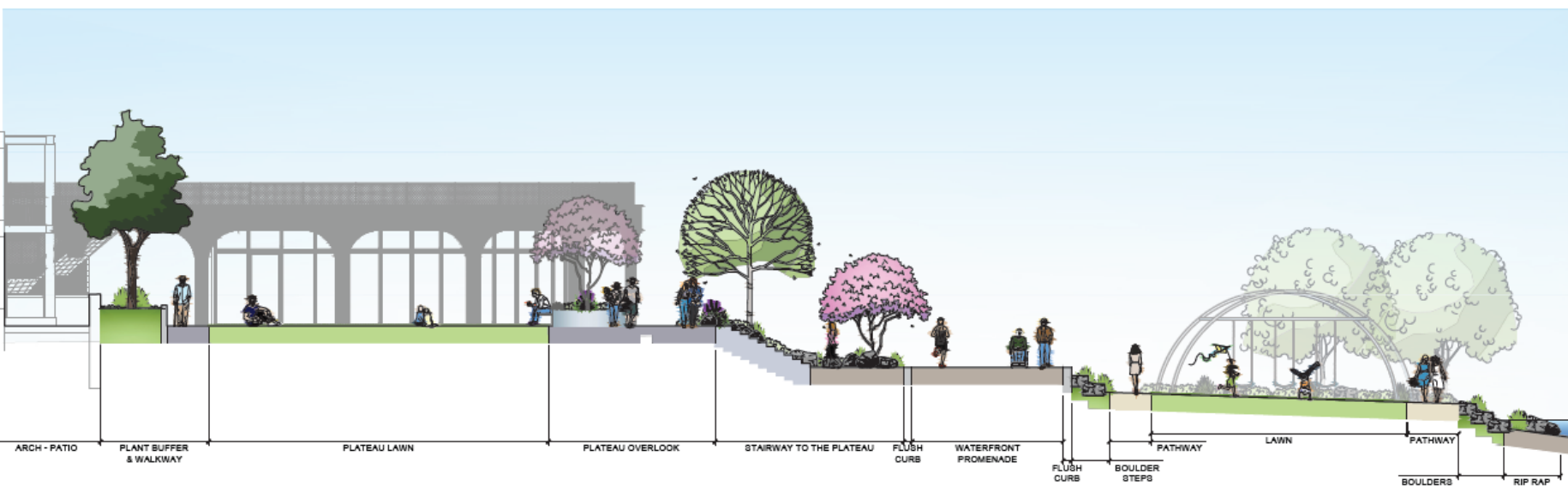
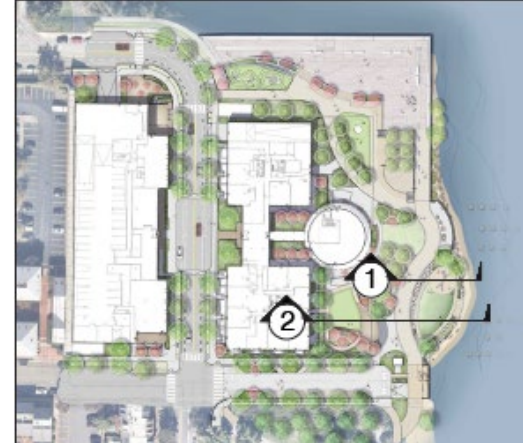




4 SITE SECTION 5

SECTION

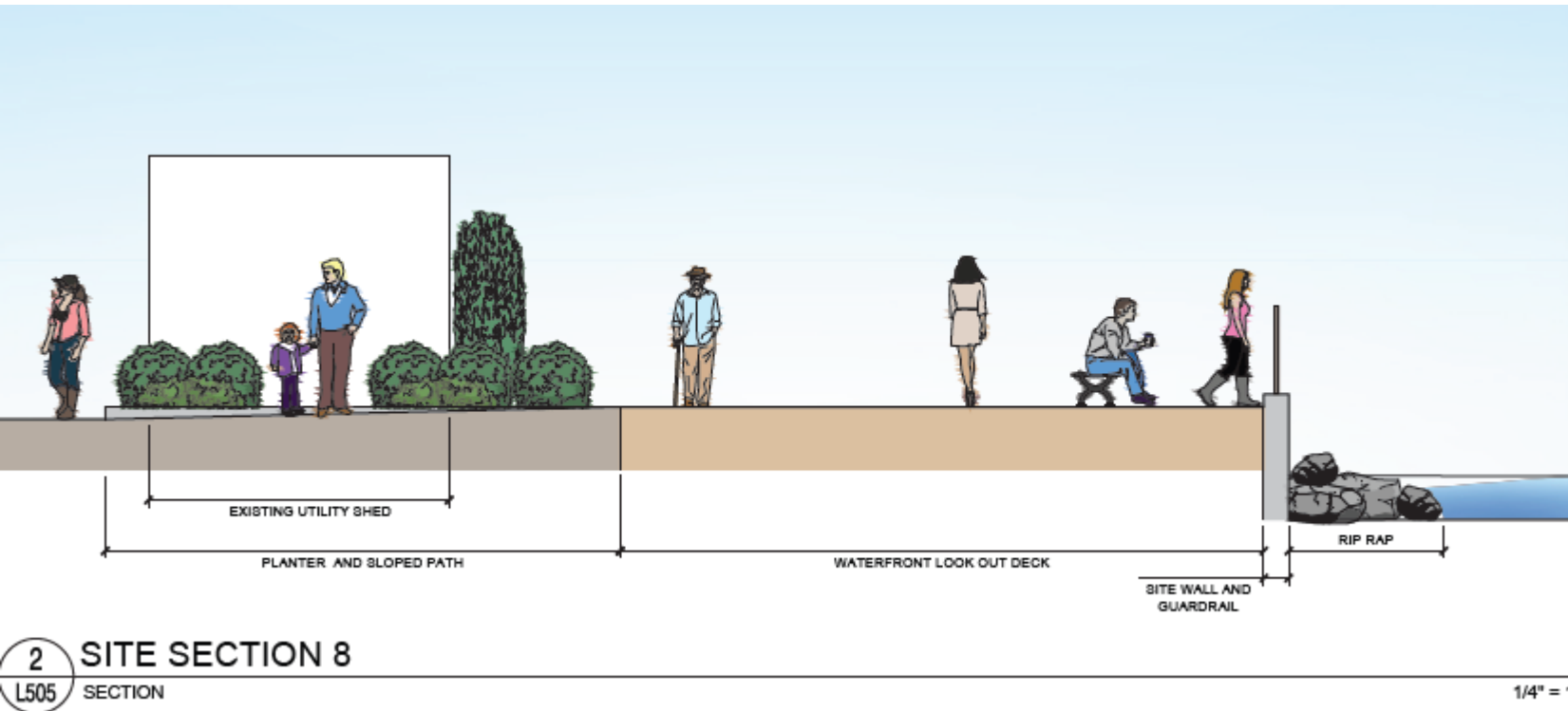
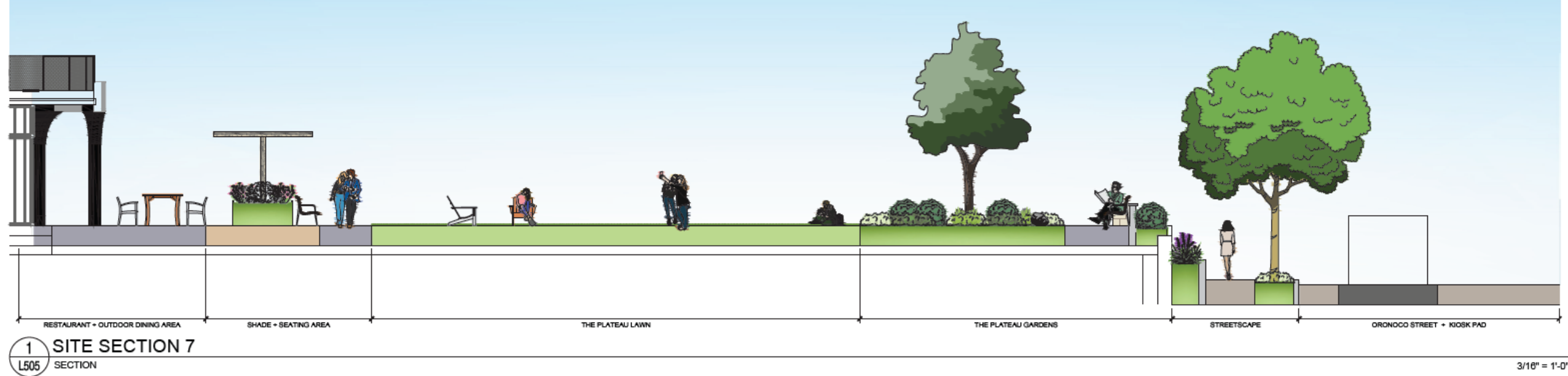
1/4" = 1'-0"



4 SITE SECTION 6

SECTION

1/8" = 1'-0"



Public Access Easements & Dedication

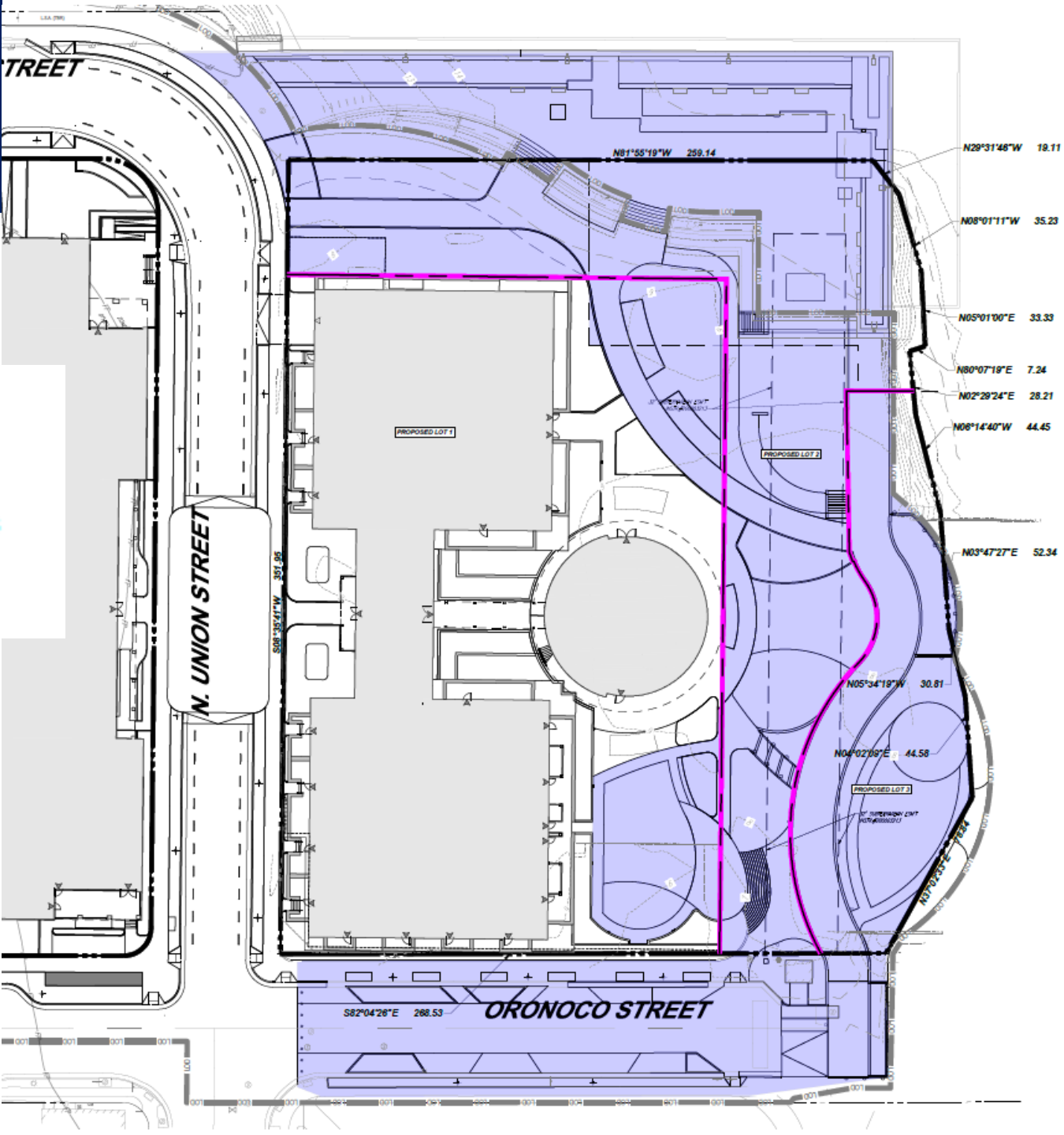
LEGEND



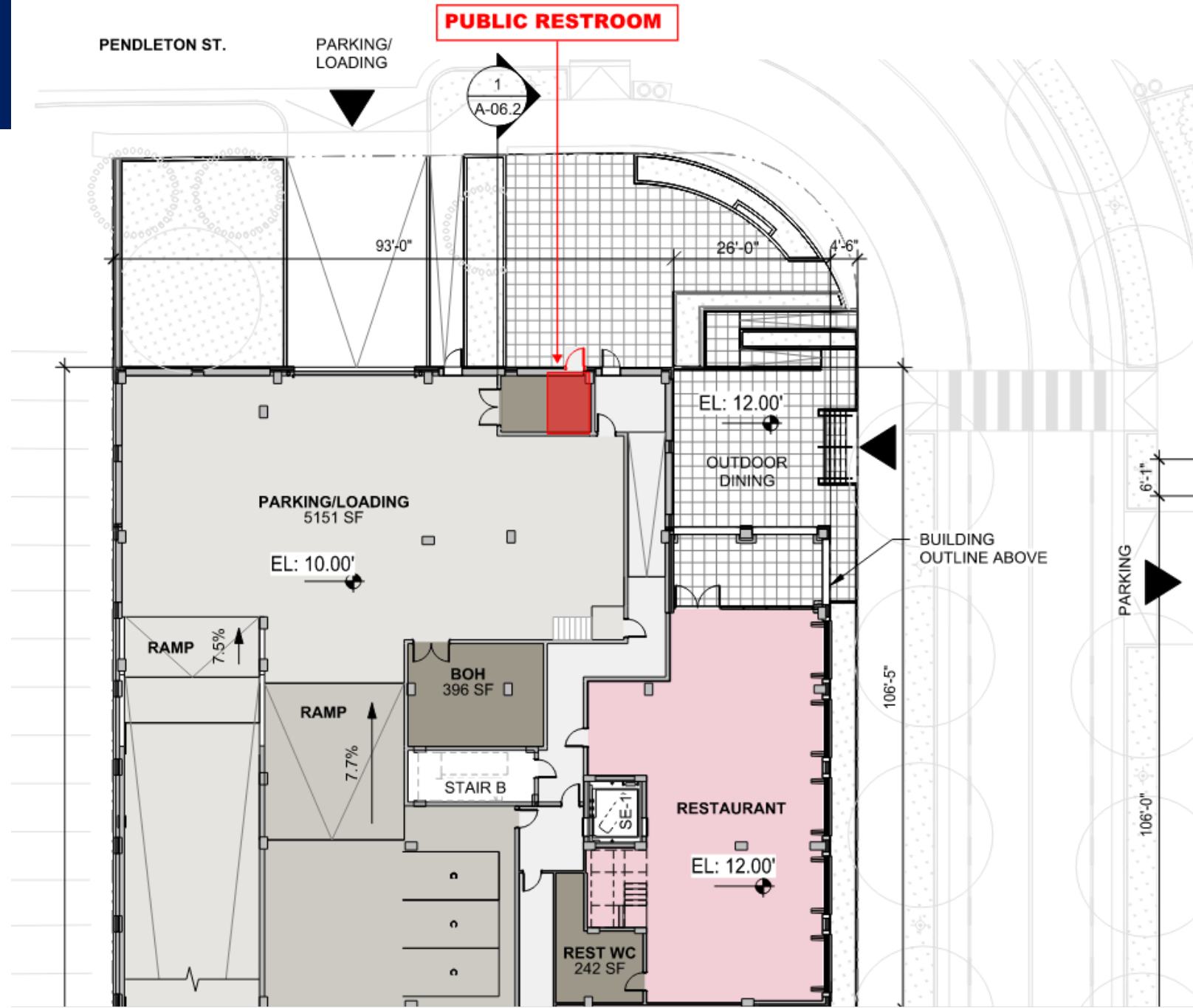
PROPOSED PROPERTY LINE



PUBLICLY ACCESSIBLE WATERFRONT LANDS
(VIA EASEMENT OR OWNERSHIP)



Public Restroom



Waterfront Contributions

- 1. Modernized SWM**
- 2. \$2.7M Improvements: paving, landscaping, seating, furnishing, 3 pavilions (w/utilities), West Point Park deck, railing & access; & Oronoco Street End improvements**
- 3. Maintenance**
 - a) Yearly contribution to remove debris**
 - b) Trash removal**
 - c) Maintain public restroom in West Building**
- 4. Standard City developer contributions for affordable housing, green building, art, & bike share**

Questions?

