



City of Alexandria

# Eugene Simpson Stadium Park Renovation

Construction Kickoff Meeting

Del Ray Citizens Association - June 11, 2025



# Agenda



1. Project Team Introductions
2. Park Renovation Planning
3. Park Renovation Goals
4. Anticipated Construction Schedule
5. Temporary Construction Impacts
6. Questions & Answers



# Project Team Introductions

## Project Sponsor: Recreation, Parks & Cultural Activities (RPCA)

- Responsible for:
  - Planning park improvements;
  - Securing project funding;
  - Programming, operation and maintenance of the park

### Point of Contact

Beth Znidersic (RPCA)

(703) 746.5492

Bethany.Znidersic@alexandriava.gov

## Project Manager: Project Implementation (DPI)

- Responsible for:
  - Technical design of the park per the approved plan
  - **Management of the contractor** & delivery of the park improvements within the construction schedule and budget

### Primary Point of Contact

Mitch Dillon (DPI)

(703) 746.4028

Mitch.Dillon@alexandriava.gov

## Construction Contractor: Nichols Contracting (NCI)

- Responsible for:
  - Physical construction of the park in a safe and expeditious manner;
  - Adhering to all City, State and Federal Codes, permits and requirements

### Point of Contact

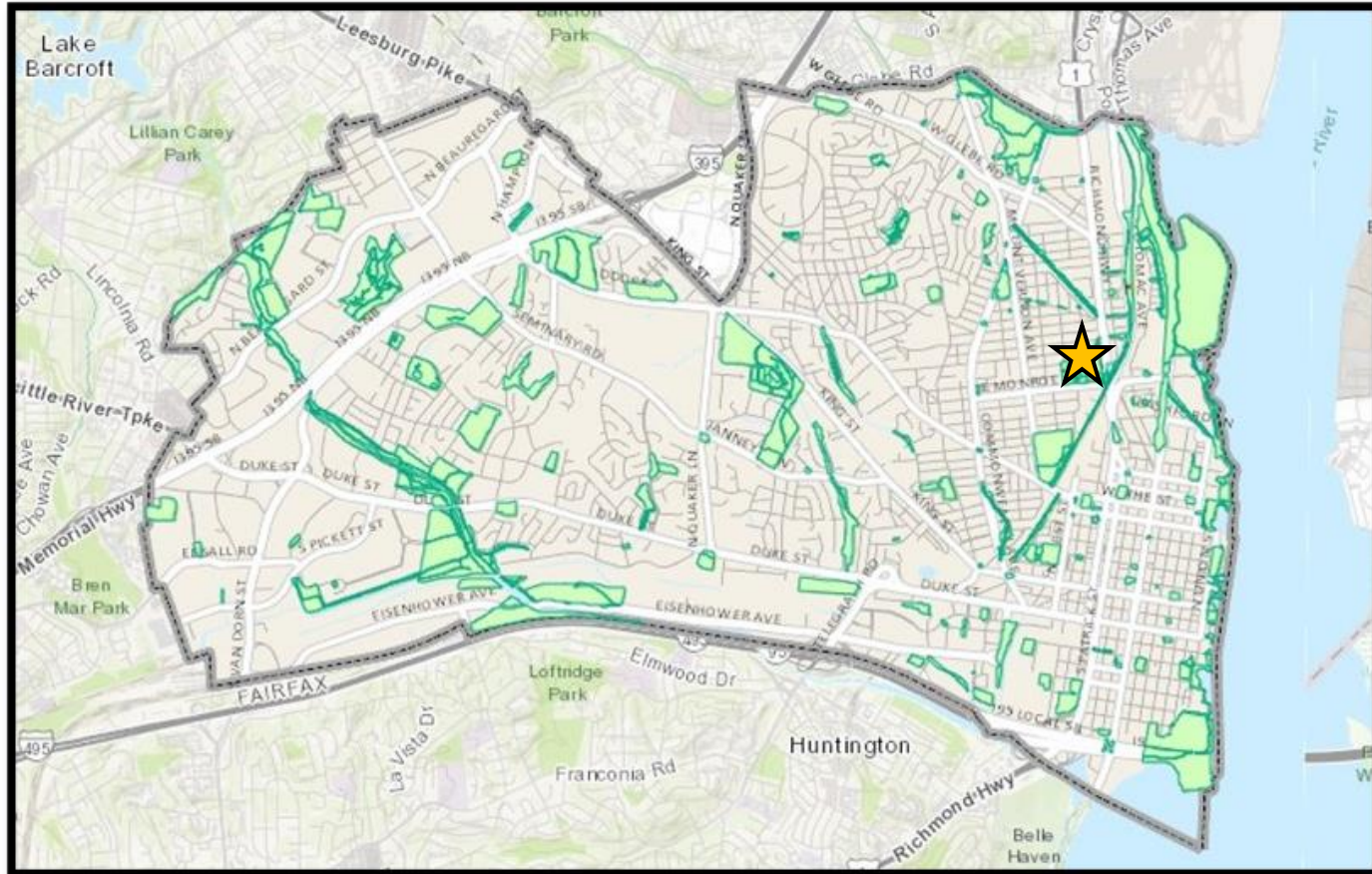
Please contact the City

Emergency contact information will be posted at the park entrance

# Introductions



# Project Planning



## Eugene Simpson Stadium Park: 426 E. Monroe Avenue

- Two natural turf diamond sports fields
- Two natural turf rectangular sports fields
- Two multi-use courts
- One basketball court
- One playground
- One dog park
- Multiple open play areas
- Gardens
- One bath house
- Paths, parking, and other supporting elements

## Project Location





# Project Planning

The basis of design for the Simpson Park Renovation Project is the 2014 Citywide Park Improvement Plan for the park.

- Plan development began in 2012
- Plan amendment in 2021
- Park design started in 2022
- Multiple public outreach efforts including
  - Public workshops
  - Online surveys
  - Community Meetings and Pop Ups
- Over 240 public survey responses and meeting attendees
- Park design was approved in June 2023

## 2014 Park Imp. Plan

What needs improvement in Simpson Park?



The highest priority is shown as the largest circle; the lowest priority is the smallest circle. Priorities are based on the number of responses to needed improvements and then weighted by how participants prioritized their answers



# Plan Implementation To Date

	Objective
2/3	Improve playground – Completed 2019
4	Create open use areas – Completed 2019
4	Create open use areas – Completed 2019
16	Improve the Dog Park – Completed 2024
17	Add onsite maintenance building – Completed 2018



## 2014 Park Plan

Open Use Areas



Athletic Fields



Entrance Plaza

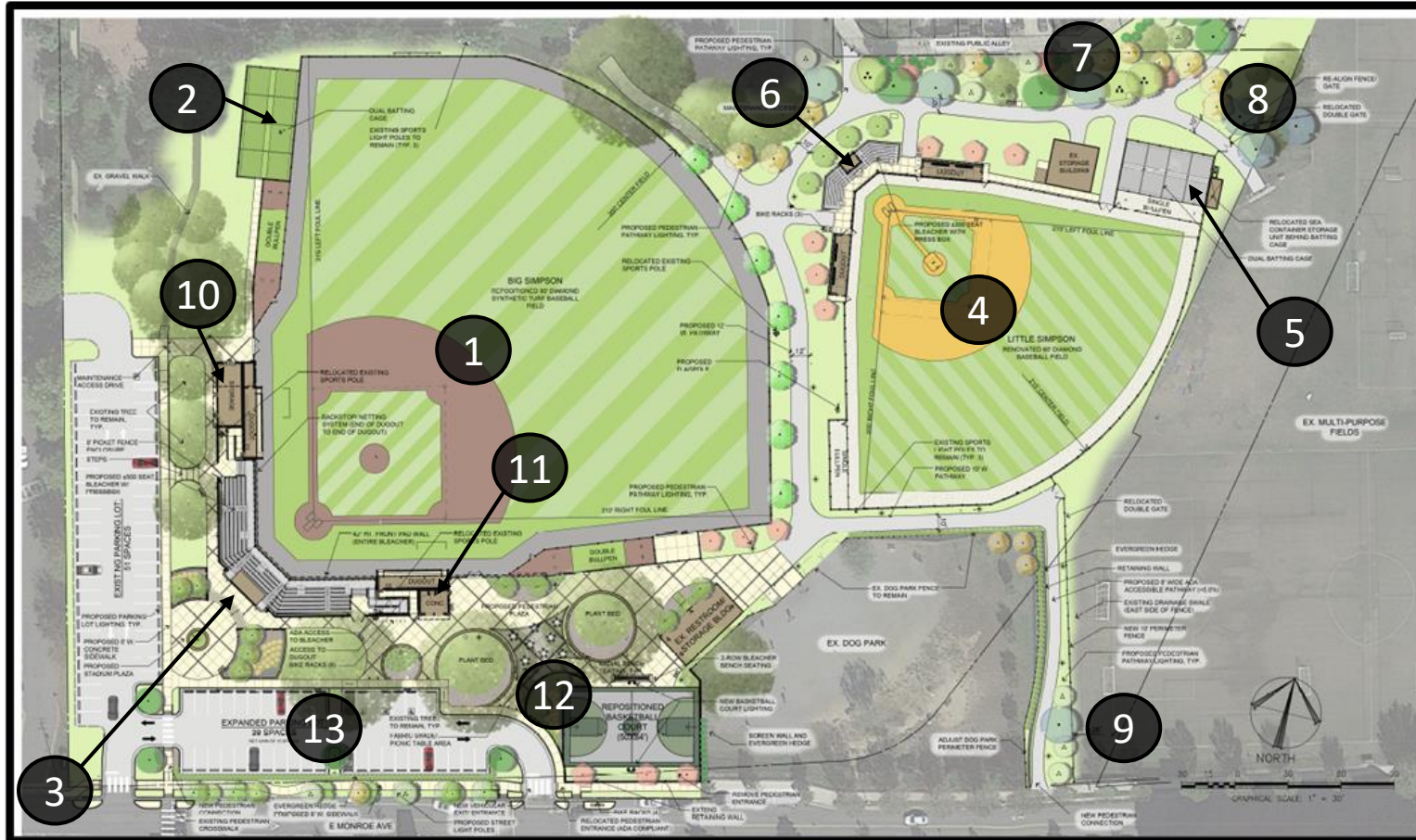


Dog Park





# Park Renovation & Goals



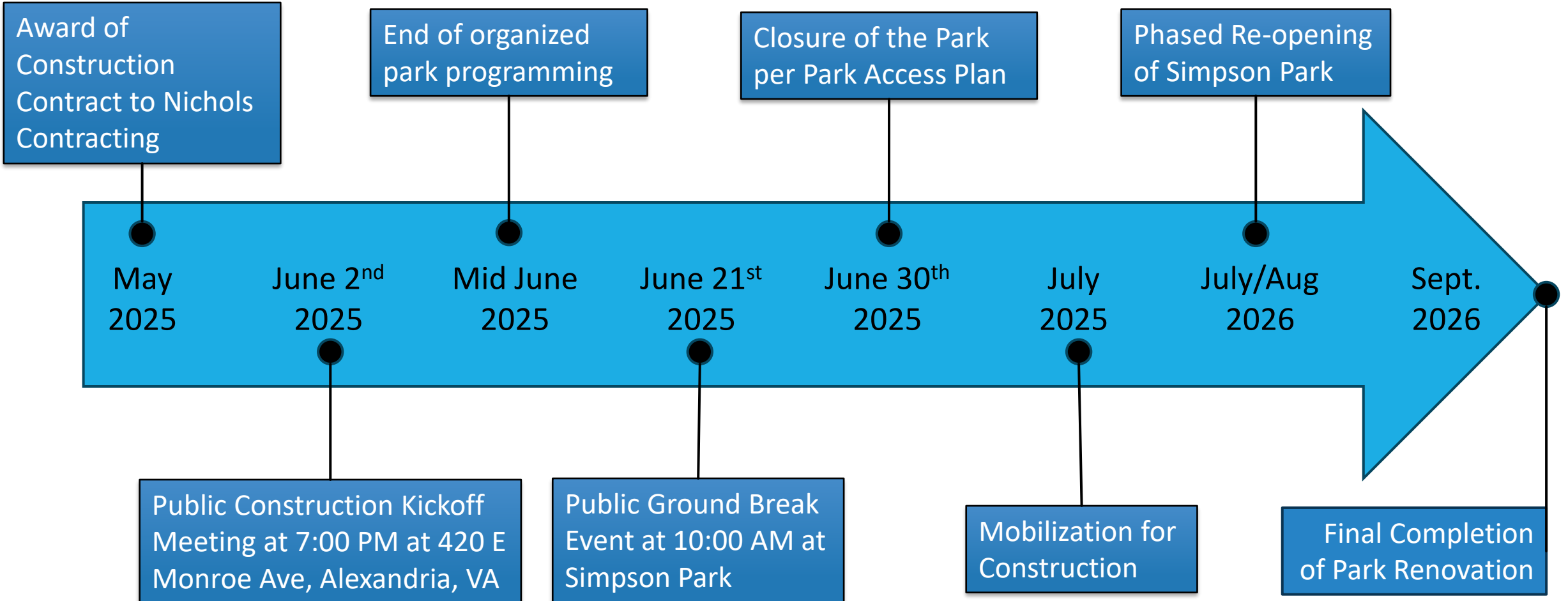
	Objective
1	Improve Big Simpson with synthetic turf
2	Add batting cages at Big Simpson
3	Install new bleachers & press box
4	Improve Little Simpson's natural turf
5	Add Batting cages at Little Simpson
6	Install new bleachers & press box
7	Create native vegetative buffer
8	Expand hardscape trail to E. Bellefonte
9	Create ADA access along Dog Park
10	Provide new equipment storage
11	Provide concessions booth
12	Create a new shaded picnic area
13	Expand the parking lot

Rendering





# Construction Schedule



Schedule





# Temporary Impacts: Noise



**Construction operations will generally be limited to Monday through Friday from 7:00 AM to 6:00 PM. If weekend work occurs, it will be limited to Saturday 9:00 AM to 6:00 PM.**

Construction operations will comply with all local, state and federal codes, permits and regulations.

Primary Point of Contact

Mitch Dillon (DPI)

(703) 746.4028

[Mitch.Dillon@alexandriava.gov](mailto:Mitch.Dillon@alexandriava.gov)

Code Administration

(703) 746.4200

## Construction Noise



# Temporary Impacts: Access



\* Temporary lane shifts & sidewalk detours on E. Monroe Avenue

## Public Access

PARK CLOSURES & ACCESS PLAN	
Attraction	Status
Big Simpson	Closed
Little Simpson	Closed
Basketball Court	Closed
Parking Lots	Closed
Kettle Park	Partially Closed
Bathrooms	Closed
Dog Park	<b>Open</b> Temporary Access from East Monroe Ave.
Rectangular Fields	<b>Open</b> Temporary Access from North & South Gates
Playground	<b>Open</b>
Multipurpose Courts	<b>Open</b>





# Temporary Impacts: Tree Removals

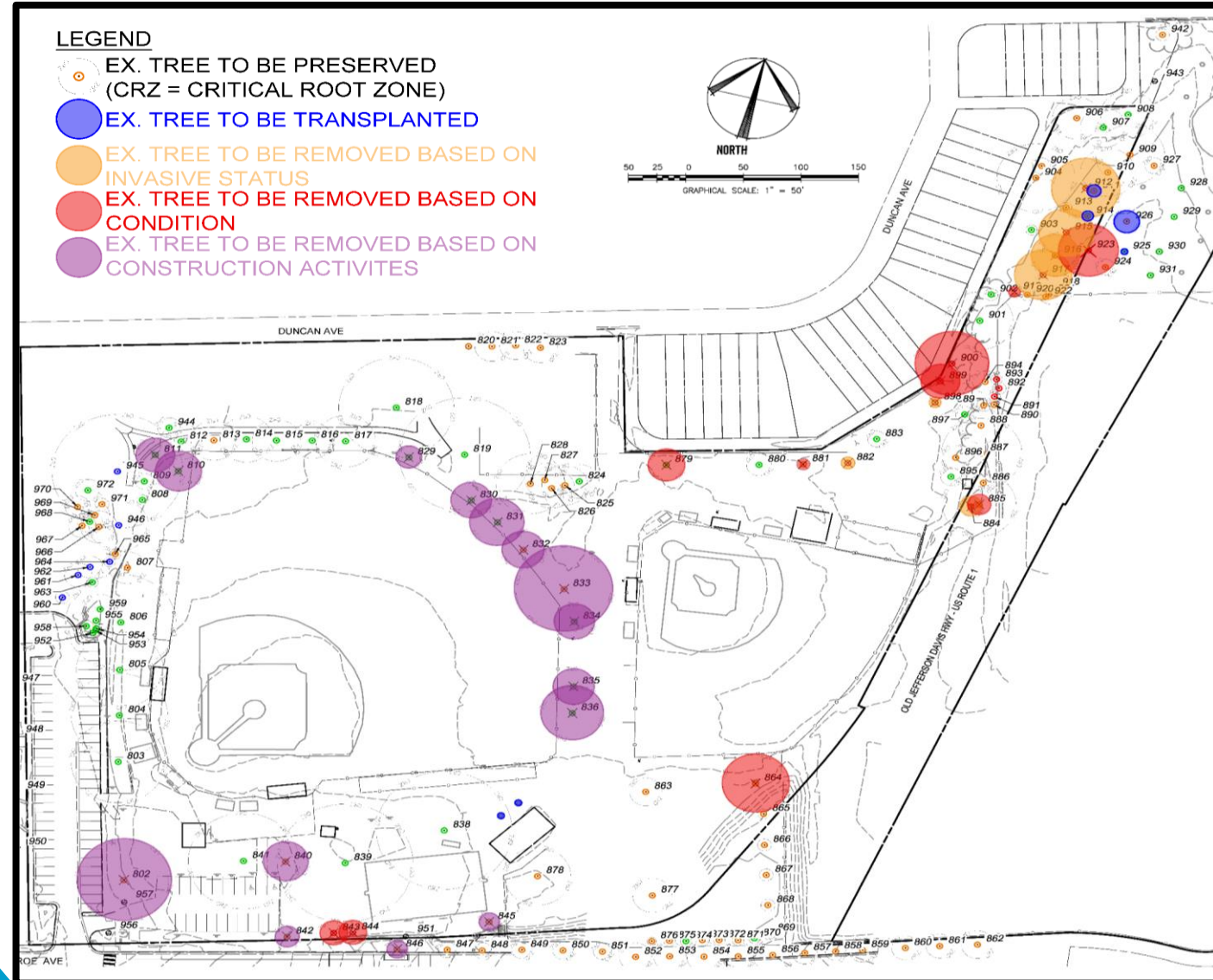
**Limited tree removals will be required to support the park improvements.**

Adds about 550 native to Virginia trees and shrubs to the park

Roughly doubles onsite canopy within the construction limits and increases bio-diversity

Retain and protect large onsite trees near park plaza with creative design to limit impacts and utilize protective matting

## Tree Removals





# Temporary Impacts: Programming



**Organized programming of Simpson Park within the construction zone will be temporarily paused starting June 15, 2025.**

Consult your sports organization for more information

Programming at Simpson Park within the construction zone is planned to resume in Fall of 2026

## Programming





# Questions & Answers

## Point of Contact

Beth Znidersic (RPCA)

(703) 746.5492

[Bethany.Znidersic@alexandriava.gov](mailto:Bethany.Znidersic@alexandriava.gov)

## Primary Point of Contact

Mitch Dillon (DPI)

(703) 746.4028

[Mitch.Dillon@alexandriava.gov](mailto:Mitch.Dillon@alexandriava.gov)

