



CITY OF ALEXANDRIA
Recreation, Parks & Cultural Activities

Schuyler Hamilton Jones Skateboard Park

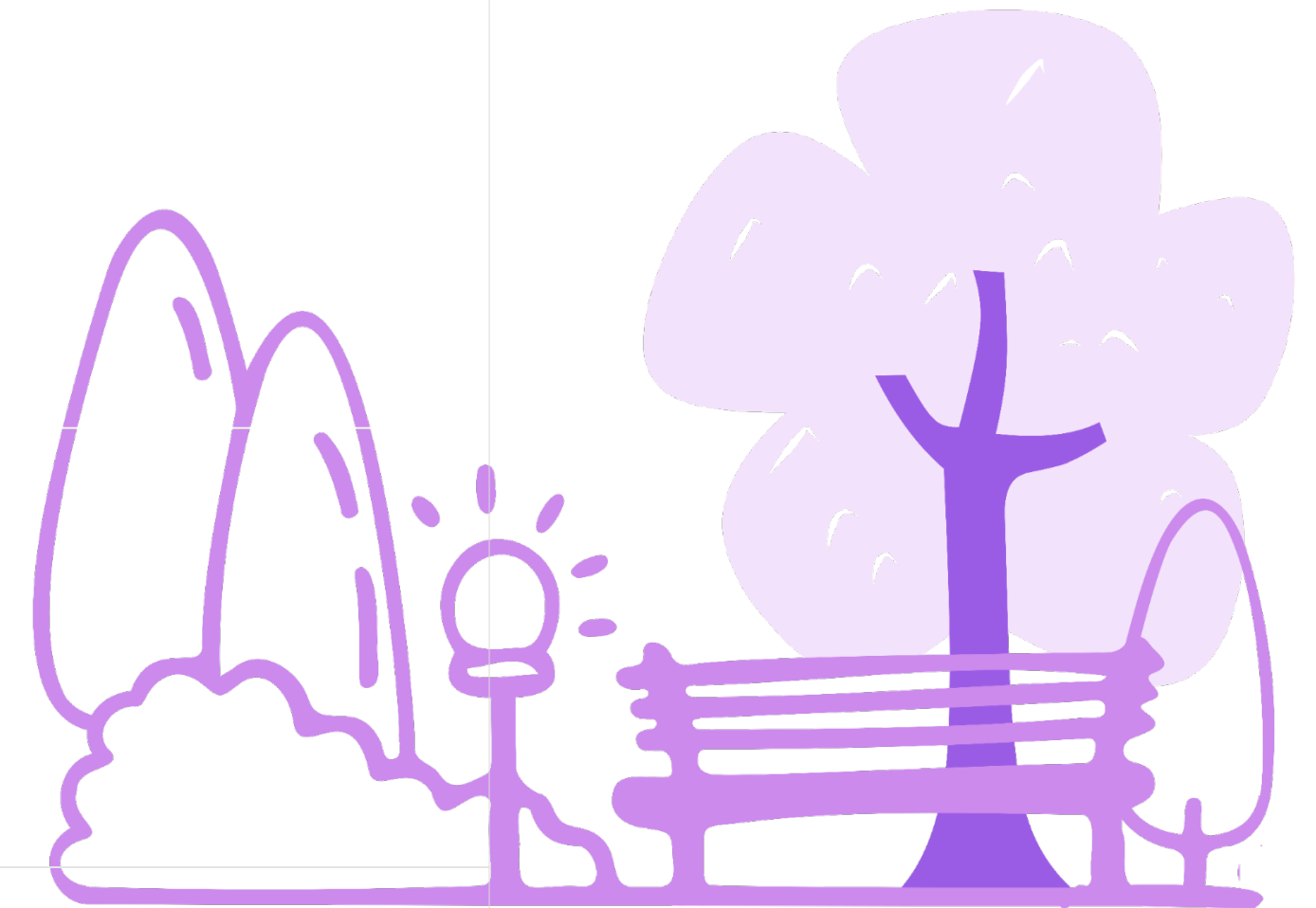
Virtual Community Engagement | May 14, 2025





Agenda

1. Summary/Project Goals
2. March - Community Comments Received
3. Design Criteria Priorities
4. Funding
5. PARKnership
6. Duke Street Land Use Plan
7. Next Steps
8. Q+A





Summary + Project Goals

- Opened in 2005, the Schuyler Hamilton Jones Skatepark is the City's first and only skatepark. It was developed with community support and shares a 4.3-acre lot with Luckett Field & Stadium.
- The skatepark spans 12,000 square feet and includes various modular equipment, such as jumps, pipes, rails, wedges, and boxes.
- The park is named in memory of Schuyler Hamilton Jones, known as Sky and Shaggy, a 16-year-old T.C. Williams High School student who passed away in 2003.
- Seeking community feedback to plan future improvements and present Final Design Criteria at the Park and Recreation Commission.

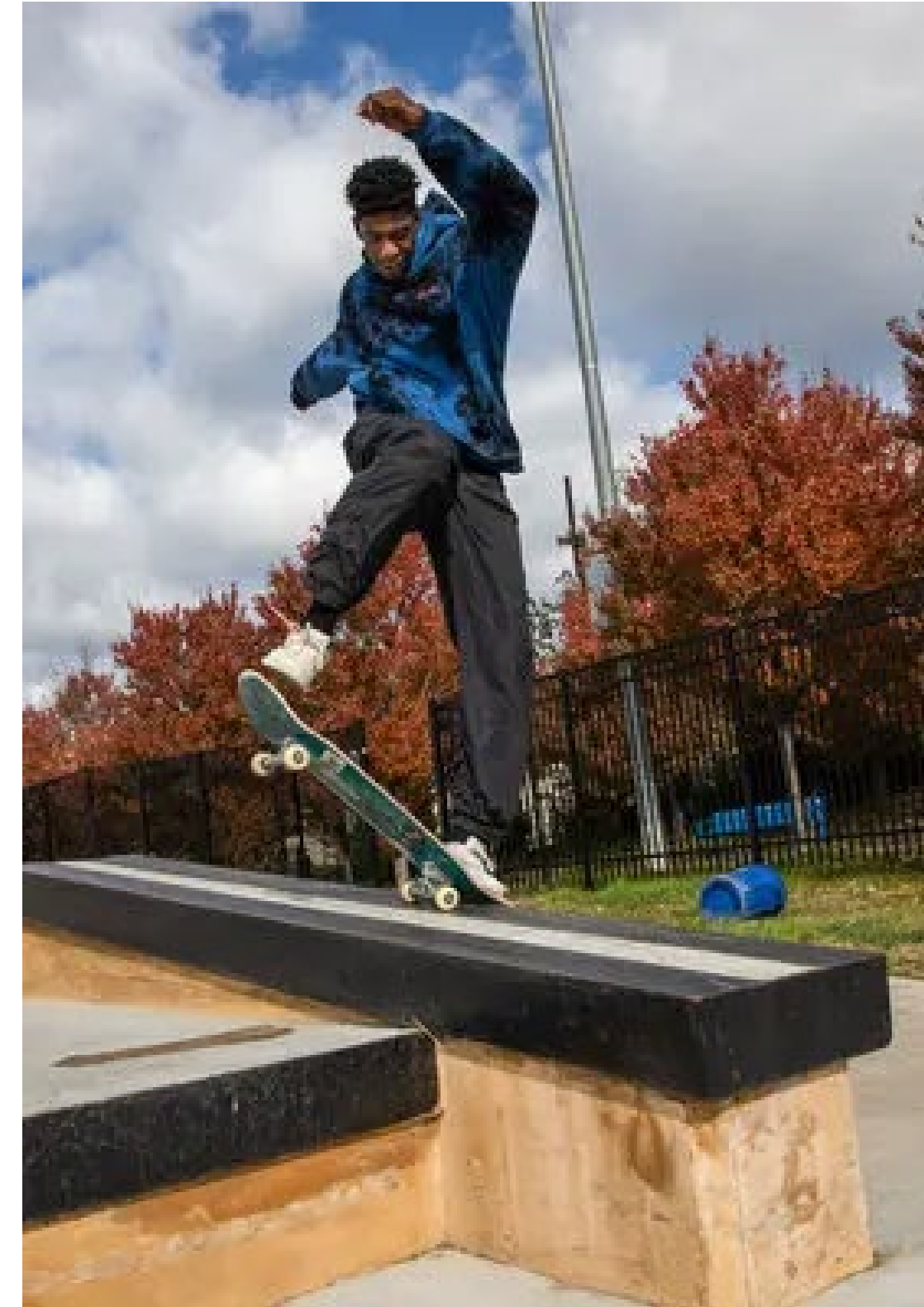




March - Community Comments

Project Web Site/Pop - up

- Needs to be remodeled.
- Please get famous skateboarder Tony Hawk to help remodel the park.
- Overall, a great park for all different levels of riders with a variety of fun obstacles; however, it is slightly outdated and not as good as many of the new parks that are being built.





Key Priority Design Criteria

Inclusive & Multi-Level Design

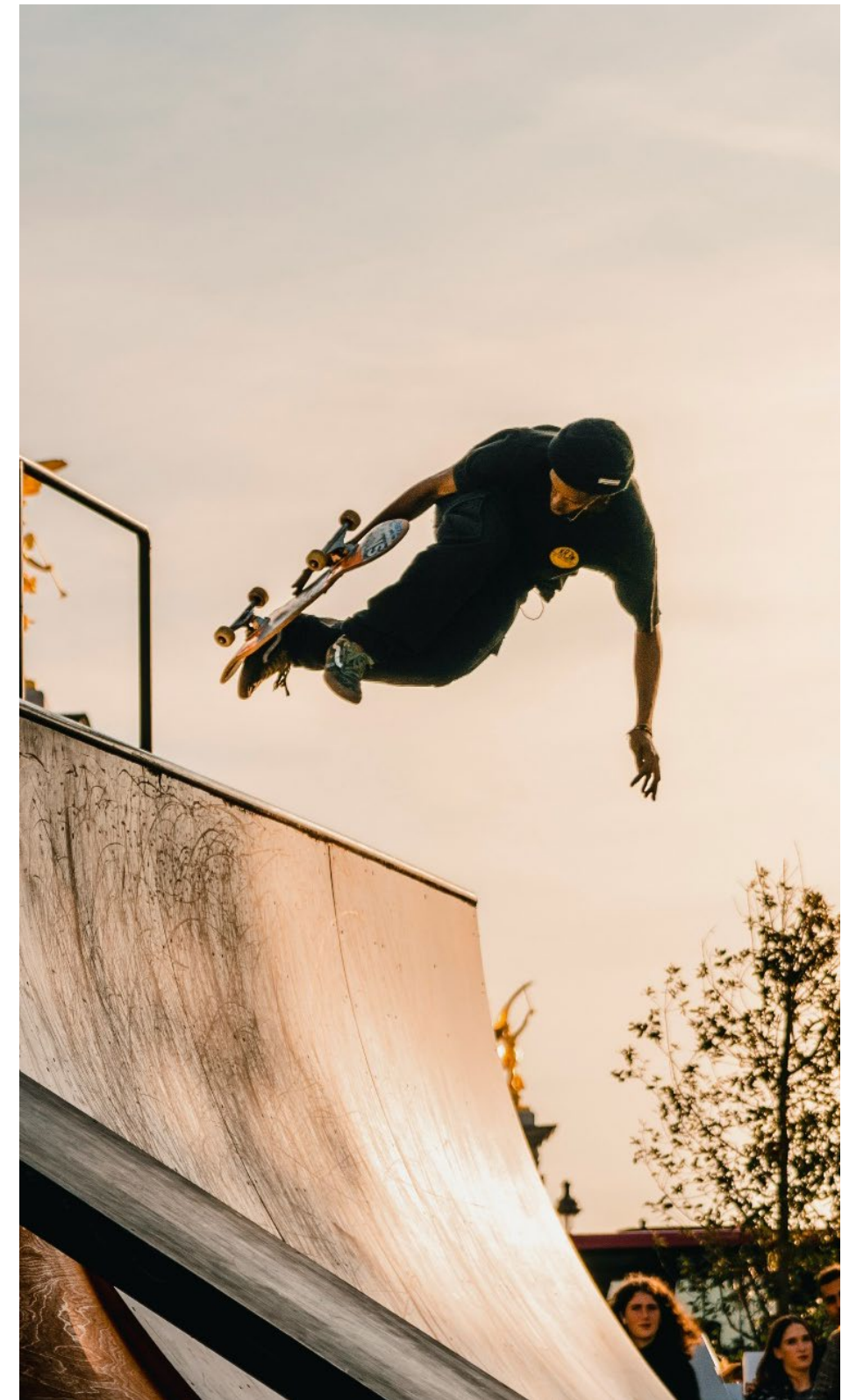
- Features for beginners, intermediate, and advanced skaters
- Separate areas for different skill levels to ensure safety
- Accessible design for adaptive skateboarding (wider ramps, smooth transitions)

Learning & Social Spaces

- Beginner-friendly instructional areas
- Signage with trick names, tips, and skatepark etiquette
- Community boards for local skate events and meet-ups

Durability & Maintenance

- High-quality concrete for longevity and smoothness
- Easy maintenance for future repairs





Medium Design Criteria

Diverse Structures + Elements

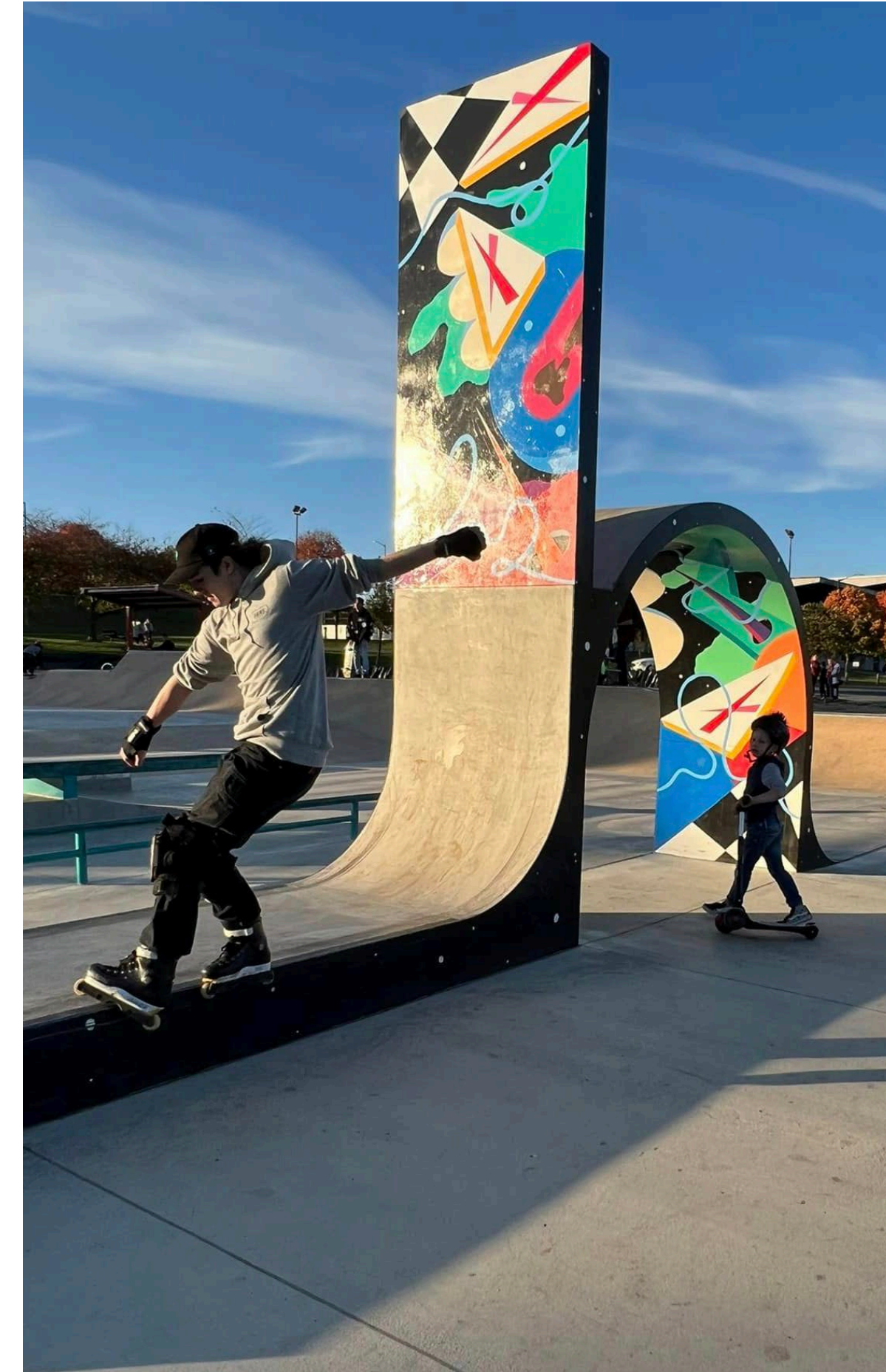
- Street Section: Rails, ledges, stair sets, hubbas, manual pads
- Transition Section: halfpipes, quarterpipes, vertical walls

Good Flow & Connectivity

- Smooth transitions between different areas
- Avoid dead zones—keep the park dynamic and engaging
- Design for continuous movement

Safety Considerations

- Smooth edges on obstacles to minimize injuries
- Proper drainage to prevent puddles
- High-quality, smooth concrete to reduce friction and injuries
- Clearly marked areas for different skill levels





Low Priority Design Criteria

Aesthetic & Community Integration

- Permanent or temporary public art, seasonal arts programming, and local cultural influences
- Seating areas and shade for spectators and families
- Night lighting for extended hours
- Green spaces, trees, and eco-friendly design

Skate-Friendly Surroundings

- Connection to bike paths or public transportation

Adaptability for Events

- Areas for spectators to view
- Electrical outlets
- Adequate signage





Funding

- Funding is **not currently approved** for the complete renovation of the park.
- RPCA is **exploring options for quick, low, or no-cost interim improvements.**
- **High-level estimates based on final criteria** will be created and used to inform future budget requests.



PARKnership



Community Matching Fund Overview

- Supports community groups in enhancing parks, gardens, trails, and recreation facilities through funding partnerships.
- Eligible projects include athletic field upgrades, park beautification, community gardens, playground renovations, and environmental initiatives.

Who Can Apply & Requirements

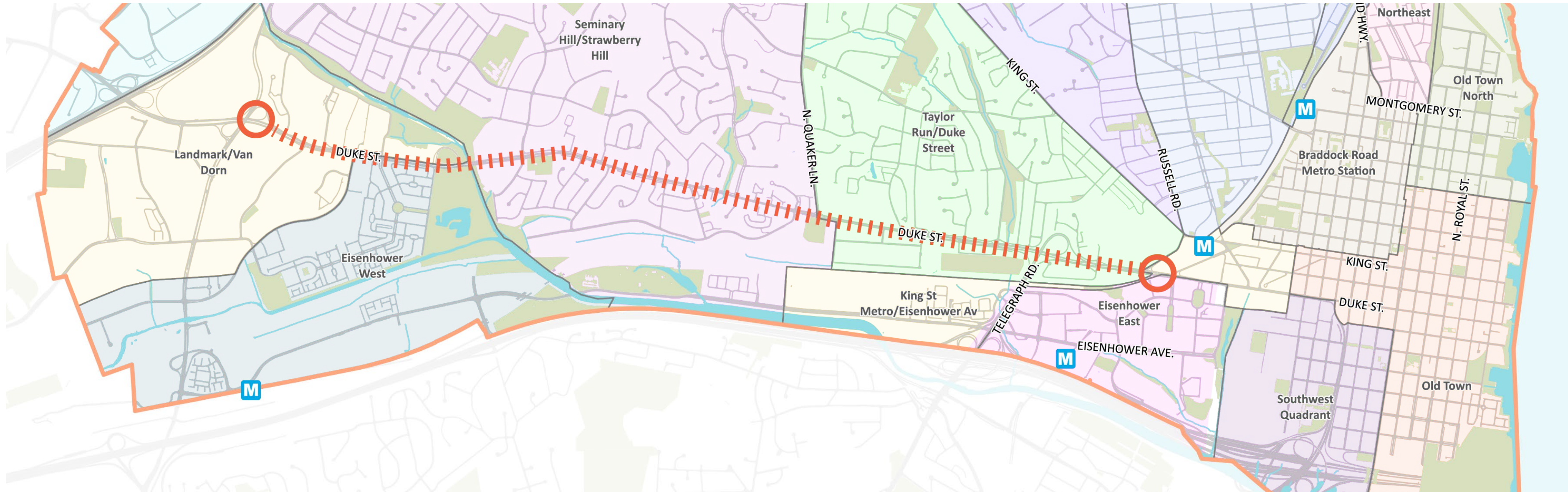
- Open to community groups in Alexandria with projects in City-owned parks or facilities.
- Must demonstrate how the project builds a stronger, healthier community.
- Groups must raise matching funds within one year before implementation

Funding & Eligible Contributions

- Awards range from \$5,000 to \$50,000, covering up to 50% of project costs.
- Matching funds can include cash donations, grants (non-city funded), in-kind labor, and professional services (up to 15% of the budget).
- All volunteer hours and contributions must be documented for City approval.

Duke Street Land Use Plan

Up-to-date Information: <https://www.alexandriava.gov/DukeStreetPlan>



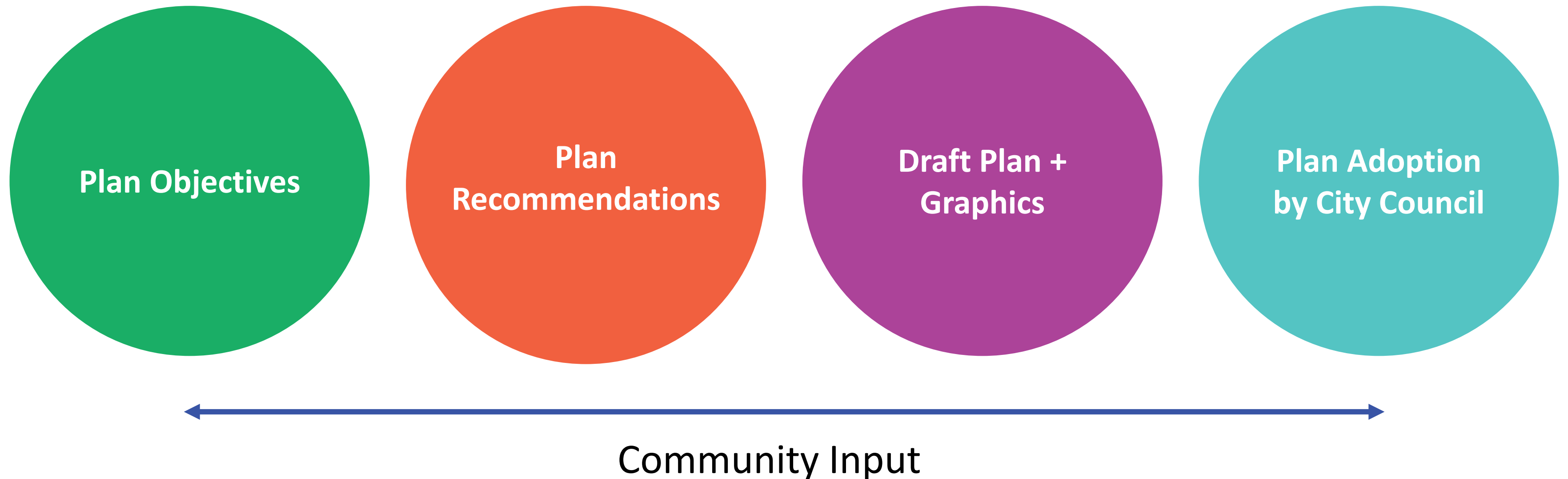
A Land Use Plan is a land use framework that establishes shared expectations for the City, community, and property owners for the mid to long-term future of a geographic area. For example, plans identify the location of **new parks** and **new bike connections**, capture **design elements** important to the community, and identify **appropriate land uses**.

Plan Schedule

Kickoff Meeting: June 9th, 7-8:30 PM, Patrick Henry Recreation Center

Pop-Ups: Throughout the corridor in May and June

18 Months (June 2025 – Dec 2026/Jan. 2027)





Next Steps

Proposed Amendment Overview

Staff is currently evaluating an amendment to Neighborhood Park Plan Recommendation 5 for Lockett Ballfield and Schuyler Hamilton Jones Skatepark, to:

- Align with the updated draft recommendations for the skatepark
- Replace the referenced image in the current plan.
- Replace and update the referenced cost estimate in the current plan.

MAY

Park and Recreation Commission Update

- Thursday, May 15 from 7 – 9 p.m.
- Location: Charles Houston Recreation Center

Community Pop-Up Meeting

- Saturday, May 17 from 3 – 5 p.m.
- Location: 3540-Wheeler Ave.

JULY

- Park and Recreation Commission Public Hearing– Adoption of the Plan Amendment
 - Thursday, July 17, 2025
 - Location: TBD





CITY OF ALEXANDRIA

Recreation, Parks & Cultural Activities

Q+A

<https://www.alexandriava.gov/parks/project/schuyler-hj-park-improvements>

Jose C. Ayala, BSP, CNUa

Principal Planner

Jose.Ayala@alexandriava.gov

Phone: 703.746.5491

