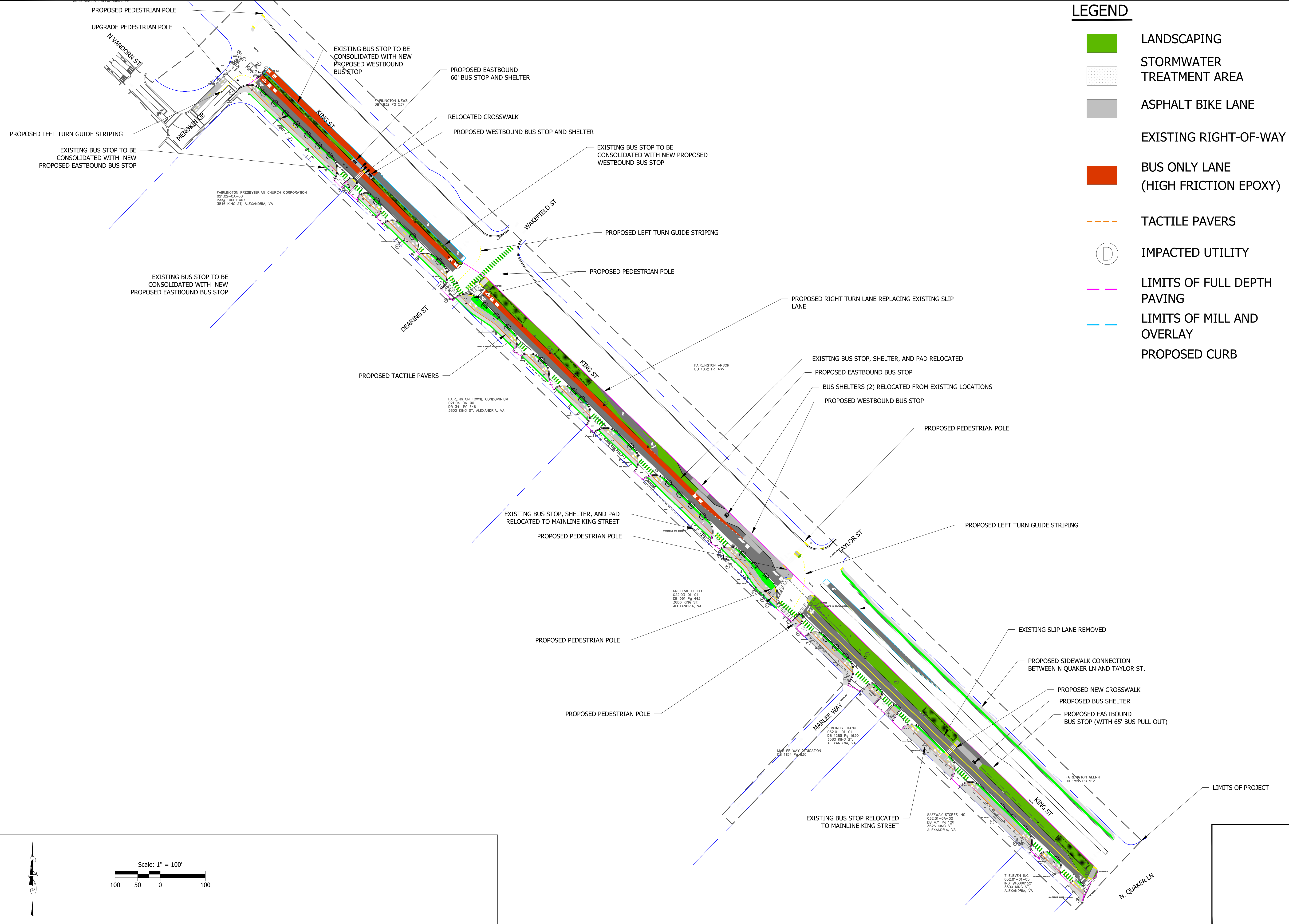


Plot Stamp: 10/9/2024 4:30:06 PM - Amelia Martin  
 File: H:\25\25760 - Alexandria Traffic Safety and Design\006 - King Street-Bradlee Corridor Project\Task 5 - Refined Alternatives\design\Models\25760.252\_Proposed\_Improvements\_Alt2.dwg

**LEGEND**

- LANDSCAPING
- STORMWATER TREATMENT AREA
- ASPHALT BIKE LANE
- EXISTING RIGHT-OF-WAY
- BUS ONLY LANE (HIGH FRICTION EPOXY)
- TACTILE PAVERS
- IMPACTED UTILITY
- LIMITS OF FULL DEPTH PAVING
- LIMITS OF MILL AND OVERLAY
- PROPOSED CURB



**KITTELSON & ASSOCIATES**  
 851 SW 6TH AVENUE, SUITE 600  
 PORTLAND, OR 97204  
 P 503.228.5230 F 503.273.8169

#	DATE	REVISION	APP'D

Revision 3 Date: 10/09/24  
 Drawn: JPS    Designed: JPS    Checked: AJB  
 PROJECT NO. 25760

KING STREET-BRADLEE CORRIDOR ALTERNATIVE 2  
 PROPOSED DESIGN  
 SHEET NO.

