



Alexandria Arlington Resource Recovery Facility

Fiscal Year 2026
Second Quarter Operations Report

February 2026



Prepared by:
HDR Engineering, Inc.
2650 Park Tower Dr, Suite 400
Vienna, VA 22180



Table of Contents

| Section No. | | Page No. |
|--------------------|---|-----------------|
| 1.0 | PURPOSE OF REPORT | 5 |
| 2.0 | EXECUTIVE SUMMARY | 5 |
| 3.0 | FACILITY INSPECTION AND RECORDS REVIEW | 6 |
| 3.1 | Facility Performance | 10 |
| 3.2 | Utility and Reagent Consumptions | 26 |
| 3.3 | Safety & Environmental Training | 27 |
| 4.0 | FACILITY MAINTENANCE | 27 |
| 4.1 | Availability | 28 |
| 4.2 | Facility Housekeeping | 29 |
| 5.0 | ENVIRONMENTAL | 30 |
| 5.1 | Nitrogen Oxide Emissions | 30 |
| 5.2 | Sulfur Dioxide Emissions | 30 |
| 5.3 | Carbon Monoxide Emissions | 30 |
| 5.4 | Opacity | 30 |
| 5.5 | Daily Emissions Data | 31 |
| 5.6 | Ash System Compliance | 31 |
| | APPENDIX A FACILITY CEMS DATA | 32 |
| | APPENDIX B SITE PHOTOS - JANUARY 2026 | 36 |

Front Cover Photos

Top: North view of Facility

Middle: Ash Trailer Canopy

Bottom: Unit 1 Upper Baghouse Area

List of Tables

| <u>Table No.</u> | <u>Page No.</u> |
|--|-----------------|
| Table 1: Summary of Inspection Report Deficiencies | 8 |
| Table 2: Quarterly Performance Summaries | 18 |
| Table 3: Waste Delivery Classification | 19 |
| Table 4: Facility Utility and Reagent Consumptions | 26 |
| Table 5: Quarterly Facility Unit Availabilities | 28 |
| Table 6: Boiler Downtime – Q2FY26 | 28 |
| Table 7: Turbine Generator Downtime – Q2FY26 | 29 |
| Table 8: Facility Housekeeping Ratings – January 2026..... | 29 |
| Table 10: Boiler No. 1 Monthly Summary for Reportable Emissions Data | 33 |
| Table 11: Boiler No. 2 Monthly Summary for Reportable Emissions Data | 34 |
| Table 12: Boiler No. 3 Monthly Summary for Reportable Emissions Data | 35 |

List of Charts

| <u>Chart No.</u> | <u>Page No.</u> |
|--|-----------------|
| Chart 1: Tons of Waste Processed | 10 |
| Chart 2: Tons of Ash Produced per Ton of Waste Processed | 11 |
| Chart 3: Ferrous Recovery Rate | 12 |
| Chart 4: Steam Production..... | 13 |
| Chart 5: 12-Month Rolling Steam Production | 14 |
| Chart 6: Steam Production Rate | 15 |
| Chart 7: Boiler Capacity Utilization | 16 |
| Chart 8: Calculated Waste Heating Value | 17 |
| Chart 9: Cumulative Total Waste Delivery | 20 |
| Chart 10: Gross Electrical Generation | 21 |
| Chart 11: Gross Conversion Rate | 22 |
| Chart 12: Net Conversion Rate | 23 |
| Chart 13: Net Conversion Rate | 24 |
| Chart 14: Gross Turbine Generator Conversion Rate | 25 |
| Chart 15: Quarterly Ash Test Results | 31 |

List of Figures

| Figure No. | Page No. |
|---|----------|
| Figure 1: Temporary generator in the front parking lot | 37 |
| Figure 2: Cooling tower appears to be in good condition | 37 |
| Figure 3: Dolomitic lime silo fill pipe marked out of service | 37 |
| Figure 4: Maintenance observed around ID fan motor | 37 |
| Figure 5: Maintenance observed around Carbon Silo hoses..... | 37 |
| Figure 6: Carbon silo appears to have minimal emissions | 37 |
| Figure 7: Temporary generator on North side of Facility | 38 |
| Figure 8: Spare rotor for under fire air fan | 38 |
| Figure 9: Unit 3 superheater tie ins for the primary and finishing bundles | 38 |
| Figure 10: Unit 3 spiral wound inconel waterwall tube pendants..... | 38 |
| Figure 11: New Deficiency: External deodorizer not working | 38 |
| Figure 12: Unit 3 external ash discharger – no issues observed..... | 38 |
| Figure 13: Carbon booster blower system – no issues observed..... | 39 |
| Figure 14: Maintenance observed around the condenser | 39 |
| Figure 15: Vibrating conveyor area housekeeping in good condition | 39 |
| Figure 16: Firing aisle housekeeping in good condition..... | 39 |
| Figure 17: New Deficiency: Unit 2 transition chute shows previous repair and new crack in wall | 39 |
| Figure 18: New Deficiency: Unit 3 hole identified in the transition chute..... | 39 |
| Figure 19: New stairs installed between Units 2 and 3 from barn door elevation to firing aisle | 40 |
| Figure 20: Wet ash prior to ferrous magnet | 40 |
| Figure 21: Updated Deficiency: Fan above deaerator observed operating | 40 |
| Figure 22: New silencer installed on steam vent piping..... | 40 |
| Figure 23: Updated Deficiency: Damaged insulation has worsened; new leak observed on the North side of Unit 3..... | 40 |
| Figure 24: All windows in tipping hall intact | 40 |
| Figure 25: Unit 2 baghouse hoppers and screw conveyors – no issues observed | 41 |
| Figure 26: Unit 3 SDA Penthouse Enclosure - poor housekeeping conditions | 41 |
| Figure 27: Lower lime silo floor corrosion | 41 |
| Figure 28: New Deficiency: Unit 1 SDA dump valves stuck in the open position without cage..... | 41 |
| Figure 29: Lime silo baghouse and cooling water tower deck – no issues observed..... | 41 |
| Figure 30: Updated Deficiency: Unit 3 baghouse hopper heaters; one remains in manual | 41 |

Definition of Abbreviations & Acronyms

| <u>Abbreviation/Acronym</u> | <u>Definition</u> |
|-----------------------------|---|
| APC | Air Pollution Control |
| Apr | April |
| Aug | August |
| Avg | Average |
| BCU | Boiler Capacity Utilization |
| Btu | British thermal unit |
| CEMS | Continuous Emissions Monitoring System |
| CO | Carbon Monoxide |
| Dec | December |
| Feb | February |
| FMG | Facility Monitoring Group |
| FY | Fiscal Year |
| gal | Gallon |
| HCl | Hydrochloric (Hydrogen Chlorides) |
| HDR | HDR Engineering Inc |
| HHV | Estimated Waste Heating Value (Btu/lb) |
| ID | Induced Draft |
| Jan | January |
| Jul | July |
| Jun | June |
| klbs | Kilo-pounds (1,000 lbs) |
| kWh | Kilowatt hours (1,000 watt-hours) |
| lbs | Pounds |
| Mar | March |
| Max | Maximum |
| May | May |
| Min | Minimum |
| MSW | Municipal Solid Waste |
| MWh | Megawatt hours |
| No | Number |
| NOV | Notice of Violation |
| Nov | November |
| NO _x | Nitrogen Oxide |
| Oct | October |
| OSHA | Occupational Safety and Health Administration |
| ppm | Parts per million |
| ppmdv | Parts per million dry volume |
| Q1 | First Quarter |
| Q2 | Second Quarter |
| Q3 | Third Quarter |
| Q4 | Fourth Quarter |
| RAAI | Reworld Alexandria Arlington, Inc. |
| SDA | Spray Dryer Absorber |
| Sep | September |
| SO ₂ | Sulfur Dioxide |
| TCLP | Toxicity Characteristic Leaching Procedure |
| VADEQ | Virginia Department of Environmental Quality |
| yr | Year |
| YTD | Year to date |

Alexandria/Arlington Waste-to-Energy Facility Second Quarter Operations Report – Fiscal Year 2026

1.0 Purpose of Report

HDR Engineering, Inc. (HDR) was authorized by the Facility Monitoring Group (FMG) to conduct quarterly site assessments and provide quarterly reports regarding the operation and maintenance of the Reworld Alexandria/Arlington Waste-to-Energy Facility (Facility) for the 2026 Fiscal Year. This report is prepared for the second quarter of the 2026 Fiscal Year and summarizes Facility operations between October 1, 2025, and December 31, 2025. This report identifies the fiscal year beginning on July 1, 2025, as FY26 and the quarter beginning on October 1, 2025, as Q2FY26.

This report is based upon HDR's experience in the waste-to-energy industry, upon site observation visits and previous reports provided by HDR, and upon data provided by Reworld Alexandria/Arlington, Inc. (RAAI), the Facility owner and operator.

2.0 Executive Summary

RAAI operated the Facility in an acceptable manner and in accordance with established waste-to-energy industry practices during Q2FY26. The operation of the Facility, maintenance, safety, and overall cleanliness continue to be above average. The Facility experienced no environmental permit deviations throughout Q2FY26.

During Q2FY26, the boilers experienced two (2) instances of scheduled downtime totaling 264.3 hours, four (4) instances of unscheduled downtime totaling 138.8 hours and no standby downtime. The turbine generators experienced one (1) instance of unscheduled downtime totaling 18.8 hours during the quarter and two (2) instances of standby time totaling 177.4 hours. A detailed listing of downtime is provided in Section 4.1 of this report.

Typical waste processed during the quarter was 942.8 tons per day, or 96.7% of nominal facility capacity which compares very favorably to industry averages. Waste deliveries averaged 938.8 tons per day, which is slightly lower (0.4%) than the burn rate.

Compared to the corresponding quarter in FY25, during Q2FY26 MSW processed was nearly identical (less than 0.1% lower), steam production increased (3.5%), and electricity generated (gross) increased (2.9%). The increase in steam production was attributable to higher (2.3%) waste heating value and less (31.2 hours) downtime (unscheduled, scheduled and standby) experienced by the boilers. The increase in electrical generation was attributable to more steam production and less (92.7 hours) downtime (unscheduled, scheduled, and standby) experienced by the turbine generators compared to Q2FY25.

3.0 Facility Inspection and Records Review

In January 2026, HDR met with the Facility management and other plant personnel to discuss Facility operations and maintenance, perform an independent visual inspection of the operating Facility, photograph areas of interest, and perform a review of recent Facility activity. HDR obtained operating data and monthly reports electronically from RAAI throughout the quarter and maintains a running tabulation of the status of corrective actions and plant performance trends. RAAI provides the following documents for each month:

- Facility Monthly Operating Reports
- Monthly Continuous Emissions Monitoring System (CEMS) Reports

Table 1 summarizes maintenance, repair, and plant condition issues reported during this and prior reporting periods. An “A” indicates an issue of the highest priority and worthy of immediate attention. Such items are usually safety or operability issues. A “B” indicates that the issue needs to be dealt with as quickly as possible but is not urgent. These items will usually result in a process improvement or will help avoid future “urgent” issues. A “C” indicates that the issue should be dealt with in due course but is not a priority issue. This category might include, but is not limited to issues related to aesthetics, non-urgent maintenance, or housekeeping improvements which are not safety related. Note that HDR site assessments are generally performed while equipment is operating, and are not intended to address the internal condition, performance or life expectancy of mechanical, electrical, and electronic equipment and structures. HDR site assessments are only performed quarterly, generally representing findings on the

day of the assessment. RAAI is responsible, without limitation, for operations, maintenance, environmental performance, and safety and should not rely on HDR observations or inspection reports which are overviews of Facility external conditions only.

Table 1: Summary of Inspection Report Deficiencies

*A is highest priority & demands immediate attention; B needs attention but is not urgent; C can be addressed at earliest opportunity & is not urgent.

| Item No. | Inspection Report Deficiencies | Issue Reported | Priority* | HDR Recommendation | Status | Open/Closed |
|----------|---|----------------|-----------|--|---|-------------|
| 11116-1 | Pavement spider-cracking at Tipping Floor Entrance | November 2016 | C | Resurface section of pavement at Tipping Floor Entrance | Status Unchanged | Open |
| 1117-1 | SDA Penthouse No. 3 Door deteriorated at base | November 2017 | C | Patch and Paint Door – Replace if necessary | Status Unchanged | Open |
| 0819-1 | Deterioration on floor and wall behind lime slurry piping in SDA Penthouse No. 2 | August 2019 | C | Conduct painting preservation measures | Status Unchanged | Open |
| 0819-2 | Siding deteriorated beneath Baghouse No. 3 Hoppers | August 2019 | C | Replace siding | Status Unchanged | Open |
| 0220-1 | Siding deteriorated on the north side of Baghouse No. 2 | February 2020 | C | Replace siding and conduct painting preservation measures | Status Unchanged | Open |
| 0820-1 | Damaged/Missing insulation and lagging throughout Facility | August 2020 | C | Perform audit of all steam piping and replace damaged/missing insulation and lagging throughout the Facility as needed | Status Unchanged | Open |
| 0221-1 | Insulation and lagging damaged/deteriorated around Boiler No. 3 Steam Drum | February 2021 | C | Replace insulation and lagging | Status Unchanged | Open |
| 0221-2 | Unit 3 Baghouse hopper heaters set to manual; heater off but signaling low temperature. | February 2021 | B | Repair hopper heaters | Updated – Only Unit 3 | Open |
| 0521-1 | Feed Chute Cooling Jacket Water Level Reservoirs (typical of 2) empty on Boilers No. 1 | May 2021 | B | Repair feed chute cooling jacket water level boxes | Status Unchanged | Open |
| 1122-1 | A temporary pump is being utilized on the ground floor of the Turbine Hall to transport wastewater from the trench drains to the Cooling Tower basin. | November 2022 | B | Consider a permanent pump installation in lieu of temporary. | Status Unchanged | Open |
| 0824-1 | Circulating Water Pump Housing corroded | August 2024 | C | Replace housing | Status Unchanged | Open |
| 0824-2 | Roof ventilation fan not operating above deaerator | August 2024 | C | Repair fan | Closed – observed operating. Figure 21 | Closed |
| 0824-3 | Refractory damaged around G9B-11 sootblower on Boiler No. 1 | August 2024 | C | Repair Refractory | Status Unchanged | Open |
| 1224-1 | Boiler No. 1 side wall of feed chute corroded/deteriorated | December 2024 | B | Repair feed chute and perform painting preservation measures | Status Unchanged | Open |
| 0425-1 | Sootblower seal air disconnected on Boiler No. 3 G9-B09 | April 2025 | B | Repair connection | Status Unchanged | Open |
| 0425-2 | Boiler No. 3 feed chute deteriorated with visible holes | April 2025 | B | Patch holes and perform painting preservation measures | Status Unchanged | Open |
| 0625-1 | Air leaking from hydraulics on Boiler No. 2 Superheater double-dump valves | June 2025 | C | Repair air connections | Closed – operating per usual | Closed |
| 0625-2 | Insulation damaged from hanger on external steam line near Boiler No. 3 economizer rear wall. Leak identified in January 2026. | June 2025 | C | Repair hanger support and fix insulation on pipe. | Updated – New leak Identified. Refer to Figure 23 | Open |

| Item No. | Inspection Report Deficiencies | Issue Reported | Priority* | HDR Recommendation | Status | Open/Closed |
|----------|---|----------------|-----------|---------------------------------|---------------------------------|-------------|
| 1025-1 | Unit 1 Lower Lime Silo with significant corrosion | October 2025 | B | Repair flooring | Status Unchanged | Open |
| 0126-1 | Unit 1 SDA Double- Dump Valves stuck in the open position and without safety cage | January 2026 | B | Replace cage and fix connection | New – Refer to Figure 28 | Open |
| 0126-2 | Unit 3 Transition Chute damaged/deteriorated – Safety Concern | January 2026 | A | Patch hole | New – Refer to Figure 18 | Open |
| 0126-3 | Unit 2 Transition Chute damaged/deteriorated – Safety Concern | January 2026 | A | Patch hole | New – Refer to Figure 17 | Open |
| 0126-4 | External deodorizer not operating near tipping floor exit | January 2026 | C | Repair system | New – Refer to Figure 11 | Open |

3.1 Facility Performance

Monthly operating data provided by RAAI indicates that 86,737 tons of MSW were processed during Q2FY26, and a total of 86,368 tons of MSW including 1,617 tons of Special Handling Waste (1.9% by weight) were received. Total ash production during the quarter was 17,432 tons, which represents 20.1% of the waste processed. The average uncorrected steam production rate for Q2FY26 was 3.13 tons_{steam}/ton_{waste}, which is higher (3.5%) than the corresponding quarter and attributable to a higher (2.3%) HHV.

Chart 1: Tons of Waste Processed

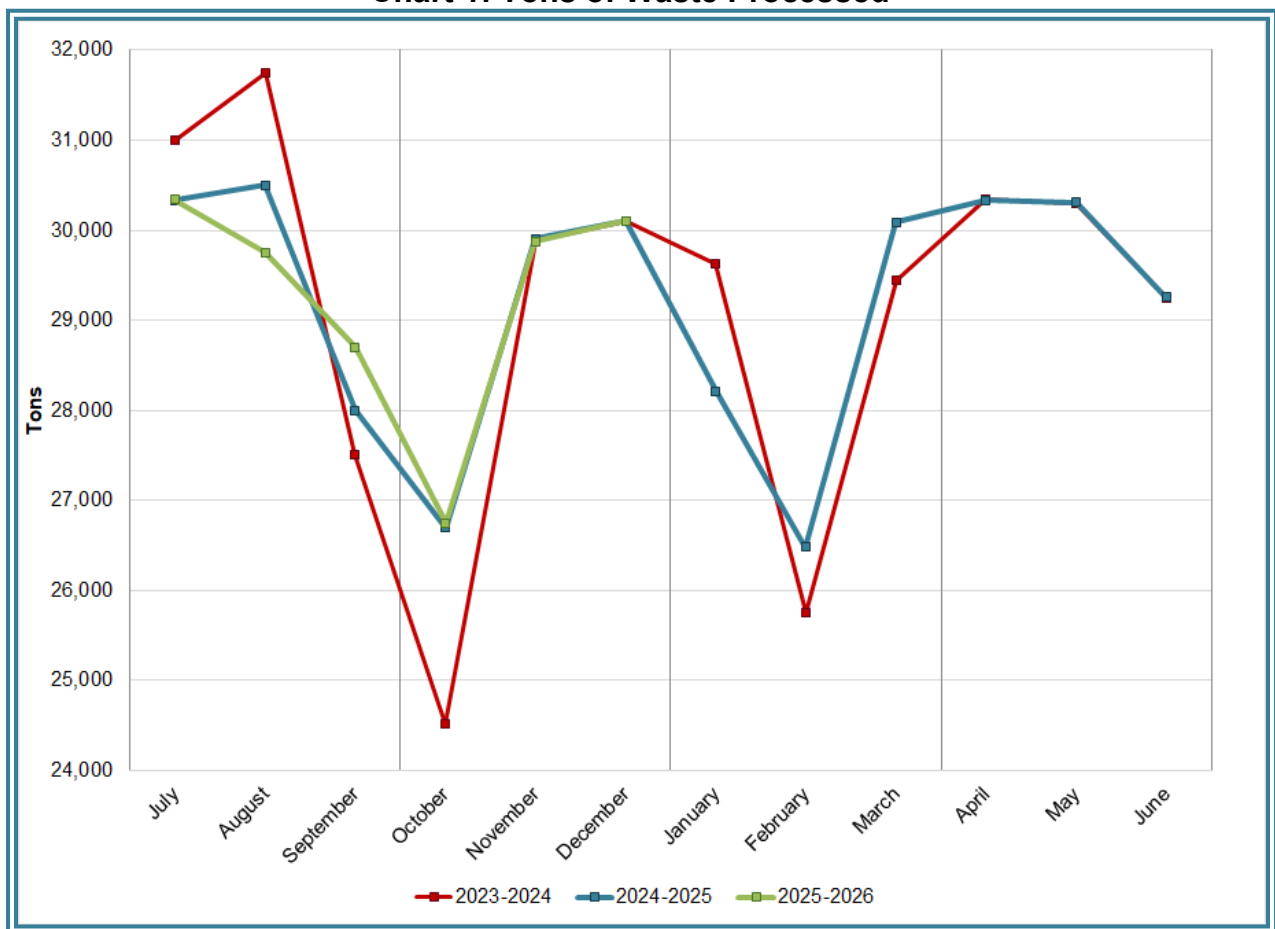


Chart 1 illustrates that Q2FY26 waste processed was comparable (less than 0.1%) to the corresponding quarter in FY25. RAAI reported that 680 tipping floor/MSW internal inspections were performed during the quarter, and no notices of violation (NOVs) were issued.

Chart 2: Tons of Ash Produced per Ton of Waste Processed

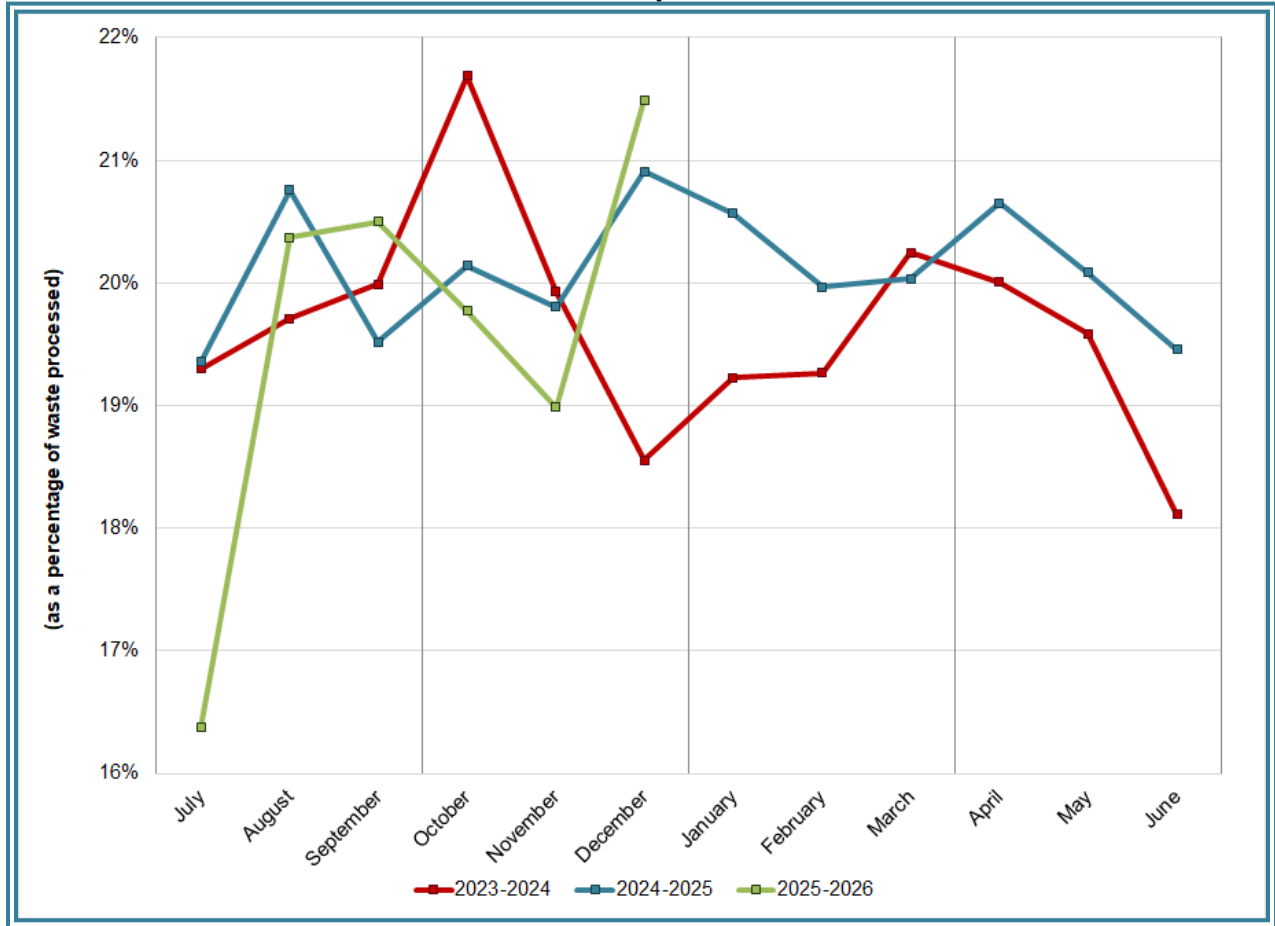


Chart 2 illustrates that the average ash production rate in Q2FY26 decreased 0.2 percentage points to 20.1% of processed waste compared to the corresponding quarter in FY25 when the rate was 20.3%.

Chart 3: Ferrous Recovery Rate

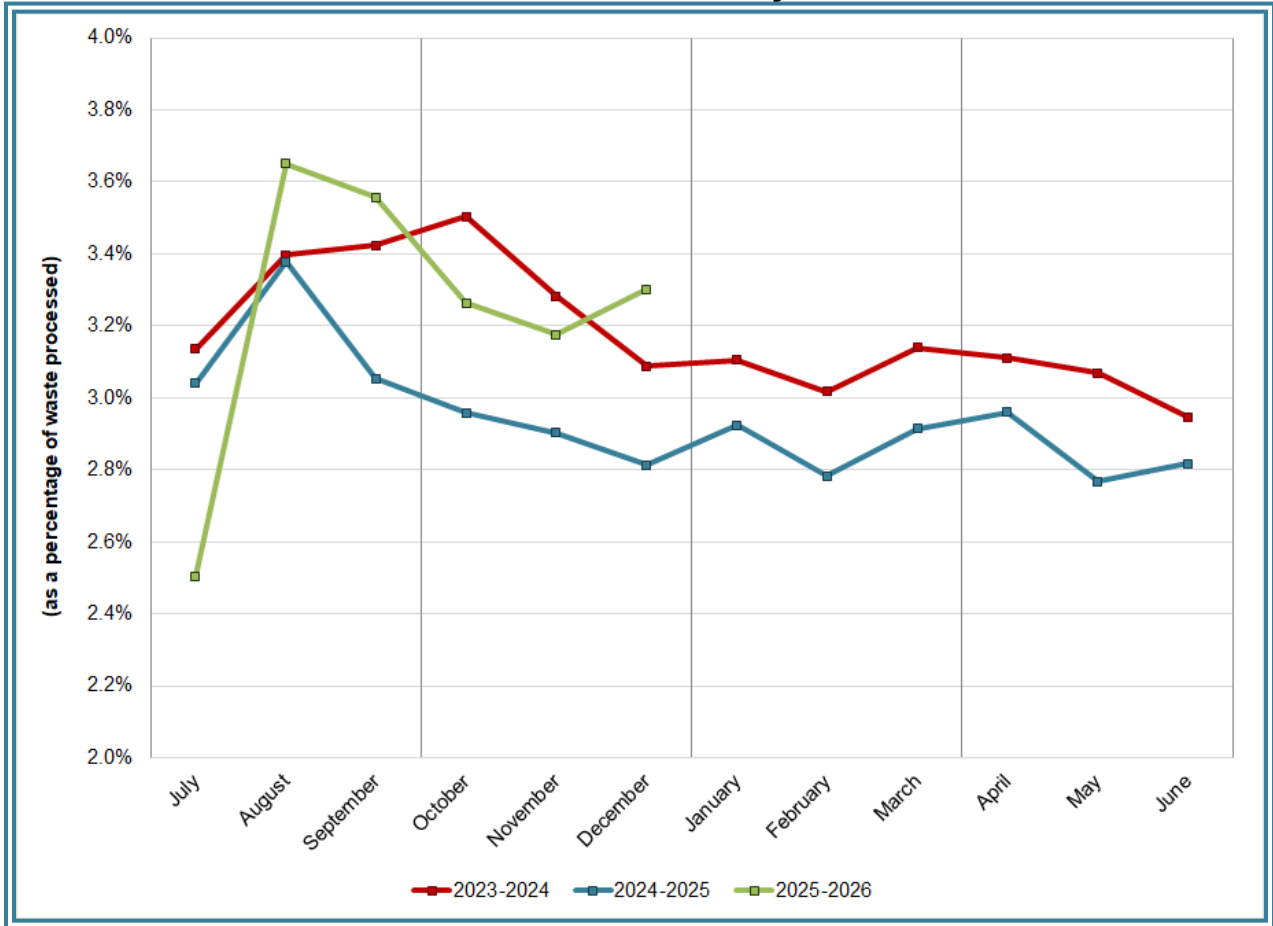
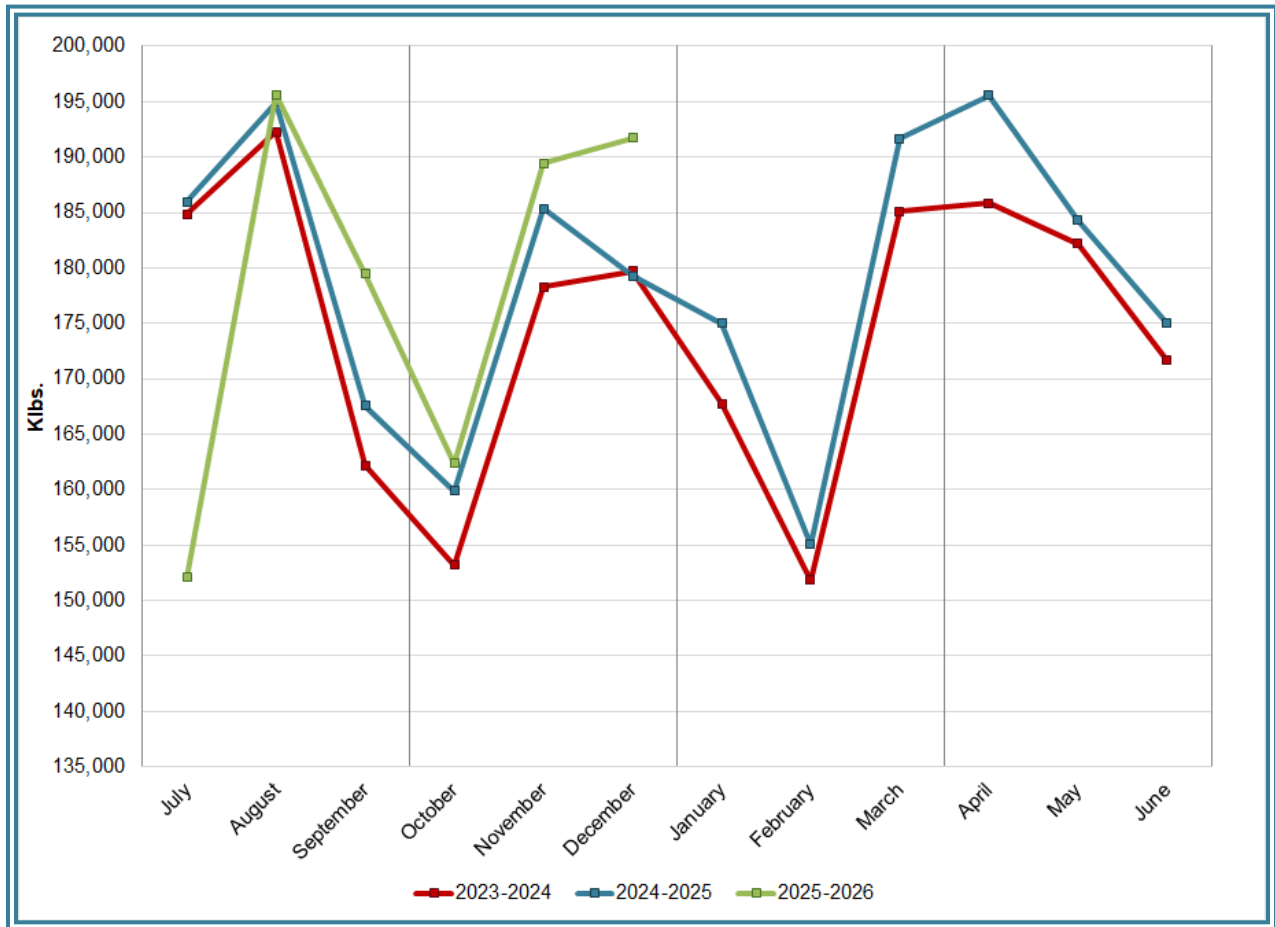


Chart 3 depicts the monthly ferrous metal recovery rate as a percentage of processed MSW tonnage. In Q2FY26, 2,816 tons of ferrous metal were recovered, which is 11.0% higher than the corresponding quarter in FY25. Chart 3 illustrates that the ferrous recovery rate overall in Q2FY26 was higher, at 3.2%, compared to the corresponding quarter in FY25 when the rate was 2.9%.

Chart 4: Steam Production



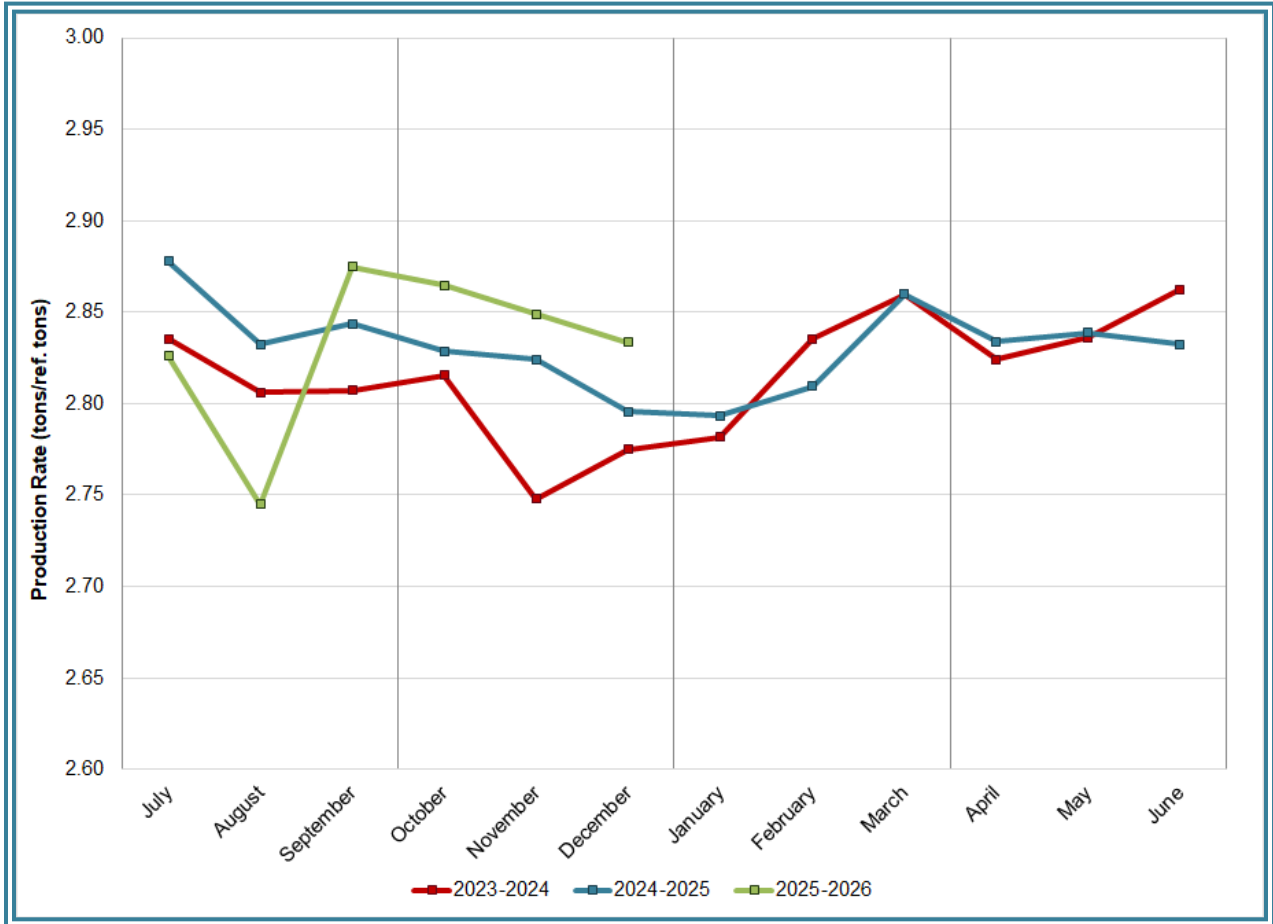
In Chart 4, the total steam production for Q2FY26 was 543,541 klbs, 3.5% higher than the corresponding quarter in FY25. The increase in steam production was attributable to a higher (1.9%) boiler capacity utilization, higher (2.3%) HHV paired with less(31.2 hours) downtime experienced by the boilers.

Chart 5: 12-Month Rolling Steam Production



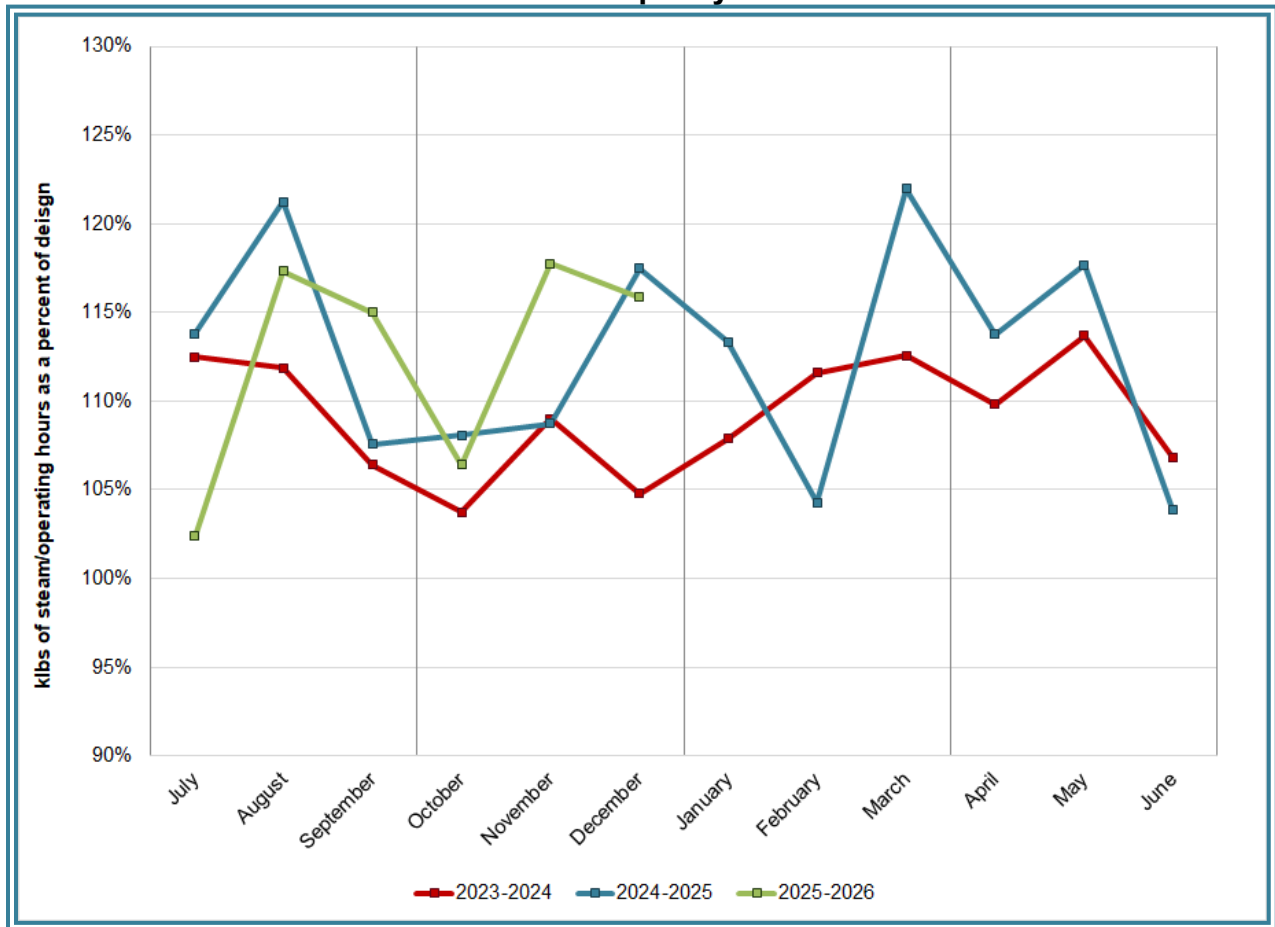
Chart 5 depicts the 12-month rolling steam production for FY26, and for the previous two (2) fiscal years. According to the Title V permit, the annual steam production for the Facility shall not exceed 1,170,400 tons based on an average value of 3.34 lbs. of steam per lb. of MSW processed, calculated monthly as the sum of each consecutive 12-month period. The 12-month rolling total for steam production ending in December 2025 was 1,169,688 tons, which is 99.9% of the limit. Chart 5 shows that Facility throughput, and in turn, steam and electricity production are being throttled to stay slightly below the steam production permit limit each month.

Chart 6: Steam Production Rate



In Chart 6, the conversion of raw waste tonnages into “reference tons” is another way of analyzing steam production and helps to determine whether changes are related to boiler performance or to fuel issues. “Reference tons” are adjusted to account for the calculated average fuel heating value, so that lower BTU fuel raw tonnages are adjusted upwards and vice versa. In Q2FY26, this metric tracked slightly higher at 2.85 tons_{steam}/ton_{ref} compared to the rate (2.82 tons_{steam}/ton_{ref}), experienced during Q2FY25 and is indicative of slightly improved boiler efficiency.

Chart 7: Boiler Capacity Utilization



In Chart 7, the boiler capacity utilization (BCU) refers to the total steam production in respect to the total availability. This metric demonstrates how the boilers are operating compared to the design maximum continuous rating (MCR) when the boilers are online. The BCU during Q2FY26 was 113% compared to the corresponding quarter in FY25 when the BCU was 111%.

Chart 8: Calculated Waste Heating Value

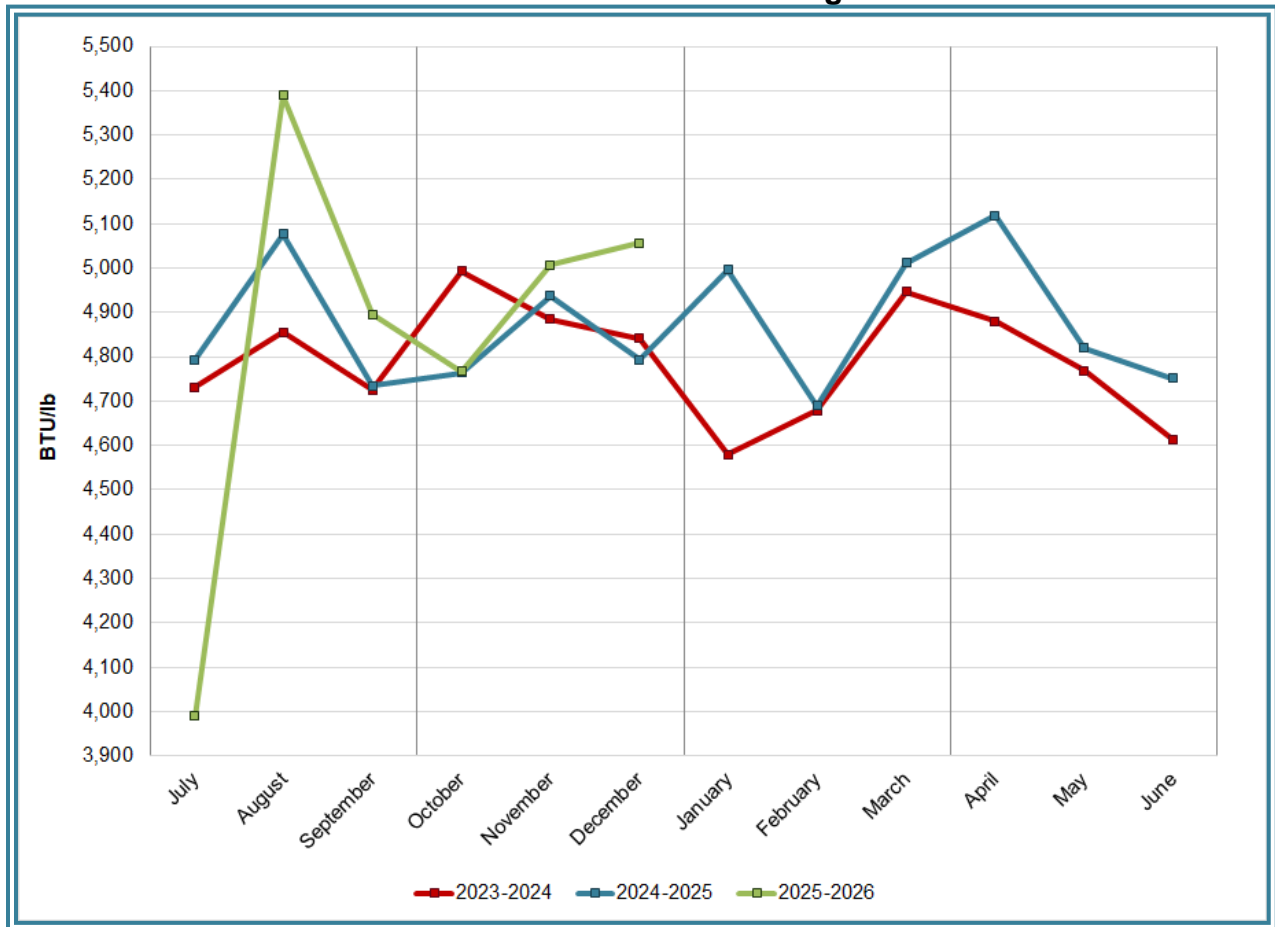


Chart 8 illustrates that Q2FY26 calculated average waste heating value was higher (2.3%) at 4,950 Btu/lb, compared to the corresponding quarter in FY25, which averaged 4,834 Btu/lb. Note that 4.58¹ inches of precipitation were recorded at Ronald Reagan National Airport during Q2FY26, which is 1.3 inches less than the corresponding quarter in FY25. Typically, as rainfall decreases, HHV increases, and vice versa.

¹ <https://www.wunderground.com/>

Table 2: Quarterly Performance Summaries

| Month | Waste Processed (tons) | Waste Diverted (tons) | Ash Shipped (tons) | Special Handling (Supplemental) (tons) | Ferrous Recovered (tons) | Steam Produced (klbs) | Net Electrical Generation (MWh) | |
|------------------------|-------------------------|-----------------------|--------------------|--|--------------------------|-----------------------|---------------------------------|---------------|
| Q2FY24 | Quarterly Totals | 84,502 | 0 | 16,858 | 1,581 | 2,769 | 511,201 | 34,974 |
| | April-23 | 24,522 | 0 | 5,318 | 628 | 859 | 153,214 | 9,998 |
| | May-23 | 29,886 | 0 | 5,956 | 482 | 981 | 178,311 | 12,219 |
| | June-23 | 30,094 | 0 | 5,584 | 471 | 929 | 179,676 | 12,757 |
| Q2FY25 | Quarterly Totals | 86,704 | 0 | 17,593 | 1,437 | 2,505 | 524,546 | 35,804 |
| | April-24 | 26,698 | 0 | 5,377 | 397 | 790 | 159,901 | 10,698 |
| | May-24 | 29,905 | 0 | 5,922 | 609 | 868 | 185,345 | 12,935 |
| | June-24 | 30,101 | 0 | 6,294 | 432 | 847 | 179,300 | 12,171 |
| Q2FY26 | Quarterly Totals | 86,737 | 0 | 17,432 | 1,617 | 2,816 | 543,541 | 37,148 |
| | April-25 | 26,752 | 0 | 5,289 | 623 | 873 | 162,376 | 10,870 |
| | May-25 | 29,878 | 0 | 5,673 | 461 | 949 | 189,420 | 12,961 |
| | June-25 | 30,107 | 0 | 6,470 | 533 | 994 | 191,745 | 13,317 |
| FY24 Totals | | 349,483 | 0 | 68,523 | 6,596 | 11,118 | 2,094,885 | 141,268 |
| FY25 Totals | | 350,215 | 0 | 70,424 | 5,900 | 10,312 | 2,149,566 | 145,712 |
| FY26 YTD Totals | | 175,531 | 0 | 34,344 | 3,103 | 5,683 | 1,070,729 | 72,908 |

Table 2 presents the production data provided to HDR by RAAI for Q2FY26 on both a monthly and quarterly basis. For purposes of comparison, Q2FY24 and Q2FY25 are shown, as well as FY24, FY25 and FY26 Year-to-Date (YTD) totals.

In comparing quarterly totals, the data shows:

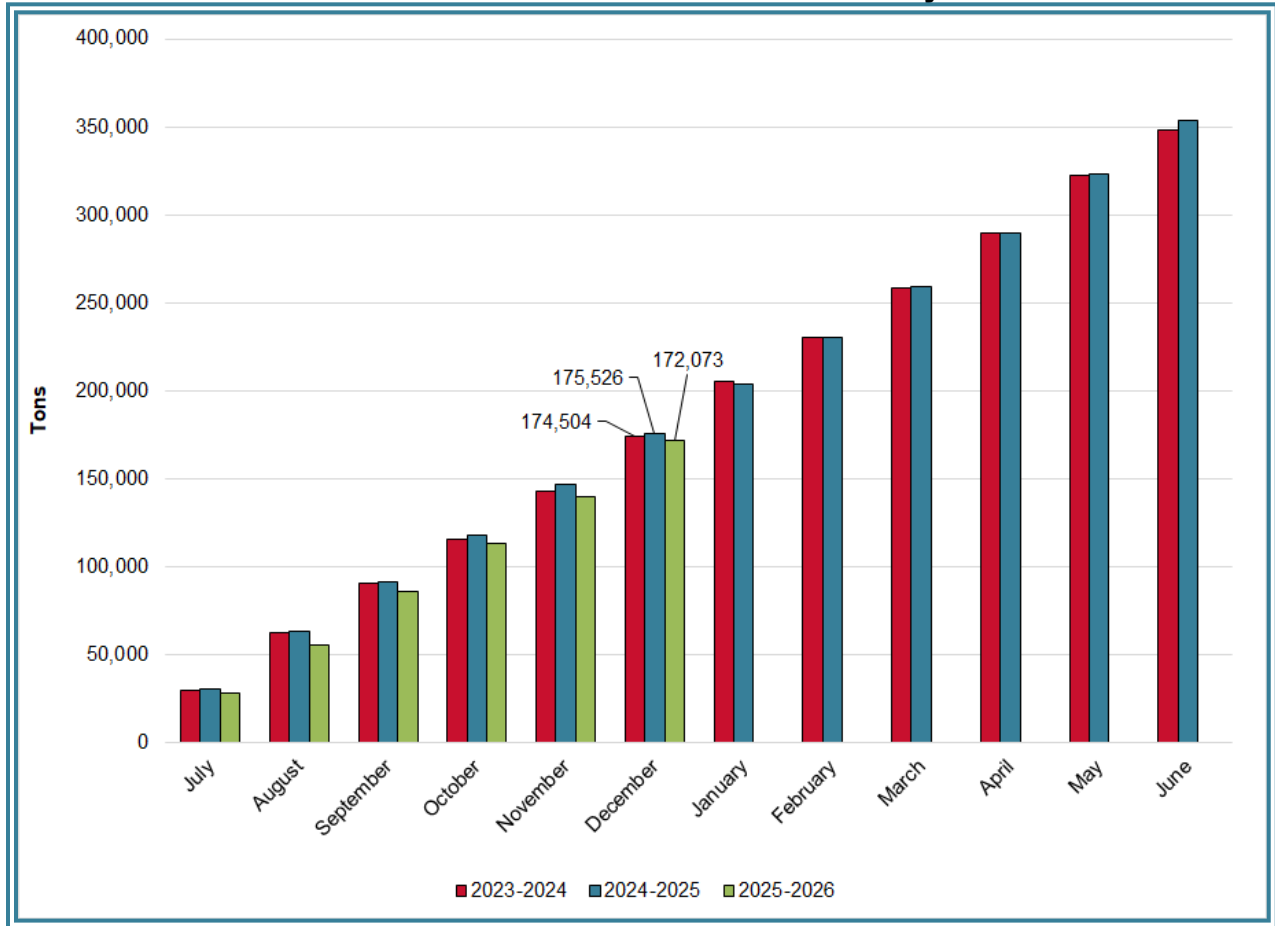
- Nearly identical waste was processed in Q2FY26 compared to Q2FY25, and more than Q2FY24
- More steam was generated in Q2FY26 than Q2FY25 and Q2FY24
- More electricity (net) was generated in Q2FY26 than Q2FY25 and Q2FY24
- More supplemental waste was received in Q2FY26 than Q2FY25 and Q2FY24

Note that the total steam generation figures presented in Table 2 do not correlate with the annual steam production limit from the Facility Permit; such limits apply on an annual rolling average, evaluated monthly.

Table 3: Waste Delivery Classification

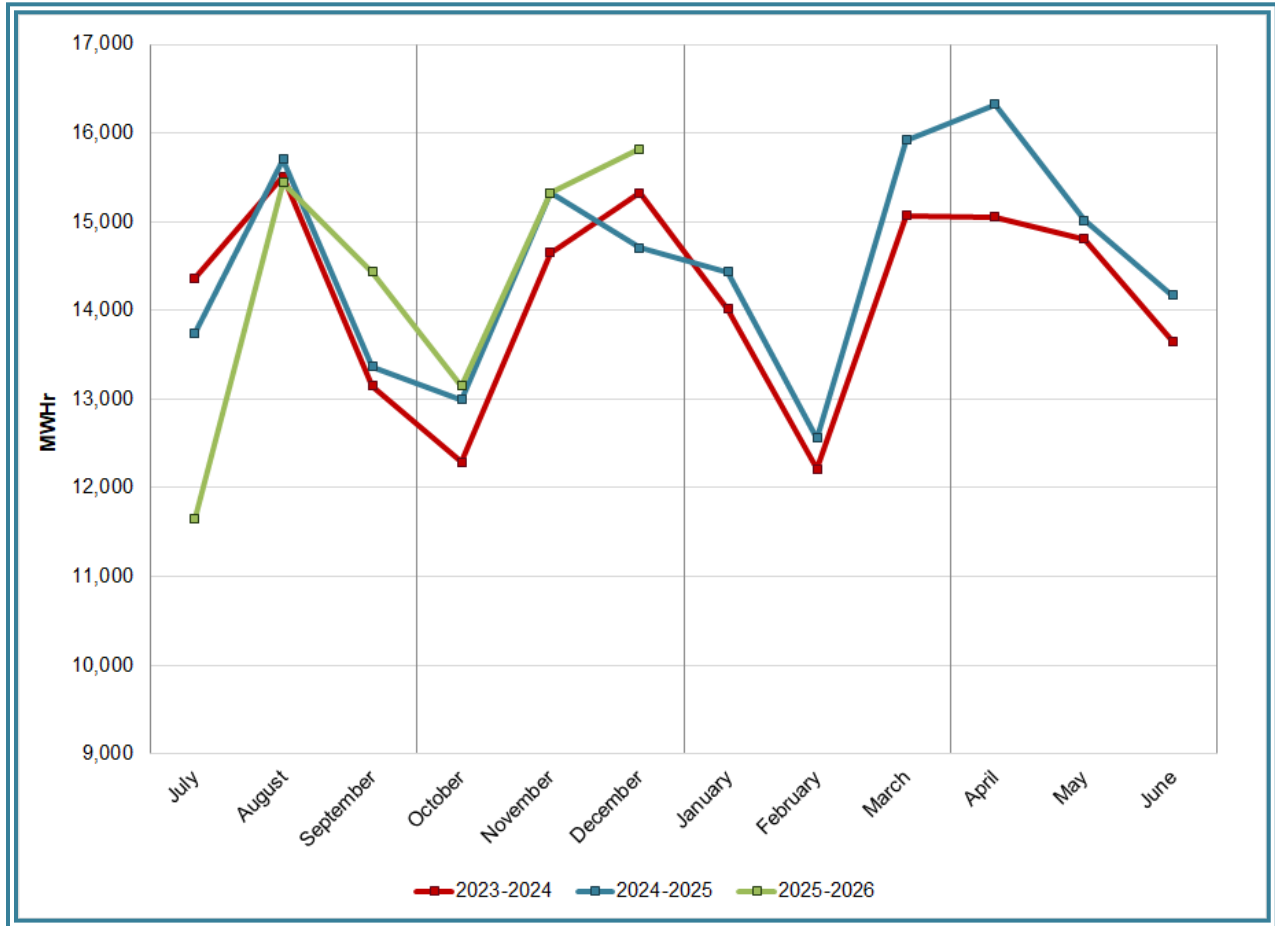
| | | <u>Jul</u> | <u>Aug</u> | <u>Sep</u> | <u>Oct</u> | <u>Nov</u> | <u>Dec</u> | <u>Jan</u> | <u>Feb</u> | <u>Mar</u> | <u>Apr</u> | <u>May</u> | <u>Jun</u> | <u>Totals</u> | <u>% of Total</u> |
|------|-----------------------|---------------|---------------|---------------|---------------|---------------|---------------|---------------|---------------|---------------|---------------|---------------|---------------|----------------|-------------------|
| FY21 | City Waste | 1,583 | 1,905 | 2,121 | 1,906 | 1,970 | 1,999 | 1,556 | 1,393 | 2,038 | 2,102 | 2,042 | 2,197 | 22,811 | 6.55% |
| | County Waste | 2,377 | 2,713 | 2,711 | 2,589 | 2,550 | 2,646 | 2,365 | 2,054 | 2,441 | 2,472 | 2,542 | 2,682 | 30,143 | 8.66% |
| | Municipal Solid Waste | 22,517 | 26,941 | 24,523 | 22,102 | 19,209 | 25,831 | 22,419 | 20,046 | 25,980 | 25,621 | 25,260 | 24,603 | 285,053 | 81.88% |
| | Supplemental Waste | 691 | 1,139 | 927 | 1,045 | 930 | 859 | 895 | 1,070 | 747 | 653 | 519 | 641 | 10,117 | 2.91% |
| | MSW Totals | 27,169 | 32,698 | 30,282 | 27,642 | 24,659 | 31,336 | 27,234 | 24,562 | 31,207 | 30,848 | 30,363 | 30,123 | 348,124 | 100.00% |
| | | <u>Jul</u> | <u>Aug</u> | <u>Sep</u> | <u>Oct</u> | <u>Nov</u> | <u>Dec</u> | <u>Jan</u> | <u>Feb</u> | <u>Mar</u> | <u>Apr</u> | <u>May</u> | <u>Jun</u> | <u>Totals</u> | <u>% of Total</u> |
| FY22 | City Waste | 1,853 | 2,080 | 2,042 | 1,855 | 2,002 | 1,914 | 1,628 | 1,570 | 1,900 | 1,895 | 2,107 | 2,203 | 23,049 | 6.58% |
| | County Waste | 2,516 | 2,403 | 2,457 | 2,184 | 2,463 | 2,489 | 2,232 | 2,192 | 2,519 | 2,394 | 2,761 | 2,717 | 29,337 | 8.38% |
| | Municipal Solid Waste | 24,682 | 26,646 | 25,378 | 19,376 | 23,834 | 27,424 | 24,212 | 19,114 | 23,465 | 25,745 | 27,057 | 23,637 | 290,569 | 83.01% |
| | Supplemental Waste | 688 | 778 | 479 | 514 | 534 | 499 | 448 | 349 | 626 | 685 | 756 | 735 | 7,090 | 2.03% |
| | MSW Totals | 29,740 | 31,907 | 30,356 | 23,929 | 28,832 | 32,326 | 28,520 | 23,225 | 28,510 | 30,719 | 32,681 | 29,291 | 350,035 | 100.00% |
| | | <u>Jul</u> | <u>Aug</u> | <u>Sep</u> | <u>Oct</u> | <u>Nov</u> | <u>Dec</u> | <u>Jan</u> | <u>Feb</u> | <u>Mar</u> | <u>Apr</u> | <u>May</u> | <u>Jun</u> | <u>Totals</u> | <u>% of Total</u> |
| FY23 | City Waste | 1,841 | 2,020 | 1,874 | 1,827 | 2,046 | 1,872 | 1,880 | 1,566 | 1,829 | 1,887 | 2,035 | 1,913 | 22,590 | 6.43% |
| | County Waste | 2,339 | 2,471 | 2,454 | 2,188 | 2,448 | 2,333 | 2,453 | 2,092 | 2,444 | 2,104 | 2,656 | 2,571 | 28,552 | 8.13% |
| | Municipal Solid Waste | 24,434 | 26,977 | 23,660 | 17,994 | 24,827 | 25,487 | 26,656 | 21,209 | 23,673 | 24,530 | 29,037 | 24,013 | 292,500 | 83.32% |
| | Supplemental Waste | 656 | 797 | 682 | 444 | 582 | 537 | 559 | 592 | 582 | 567 | 682 | 723 | 7,403 | 2.11% |
| | MSW Totals | 29,270 | 32,265 | 28,670 | 22,454 | 29,905 | 30,229 | 31,548 | 25,460 | 28,527 | 29,087 | 34,410 | 29,220 | 351,045 | 100.00% |
| | | <u>Jul</u> | <u>Aug</u> | <u>Sep</u> | <u>Oct</u> | <u>Nov</u> | <u>Dec</u> | <u>Jan</u> | <u>Feb</u> | <u>Mar</u> | <u>Apr</u> | <u>May</u> | <u>Jun</u> | <u>Totals</u> | <u>% of Total</u> |
| FY24 | City Waste | 1,780 | 2,149 | 1,746 | 1,735 | 1,889 | 1,688 | 1,829 | 1,603 | 1,650 | 1,887 | 2,106 | 1,812 | 21,874 | 6.29% |
| | County Waste | 2,521 | 2,755 | 2,461 | 2,519 | 2,612 | 2,465 | 2,543 | 2,378 | 2,437 | 2,650 | 2,966 | 2,545 | 30,852 | 8.87% |
| | Municipal Solid Waste | 25,031 | 26,225 | 23,276 | 19,985 | 22,285 | 26,796 | 25,750 | 20,805 | 23,119 | 26,211 | 27,185 | 20,780 | 287,450 | 82.64% |
| | Supplemental Waste | 692 | 702 | 529 | 628 | 482 | 471 | 500 | 492 | 556 | 505 | 535 | 503 | 6,596 | 1.90% |
| | MSW Totals | 30,024 | 32,911 | 28,013 | 24,867 | 27,269 | 31,420 | 30,623 | 25,278 | 27,763 | 31,253 | 32,792 | 25,639 | 347,852 | 100.00% |
| | | <u>Jul</u> | <u>Aug</u> | <u>Sep</u> | <u>Oct</u> | <u>Nov</u> | <u>Dec</u> | <u>Jan</u> | <u>Feb</u> | <u>Mar</u> | <u>Apr</u> | <u>May</u> | <u>Jun</u> | <u>Totals</u> | <u>% of Total</u> |
| FY25 | City Waste | 1,837 | 1,660 | 1,648 | 1,869 | 1,694 | 1,778 | 1,610 | 1,492 | 1,710 | 1,862 | 2,046 | 1,834 | 21,041 | 5.95% |
| | County Waste | 2,640 | 2,738 | 2,619 | 2,946 | 2,611 | 2,715 | 2,549 | 2,205 | 2,305 | 2,394 | 2,628 | 2,552 | 30,902 | 8.73% |
| | Municipal Solid Waste | 25,456 | 28,049 | 23,255 | 21,665 | 23,669 | 23,957 | 23,405 | 22,533 | 24,306 | 26,016 | 28,077 | 25,604 | 295,994 | 83.65% |
| | Supplemental Waste | 453 | 480 | 349 | 397 | 609 | 432 | 416 | 372 | 578 | 635 | 577 | 602 | 5,900 | 1.67% |
| | MSW Totals | 30,387 | 32,927 | 27,871 | 26,877 | 28,582 | 28,882 | 27,981 | 26,603 | 28,899 | 30,908 | 33,328 | 30,592 | 353,837 | 100.00% |
| | | <u>Jul</u> | <u>Aug</u> | <u>Sep</u> | <u>Oct</u> | <u>Nov</u> | <u>Dec</u> | <u>Jan</u> | <u>Feb</u> | <u>Mar</u> | <u>Apr</u> | <u>May</u> | <u>Jun</u> | <u>Totals</u> | <u>% of Total</u> |
| FY26 | City Waste | 1,932 | 1,693 | 1,831 | 1,863 | 1,818 | 1,923 | | | | | | | 11,060 | 6.43% |
| | County Waste | 2,555 | 2,337 | 2,507 | 2,574 | 2,232 | 2,626 | | | | | | | 14,832 | 8.62% |
| | Municipal Solid Waste | 23,598 | 22,526 | 25,240 | 22,711 | 21,880 | 27,124 | | | | | | | 143,078 | 83.15% |
| | Supplemental Waste | 560 | 480 | 446 | 623 | 461 | 533 | | | | | | | 3,103 | 1.80% |
| | MSW Totals | 28,645 | 27,037 | 30,023 | 27,771 | 26,391 | 32,206 | | | | | | | 172,073 | 100.00% |

Chart 9: Cumulative Total Waste Delivery



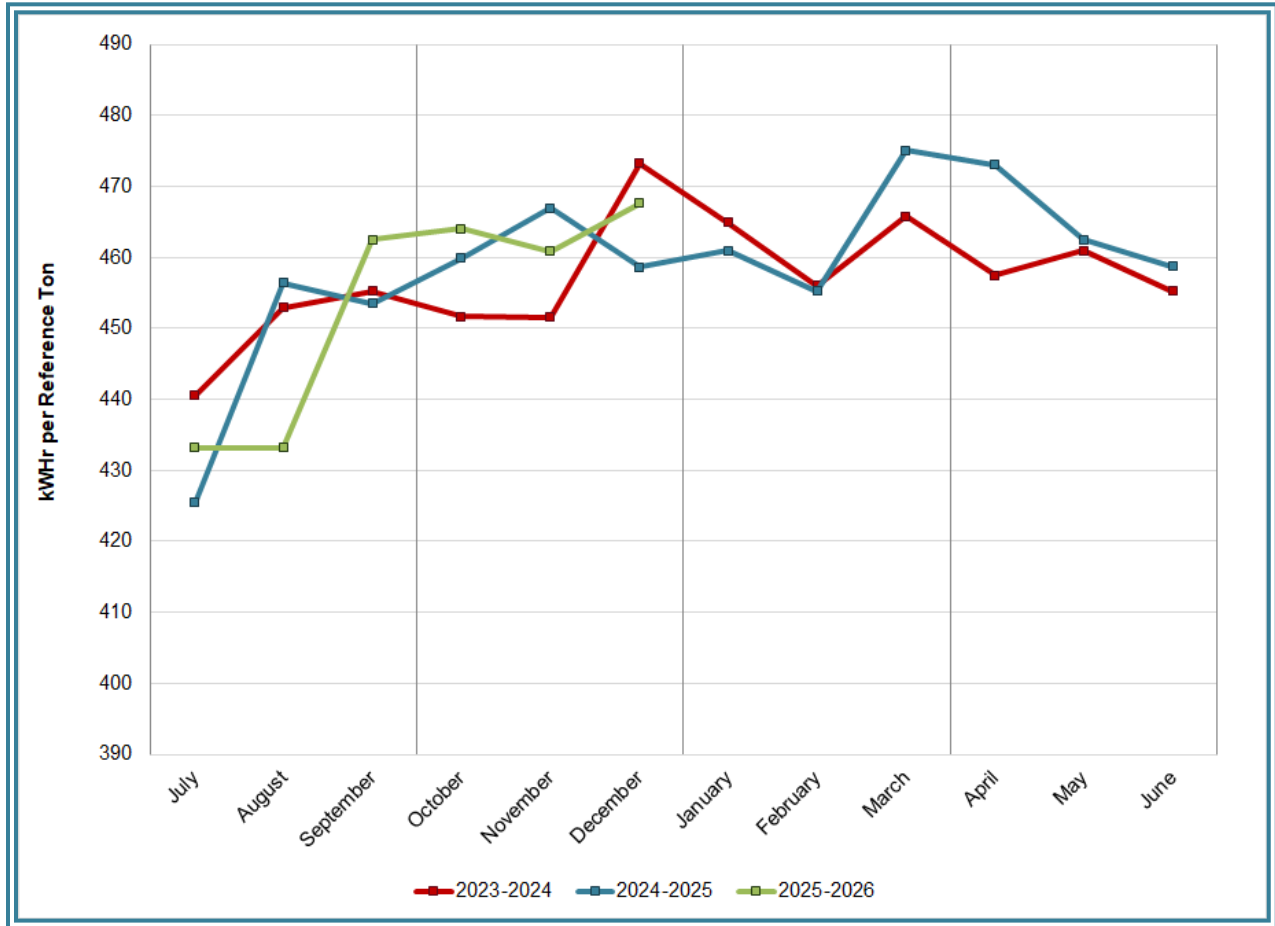
As depicted in Table 3 and Chart 9, Q2FY26 total waste delivery was 2.0% lower compared to cumulative waste deliveries through December in FY25.

Chart 10: Gross Electrical Generation



During Q2FY26, the Facility generated 44,295 MWh (gross) of electricity compared to the corresponding quarter in FY25 generation of 43,027 MWh (gross), a 2.9% increase. The increase in gross electrical production is attributable to the increase in steam production (3.5%) paired with less (92.7 hours) turbine generator downtime.

Chart 11: Gross Conversion Rate



As shown in Chart 11, the average gross electrical generation per reference ton of refuse processed during Q2FY26 was 464 kWh per reference ton, which is 0.5% more than the corresponding quarter in FY25.

Chart 12: Net Conversion Rate

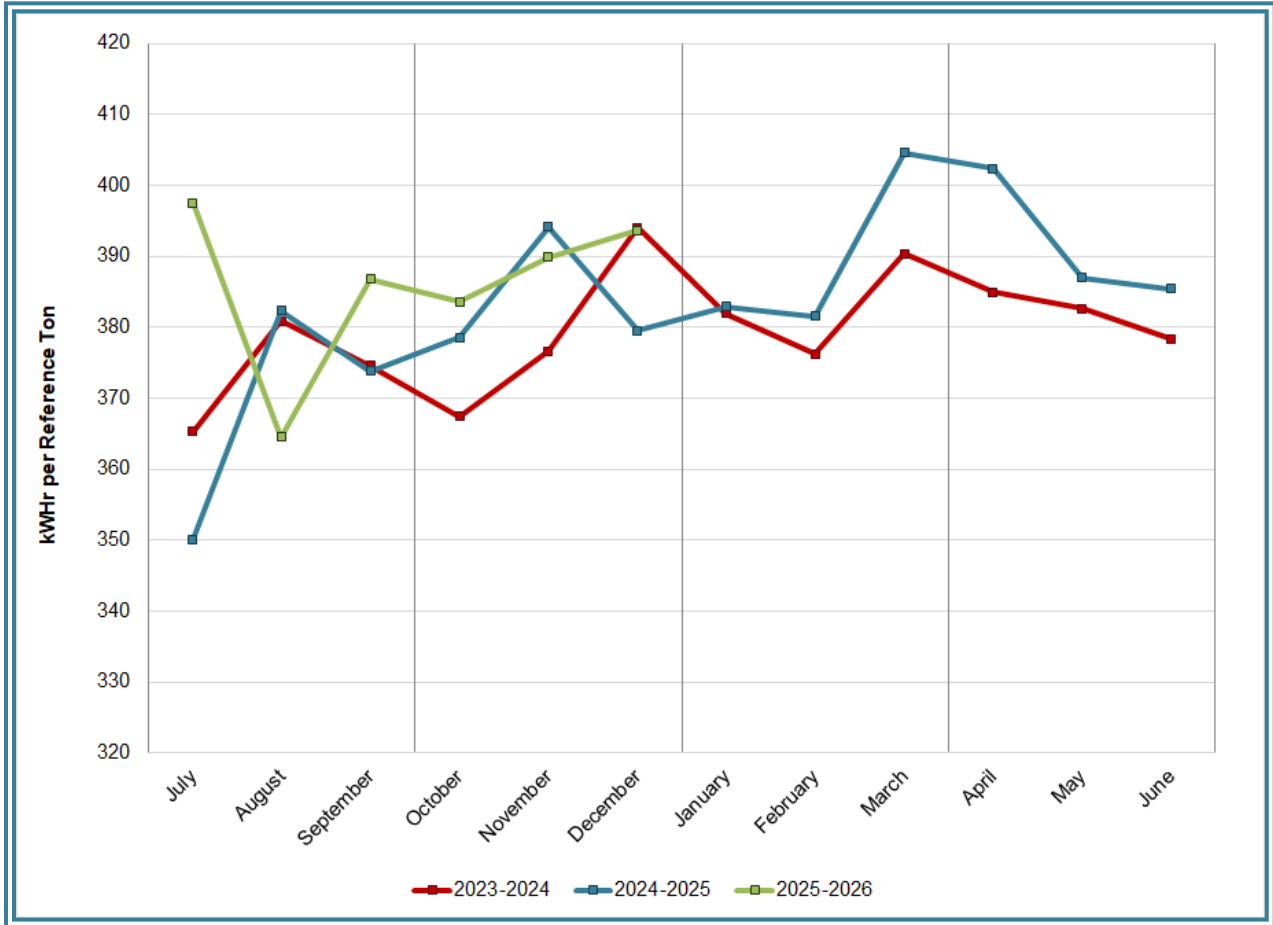


Chart 12 depicts the normalized net power generation (gross minus in-house usage). In Q2FY26, the average net electrical generation per reference ton was 389 kWh per ton, which is 1.3% higher than the corresponding quarter in FY25.

Chart 13: Net Conversion Rate

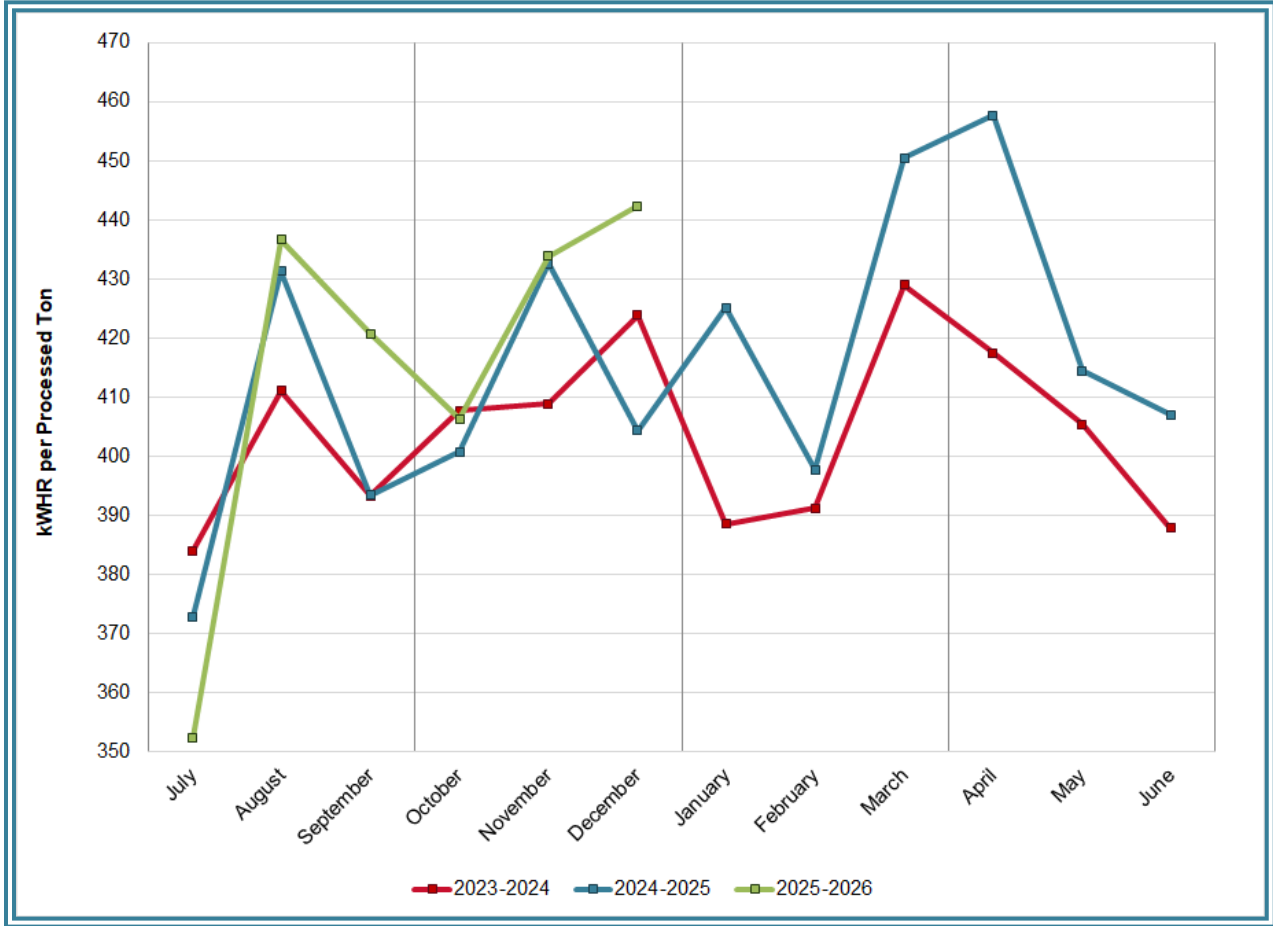


Chart 13 depicts the net power generation per processed ton. The net electrical generation per processed ton in Q2FY26 was 428 kWh per ton, which is 3.6% higher than corresponding quarter in FY25 due to less turbine generator downtime.

Chart 14: Gross Turbine Generator Conversion Rate

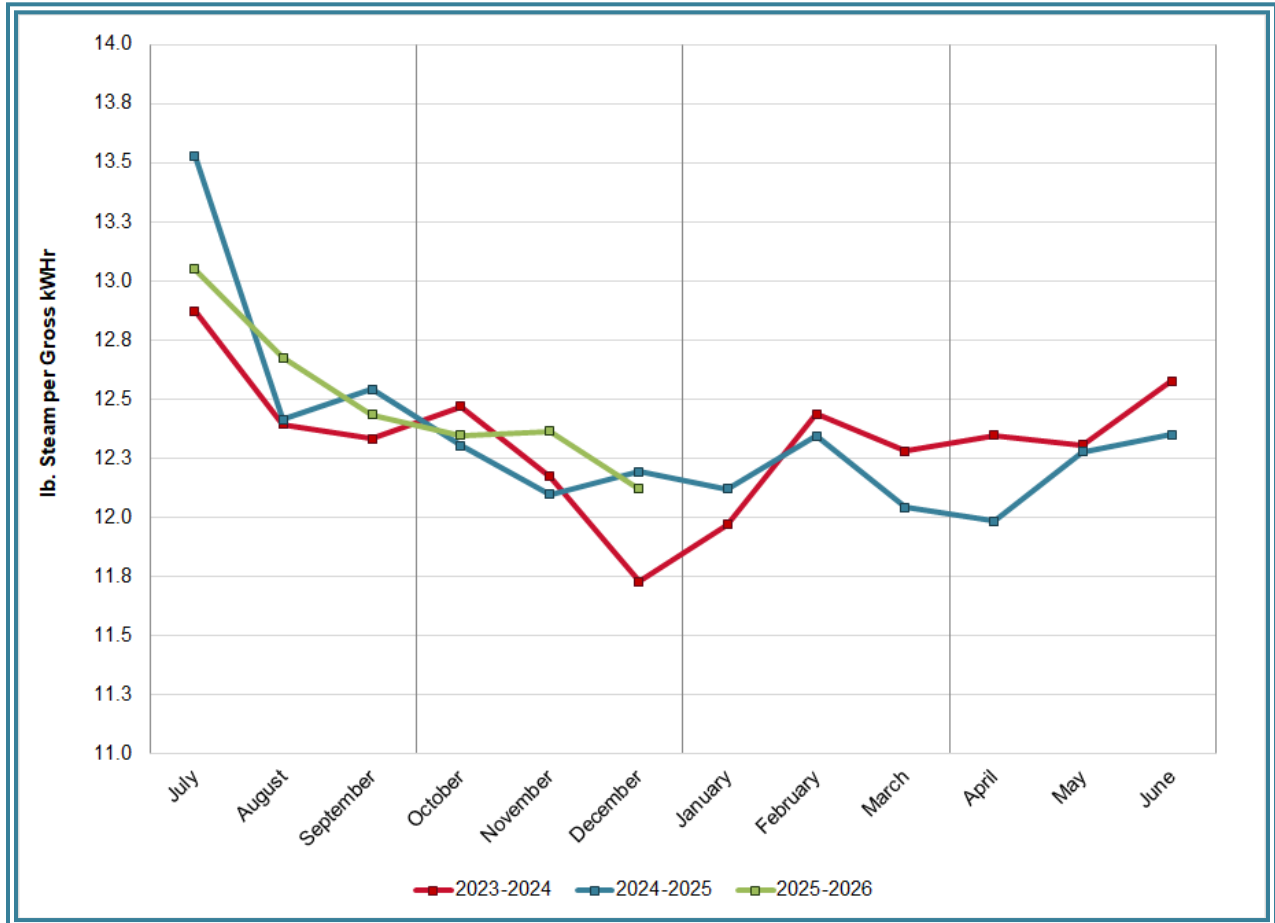


Chart 14 illustrates the quantities of steam required to generate one (1) kWh of electricity. This measure is a turbine generator performance indicator, where lower steam rates indicate superior performance. For simplification, this calculated rate is based on the average for the two turbine generators. In Q2FY26 the average pounds of steam consumed per gross kWh generated was 12.3, which is slightly higher (0.7%), and less efficient than the corresponding quarter in FY25 (12.2). The average main steam temperature during the quarter was 677.1°F, which is 9.6°F lower than the average main steam temperature of the corresponding quarter last fiscal year and 22.9°F lower than design temperature of 700 °F.

3.2 Utility and Reagent Consumptions

Table 4: Facility Utility and Reagent Consumptions

| Utility | Units | Q2FY26 Total | Q2FY25 Total | Q2FY26 "Per Processed Ton" Consumption | Q2FY25 "Per Processed Ton" Consumption |
|-----------------------|-------|--------------|--------------|--|--|
| Fuel Oil | Gal. | 15,210 | 13,770 | 0.4 | 0.2 |
| Boiler Make-up | Gal. | 1,632,000 | 1,472,000 | 18.8 | 17.0 |
| Cooling Tower Make-up | Gal. | 41,358,852 | 40,334,344 | 476.8 | 465.2 |
| Pebble Lime | Lbs. | 1,506,000 | 1,418,000 | 17.4 | 16.4 |
| Ammonia | Lbs. | 204,000 | 184,000 | 2.4 | 2.1 |
| Carbon | Lbs. | 66,000 | 72,000 | 0.8 | 0.8 |

Fuel oil usage during the quarter represents approximately 0.24% of the total heat input to the boilers, which compares favorably with industry averages, and is nearly identical to the 0.23% of total heat input in Q2FY25. Fuel oil is used to stabilize combustion of wet fuel, as well as during start-up and shutdown of the boilers. Boiler makeup water usage during the quarter represents 2.5% of steam flow, which is slightly higher than the boiler makeup in Q2FY25 (2.3% of steam flow). Higher boiler makeup quantities are indicative of increased steam leakage.

In comparing Q2FY26 to Q2FY25 on a per processed ton consumption basis:

- The total fuel oil consumption rate was 10.5% higher
- The boiler make-up water consumption rate was 10.9% higher
- The cooling tower make-up water consumption rate was 2.5% higher
- The total pebble lime consumption rate was 6.2% higher
- The ammonia consumption rate was 10.9% higher
- The carbon consumption rate was 8.3% lower

3.3 Safety & Environmental Training

The Facility experienced no OSHA recordable accidents and no First Aid Accidents during Q2FY26. As of December 31, 2025, RAAI has operated 92 days without an OSHA recordable accident. Safety training was conducted during the quarter with themes as follows:

October 2025

- Hand Safety

November 2025

- Respiratory Protection

December 2025

- Lock Out Tag Out

4.0 Facility Maintenance

Throughout the quarter, regular routine and preventative maintenance was performed. HDR considers that the Facility is implementing an effective maintenance regimen, and is performing routine and preventative maintenance, along with selected equipment replacements in a timely manner. Boiler No. 1 experienced 193.5 hours of downtime beginning on October 10, 2026, for scheduled maintenance. The following are significant maintenance items completed during the outage:

- Completed baghouse bag change
- Replaced two waterwall panels
- Feedchute and transition chute replacement on three sides.

In addition to the Major Boiler No. 1 Outage and the scheduled cleaning outage on Boiler No. 2, RAAI reports that 1,309 preventative maintenance actions were completed during the quarter.

4.1 Availability

Facility availabilities for Q2FY26 are shown in Table 5. According to RAAI reports, the average availability for Boiler Nos. 1, 2, and 3 for Q2FY26 was 89.9%, 94.4%, and 97.4%, respectively. The three-boiler average availability during the quarter was 93.9%, which is excellent compared to industry standard averages.

According to RAAI reports, the average availabilities for Turbine Generator 1 and 2 for Q2FY26 was 100% and 99.2%, respectively. Note that 177.4 hours of standby time was experienced by the Turbine Generators during the quarter and does not factor into overall availability.

Table 5: Quarterly Facility Unit Availabilities

| Availability | Q1FY26 Average | Q2FY26 Average | FY26 YTD Average |
|---------------|----------------|----------------|------------------|
| Boiler No. 1 | 93.7% | 89.9% | 91.8% |
| Boiler No. 2 | 96.5% | 94.4% | 95.5% |
| Boiler No. 3 | 93.6% | 97.4% | 95.5% |
| Avg. | 94.6% | 93.9% | 94.3% |
| Turbine No. 1 | 99.1% | 100.0% | 99.6% |
| Turbine No. 2 | 99.8% | 99.2% | 99.5% |
| Avg. | 99.5% | 99.6% | 99.5% |

Table 6: Boiler Downtime – Q2FY26

| Boiler Number | Outage Begin Date | Outage End Date | Hours Unavailable | Downtime Classification | Reason Unavailable |
|-----------------------------------|-------------------|-----------------|-------------------|-------------------------|------------------------|
| 1 | 10/10/2025 | 10/18/2025 | 193.5 | Scheduled | Major Scheduled Outage |
| 3 | 10/3/2025 | 10/3/2025 | 20.3 | Unscheduled | Waterwall Tube Leak |
| 3 | 10/27/2025 | 10/28/2025 | 36.2 | Unscheduled | Drain Line Repair |
| 2 | 11/9/2025 | 11/12/2025 | 70.8 | Scheduled | Scheduled Cleaning |
| 1 | 12/19/2025 | 12/21/2025 | 30.3 | Unscheduled | Grate Bar Failure |
| 2 | 12/24/2025 | 12/27/2025 | 52.1 | Unscheduled | Grate Bar Failure |
| Total Unscheduled Downtime | | | | | 138.8 Hours |
| Total Scheduled Downtime | | | | | 264.3 Hours |
| Total Standby Downtime | | | | | 0 Hours |
| Total Downtime | | | | | 403.1 Hours |

Table 7: Turbine Generator Downtime – Q2FY26

| Turbine Generator Number | Outage Begin Date | Outage End Date | Hours Unavailable | Downtime Classification | Reason Unavailable |
|-----------------------------------|-------------------|-----------------|--------------------|-------------------------|-------------------------------|
| 1 | 10/11/2025 | 10/15/2025 | 96.5 | Standby | Boiler Outage – Lack of Steam |
| 2 | 10/15/2025 | 10/18/2025 | 80.9 | Standby | Boiler Outage – Lack of Steam |
| 2 | 12/4/2025 | 12/4/2025 | 18.8 | Unscheduled | Condenser Tube Failure |
| Total Unscheduled Downtime | | | 18.8 Hours | | |
| Total Scheduled Downtime | | | 0.0 Hours | | |
| Total Standby Downtime | | | 177.4 Hours | | |
| Total Downtime | | | 196.2 Hours | | |

4.2 Facility Housekeeping

RAAI is performing Facility housekeeping and maintaining plant cleanliness in accordance with acceptable industry practices. A site walkdown was conducted in January 2026. Photos of interest from the walkdown are depicted in Appendix B. The Facility housekeeping ratings from the January 2026 walkdown are presented in Table 8.

Table 8: Facility Housekeeping Ratings – January 2026

| Facility Area | Acceptable | Needs Improvement | Unacceptable |
|--------------------------|------------|-------------------|--------------|
| Tipping Floor | √ | | |
| Citizen’s Drop-off Area | √ | | |
| Tipping Floor Truck Exit | √ | | |
| Front Parking Lot | √ | | |
| Rear Parking Lot | √ | | |
| Boiler House Pump Room | √ | | |
| Lime Slurry Pump Room | √ | | |
| Switchgear Area | √ | | |
| Ash Load-out Area | √ | | |
| Vibrating Conveyor Area | √ | | |
| Ash Discharger Area | √ | | |
| Cooling Tower Area | √ | | |
| Truck Scale Area | √ | | |
| SDA/FF Conveyor Area | √ | | |
| SDA Penthouses | √ | | |
| Lime Preparation Area | √ | | |
| Boiler Drum Levels | √ | | |
| Turbine Room | √ | | |
| Electrical Room | √ | | |

5.0 Environmental

The air pollution control equipment-maintained emission concentrations well within the established regulations. Average Continuous Emission Monitoring System (CEMS) data collected for each monthly period during Q2FY26 are summarized in Appendix A. The Facility experienced no permit deviations during Q2FY26. As of December 31, 2025, the Facility has operated 226 days without an environmental excursion.

5.1 Nitrogen Oxide Emissions

During Q2FY26, the monthly emission concentrations of nitrogen oxides (NO_x) averaged 86.7 ppm, 88.0 ppm, and 87.3 ppm for Boiler Nos. 1, 2, and 3, respectively. All stack NO_x concentrations remain below the permit limit (110 ppm, 24-hr average, @ 7% O₂) implemented after the installation of the LN system. The ammonia consumption rate during the quarter was 2.4 lbs/ton, which within historical consumption rates that have ranged from 1.9 lbs/ton to 2.6 lbs/ton since the implementation of the LN system (2022) on all boilers..

5.2 Sulfur Dioxide Emissions

During Q2FY26 the monthly emission concentration of stack sulfur dioxide (SO₂) averaged 1.3 ppm, 1.0 ppm, and 0.7 ppm for Boiler Nos. 1, 2, and 3, respectively. All these stack SO₂ concentrations are significantly below the permit limit of 29 ppm @ 7% O₂.

5.3 Carbon Monoxide Emissions

During Q2FY26, the monthly average CO emission concentrations on Boiler Nos. 1, 2, and 3 were 25.0 ppm, 33.7 ppm, and 27.3 ppm, respectively, and all are well within permit limits (100 ppmdv, 4-hour average).

5.4 Opacity

During Q2FY26, the average opacities on Boiler Nos. 1, 2, and 3 were 1.1%, 0.7%, and 1.2%, respectively, which are all significantly below the 10% (6-minute) average permit limit.

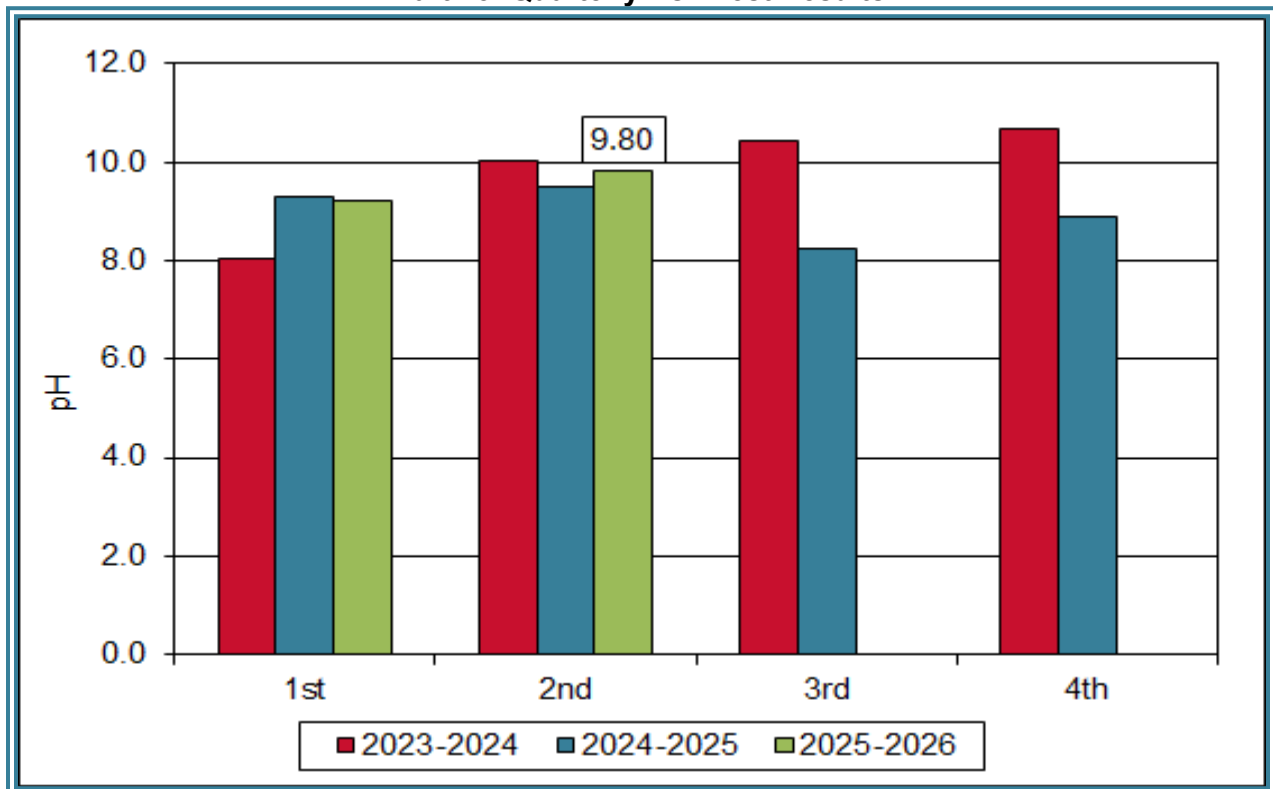
5.5 Daily Emissions Data

Appendix A, Tables 10, 11, and 12 tabulate the monthly average, maximum, and minimum emissions data for each unit during Q2FY26. Excursions appear in bold print. It should be noted that these tabulations of monthly averages, reported here for informational purposes, are based on tabulations of daily averages. These averages do not correlate with official reports to the regulatory agencies because of differences in averaging times and other technical differences required by agency report formats.

5.6 Ash System Compliance

RAAI continued to sample ash monthly in-house, and document pH readings and adjust lime feed rate as needed. The results for the in-house ash pH tests are depicted below in Chart 15 where each quarter is represented by the average of the respective monthly readings. In Q2FY26, the average ash pH for in-house tests was 9.8, which falls within the target range of 8 to 11.

Chart 15: Quarterly Ash Test Results



APPENDIX A FACILITY CEMS DATA

Table 9: Boiler No. 1 Monthly Summary for Reportable Emissions Data

| Group#-Channel# | G8-C35 | G8-C28 | G8-C8 | G8-C4 | G8-C12 | G8-C34 | G8-C37 | G8-C40 | G8-C39 | |
|--------------------------|-----------|--------------------|--------------------|-----------|--------------------|-----------|-----------|-----------|----------|-----|
| Long Descrip. | U-1 Steam | U-1 Econ | U-1 Stack | U-1 Stack | U-1 Stack | U-1 Opaci | U-1 FF In | U-1 Carbo | U-1 Lime | |
| Short Descrip. | SteamFl | SO ₂ ec | SO ₂ sc | COsc | NO _x sc | Opacity | FF InTemp | CarbInj | LimeFlow | |
| Units | K#/Hr | ppmc | ppm | ppmc | ppmc | % | deg F | #/hr | gpm | |
| Range | 0-100 | 0-2000 | 0-500 | 0-4000 | 0-1000 | 0-100 | 100-500 | 0-50 | 0-20 | |
| Oct – 25 | AVG | 83.3 | 48.0 | 1.0 | 25.0 | 87.0 | 0.7 | 296.0 | 10.3 | 3.3 |
| | Max | 91.0 | 89.0 | 3.0 | 42.0 | 91.0 | 1.3 | 303.0 | 10.4 | 3.8 |
| | Min | 75.0 | 20.0 | 0.0 | 15.0 | 78.0 | 0.1 | 266.0 | 10.2 | 2.6 |
| Nov – 25 | AVG | 91.7 | 50.0 | 1.0 | 26.0 | 87.0 | 1.2 | 298.0 | 10.4 | 3.8 |
| | Max | 93.5 | 79.0 | 5.0 | 39.0 | 91.0 | 1.8 | 299.0 | 11.1 | 4.5 |
| | Min | 89.7 | 36.0 | 0.0 | 10.0 | 84.0 | 0.8 | 298.0 | 10.4 | 3.0 |
| Dec - 25 | AVG | 90.4 | 27.0 | 2.0 | 24.0 | 86.0 | 1.5 | 298.0 | 10.3 | 3.7 |
| | Max | 93.5 | 43.0 | 3.0 | 39.0 | 89.0 | 2.5 | 299.0 | 10.5 | 4.6 |
| | Min | 81.6 | 13.0 | 0.0 | 8.0 | 85.0 | 0.4 | 296.0 | 10.2 | 2.7 |
| Quarter Average | | 88.5 | 0.0 | 1.3 | 25.0 | 86.7 | 1.1 | 297.3 | 10.3 | 3.6 |
| Quarter Max Value | | 93.5 | 89.0 | 5.0 | 42.0 | 91.0 | 2.5 | 303.0 | 11.1 | 4.6 |
| Quarter Min Value | | 75.0 | 13.0 | 0.0 | 8.0 | 78.0 | 0.1 | 266.0 | 10.2 | 2.6 |
| Limits: | | 99 | NA | 29 | 100 | 110 | 10 | 331 | 12(a) | |

(a) Carbon flow limit is a minimum value

(b) Limit for NO_x is based on an average daily limit

* Note: The data reported herein represent 24-hour average data for all parameters. Emissions excursions that are measured on shorter time intervals (i.e., 4-hour block averages for CO) do not correlate with the 24-hour average data reported above.

Table 10: Boiler No. 2 Monthly Summary for Reportable Emissions Data

| Group#-Channel# | G8-C35 | G8-C28 | G8-C8 | G8-C4 | G8-C12 | G8-C34 | G8-C37 | G8-C40 | G8-C39 | |
|--------------------------|-----------|--------------------|--------------------|-----------|--------------------|-----------|-----------|-----------|----------|-----|
| Long Descrip. | U-2 Steam | U-2 Econ | U-2 Stack | U-2 Stack | U-2 Stack | U-2 Opaci | U-2 FF In | U-2 Carbo | U-2 Lime | |
| Short Descrip. | SteamFl | SO ₂ ec | SO ₂ sc | COsc | NO _x sc | Opacity | FF InTemp | CarbInj | LimeFlow | |
| Units | K#/Hr | ppmc | ppm | ppmc | ppmc | % | deg F | #/hr | gpm | |
| Range | 0-100 | 0-2000 | 0-500 | 0-4000 | 0-1000 | 0-100 | 100-500 | 0-50 | 0-20 | |
| Oct – 25 | AVG | 81.1 | 38.0 | 1.0 | 31.0 | 88.0 | 0.7 | 297.0 | 10.3 | 3.3 |
| | Max | 89.4 | 64.0 | 8.0 | 46.0 | 90.0 | 0.9 | 299.0 | 11.0 | 3.8 |
| | Min | 69.8 | 24.0 | 0.0 | 19.0 | 86.0 | 0.3 | 293.0 | 10.2 | 2.8 |
| Nov – 25 | AVG | 89.9 | 49.0 | 1.0 | 36.0 | 88.0 | 0.8 | 295.0 | 10.2 | 3.7 |
| | Max | 92.4 | 66.0 | 3.0 | 54.0 | 91.0 | 1.2 | 297.0 | 10.8 | 4.2 |
| | Min | 80.0 | 28.0 | 0.0 | 20.0 | 85.0 | 0.5 | 279.0 | 10.2 | 2.9 |
| Dec - 25 | AVG | 89.0 | 35.0 | 1.0 | 34.0 | 88.0 | 0.6 | 295.0 | 10.2 | 3.7 |
| | Max | 91.7 | 51.0 | 3.0 | 46.0 | 90.0 | 1.0 | 298.0 | 10.3 | 4.7 |
| | Min | 81.2 | 21.0 | 0.0 | 20.0 | 84.0 | 0.3 | 289.0 | 10.2 | 2.7 |
| Quarter Average | | 86.7 | 40.7 | 1.0 | 33.7 | 88.0 | 0.7 | 295.7 | 10.2 | 3.6 |
| Quarter Max Value | | 92.4 | 66.0 | 8.0 | 54.0 | 91.0 | 1.2 | 299.0 | 11.0 | 4.7 |
| Quarter Min Value | | 69.8 | 21.0 | 0.0 | 19.0 | 84.0 | 0.3 | 279.0 | 10.2 | 2.7 |
| Limits: | | 98 | NA | 29 | 100 | 110 | 10 | 330 | 12(a) | |

(a) Carbon flow limit is a minimum value

(b) Limit for NO_x is based on an average daily limit

* Note: The data reported herein represent 24-hour average data for all parameters. Emissions excursions that are measured on shorter time intervals (i.e., 4-hour block averages for CO) do not correlate with the 24-hour average data reported above.

Table 11: Boiler No. 3 Monthly Summary for Reportable Emissions Data

| Group#-Channel# | G8-C35 | G8-C28 | G8-C8 | G8-C4 | G8-C12 | G8-C34 | G8-C37 | G8-C40 | G8-C39 | |
|--------------------------|-----------|--------------------|--------------------|-----------|--------------------|-----------|-----------|-----------|----------|-----|
| Long Descrip. | U-3 Steam | U-3 Econ | U-3 Stack | U-3 Stack | U-3 Stack | U-3 Opaci | U-3 FF In | U-3 Carbo | U-3 Lime | |
| Short Descrip. | SteamFl | SO ₂ ec | SO ₂ sc | COsc | NO _x sc | Opacity | FF InTemp | CarbInj | LimeFlow | |
| Units | K#/Hr | ppmc | ppm | ppmc | ppmc | % | deg F | #/hr | gpm | |
| Range | 0-100 | 0-2000 | 0-500 | 0-4000 | 0-1000 | 0-100 | 100-500 | 0-50 | 0-20 | |
| Oct – 25 | AVG | 81.3 | 46.0 | 2.0 | 18.0 | 86.0 | 1.3 | 299.0 | 10.5 | 3.5 |
| | Max | 90.8 | 71.0 | 11.0 | 33.0 | 89.0 | 2.0 | 300.0 | 11.2 | 3.9 |
| | Min | 69.5 | 28.0 | 0.0 | 8.0 | 77.0 | 0.8 | 297.0 | 10.0 | 2.9 |
| Nov – 25 | AVG | 90.6 | 28.0 | 0.0 | 31.0 | 88.0 | 1.8 | 299.0 | 10.6 | 3.8 |
| | Max | 92.5 | 46.0 | 2.0 | 48.0 | 90.0 | 2.6 | 300.0 | 11.0 | 4.3 |
| | Min | 88.4 | 18.0 | 0.0 | 19.0 | 85.0 | 1.1 | 298.0 | 10.2 | 2.8 |
| Dec - 25 | AVG | 88.4 | 27.0 | 0.0 | 33.0 | 88.0 | 0.6 | 299.0 | 10.6 | 3.9 |
| | Max | 91.6 | 47.0 | 5.0 | 59.0 | 90.0 | 1.1 | 301.0 | 11.5 | 4.8 |
| | Min | 79.4 | 15.0 | 0.0 | 20.0 | 87.0 | 0.3 | 298.0 | 10.4 | 2.8 |
| Quarter Average | | 86.8 | 33.7 | 0.7 | 27.3 | 87.3 | 1.2 | 299.0 | 10.6 | 3.7 |
| Quarter Max Value | | 92.5 | 71.0 | 11.0 | 59.0 | 90.0 | 2.6 | 301.0 | 11.5 | 4.8 |
| Quarter Min Value | | 69.5 | 15.0 | 0.0 | 8.0 | 77.0 | 0.3 | 297.0 | 10.0 | 2.8 |
| Limits: | | 98 | NA | 29 | 100 | 110 | 10 | 332 | 12(a) | |

- (a) Carbon flow limit is a minimum value
- (b) Limit for NO_x is based on an average daily limit

* Note: The data reported herein represent 24-hour average data for all parameters. Emissions excursions that are measured on shorter time intervals (i.e., 4-hour block averages for CO) do not correlate with the 24-hour average data reported above.

APPENDIX B

SITE PHOTOS - January 2026



Figure 1: Temporary generator in the front parking lot



Figure 2: Cooling tower appears to be in good condition



Figure 3: Dolomitic lime silo fill pipe marked out of service



Figure 4: Maintenance observed around ID fan motor



Figure 5: Maintenance observed around Carbon Silo hoses



Figure 6: Carbon silo appears to have minimal emissions



Figure 7: Temporary generator on North side of Facility



Figure 8: Spare rotor for under fire air fan



Figure 9: Unit 3 superheater tie ins for the primary and finishing bundles



Figure 10: Unit 3 spiral wound Inconel waterwall tube pendants



Figure 11: New Deficiency: External deodorizer not working

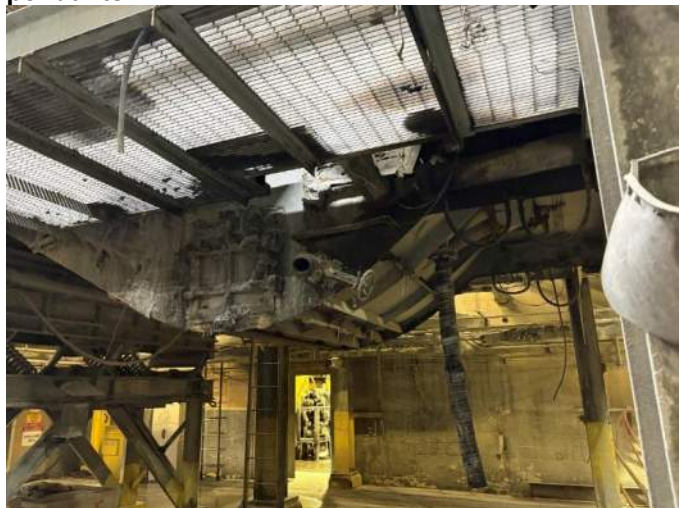


Figure 12: Unit 3 external ash discharger – no issues observed



Figure 13: Carbon booster blower system – no issues observed



Figure 14: Maintenance observed around the condenser



Figure 15: Vibrating conveyor area housekeeping in good condition

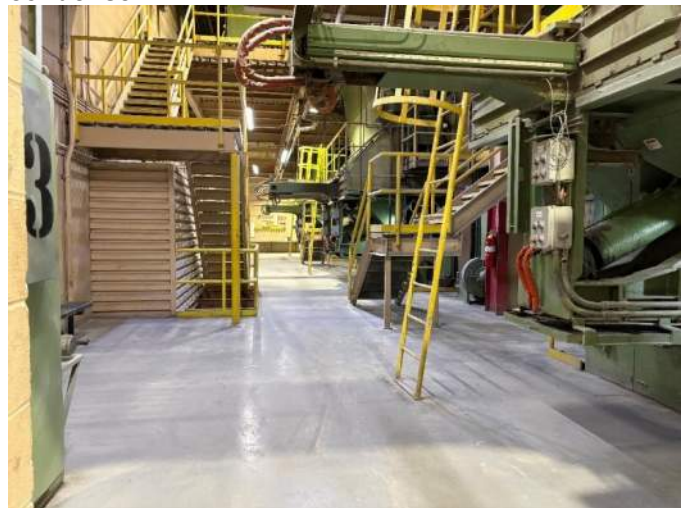


Figure 16: Firing aisle housekeeping in good condition



Figure 17: New Deficiency: Unit 2 transition chute shows previous repair and new crack in wall



Figure 18: New Deficiency: Unit 3 hole identified in the transition chute.

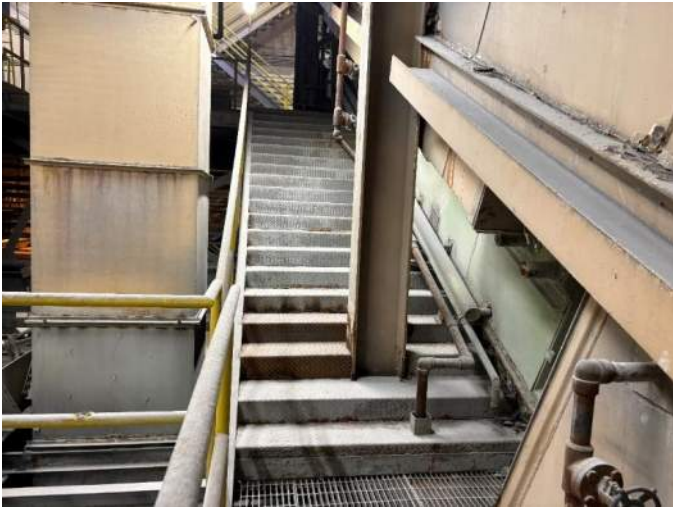


Figure 19: New stairs installed between Units 2 and 3 from barn door elevation to firing aisle



Figure 20: Wet ash prior to ferrous magnet



Figure 21: Updated Deficiency: Fan above deaerator observed operating



Figure 22: New silencer installed on steam vent piping



Figure 23: Updated Deficiency: Damaged insulation has worsened; new leak observed on the North side of Unit 3



Figure 24: All windows in tipping hall intact



Figure 25: Unit 2 baghouse hoppers and screw conveyors – no issues observed



Figure 26: Unit 3 SDA Penthouse Enclosure - poor housekeeping conditions



Figure 27: Lower lime silo floor corrosion



Figure 28: New Deficiency: Unit 1 SDA dump valves stuck in the open position without cage



Figure 29: Lime silo baghouse and cooling water tower deck – no issues observed



Figure 30: Updated Deficiency: Unit 3 baghouse hopper heaters; one remains in manual