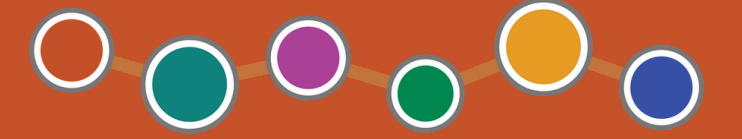


# PhotoVoice Project



DEPARTMENT OF  
PLANNING &  
ZONING

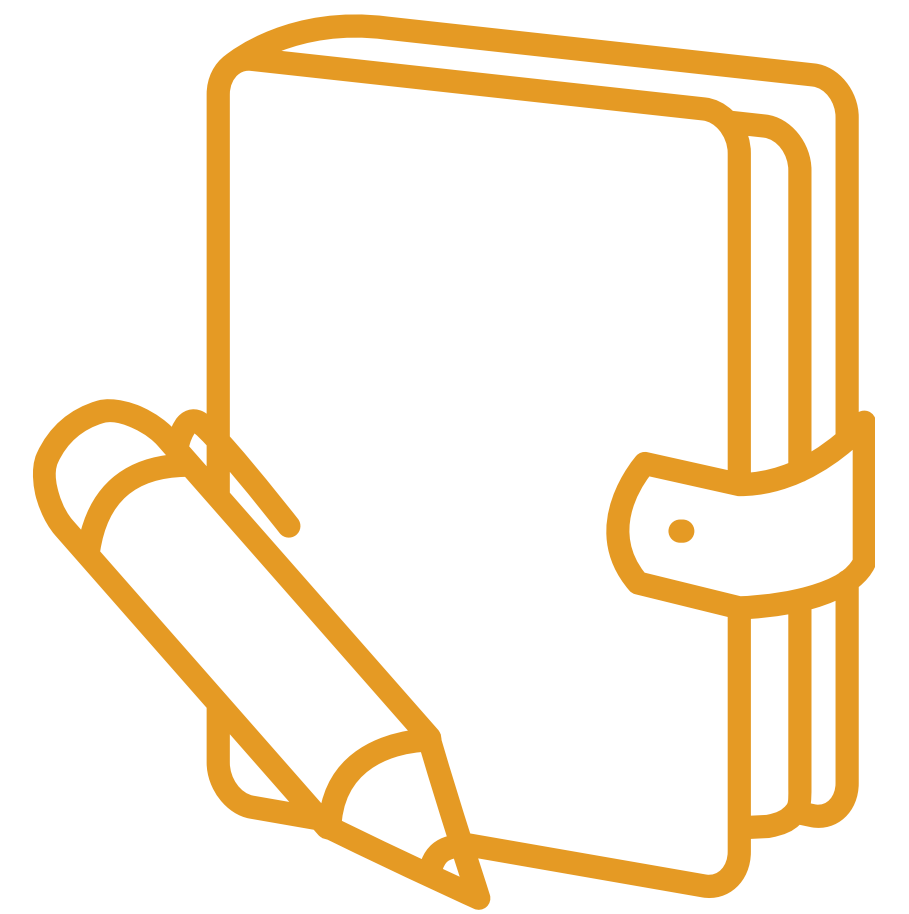
DUKE STREET  
LAND USE PLAN



Over the last several months, City staff worked with Alexandria City High School students in three International Academy Digital Applications classes with Ms. Gill on a **PhotoVoice** project.

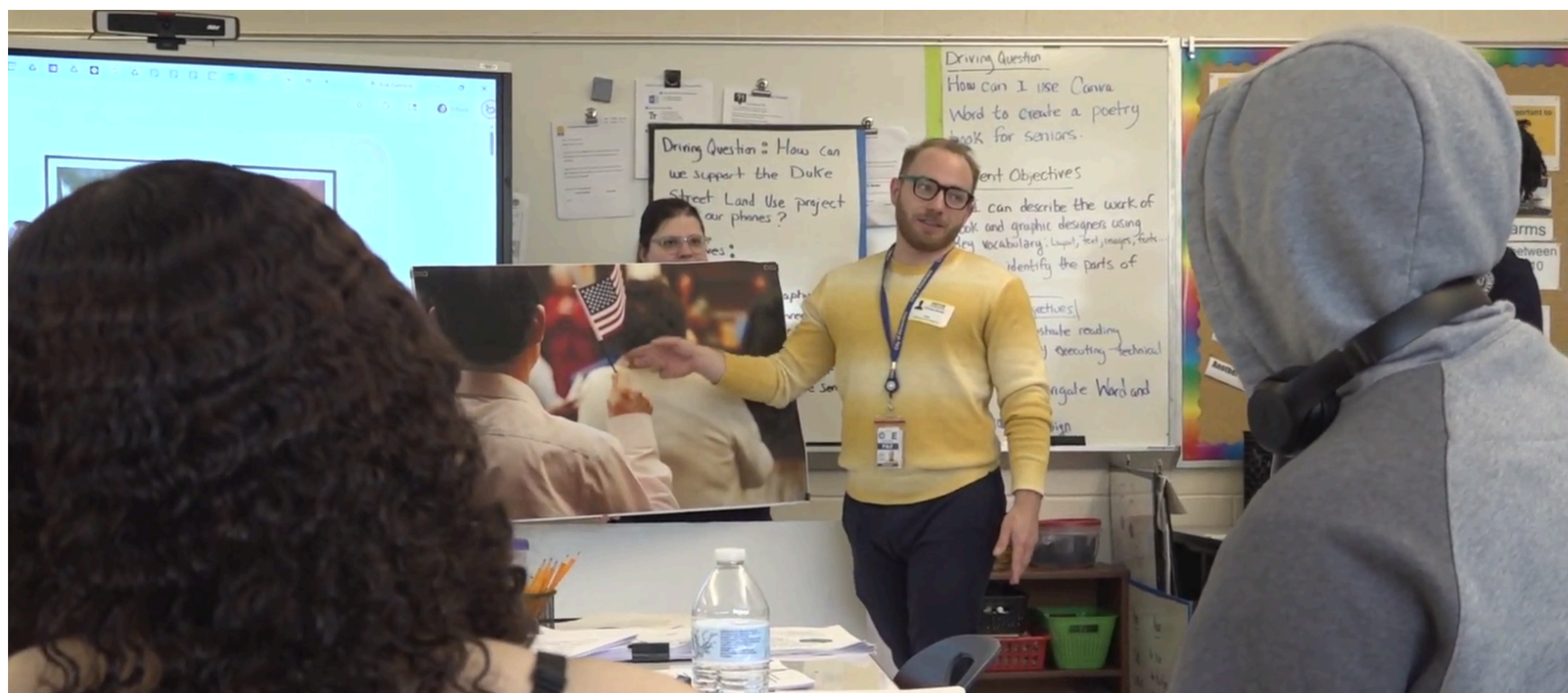
## What is PhotoVoice?

Photovoice is a **community-based** and **participatory** qualitative research method that is used in a variety of different contexts, often to capture the unique points of view of the photographers in response to questions about needs, challenges, experiences, and opportunities in their community.



## Photography 101

City Staff from Planning and Zoning and the Office of Communications and Community Engagement taught a Photography 101 session to each class where students took pictures of **places**, **things**, and **people** at the High School.



## PhotoVoice Assignment:

The work that you see in this showcase are the pictures that each participating student took and captioned as part of the PhotoVoice project. Students responded to the following questions to guide their photography:

- What do you see here?
- What's really happening here?
- What story is the photo telling?
- Why is this moment important to you or our class?
- Why does this situation exist?
- What can we do about it?



# Parcel Design Project



DEPARTMENT OF  
PLANNING &  
ZONING

**DUKE STREET  
LAND USE PLAN**

Starting in January of this year, City staff worked with Alexandria City High School students in Mr. Fitzpatrick's English class on a **Parcel Design** project.

## What is the Parcel Design Project?

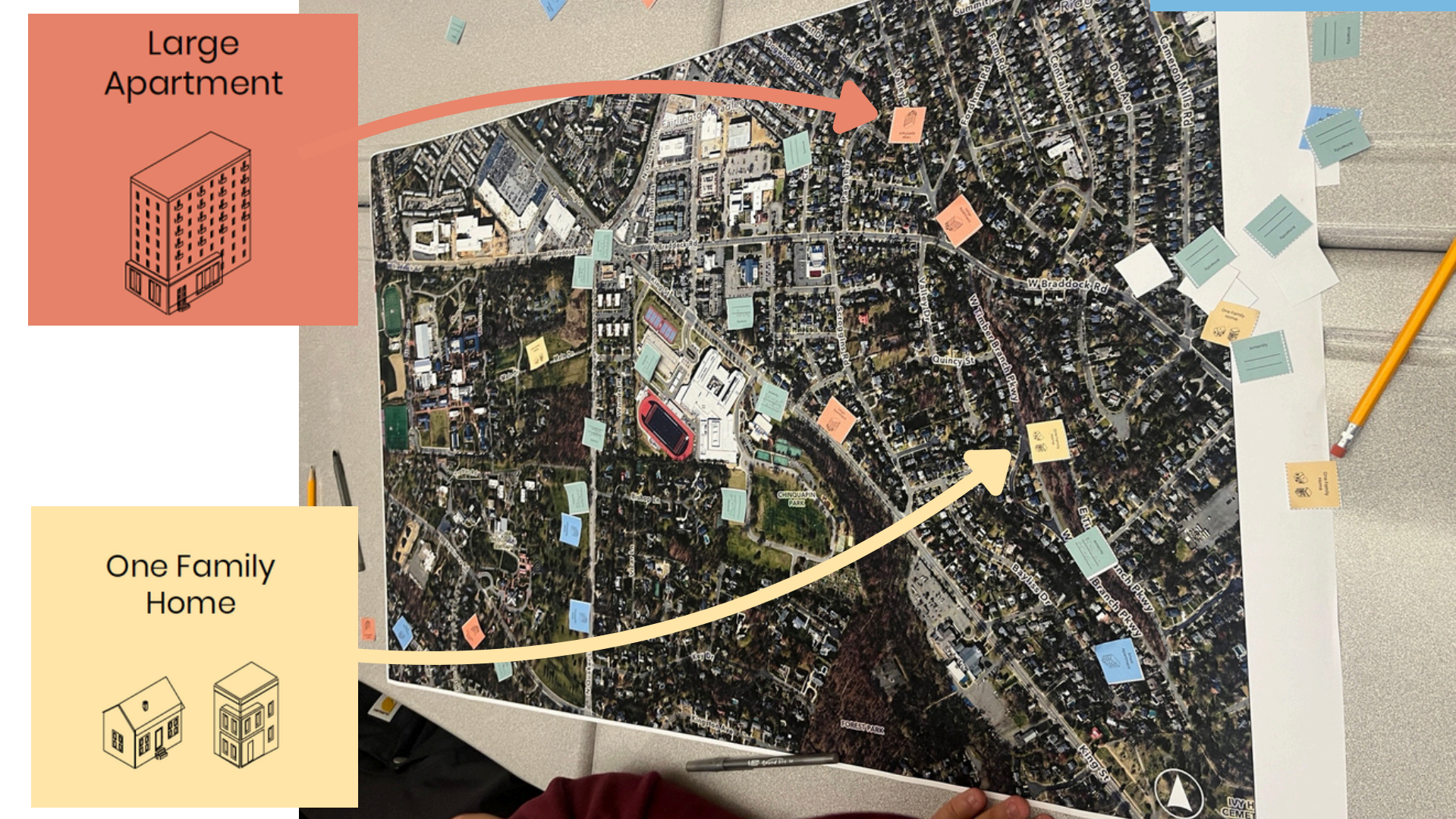
Students were asked to develop an idea for how to re-use underutilized or vacant parcels on Duke Street. In groups of four or five, students worked together to come up with unique ideas for each parcel and then pitched them to a panel of three Planning and Zoning Staff. Each parcel idea received feedback from P&Z staff as well as staff in the Office of Communications and Community Engagement, the Alexandria Community Shelter, the Workforce Development Office, and the Office of Housing.

## Parcel Locations:



## Parcel Design Practice

Before working on their own parcels, students learned how to think about neighborhoods from a planning perspective! Using a game created by the District of Columbia's Office of Planning, students worked together to propose land use alternatives to the area around Alexandria City High School.



## Parcel Design Pitches

Each student was assigned to one of the five parcels and worked as a team to create an idea for how to re-use their parcel. Students created a poster, which you can see displayed in this Showcase, and pitched their idea for feedback to City Staff.

Proposals included:

- Job Training Center
- Homeless Shelter
- Apartment Building
- Recording Studio
- Boxing and Fitness Studio

Each proposal had to include a project description and a description of the benefits it would provide to community members.

