



# Helsingborg

Erik Bredmar   Edvin Ramberg

Traffic planner   Traffic planner



Färöarna

Storbritannien

Glasgow • Edinburgh

Irland

Isle of Man

Dublin • Manchester

Birmingham • London

Nederländerna

Belgien

Luxemburg

Paris

Norge

Bergen

Oslo

Stavanger

Danmark

Köpenhamn

Hamburg

Tyskland

Prag

Tjeckien

Slovakien

Sverige

Uppsala

Stockholm

Göteborg

Polen

Warszawa

Kraków

Litauen

Vilnius

Riga

Lettland

Tallinn

Estland

Åbo

Tammerfors

Finland

Uleåborg

Belarus

Ukraina

Kiev  
Київ

Dnipro  
Дніпро

Moldavien

Vinnitsia  
Вінниця

Odessa

Moskva  
Москва

Sankt  
Petersburg  
Санкт-Петербург

Trondheim

Ålesunds  
kommun

Bottniska viken

Nordisjön

Östersjön

Chisinau

Chisinau

# Helsingborg

Almost 153 000 inhabitants

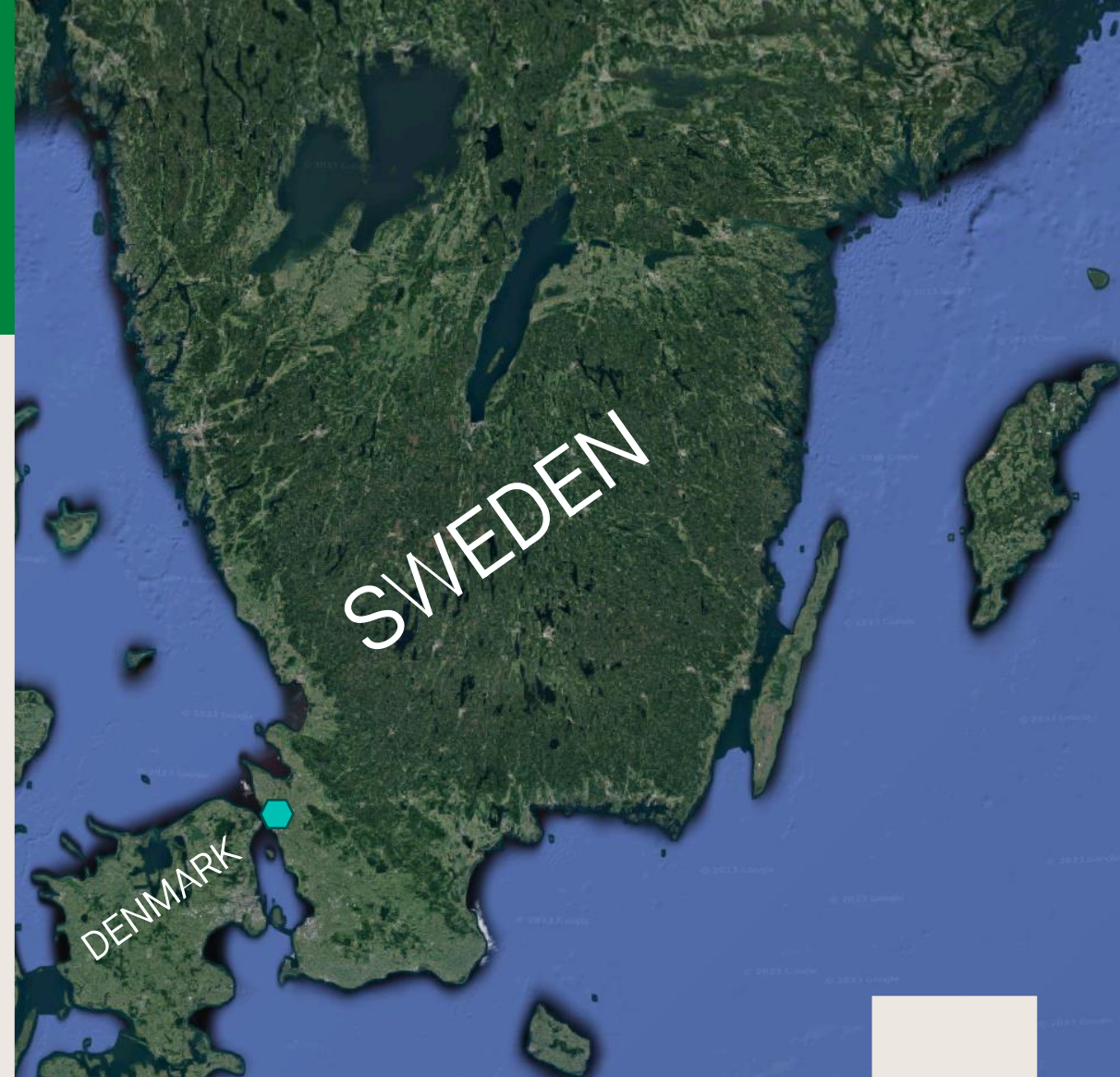
8th largest municipality in Sweden

Sweden's second largest freight harbour

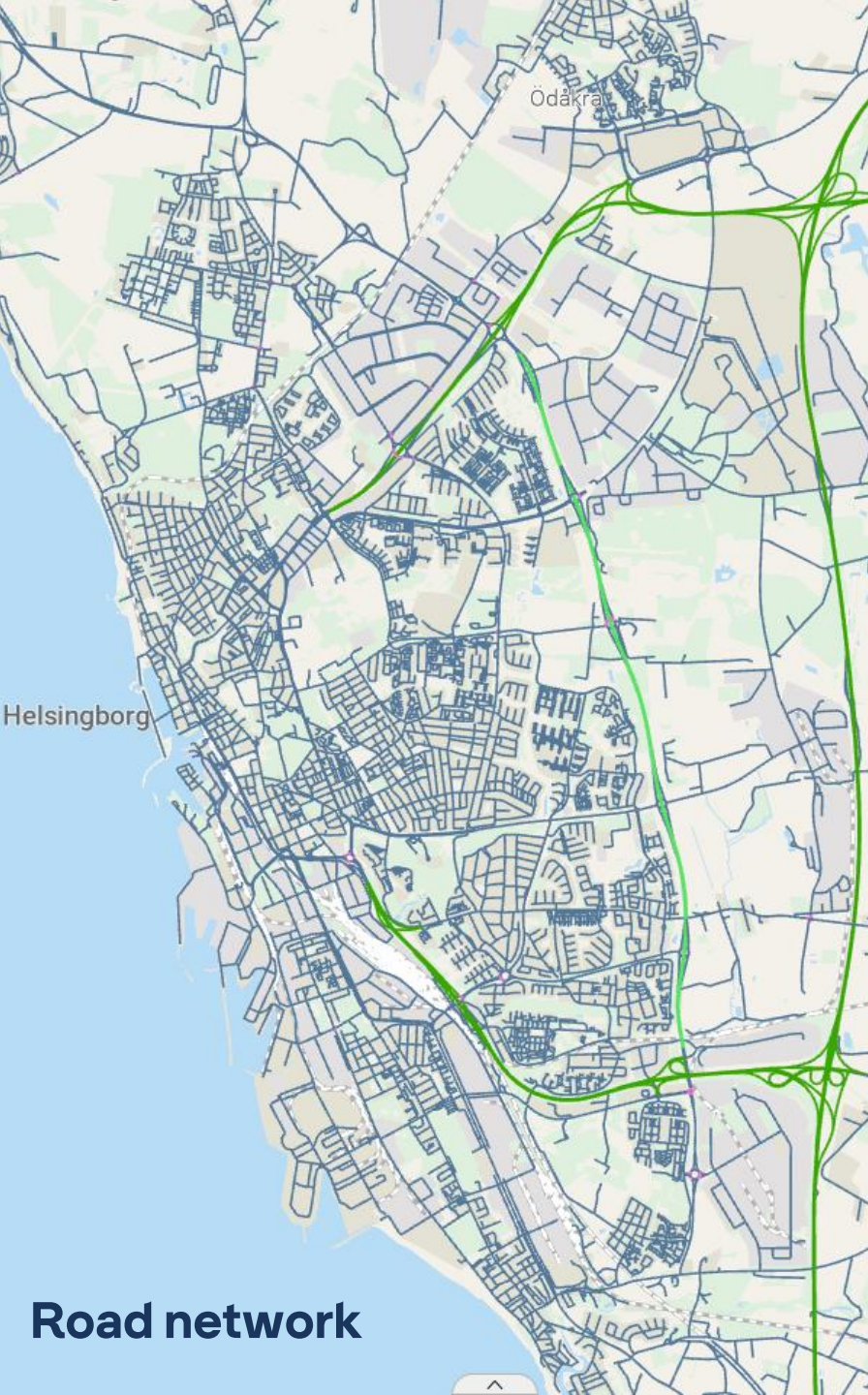
Trading and logistics are the main industries

Three European highways and three national railroads

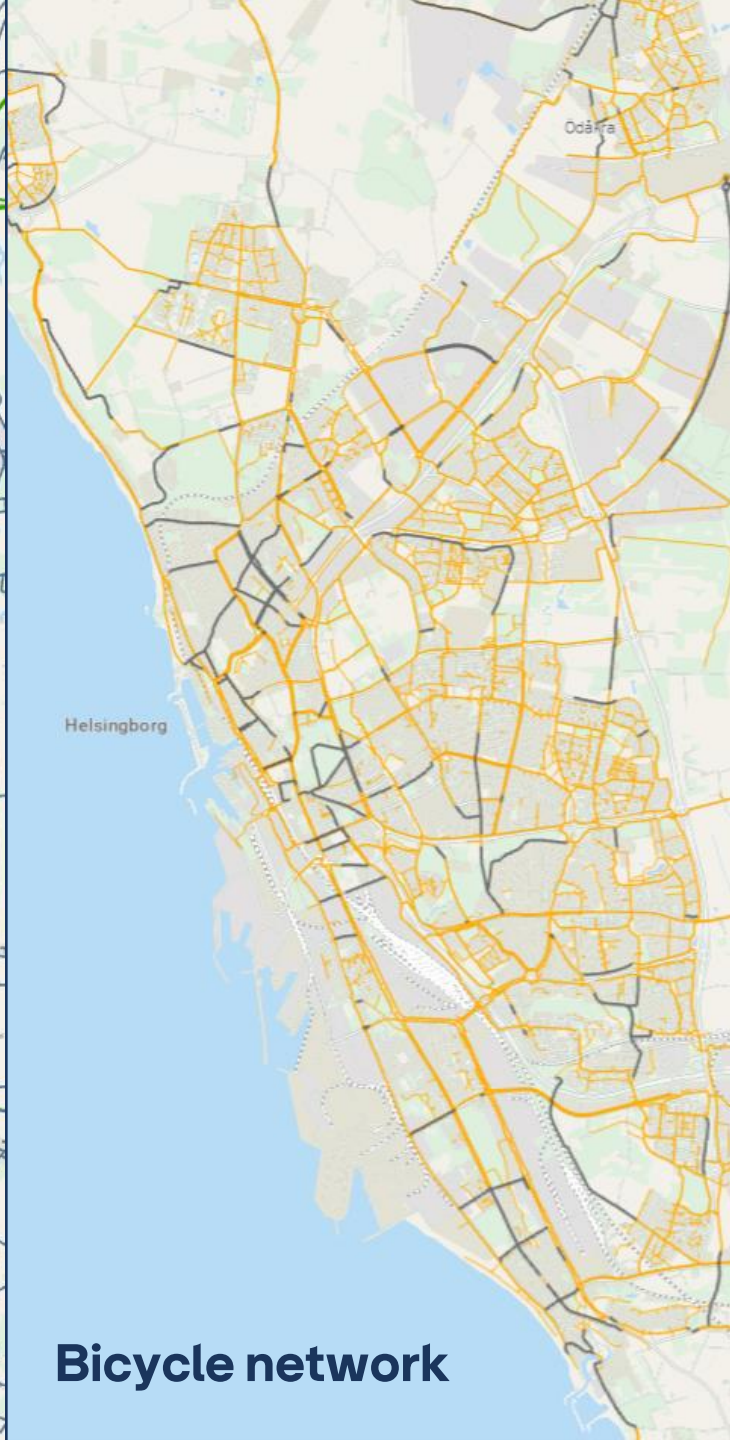
4 km to Denmark across the water



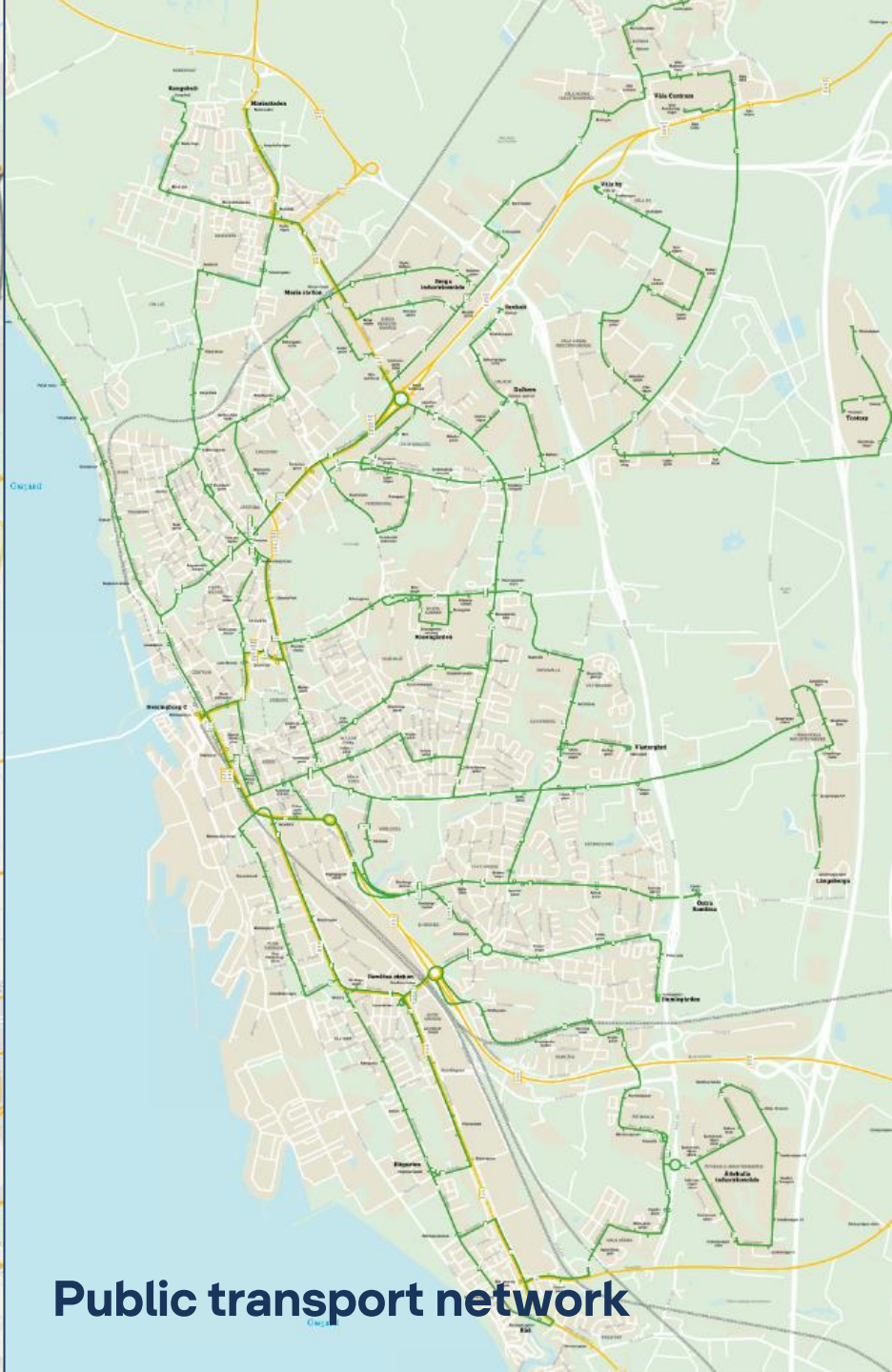




**Road network**



**Bicycle network**



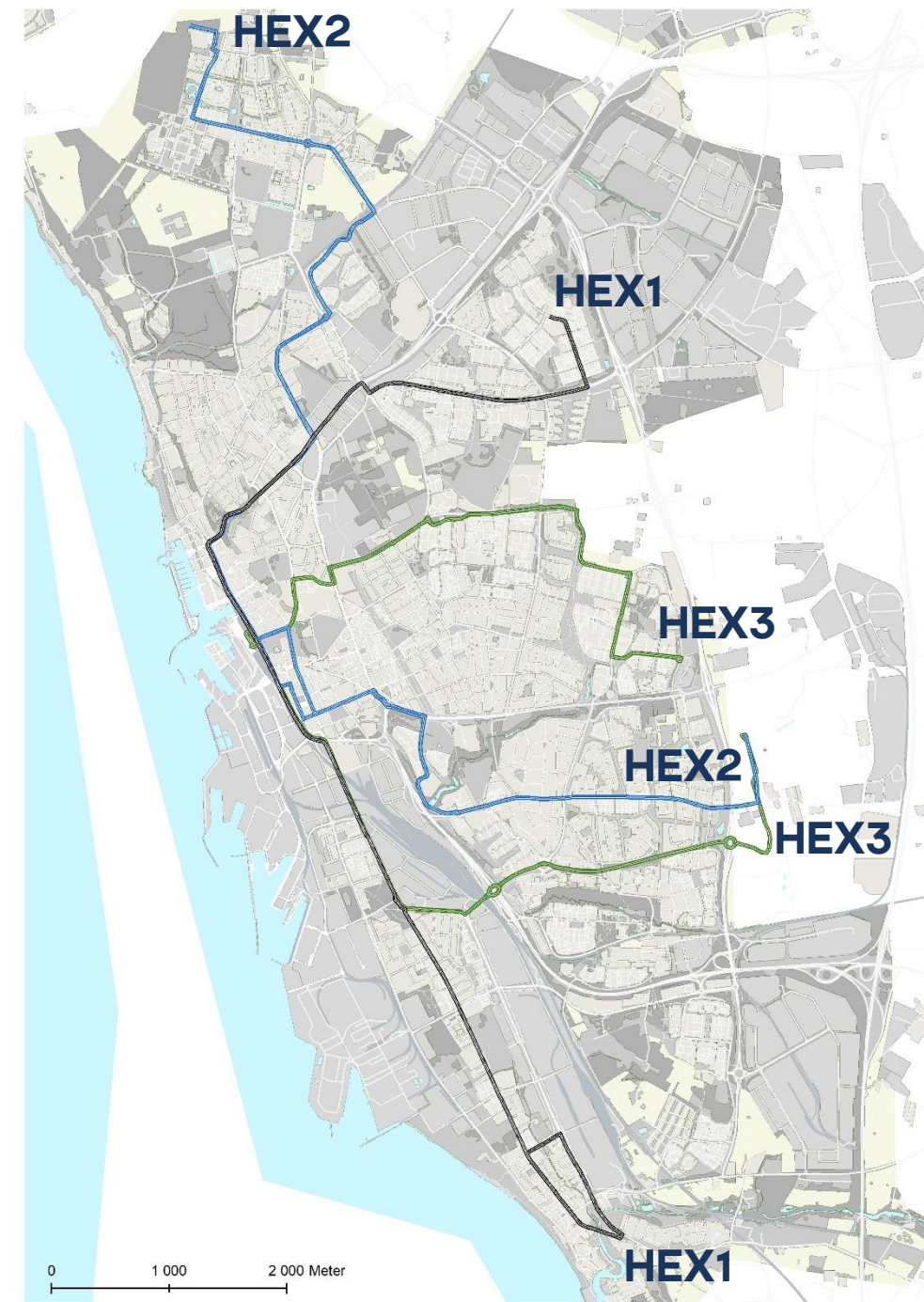
**Public transport network**

# BRT system in Helsingborg

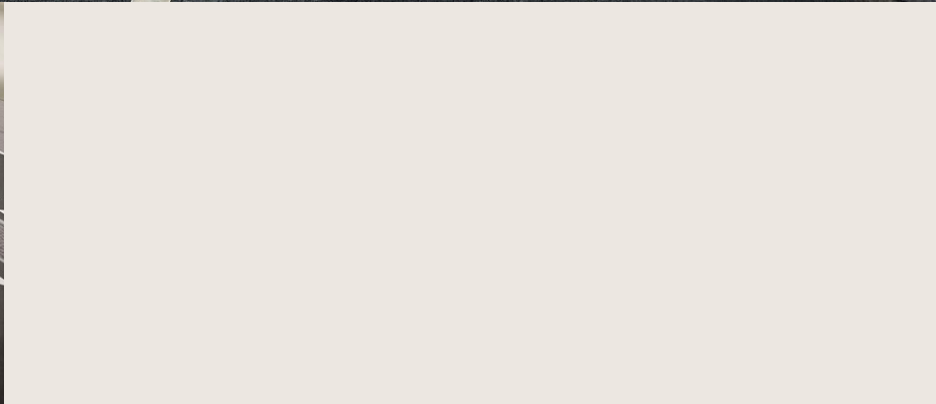
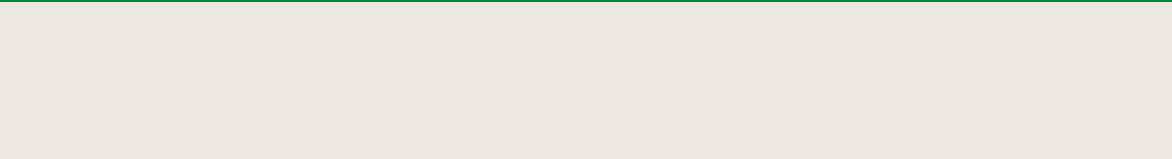
From 2019 to 2029

Link different parts to and through the city centre

And engine for city development, but also the other way around







# BRT as an engine for city development: Drottninghög



# City development as a guide for establishing BRT: new hospital

Opening in about 8 to 10 years

Establishing accessibility

Important challenge upkeeping a sustainable modal split

