

**City of Alexandria Park and Recreation Needs Assessment (2011)
Results in Census Tracts entirely encompassed within Beauregard Small Area Plan
(2001.03, 2001.02, 2001.04, 2001.05)**

Highest Needs (61% or above in one or more of the four census tracts)

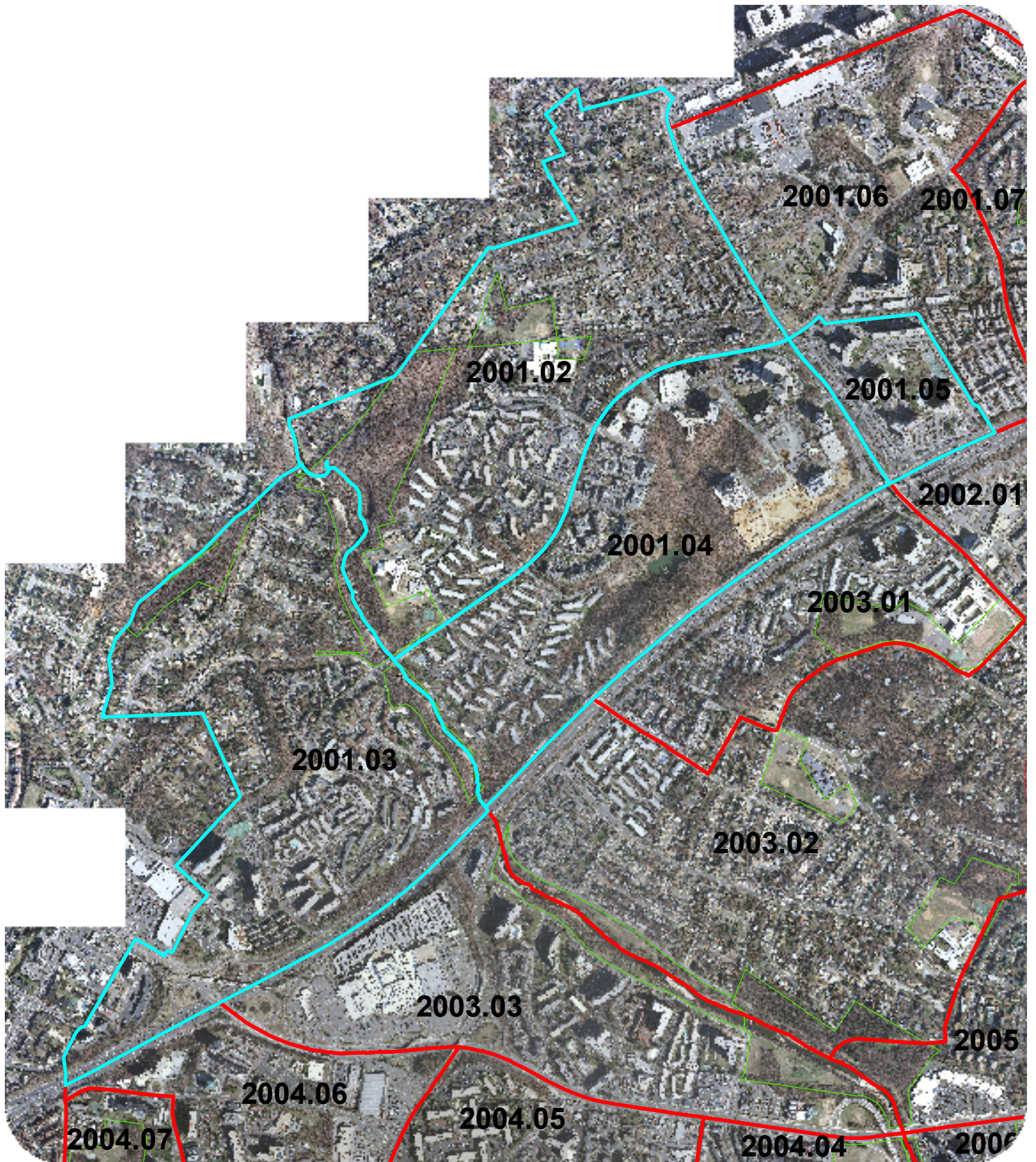
- Walking Trails (three out of four census tracts, with two showing (91-100%))
- Farmer's Markets (four out of four census tracts)
- Natural Areas (two out of four census tracts)
- Picnic Shelters/Areas (two out of four census tracts)
- Biking Trails (two out of four census tracts)
- Outdoor Swimming Pools (one out of four census tracts)
- Indoor Swimming Pools (one out of four census tracts)
- Indoor Exercise and Fitness Facilities (one out of four census tracts)

Second Tier Needs (41-60% in two or more of the three census tracts)

- Playgrounds (four out of four census tracts)
- Indoor Space for Small Events (three out of four census tracts)
- Running/Walking Track (three out of four census tracts)
- Outdoor Basketball Courts (three out of four census tracts)
- Outdoor Tennis Courts (three out of four census tracts)
- Fenced Dog Areas (two out of four census tracts)
- Fishing Areas (two out of four census tracts)
- Indoor Performance/Art Facilities (two out of four census tracts)
- Preschool Programs (two out of four census tracts)
- Before and After School Programs (two out of four census tracts)

Unmet Needs

- Census tracts 2001.03, 2001.02, and 2001.04 have greater met open space and park needs than other areas of the City. The programs with the highest unmet need are **fenced dog areas** (only 25% met in two of the four census tracts), and **indoor space for small events** (only 25% met in two of the four census tracts). Spray parks and outdoor public art also show a high unmet need.
- Needs that are only met 50% in all four census tracts include: indoor swimming pools, outdoor fitness stations, community gardens, unfenced dog areas, and spray parks.



Census Tracts in Beauregard Area

Park Needs Assessment (2011)
Results in Beaugard Area

		2001.03	2001.02	2001.04	2001.05
Walking Trails	need	41%-60%	91%-100%	91%-100%	61-80%
	unmet need	75% met	75% met	75% met	75% met
Natural Areas	need	41-60%	61-80%	61-80%	41-60%
	unmet need	100% met	75% met	75% met	50% met
Picnic shelters/areas	need	41-60%	61-80%	61-80%	41-60%
	unmet need	75% met	75% met	75% met	75% met
Biking trails	need	41-60%	61-80%	61-80%	21-40%
	unmet need	75% met	75% met	75% met	75% met
Farmer's Markets	need	61-80%	61-80%	61-80%	61-80%
	unmet need	75% met	50% met	50% met	50% met
Outdoor Swimming Pools	need	61-80%	41-60%	41-60%	41-60%
	unmet need	75% met	50% met	50% met	50% met
Indoor Swimming Pool	need	61-80%	41-60%	41-60%	21-40%
	unmet need	50% met	50% met	50% met	75% met
Indoor Exercise and Fitness Facilities	need	61-80%	41-60%	41-60%	21-40%
	unmet need	50% met	50% met	50% met	75% met
Fenced Dog Area	need	21-40%	41-60%	41-60%	1-20%
	unmet need	50% met	25% met	25% met	75% met
Indoor Space for Small Events	need	41-60%	41-60%	41-60%	21-40%
	unmet need	25% met	50% met	50% met	25% met
Running/Walking Track	need	41-60%	41-60%	41-60%	21-40%
	unmet need	75% met	50% met	50% met	75% met
Outdoor Fitness Stations	need	41-60%	21-40%	21-40%	1-20%
	unmet need	50% met	50% met	50% met	100% met
Community Gardens	need	41%-60%	21-40%	21-40%	21-40%
	unmet need	50% met	50% met	50% met	50% met
Playgrounds	need	41-60%	41-60%	41-60%	41-60%
	unmet need	75% met	100% met	100% met	100% met
Fishing Areas	need	21-40%	41-60%	41-60%	21-40%
	unmet need	75% met	50% met	50% met	50% met
Marina/Waterfront	need	21-40%	21-40%	21-40%	21-40%
	unmet need	50% met	75% met	75% met	75% met
Unfenced Dog Area	need	21-40%	1-20%	1-20%	Under 1%
	unmet need	50% met	50% met	50% met	N/A
Spray Parks	need	21-40%	21-40%	21-40%	1-20%
	unmet need	50% met	50% met	50% met	25% met
Indoor Performance/Art Facilities	need	21-40%	41-60%	41-60%	21-40%
	unmet need	50% met	75% met	75% met	50% met
Preschool Programs	need	21-40%	41-60%	41-60%	1-20%
	unmet need	50% met	50% met	50% met	100% met
Before and After School Programs	need	21-40%	41-60%	41-60%	1-20%
	unmet need	100% met	50% met	50% met	75% met

Park Needs Assessment (2011)

Results in Beaugard Area

Outdoor Basketball Courts	need	21-40%	41-60%	41-60%	41-60%
	unmet need	75% met	75% met	75% met	50% met
Soccer/Lacrosse Fields	need	21-40%	21-40%	21-40%	21-40%
	unmet need	75% met	50% met	50% met	75% met
Field Hockey/Rugby Fields	need	1-20%	1-20%	1-20%	1-20%
	unmet need	75% met	50% met	50% met	100% met
Outdoor Volleyball Courts	need	21-40%	21-40%	21-40%	21-40%
	unmet need	75% met	50% met	50% met	75% met
Football Fields	need	21-40%	21-40%	21-40%	21-40%
	unmet need	75% met	50% met	50% met	100% met
Outdoor Tennis Courts	need	21-40%	41-60%	41-60%	41-60%
	unmet need	100% met	100% met	100% met	75% met
Ballfields with 90 foot bases	need	1-20%	21-40%	21-40%	1-20%
	unmet need	75% met	75% met	75% met	100% met
Ballfields with 60 foot bases	need	1-20%	21-40%	21-40%	1-20%
	unmet need	75% met	75% met	75% met	75% met
Skateboard Parks	need	21-40%	21-40%	21-40%	1-20%
	unmet need	75% met	75% met	75% met	75% met
Outdoor Performance Space	need	21-40%	21-40%	21-40%	21-40%
	unmet need	50% met	75% met	75% met	50% met
Outdoor Special Event Rental Space	need	21-40%	21-40%	21-40%	21-40%
	unmet need	50% met	75% met	75% met	100% met
Racquetball/Squash Courts	need	1-20%	1-20%	1-20%	1-20%
	unmet need	75% met	50% met	50% met	25% met
Facilities for People with Disabilities	need	21-40%	21-40%	21-40%	1-20%
	unmet need	50% met	75% met	75% met	50% met
School Break Programs	need	21-40%	21-40%	21-40%	1-20%
	unmet need	75% met	50% met	50% met	75% met
Outdoor Public Art	need	21-40%	21-40%	21-40%	1-20%
	unmet need	50% met	75% met	75% met	25% met