



# Potomac Yard Metrorail Station

## Draft Environmental Impact Statement (EIS) Information

[alexandriava.gov/PotomacYard](http://alexandriava.gov/PotomacYard) & [potomacyardmetro.com](http://potomacyardmetro.com)

### Which alternatives are being considered?

Four alternatives are being considered. The “No Build Alternative” would include the existing transportation network plus all transportation projects expected to be in place by 2040. Each of the three “Build Alternatives” would include the No Build transportation network as well as the construction of a Metrorail station in Potomac Yard.

Many years of community planning have produced a vision for Potomac Yard, and a new Metrorail station along the Yellow and Blue lines is central to that vision. The City of Alexandria is undertaking an Environmental Impact Statement (EIS) for the station, which evaluates the environmental impacts of several potential station locations and provides information to decision-makers regarding the costs and benefits of each of the alternatives.

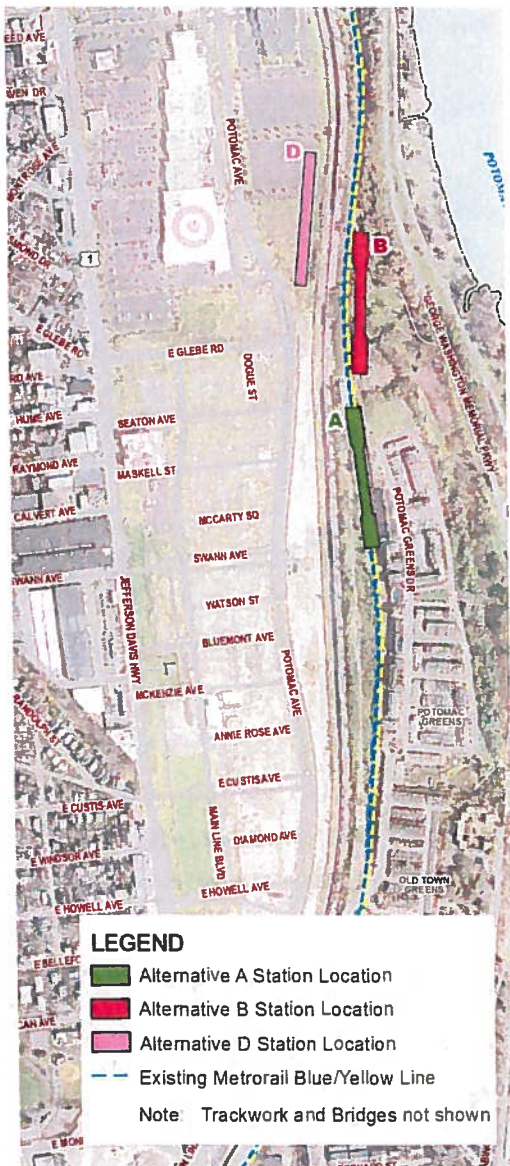
### Why a Metrorail Station at Potomac Yard?

Building a new Metrorail station is central to the vision for the redevelopment of Potomac Yard as a walkable mixed-use community, with access to high-quality retail, entertainment, and parks. A new Metrorail station would help to accommodate the growing transportation demand in the Route 1 corridor.

### What are the Benefits of a Metrorail Station at Potomac Yard?

A new Metrorail station in Potomac Yard would provide Metrorail access for thousands of Alexandria residents, employees, and visitors. It would support the creation of a community which provides housing, offices, shopping, and entertainment in a place where trips can be made via transit, foot, bicycle, or car. A Metrorail station in Potomac Yard would provide benefits to the community and the region by:

- Maximizing the number of people taking transit to and from the Potomac Yard area by providing direct access to Metrorail.
- Removing thousands of cars from the U.S. Route 1 corridor every day.
- Enabling a mix of uses in an environment where people would walk or bike to destinations in Potomac Yard for their daily needs.
- Providing more housing options near transit, including affordable housing, which enables people at a range of income levels to live in Alexandria and contribute to the City.
- Providing a vibrant destination for all Alexandrians with a mix of uses, including significant shopping and public parks.
- Strengthening and diversifying the tax base to improve the long-term economic stability of the City.



Send comments to:  
[comments@potomacyardmetro.com](mailto:comments@potomacyardmetro.com)

## What's Next?

- **Public Information Sessions:**

In Fall 2013, the Draft EIS will be available for review. During this period, the Potomac Yard Metrorail Implementation Group (PYMIG) will be hosting a series of information sessions, where individuals can learn more about the EIS process and get more information about specific subject areas.

- **Comment on the Draft EIS:**

During the circulation period for the Draft EIS, the public may submit written comments via mail or the project website.

- **Project Public Hearing:**

A project public hearing will be held during the circulation period for the draft EIS where individuals may offer oral and written comments.

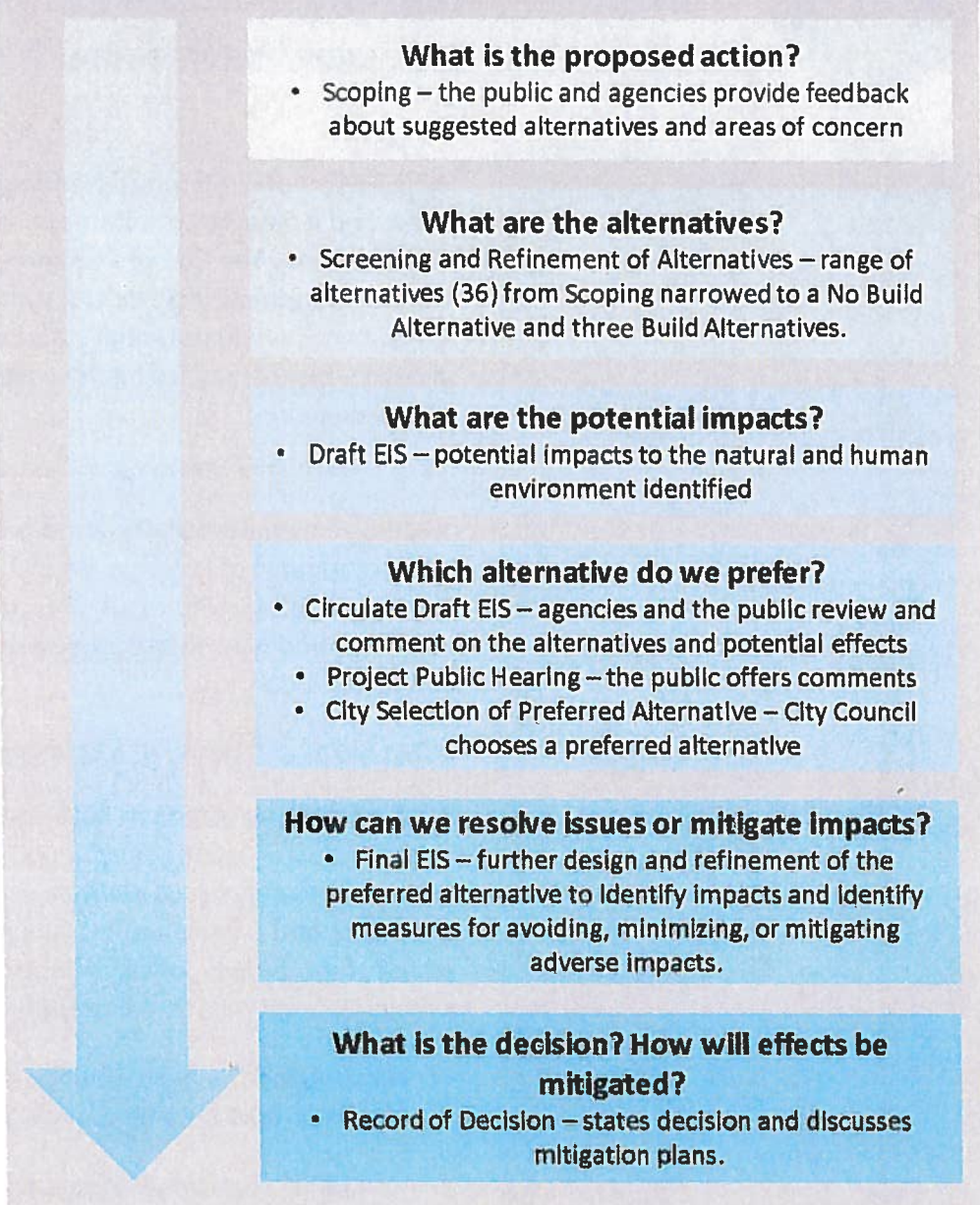
- **City Selection of Preferred Alternative:**

The City Council will choose a preferred alternative following the public comment period, project public hearing, and City Council public hearing.

- **Future City Process:**

If a Build Alternative is selected, there will be a future City process to further refine design details. This process will involve the community and will require future City Council action before construction can begin.

## The Environmental Impact Statement (EIS) Process



### What is my role in the EIS process?

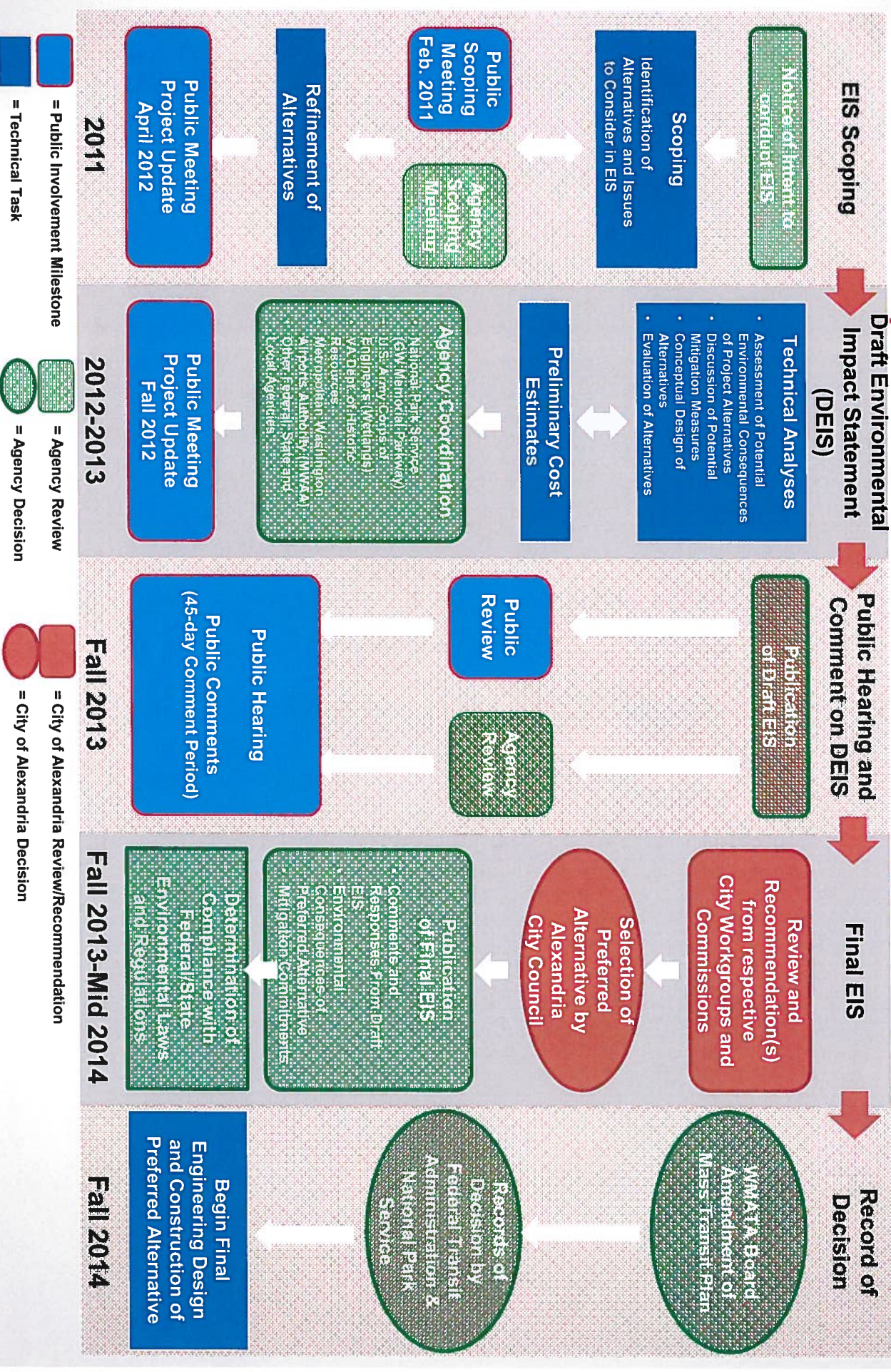
Throughout the EIS process, public feedback helped to shape the alternatives analyzed as part of the Draft EIS, and highlighted resource areas of particular concern to the community.

During the review period for the Draft EIS, the public will have the opportunity to read and comment on the results of the environmental analysis. Comments received during this period can help to identify changes to alternatives that may mitigate adverse effects. These changes may be incorporated into the Final EIS.

For more information, please visit:  
[alexandriava.gov/PotomacYard](http://alexandriava.gov/PotomacYard) & [potomacyardmetro.com](http://potomacyardmetro.com)  
Send comments to: [comments@potomacyardmetro.com](mailto:comments@potomacyardmetro.com)



# Potomac Yard Metrorail EIS Public Input and Decision Making Flowchart



= Public Involvement Milestone  
 = Agency Review  
 = Agency Decision  
 = Technical Task

= City of Alexandria Review/Recommendation  
 = City of Alexandria Decision