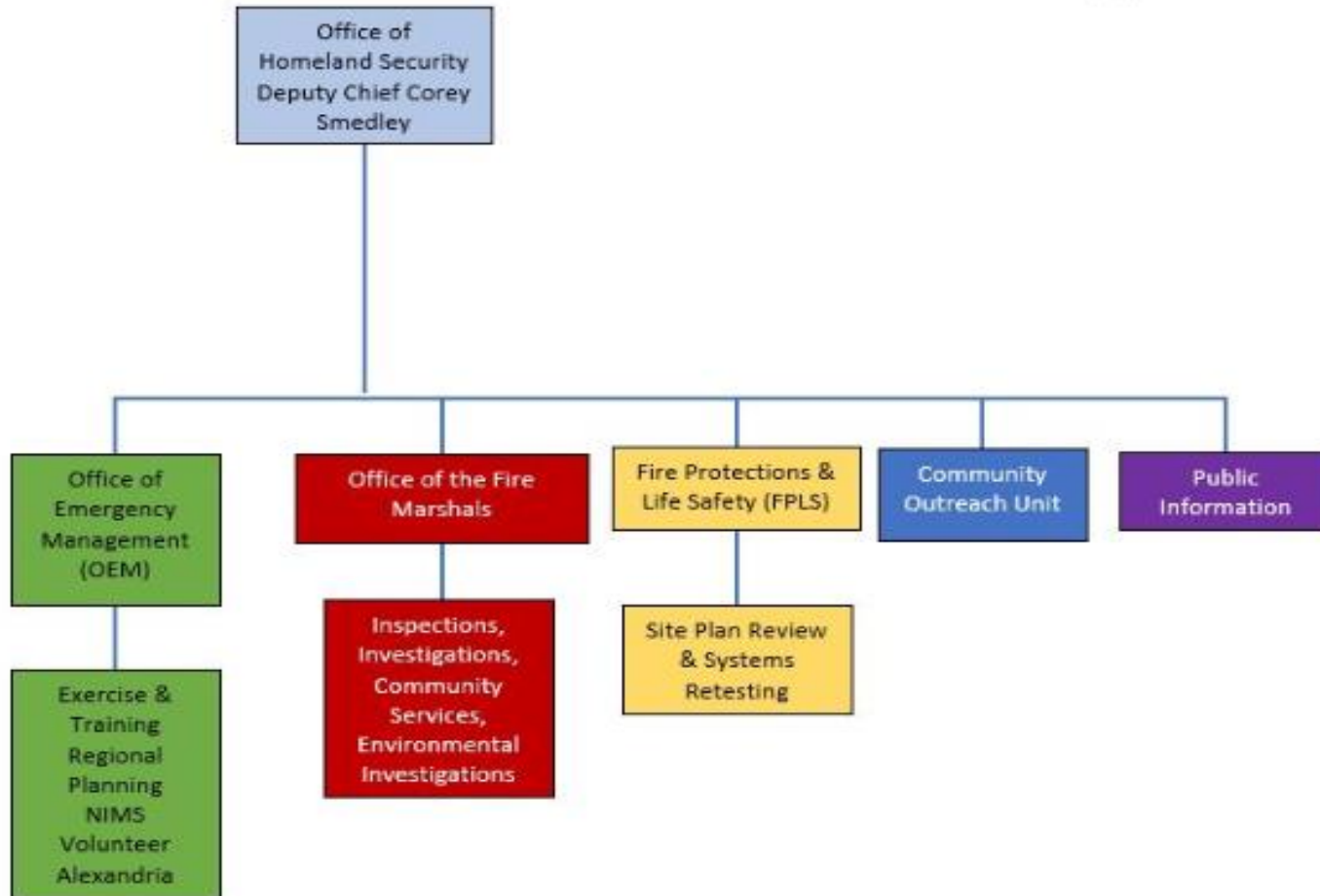




Threats and Hazards Identification and Risk Assessment (THIRA)/Family Assistance Center

Teresa Scott Hoggard, CEM

Organizational Chart



Definition of Disasters

Sudden event that seriously disrupts the functioning of a community or society and causes human, material, economic or environmental losses.

- Natural
- Human & Technological

THIRA

- What threats and hazards can affect a locality?
- If they occur, what impacts would those threats and hazards have on the locality?
- Based on those impacts, what capabilities should the locality have?

City of Alexandria 2018 THIRA

- Scenarios
 - Pandemic
 - Severe weather
 - Train derailment
 - Active violence



THIRA Gap Identified

The City of Alexandria is working toward our Family Assistance Center (FAC) Plan.

- Planning efforts have been started between OEM and the Health Department

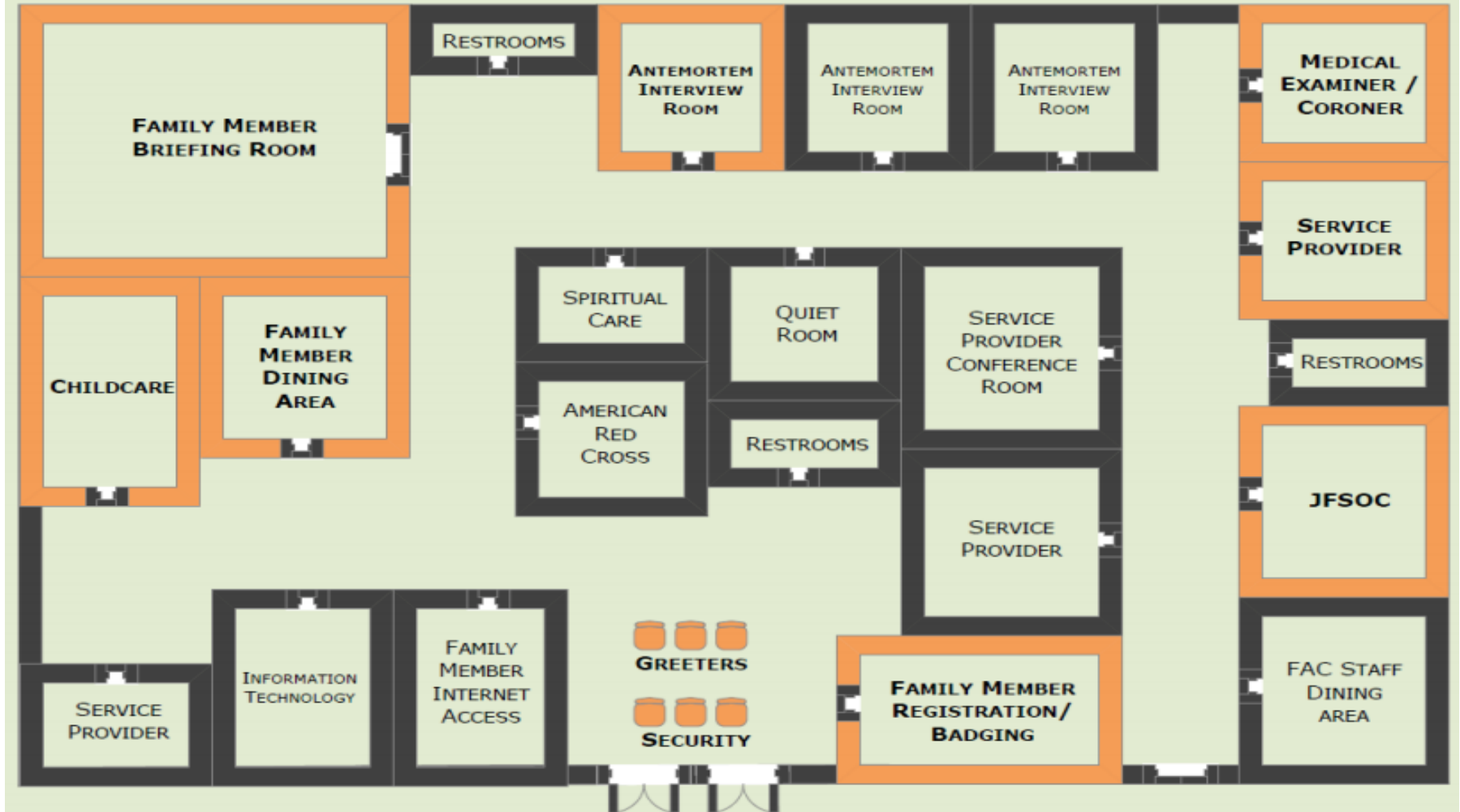
Family Assistance Center (FAC)

A facility that is established as the result of a mass casualty/fatality incident with a significant number of victims.

- Safe, secure facility
- Reunification of family members
- Report missing persons
- Death notifications
- Visitation to disaster site
- Provide information to family members
- Provide other services based on needs

FAC Layout

POSSIBLE FAMILY ASSISTANCE CENTER (FAC) LAYOUT*



Group Activity 1

What services does your organization have to support a FAC?

Are there any other services that you believe are needed for a FAC?