



**DEPARTMENT OF GENERAL SERVICES  
421 King Street, Suite 220  
Alexandria, Virginia. 22314  
alexandriava.gov**

September 9, 2019

Re: Fire Station 203 Sewer Work Road Closures on Monticello Boulevard

Dear Sir or Madame:

On behalf of the City of Alexandria, I would like to notify you of some upcoming Sewer Line work that might temporarily affect your travels due to necessary partial road closures. Attached is a street map which shows the limits of the road closures and sewer work on Monticello Boulevard.

In the coming weeks, a temporary sewer line connection will be made near the intersection of Pierpont and Monticello Blvd. To perform this work, one lane of traffic along Monticello will be closed to allow excavation and pipe installation. The new sewer line installation is scheduled for approximately two weeks; however, it will not have any effect on your existing sewer service.

Be advised, Monticello Avenue will remain open before and after workhours and on weekends and the traffic will be controlled by Dustin Construction during work hours. Steel plates will be installed over the construction area to provide a safe environment, in addition, neighbors in the immediate vicinity will have access to their property during this installation.

The Sewer line tentatively begins October 7, 2019.

Please forward your questions and inquiries to:

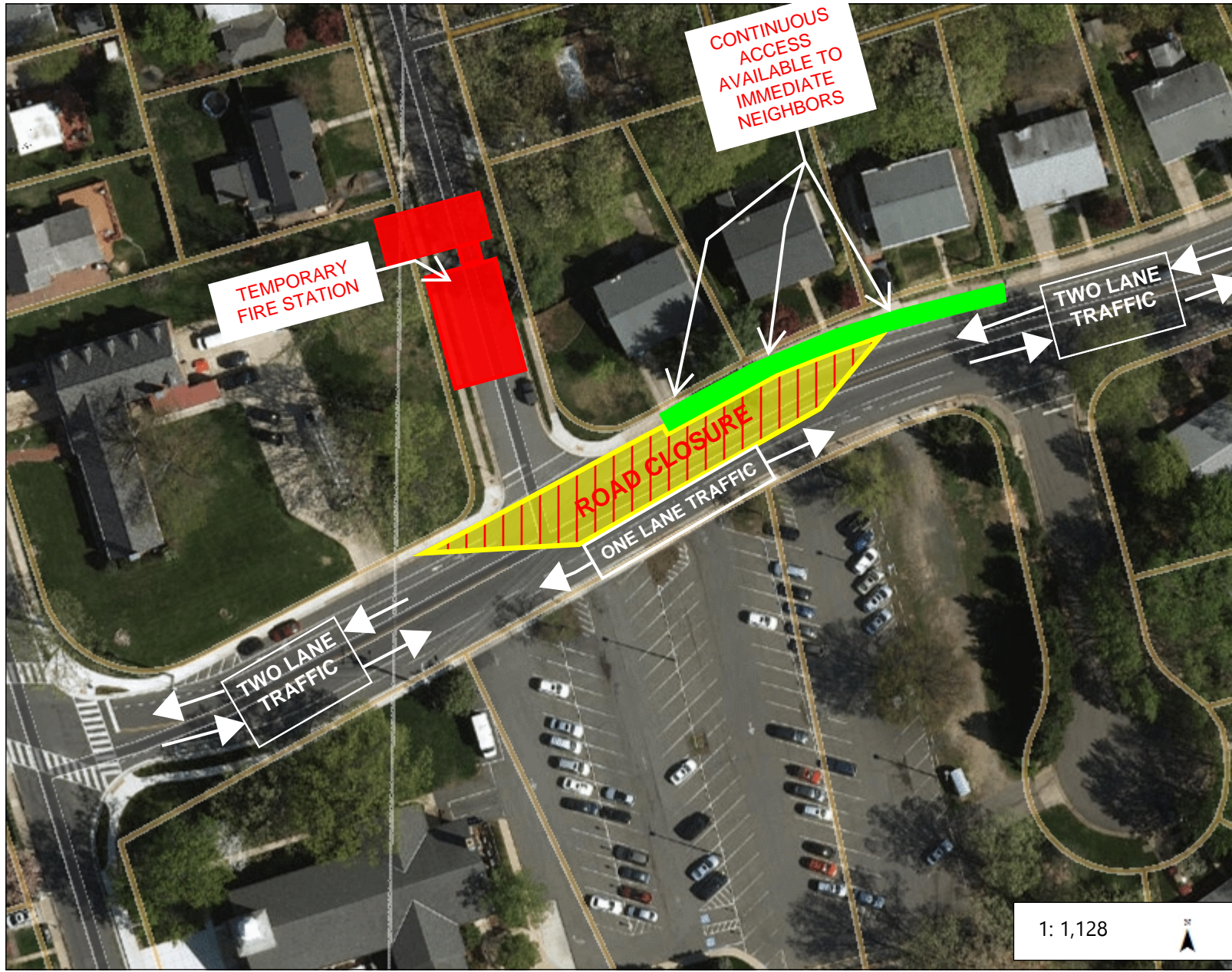
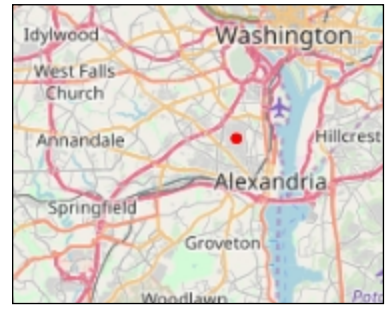
City of Alexandria,

Department of General Services.

Project Manager: Adrian King AIA, NCARB

Phone Number: 571.215.5345/ Email: [adrian.king@alexandriava.gov](mailto:adrian.king@alexandriava.gov)

Attachment.



Legend

- Tax Map Index
- Parcels
- Blocks
- Fire Stations
- Addresses
- Metro Stations
  
- City Boundary
- Rail Lines
- Parcels
- Buildings
- Surface Water
- Streams
- Parks
- City of Alexandria

1: 1,128



WGS\_1984\_Web\_Mercator\_Auxiliary\_Sphere  
City of Alexandria, VA

This map is a user generated static output from an Internet mapping site and is for reference only. Data layers that appear on this map may or may not be accurate, current, or otherwise reliable.

THIS MAP IS NOT TO BE USED FOR NAVIGATION

Notes