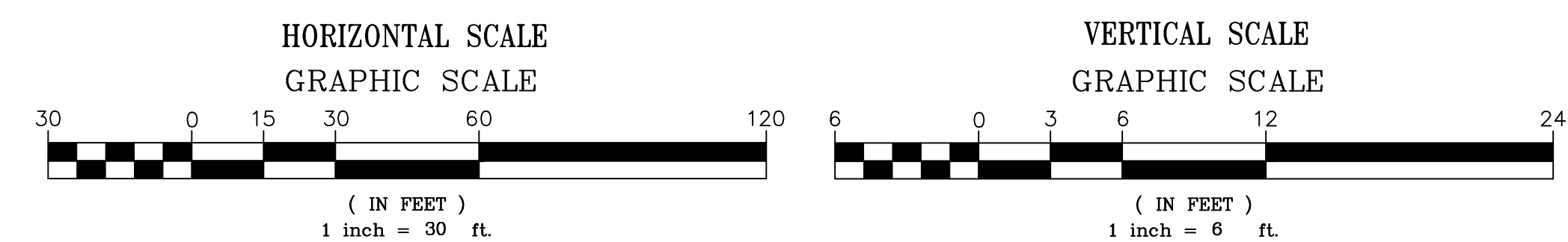
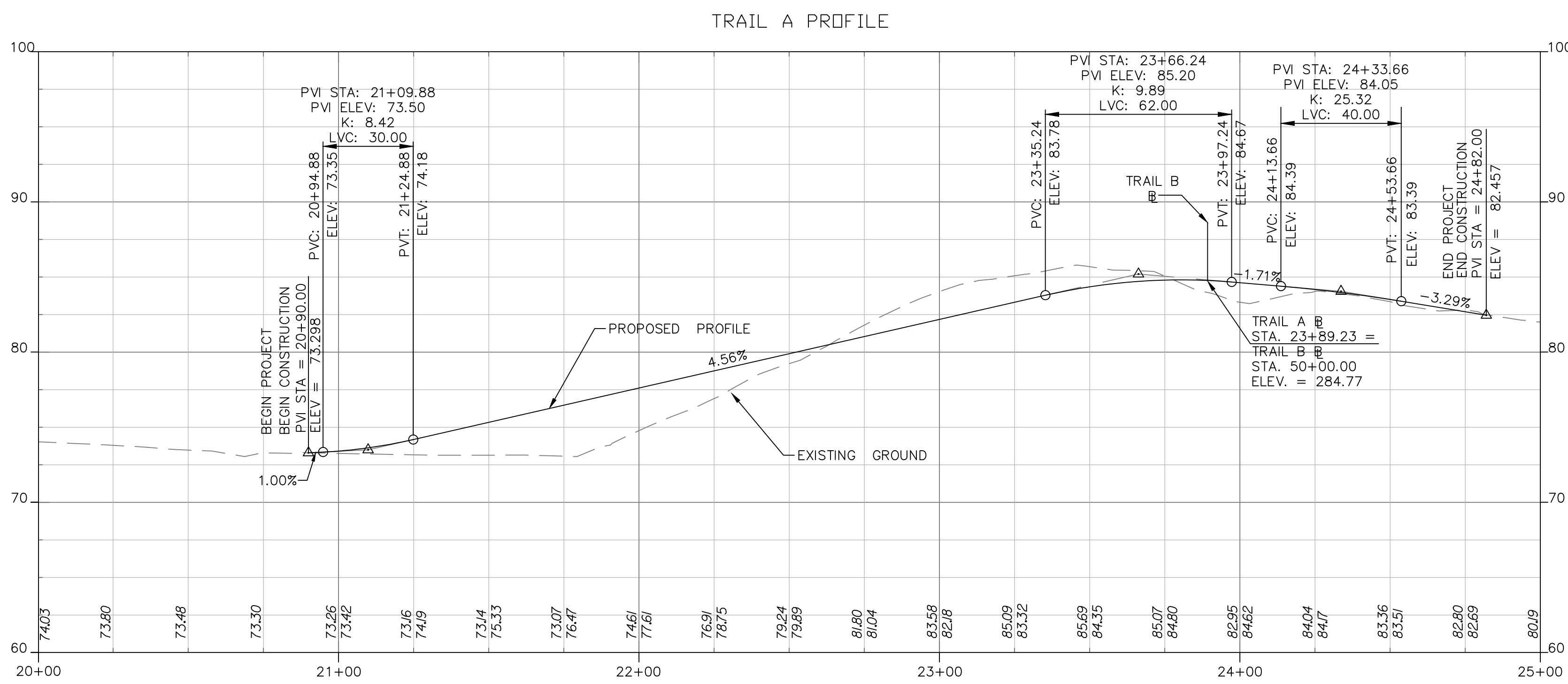


- NOTES:**
1. THE EXISTING STORM DRAIN PIPE IS SHOWN BASED ON GIS DATA. FIELD SURVEY WILL BE ATTAINED TO MORE ACCURATELY LOCATE THE STORM DRAIN TO BE ACCOMMODATED INTO THE DESIGN FOR THE NEXT SUBMISSION.
 2. SEE VAN DORN STREET REPAIR DETAILS 1 & 2 ON SHEETS 29M & 29N.



Transportation & Environmental Services
 Engineering & Design Division
 P.O. Box 178 Alexandria, Va. 22313

