



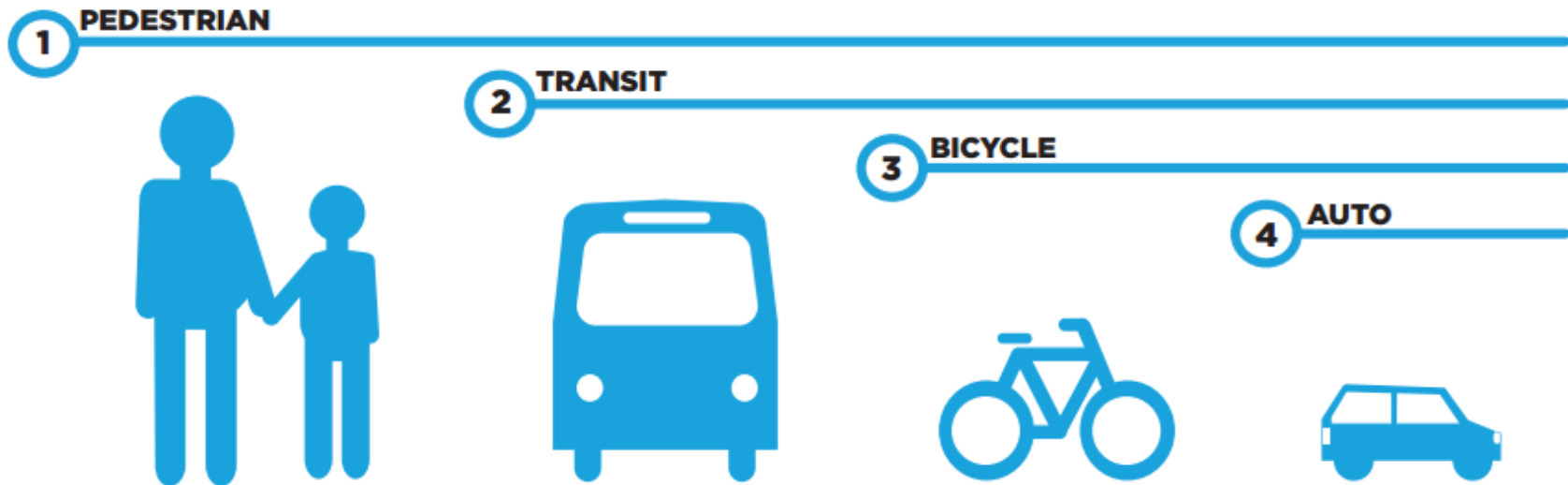
Taylor Run Parkway at Janneys Lane – Intersection Improvements

**College-Clover Park Civic
Association**

July 10, 2014

Complete Streets

"Streets that are designed to consider the safety and convenience of all users of the transportation system including pedestrians, bicyclists, transit users, freight, and motor vehicle drivers and ensure that the needs of all users shall be accommodated and balanced so that even the most vulnerable – children, elderly, and persons with disabilities – can travel safely within the public right-of way."





Complete Streets

- **City Council Goal #3:** A multimodal transportation network that supports sustainable land use and provides internal mobility and regional connectivity for Alexandrians
- **Complete Streets Policy:** Alexandria shall incorporate Complete Streets infrastructure into existing public streets to improve the safety and convenience of users and construct and enhance the transportation network for all users
- **Transportation Master Plan:** Implement a citywide bikeway network to serve all users and trip types, provide end-of-trip facilities, improve bicycle/transit integration, implement encouragement programs and improve safety
- **Pedestrian and Bicycle Mobility Plan**



Civic Engagement

- April 2013 – College-Clover Park Civic Association meeting to solicit feedback on intersections
- June 2013 – Taylor Run Citizens' Association meeting to gain input on intersections
- Summer 2014 – Concept design presentation to community



Ongoing Sewer Project

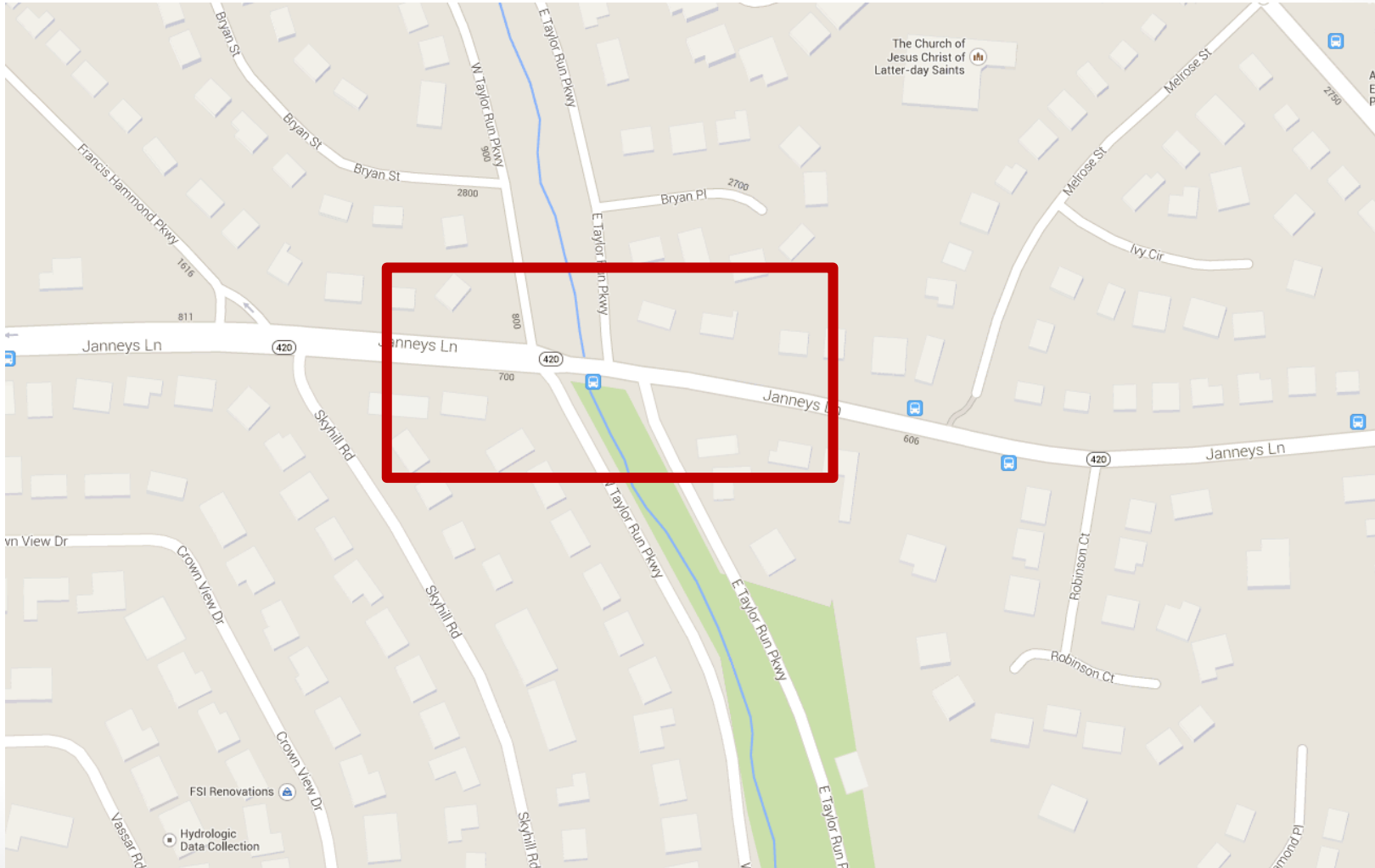
- Provides for sanitary sewer realignment to eliminate the existing siphon in the sewer system
- Installs headwalls on existing culverts
- Includes stream restoration work in the upstream and downstream of the culverts
- Projected completion: November 2014



Project Scope

- Replace asphalt bump outs on Janneys Lane with permanent sidewalk extensions
- Improve pedestrian safety
- Upgrade markings with resurfacing

Project Limits





Data Collection

- Pedestrian Crossing Peak Hour
 - 7:30am – 8:30 am: 62 pedestrians crossing Janneys Lane
- 85th Percentile Speeds
 - EB: 33.9mph
 - WB: 33.4mph
- Percent heavy vehicles
 - EB: 13.8%
 - WB: 13.0%
- Crashes: 2004-2014
 - 10 vehicle crashes at intersection
 - 0 pedestrian or bicycle crashes
- Traffic Volumes

Roadway	Direction	AM Peak	PM Peak
Janneys Lane	EB	600 vph	425 vph
Janneys Lane	WB	350 vph	420 vph
W Taylor Run	NB	165 vph	250 vph
W Taylor Run	SB	250vph	320 vph



Community Comments

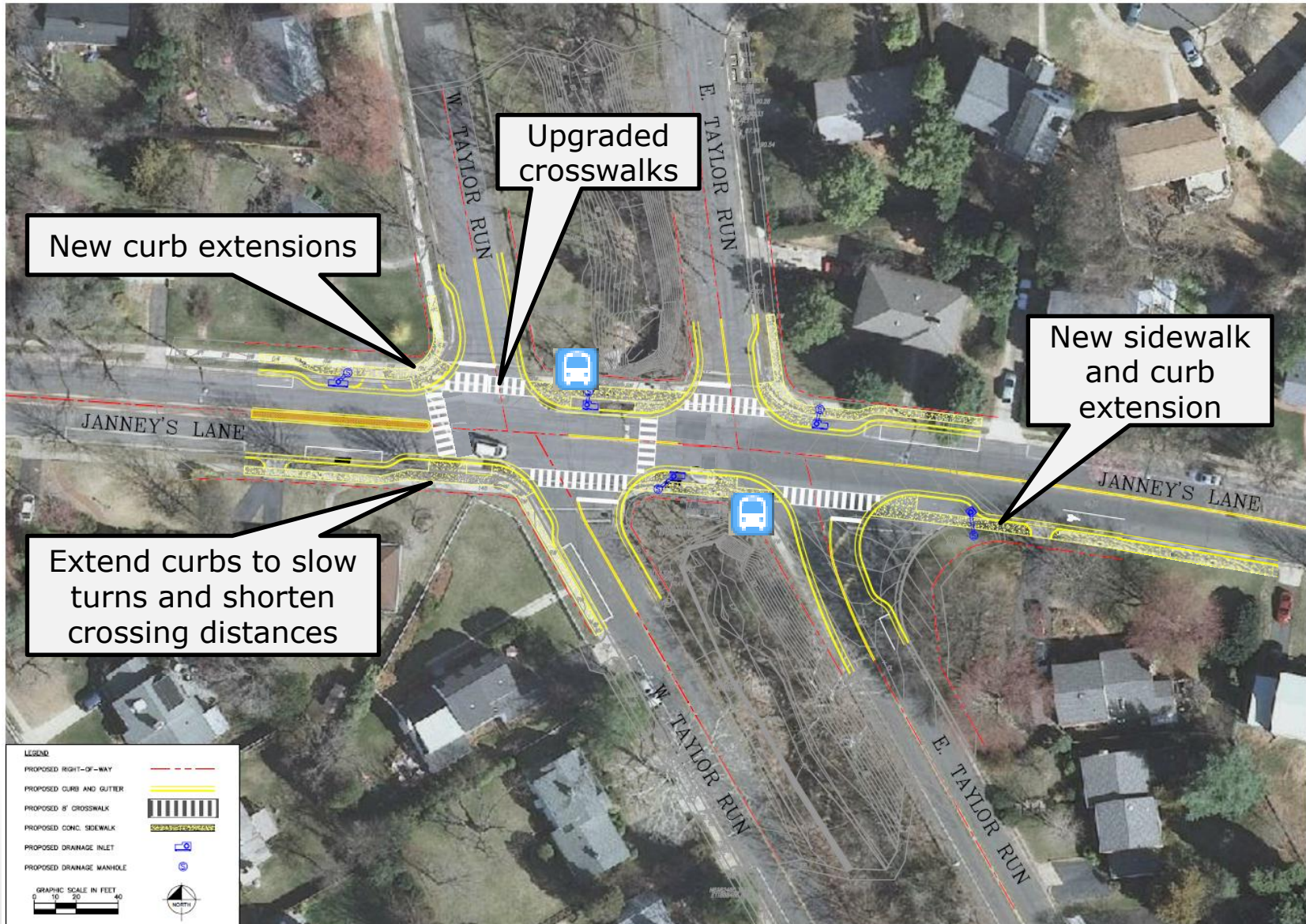
- Visibility and lighting
- Speeding
- Unsafe crossings
- Asphalt bump outs are eyesores
- Vehicles turn to quickly
- Issues with buses and bus stops
- Crashes
- Missing sidewalk

Proposed Improvements

- Replace asphalt bump outs with concrete curb extensions
- Shorter crossing distances
- Better visibility at bus stops
- New sidewalk
- New curb ramps
- Narrowed travel lanes



Concept Design



Considerations

- Accessibility
- Safety
- Parking
- Accommodating pedestrians, transit, bicyclists, and motorists
- Roadway width
- Cost
- Right of way constraints





COMMENTS	RESPONSE
High speeds on Janneys Lane	Narrowing roadway to reduce speeds and calm turning vehicles
Unsafe crossings/vehicles do not yield to pedestrian/children crossing	Upgrading crosswalks to high visibility and shortening crossing distances
Asphalt bump outs are eyesores and do not help slow traffic	Replacing bump outs with extended concrete curbs
Vehicles turn onto southbound East and West Taylor Run Parkway too quickly and do not pay attention to crosswalks	Extending curbs to reduce turning radius and slow vehicles
Vehicles unsafely pass stopped buses	Vehicles will not have room to pass stopped buses
Crashes at southwest crossing of Janneys and West Taylor Run Parkway (into the fence and parked vehicles)	Extending curbs to reduce turning radius and slow vehicles
Poor visibility from side streets when buses are stopped (mainly from northbound East Taylor Run Parkway)	Curb extensions will allow for greater sight distance and better visibility
Missing sidewalks on the south side of Janneys Lane between E Taylor Run and Robinson Court.	Construct sidewalk where feasible on south side of Janneys Lane
Poor visibility and lighting for crosswalks (letter from College-Clover Park Civic Association)	Request to City – City evaluation – Petition signed by nearby residents in support of increased street lighting



Next Steps

- Compile comments – Summer 2014
- Final design – Summer/Fall 2014
- Implementation – Spring/Summer 2015



Thank you!

Questions and Comments

Project Website: <http://alexandriava.gov/77942>

Contact: Hillary.Poole@AlexandriaVA.gov