

Four Mile Run Restoration Project e-Newsletter

Volume 1, Issue 5

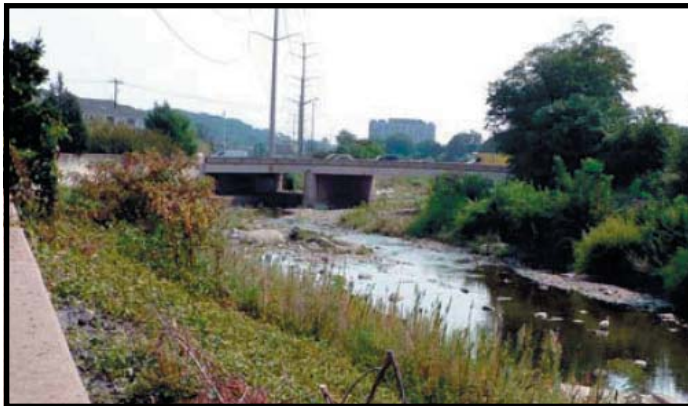
November/December 2008

Construction Underway for Four Mile Run Trail Extension

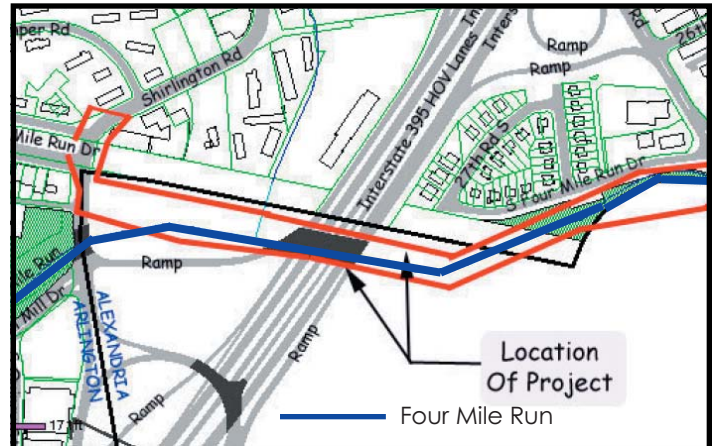
Welcome to the fifth edition of the Four Mile Run Restoration Project electronic newsletter. This bimonthly newsletter provides information on restoration project activities, meetings, and events. For additional information on the Four Mile Run Restoration Project, please visit the Northern Virginia Regional Commission's (NVRC) website at <http://www.novaregion.org/fourmilerun>.

In the past year, passersby on the north side of Four Mile Run have noticed significant changes to the near-stream landscape in the vicinity of Interstate 395. Construction of a 3,000-foot extension of the Four Mile Run Trail began in October 2007; the new section will link the existing Washington & Old Dominion (W&OD) and Four Mile Run Trails, which currently terminate on the west side of Shirlington Road and on the east side of West Glebe Road, respectively.

Pre-Construction - East of I-395



During Construction - East of I-395



Through its grade-separated underpasses at both Shirley Highway (I-395) and West Glebe Road, the planned route will eliminate nearly a mile of hazardous on-street travel and difficult road crossings for walkers, runners, and cyclists alike. Users of the W&OD trail will be afforded a safer connection to the Four Mile Run Trail and to communities including Crystal City, Pentagon City, Old Town Alexandria, Ballston, and even Washington, DC.

Additionally, the ongoing project includes the installation of over 1,600 feet of new 48-inch diameter sanitary sewer main that will provide needed capacity for the Four Mile Run interceptor sewer in this area. Arlington County contracted with Facchina Construction Company to complete all of the aforementioned work, which is expected to be finished in summer 2009.

Constructed Trail - West of I-395



Additional Information

If you have additional questions regarding the construction of the trail connector, contact Ritch Viola, Arlington County Department of Environmental Services, at rviola@arlingtonva.us. To subscribe or unsubscribe to this newsletter, email NVRC environmental planner Marshall Popkin, at mppopkin@novaregion.org.



US Army Corps
of Engineers®

