



Braddock Implementation Advisory Group Meeting #17

September 29, 2015

7:00pm

Charles Houston Recreation Center



Meeting Agenda

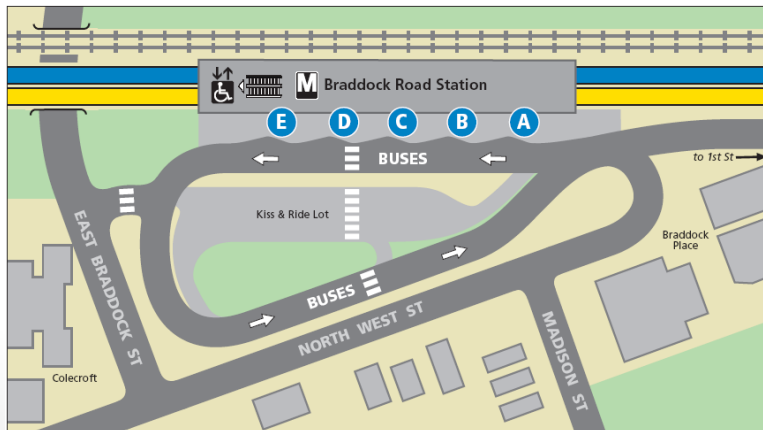
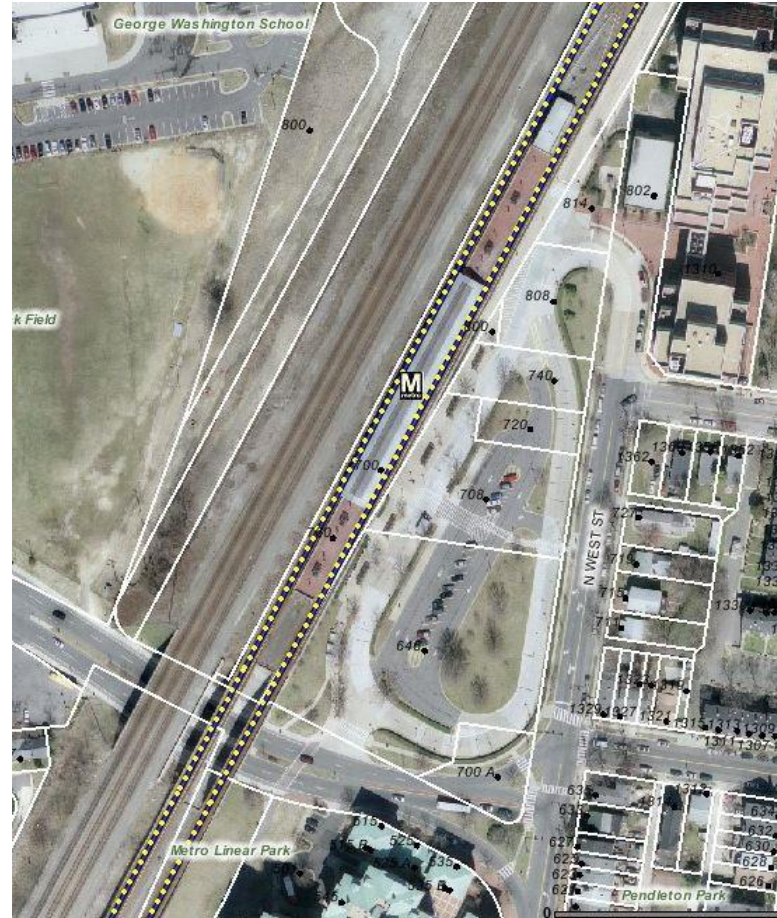
- Welcome and Introductions
- Follow-Up Items from Prior IAG Meeting
- 1-Acre Community Park Design Process
- Braddock Metro Station Update
- Other Business

Braddock Metro Station Aerial



9/29/15

Existing Conditions (April 2014)





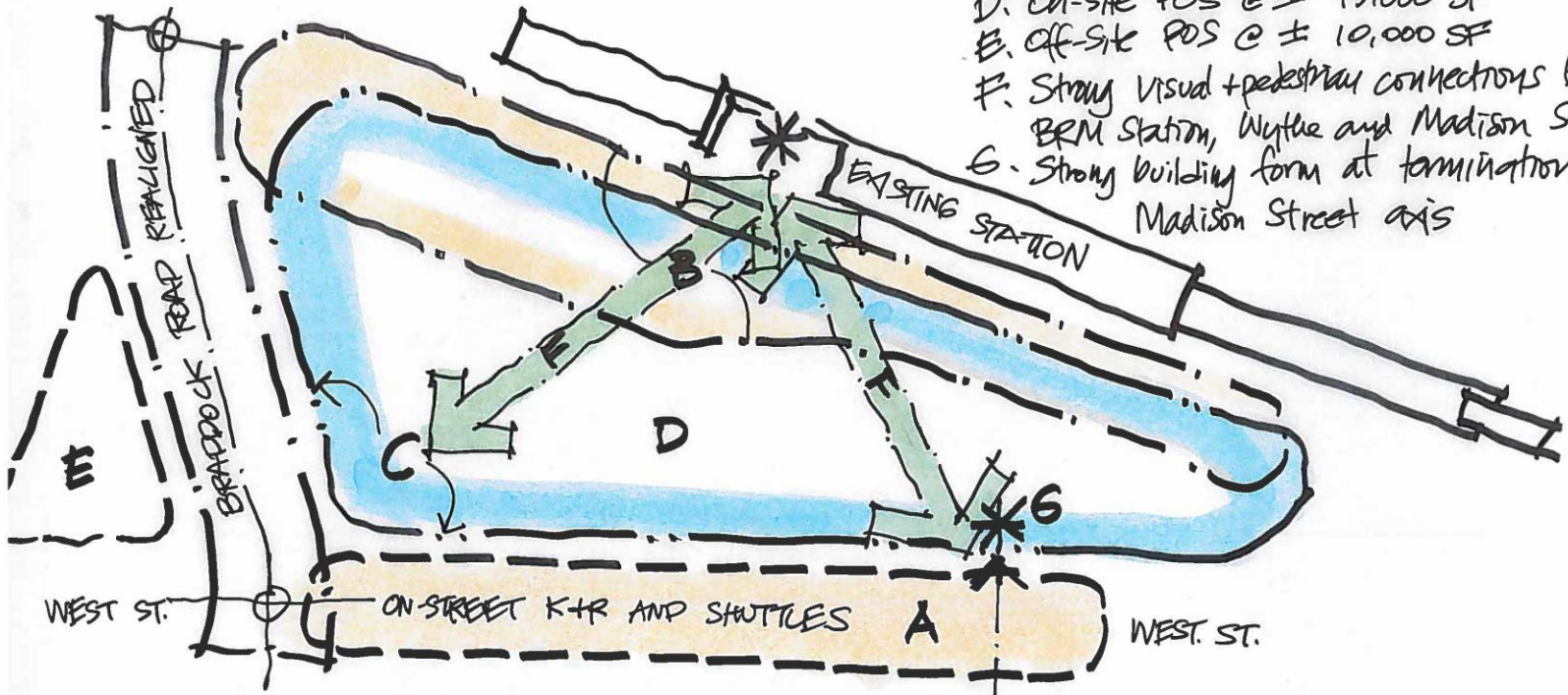
Current Development Parameters (April 2014)

- Zoning Classification: UT (Utilities and Transportation)
- Provide land in the City for utility and transportation purposes
- Parcel Area: 139,000sf/3.19 acres
- Allowable FAR: 0.25/0.50 (with SUP)
- Allowable Height: 35/50ft (with SUP)
- Existing Development: 0sf

Framework



- A. Kiss + Ride / Shuttles on-street (N. West. btw. W)
- B. Two-way Bus Facility
- C. Development Envelope - also over busway
- D. on-site POS @ ± 15,000 SF
- E. off-site POS @ ± 10,000 SF
- F. Strong visual + pedestrian connections between BRM Station, Wythe and Madison Streets
- G. Strong building form at termination of Madison Street axis



ON-STREET K+R AND SHUTTLES A WEST ST. WEST ST.

DEVELOPMENT GUIDELINES (PER SAP):
 • FAR: 3.0
 • UNDERGROUND PARKING
 • USE: OFFICE, RETAIL, (HOTEL?)

E.