

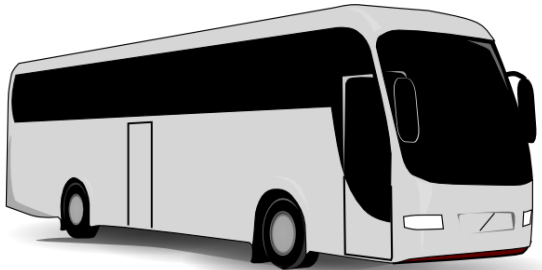


## City of Alexandria Motorcoach Operations

Welcome to Alexandria!

Please use this guide to learn:

- where to **park**
- where to **unload**
- City **tour bus policies**
- where to **shop/use facilities** near designated parking locations



### Motorcoach Loading and Unloading

Loading and unloading is allowed in designated areas throughout the historic district.

#### Waterfront & Torpedo Factory Arts Center

- Unit block of King Street (1 space), westbound, behind King Street Trolley. **Please do not load/unload on Cameron or Union streets.**

#### Market Square

- 300 block of King Street (5 spaces), westbound coaches between Fairfax and Royal streets. **Please do not load/unload on Fairfax Street or at the DASH public transit stops.**

#### Gadsby's Tavern & Museum

- 100 block of N. Royal Street (1 space) southbound between Cameron and King Streets, directly in front of Gadsby's Tavern Museum and Restaurant.

#### Christ Church

- 100 block of N. Washington Street (5 spaces) between Cameron and King streets, southbound **EXCEPT 4-6 pm Mon-Fri.**
- 100 block of S. Washington Street (1 space) between Prince and King Streets, northbound **EXCEPT 7-9 am Mon-Fri. Please do not block the DASH/MetroBus Stop.**

#### The Lyceum

- 200 block of S. Washington Street (1 space) between Prince and Duke Streets, southbound **EXCEPT 4-6 pm Mon-Fri.**

### Free Short Term Parking

Motorcoach parking is allowed in designated areas throughout the historic district.

#### Swann Avenue—No Reservation Required!

- 7 spaces on the eastbound side of the 400 block of Swann Avenue  
**NO RESERVATION NECESSARY; MARCH-JUNE ONLY:  
4pm-11pm Mon-Fri, 8am-11pm Sat, Sun, Holidays**

#### North Old Town

- 3 spaces on the southbound side of the 900 Block of N. St. Asaph Street  
**BY RESERVATION ONLY**

#### Robinson Terminal North

- 5 spaces at Robinson Terminal North, on the northbound side of the 500 Block of N. Union Street.  
**BY RESERVATION ONLY**

### Paid Overnight & Long-Term Parking

#### Masonic Memorial

- 25 spaces at 101 Callahan Drive
- 9am-11pm permits: \$15
- Overnight parking permits: \$40/24 hour period  
**BY RESERVATION ONLY**

Reserve and/or purchase a permit at  
[www.alexandriava.gov/motorcoach](http://www.alexandriava.gov/motorcoach)  
or contact the Alexandria Visitor Center at  
**703.746.3301**

## Amenities near Motorcoach Parking

### Swann Avenue

#### Restaurants in Del Ray (multiple blocks)

2200-2400 Mount Vernon Ave

15 minute walk from Swann Avenue Parking

#### Restaurants at Potomac Yard Shopping Center

3000-3700 Jefferson Davis Highway

15 minute walk from Swann Avenue Parking

### North Old Town

#### Restaurants on Montgomery, Washington & N. St. Asaph Streets (limited hours may apply)

5-10 minute walk from North Old Town Parking

#### Restaurants on King Street (multiple blocks)

10-20 minute walk from North Old Town Parking

### Restaurants in Old Town

N. Washington & King

15 minute walk from North Old Town Parking

### Robinson Terminal North

#### Restaurants on King Street (multiple blocks)

10 minute walk from Robinson Terminal Parking

### Masonic Memorial

#### Restaurants around Carlyle (multiple blocks)

in/around 450 John Carlyle Street

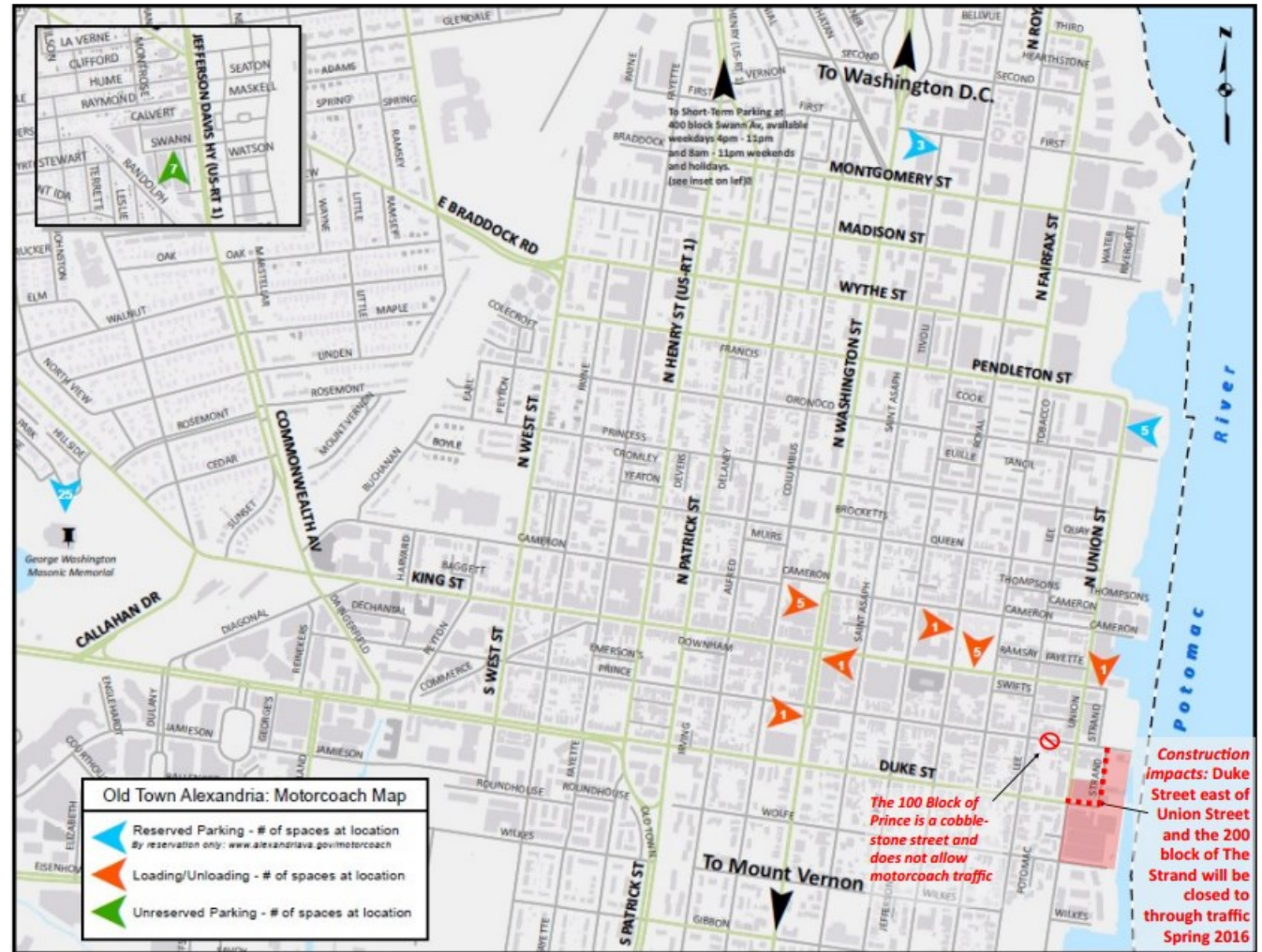
15 minute walk from Masonic Memorial Parking

#### Restaurants on King Street (multiple blocks)

5-30 minute walk from Masonic Memorial Parking

For a list of restaurants in Old Town, please visit:

<http://www.visitalexandriava.com/old-townalexandria/restaurants/>



### Please **do!**

- When possible, plan ahead and reserve a parking location in advance of your visit.
- **Contact 703.746.4020** if you have questions about the City's policies or facilities **(24 hours/day)**.
- **Enjoy your time in the City of Alexandria, and be sure to return!**

### Please **do not...**

- Idle for more than 15 minutes
- Stop for touring at non-designated locations
- Double park or load/unload in a travel lane
- Drive on cobblestone roads

Enforcement officials actively cite violations.  
Fine amounts vary based on the violation.