

## ACCEPTABLE MATERIALS



**Household Cleaners**  
Bleach, Ammonia, Drain Cleaner, Glass Cleaner, etc.



**Automotive Chemicals**  
Gasoline, Antifreeze, Motor Oil, Battery Acid & Car Batteries



**Electronic Waste**



**Paint, Stains & Solvents**  
Latex, Oil-Based & Spray Can Paint  
Flammable Caulks & Adhesives Lacquers, Varnishes & Thinners.



**Mercury Containing Items**  
Old Thermometers & Thermostats  
Fluorescent Bulbs



**Herbicides & Garden Chemicals**



**Small Pressurized Cylinders**  
Propane Tanks, Fire Extinguishers, Mapp Gas



**Pesticides**  
Rodent, Insect & Ant Repellent Products.



**Batteries**  
Rechargeable (Li-Ion, Ni-Cad, NiMh)  
Lithium 'Single Use' & 'Button Cell'



### UNACCEPTABLE MATERIALS:

- EXPLOSIVES
- BIOLOGICAL WASTE
- RADIOACTIVE MATERIAL
- UNLABELED OR UNKNOWN SUBSTANCES
- TRASH
- SCRAP METAL
- YARD WASTE
- AMMUNITION

**Proper disposal of household hazardous waste & electronics is a simple way we can protect our environment.**

### Household Hazardous Waste & Electronics Recycling Program

3224 Colvin St.  
Alexandria, VA 22314

### Hours of Operation (except Holidays)

Monday 7:30 a.m. to 3:30 p.m.  
Tuesday CLOSED  
Wednesday CLOSED  
Thursday CLOSED  
Friday CLOSED  
Saturday 7:30 a.m. to 3:30 p.m.  
Sunday CLOSED

**Eligible participants:**  
City of Alexandria Residents ONLY.  
Waste must have been generated from a residence.

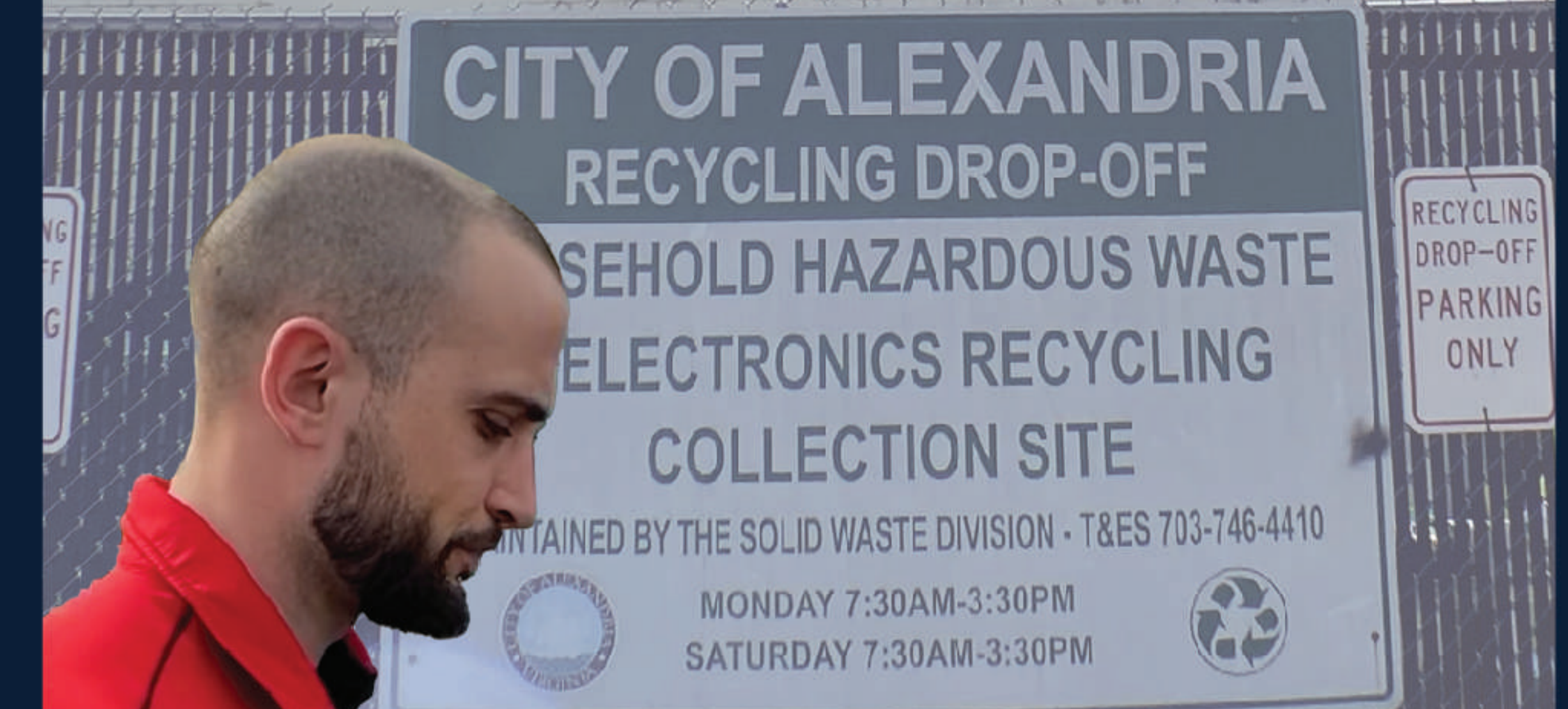
**Businesses:** Businesses are NOT eligible to participate at the Household Hazardous Waste & Electronics Center. For more information on hazardous waste disposal options for businesses visit [www.knowtoxics.com](http://www.knowtoxics.com).

[alexandriava.gov/ResourceRecovery](http://alexandriava.gov/ResourceRecovery)



@AlexandriaVATES JULY 2022

# HOUSEHOLD HAZARDOUS WASTE & ELECTRONICS PROGRAM

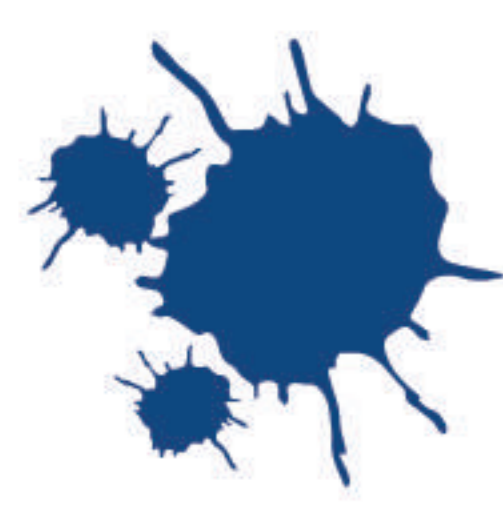


[alexandriava.gov/ResourceRecovery](http://alexandriava.gov/ResourceRecovery)

## HAZARDOUSE PRODUCT →

## LESS TOXIC OPTIONS →

## PROPER DISPOSAL



### STAINS/FINISHES

**Components:** Glycols, ethers, ketones, minerals, spirits, toluene, xylene, other volatile organic compounds.

WATER-BASED FINISHES

Store in screw-top container. Save for household hazardous waste collection.



### OIL-BASE PAINTS

**Components:** Alcohol, acetone, esters, ketones, petroleum, distillates, other volatile compounds.

WATER-BASED PAINTS

Share leftovers. Save for household waste collection.



### USED-OIL

**Components:** Hydrocarbon, heavy metals.

NONE; USE RECYCLED OIL

Recycle. Contact oil collection center or service station. Save for household waste collection.



### BLEACH CLEANERS

**Components:** Lye, hydrogen peroxide, sodium or calcium hypochlorite.

BAKINGS SODA

Use as intended in well-ventilated area. Never mix with ammonia.



### AMMONIA-BASED CLEANERS

**Components:** Ammonia, ethanol.

WHITE VINEGAR, LEMON JUICE

Use as intended in well-ventilated area. Never mix with chlorine bleach.



### DRAIN OPENER

**Components:** Lye, sodium hypochlorite.

PREVENT BLOCKAGE with biological clog preventers; remove clogs with plunger or Plumber's snake

Save for household waste collection.



### OVEN CLEANER

**Components:** Lye, Ammonia.

CATCH DRIPS with foil or cookie pan; for cleaning, baking soda, water and scouring pad

Use as intended in well-ventilated area. Save for household waste collection.



### PESTICIDES

**Components:** Call US EPA for a list of banned pesticides.

REMOVE FOOD SOURCE, use traps and baits or biological controls

Save for household waste collection.



### PAINTER THINNER

**Components:** Alcohol, acetone, esters, ketones, petroleum, distillates, other volatile organic compounds.

WATER IN WATER-BASED PAINTS

Store in screw top container. Allow paint solids to settle to bottom and pour off clear thinner to reuse. Save remainder for household waste collection.



### \*WATER-BASED LATEX PAINT

**Components:** Not considered hazardous.

Share leftovers. Add kitty litter or sawdust to leftovers to allow paint to dry. Trash it or bring to household waste collection.